

BLEASDALES

Limited

The Summer Sewing Sale
Incorporating Mauchline Ware

Including The Eleanor Johnson collection
and further items from the collections
of the late Diane Pelham Burn and Betty Wolf

Warwick, CV34 4BH, England
Wednesday 16 July 2014





7



9



15



19



28



29



30



31



68



71



81



82

The Summer Sewing Sale

Incorporating Mauchline Ware

including The Eleanor Johnson collection and further items from the collections of the late Diane Pelham Burn and Betty Wolf

Wednesday 16 July 2014 at 11am

The Great Hall, The Medieval Lord Leycester Hospital
Westgate, High Street, Warwick, England CV34 4BH

Sale Venue

The Lord Leycester Hospital
Warwick CV34 4BH
England

Contacts for use in emergency only please:
tel. 01926 491422
email lordleycester@btinternet.com

Viewing

Monday 14 July 10am to 4pm
Tuesday 15 July 10am to 4pm
Wednesday 16 July restricted viewing from 9am

Restricted viewing after commencement of sale.

Sale enquiries

Prior to view and sale
R.V. Bleasdale 07983 304880

View days

R.V. Bleasdale 07983 304880

Sale days

R.V. Bleasdale 07983 304880

email

rvb@bleasdalesltd.co.uk

Updated sale information and results

www.sewingsales.co.uk

Catalogue: £10 or £12 inc. postage

Collection

Purchases may be collected from the Lord Leycester up to 12 noon on Thursday 17 July 2014, thereafter please contact us on 07983 304880 to make collection/delivery arrangements.

We consider posting items to clients as part of our service and do so at cost.

Our packing is robust rather than pretty and we may use recycled material to protect your items.

Admission

Admission to our view is free, your catalogue also allows two people entrance to the historic medieval Hospital – Tuesday and Wednesday 10am–4pm.

Please note the hospital is closed on Mondays with the exception of our sale view.

Press and Marketing

Chantal Haddon
01728 860924 or
07501 116934
chantal.haddon@virgin.net

Conditions of Sale

Our Conditions of Sale, under which this sale is conducted, are available via our website www.sewingsales.co.uk or on request. Our conditions are based upon recommended Conditions of Sale approved by The Society of Fine Art Auctioneers and The Royal Institute of Chartered Surveyors. Your special attention is drawn to conditions relating to online bidding via the-saleroom.com

Front Cover Illustrations:

Lots 493, 564, 327, 396, 170, 87, 263, 162, 99, 461

Back Cover Illustration: Lot 668

the-saleroom.com

At the Auction

Registering, Paddle Number and the Buyers Premium

If you are coming to the sale we will ask you to register so that we can provide you with your own paddle or bidding number.

All we will need to register you, are you name, address and contact details, a proof of identity, such as a driving license or passport. You only need to register once with us and we will keep your details securely for future sales.

If you bid in the sale and are successful you will pay the hammer price plus a premium of 20% of the hammer price.

Please note that any lots purchased via the-saleroom.com live auction service will be subject to an additional 3% commission charge on the hammer price.

Once you have paid you are able to collect your lots. For delicate items we are happy to supply additional packing materials free of charge.

What happens if you can't attend the auction?

Our printed catalogues provide comprehensive information about all the lots included in the sale as well as illustrations and guide estimates. Once you have decided which lots you are interested in you can then contact us to get further information about the condition of an individual item or to place your bid.

View online

Every lot in our sale will be published online with full catalogue details and a colour image. You can view all our sales online at www.sewingsales.co.uk. or via the-saleroom.com

Absentee bids

If you can't come to the sale one way to bid is by completing an absentee bid form prior to the sale.

Once again you will need to register your details, name, address and contact number.

We may contact you to check your identity.

Tell us which lots you are interested in and the maximum bid you wish to leave. Please remember that there will be an additional buyers premium charge on top of your maximum bid, which is 20% of the hammer price.

You can return your signed form (see back of catalogue) by post or email. If you are successful we will let you know within 48 hours.

Once you have paid the hammer price plus buyers premium of 20%, you can collect your items from us or for an additional fee we can arrange to post or courier them to you.

Telephone bids and Client Services

Unlike many other auctioneers we are happy to accept telephone bids on any items, we will not impose minimum lot values. To make sure that the auction runs smoothly we do have flexible restrictions on the number of items clients can bid on by phone.

To ensure that we provide an efficient telephone bidding service we ask you to contact us 24 hours in advance of the sale if you want to bid by phone.

We will need you to provide us with both a landline and mobile phone line number.

We will contact you during the sale, a few minutes before the lot you wish to bid on goes under the hammer.

If you are the successful bidder you will know immediately.

Payment

At present we are only able to accept payment by cheque, cash or bank transfer. We are not able to accept payment in excess of £5000 in cash per sale in order to satisfy current legislation.

We do not accept payment by credit or debit cards.

Our Bankers

Lloyds, Leamington Spa
Sort code: 30-94-93
Account no: 00302603
IBAN: GB24 LOYD 3094 9300 3026 03
BIC: LOYDGB21137

Online Bidding

Bleasdales Ltd offer an online bidding service via the-saleroom.com for bidders who cannot attend the sale. In completing the bidder registration on www.the-saleroom.com and providing your credit card details and unless alternative arrangements are agreed with Bleasdales Ltd:

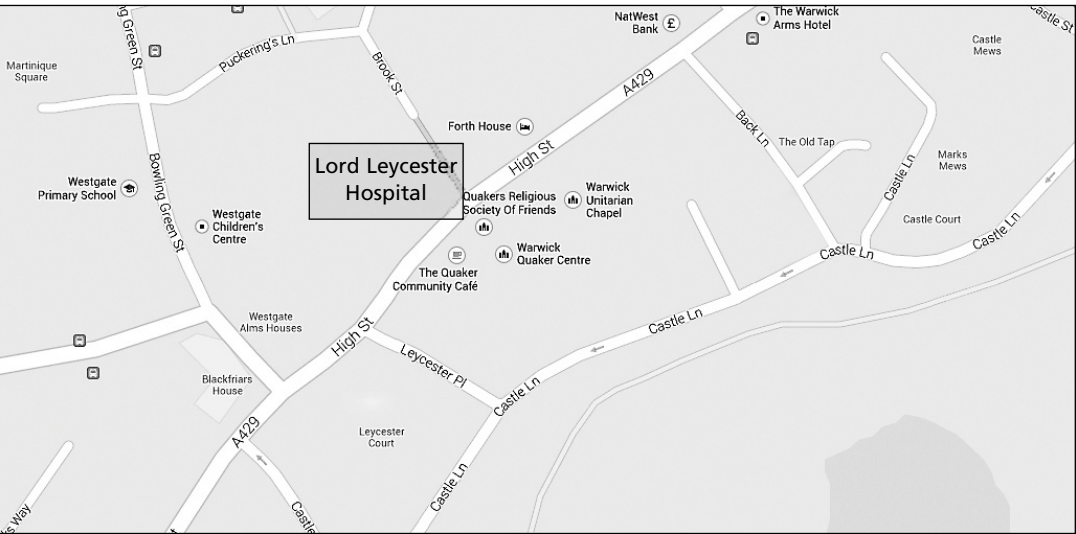
1. authorise Bleasdales Ltd, if they so wish, to charge the credit card given in part or full payment, including all fees, for items successfully purchased in the auction via the-saleroom.com, and
2. confirm that you are authorised to provide these credit card details to Bleasdales Ltd through www.the-saleroom.com and agree that Bleasdales Ltd are entitled to ship the goods to the card holder name and card holder address provided in fulfilment of the sale.

Cites Regulations

Please be aware that certain Lots in this sale may be subject to the CITES regulations if exporting these items outside the EU. These regulations may be found at www.ukcites.gov.uk or may be requested from:

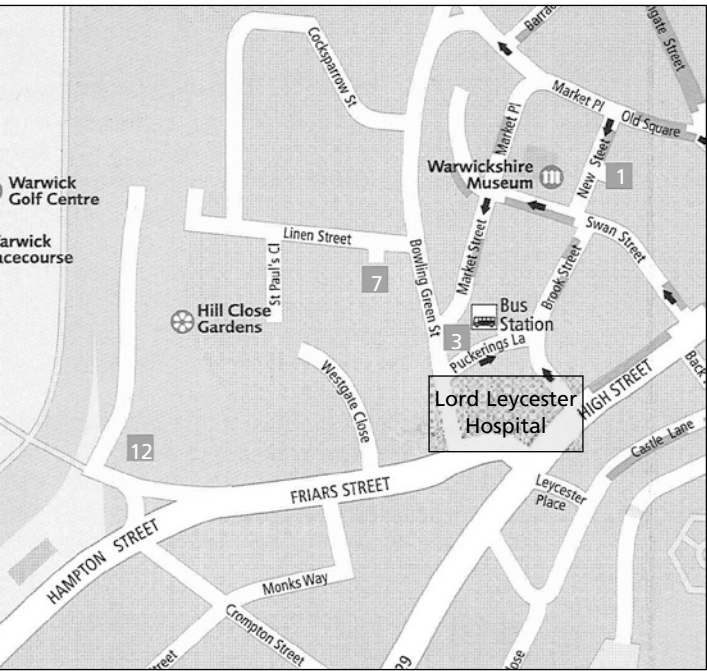
Department for Environment, Food and Rural Affairs (DEFRA)
Global Wildlife Division
1st Floor, Temple Quay House
2 The Square
Temple Quay
Bristol BS1 6EB

Sale Location – Warwick CV34 4BH



Car Parking

For viewing and Sale we recommend car parks 1 / 3 / 7 / 12 on the map below.
Relevant car parking charges are also shown below. P12 represents the best value.



P1	New Street	CV34 4RX	3 hrs (charging applies 24 hours)	£3*
P3	West Gate	CV34 4DE	3 hrs (charging applies 24 hours)	£3*
P7	Linen Street (locked between 8pm – 7am)	CV34 4DT	24 hrs (open between 8am – 8pm)	£6*
P12	The Racecourse St Marys	CV34 6JP	24 hrs (charging applies 24 hours)	£1*

* maximum charge

By Rail
Warwick Station – 10 minute walk
Warwick Parkway – 5 minutes by taxi
Chiltern Line from London Marylebone

By Air
Birmingham Airport

Accommodation/Tourist Information
Warwick Tourist Board +44 (0)1926 492212

The Eleanor Johnson Collection



Eleanor and Collecting

In the early 1970's, a neighbour of ours asked us to accompany her to an exhibition of the Orpington Sketch Club. On the table outside the hall, I picked up a leaflet about the South London Antiques' Centre which I later visited. There were two stands there which immediately attracted my interest - the exhibitor was on one and she showed me some needlework tools. When I said I could enjoy becoming a collector because I was interested in many types of needlework and crafts, she advised me to consult a book, 'The History of Needlework Tools and Accessories', by Sylvia Groves and my husband, Alan, bought me a copy. She also drew my attention to some bookmarks which I immediately fell for, and purchased one, the first of a collection made by us which Robert Bleasdale is now going to sell.

After this visit we started going to local charity Antique Fairs. My first buy was an ivory cotton barrel and a little later, a rosewood sewing box with no contents. Some time later we started to exhibit and sell at Fairs ourselves, at first specialising in Treen items made in wood - I looked for needlework tools made in wood, including lace bobbins. We were given a copy of the Shire book, 'Pillow Lace and Bobbins', which sold very well. Eventually we had an invitation to a lunch for book dealers because we sold more copies of that book than anyone else in the South West. When we were saying goodbye to John Protheroe, the proprietor of Shire Publications, his secretary was standing beside him - I had asked her why they did not do a book on Needlework Tools. She told John and he said, 'Yes, you do it.' Of course, I said, 'I could not do that.' 'Yes', he said, 'You could - anyway, do a synopsis.' I did not really know what he meant so I did not do anything about it until we received another invitation to a lunch. Then I prepared my idea of a synopsis and showed it to John's wife, together with a few needlework tools in case she was not aware of what they were - she said she would give the synopsis to John. A short time later I received a lovely letter from John, saying it would make a good book and advising me how to proceed when writing a book. The first edition was published in 1978. By 1975 my

husband had given up his job and we had moved to Dorset. We then went full-time into the antiques' trade, exhibiting at two and three day Fairs over quite a wide area. Alan found that thimbles were very popular items to sell, and he had become quite knowledgeable about them, so we decided to suggest to John Protheroe that they should do a book on thimbles. He declined, saying that thimbles were just too ordinary a shape - he had not of course then seen some of the wide variety that existed. We left it alone for a while, but then we approached him again, when he changed his mind, and 'Thimbles' was published in 1982 - the title being changed to include 'Thimble cases' in later editions. It was very popular with collectors, and in 1997, reached sales of 100,000. John arranged a celebratory lunch with a special cake and a bottle of champagne.

The information for the book came from my husband, assisted by two irreplaceable books by Edwin Holmes. He refused to have his name on the new book as author, so all I could do was to give him an acknowledgement in it.

In the following years we continued dealing, and I continued my collecting, most of my items being featured in photos for the later editions.

I have now reached the age of 92. For the last five years until he died, I had been caring for Alan who had Dementia and some Alzheimer's. As I was not able to enjoy my collecting as before, I decided the time had come to sell my collection. I was always very selective in my choice of items and it was also important that the price fitted my budget. Writing the first two books and one called 'Fashion Accessories' (which was much later re-issued as 'Ladies' Dress Accessories) and as a result meeting so many interested people, made such a difference to my life. I never dreamt originally that I would be able to do such a thing and when I read the books now, I am amazed that I ever did it. I shall always be grateful to John Protheroe for launching me as a Shire Publications author, and to all the people who have valued my books and most of all to Alan for all his support.

Eleanor Johnson
15.02.14

Mauchline Ware

1

Five pieces of Mauchline ware, comprising: A circular reel box, internal end reel label for Chadwicks (lid with untitled colour print cottage in autumnal river landscape), gilt zig-zag border, 11cm diameter, a wool ball (colour – International Exhibition, Glasgow, 1888), 9cm, a darning mushroom with needlecase handle (Sir Walter Scott's Tomb, Dryburgh Abbey) 11cm, a small dome top sewing box (Rothie.Norman), 9.7cm, and an unlabelled tape box (engraving Rothbury/photographic Drakestone within gold zig zag border), 6.5cm. (5)

£60-100

2

Three pieces of Mauchline ware comprising: A skittle form thimble and reel case (Summit of Snowden), 8cm, a slant top thimble case (Sea wall and Pier, Bridlington), 3.2cm high, and a rectangular box with pincushion lid (Callander Bridge and Ben Ledi/Callander and Ben Ledi), 8.9cm wide. (3)

£40-60

3

Mauchline Ware: The Universal Sewing Box, rectangular (Burns Monument/Alloway Kirk/Burns Cottage/Abbotsford/The Braes of Ballochmyle), interior colour printed lid label, catch deficient of male part, 23.5cm.

£30-50

4

Four pieces of Mauchline ware, comprising: a horseshoe shaped sewing companion (York Minster From South East), velvet lined interior with full complement of four bone tools, 8.2cm, a thimble egg (York Cathedral From The North West), with needlecase and brass thimble, 7cm, a crochet cylinder (Herne Church/Dolphin Hotel and Clock Tower ...), with bone handle and six hooks, 10cm, and a needlebook (Ryde/ferns), 7.4cm x 4.5cm. (4)

£50-100

5

Six pieces of Mauchline ware, comprising: a pail form pincushion/box (Taymouth Castle/Made of Wood From The Land of Burns), 6.2cm, a cylinder form thimble case with pincushion lid (Made of Wood which grew on the Banks of the Doon/Bought in the Cottage/photographic interior view of cottage with gilt wavy border), 4.5cm, a cylinder box (The Gateway and Tosyth Priory, Essex), thimble reel and needle cylinder, 7cm, a diamond form pincushion (Summit of Snowden), 6.7cm, a disc form pincushion (Shanklin Beach), 3.5cm, and a needlebook (City Cross, Winchester/The Trusty Servant), 5.5cm. (6)

£50-100

6

Three pieces of Mauchline ware, comprising: a wool ball on cord (The Sands, Ramsgate), 10cm diameter, a Medlock style ribbon cylinder (Osborne House, I.W./Carisbroke Castle/Ryde, Isle of Wight), 6.7cm, and a dome top reel box (Clacton-on-Sea, Essex), 8.2cm. (3)

£40-80

7

Five pieces of Mauchline ware, comprising: a wool ball on cord (Ventnor), 9cm diameter, a thimble case in the form of an egg and cup (Carisbroke Castle) with thimble, 7.5cm, a bell shaped tape measure (The Shrubbery, Southend), slightly reduced printed tape, 5.2cm, a slant top and curved front thimble box (Cliff Town, Southend), 4cm, and a saucepan and cover (Edinburgh Castle), as a thimble case, slight blemishes, 9cm. (5)

£50-100

8

Eight pieces of Mauchline ware, comprising: a small rectangular sewing box (Old Church, Bonchurch), 11cm, a thimble egg (Scarborough – scroll script), with thimble, needlecase and reel, 6cm, a trefoil pincushion (Kelso/Jedburgh Abbey – latter photographic with gilt wavy border), 5.5cm, a heart shaped pincushion (Skegness Pleasure Gardens), 6cm, a cylinder needlecase (Cavendish Hotel, Grand Parade, Eastbourne), 9.5cm, a needlepacket book (A Welsh Market Scene), lining worn, 8.7cm, a knitting needle cylinder with work slot (The Belvedere, Victoria Terrace, Weymouth), 24.5cm, and a knitting needle case (rectangular colour print “Welsh Costumes”), 20cm. (8)

£80-120

9

Eight pieces of Mauchline ware, comprising: an unusual knitting needle case (The Pier, Southend), in the form of a telescope, 19cm, a reel cradle (Sir Walter Scott's Monument, Edinburgh), 11cm, a needlebook (Ventnor From The Sea), 8.5cm, a cylinder bodkin case (Shanklin From The Cliff), 8.5cm, a cylinder needlecase (Cleft In High Rock, Tunbridge Wells), 8.5cm, a heart shaped pincushion (Rouen, Eglise de Bonsecours/Importe), 6cm, a knitting needle cylinder (Windermere/Grasmere Church), 18.5cm, and a pail form box pincushion (A Merry Christmas), 5cm. (8)

£80-120

10

Three pieces of Mauchline ware, comprising: a bell shaped tape measure (New Town and Shrubbery, Southend), tape commencing at 5 inches, 6cm high, a needlebook (Oban and Sound of Kerrara – photographic), 5.5cm, and a girdle form waxer (Walton Castle), 4.2cm. (3)

£40-60

11

A Mauchline ware slant top and curved front thimble box (Borrowdale, The Border Stone – photographic), with silver thimble, 4.2cm, and a Tunbridge ware needlebook, 5.5cm. (2)

£30-50

12

Mauchline ware: Two circular dome top reel boxes, comprising a basket weave pattern example with print of children to lid, three numerical side apertures, one lacking bone insert, internal label for Clark & Co., 8cm diameter, and another classical pattern (Burns' Cottage), internal label for Ashworth's Machine Cotton ..., single bone side aperture, worn, 8cm diameter, together with a globe form velvet pincushion, 12cm high. (3)

£30-50

13

Four Mauchline ware thimble cases, comprising: an egg form example (The Knave, Crystal Palace), with internal needlecase and reel, 7cm, another in cedar wood (The Graves of Wordsworth and Coleridge), 7cm, a rectangular box form example (Dartmouth – photographic), 4.4cm, and another slant top and curved front (Great Yarmouth from the Jetty), 3.6cm, all with thimbles. (4)

£50-100

14

Three Mauchline ware thimble cases, comprising: a tartan (Prince Albert) barrel form example, 4.2cm, a fern ware example with sloping top and curved front, 3.4cm, and an egg form example in chintz, 6cm. (3)

£40-80

15

Five pieces of Mauchline ware, comprising; a turret form tape measure (Burn's Cottage, Alloway/Bought in the Monument), replacement tape, 5.5cm, a saucepan thimble box (Barmouth from the Sea), 10cm, a skittle form thimble case (N.E. View, Brighton Pavilion), 8cm, a slant top curved front thimble box (St. George's Church, Doncaster), with silver thimble, 4cm, and a crochet cylinder lacking tools (St. Peter's Church, Bournemouth), 10.2cm. (5) (*Eleanor Johnson Collection*)

£50-100

16

Five pieces of Mauchline fern ware, comprising; a needlebook, 7.4cm x 4.5cm, two disc form pincushions, one with view (Scarborough), 3.5cm diameter, a girdle form pincushion, 4.5cm, and a part waxer, 2.7cm. (5) (*Eleanor Johnson Collection*)

£40-60

17

Six pieces of Mauchline ware, comprising; a pincushion in the form of a teapot (Great Malvern), probably continental, 4.5cm, a rare saucepan tape measure (Auld Brig O'Doon/Bought In The Cottage "Oft I have roved ..."), tape lacking, 8cm, a thimble egg (Barmouth from the Sea), a disc form pin wheel, (Abercairny/Made of Wood ...), 5.2cm, a heart shaped pincushion (Caesar's Tower, Kenilworth), 5.5cm, and a rectangular reel box (George Square, Glasgow), internal label for Anchor Thread, lacking dividers, 9.7cm. (6) (*Eleanor Johnson Collection*)

£50-100

18

Three pieces of Mauchline ware, comprising; a wool ball holder (Barmouth From The Sea), with cord, 9cm diameter, a circular reel box (Teignmouth From The East Cliff/ ... From The Torquay Rd/ The Den ...), six bone side apertures, internal divisions and thimble holder, 10cm diameter, and a circular box (Durham Cathedral), internal label "Brook's Sewing Cottons" and further base label, 10.5cm. (3) (*Eleanor Johnson Collection*)

£40-80

19

Six pieces of Mauchline fern and other wares, comprising; a fern ware six aperture rectangular reel box, 11cm x 7cm, a fern ware thimble egg, a fern ware disc form pincushion (A Happy Christmas), 4cm, a girdle form pincushion (A Merry Christmas), 4.5cm, a pin wheel (The Market Cross, Stalbridge, Dorset), 4.5cm, and a rectangular box (A Present From Weymouth – floral), 7cm. (6) (*Eleanor Johnson Collection*)

£40-60

20

Six pieces of Mauchline ware, comprising; an unusual cylinder tape measure (Hunstanton Pier), black painted top and base, complete printed tape, 4cm, a black ground cylinder pincushion with gilt wavy border, floral print, 3cm, a circular tape measure applied floral scraps "To My Little Valentine", tape a little frayed, 3.5cm, a needlebook in fern ware, a shield shaped pincushion, shells and seaweed, 5cm, and a cylinder needlecase (Tonbridge Grammar School), 9.5cm. (6)

£50-100

21

Five pieces of Mauchline ware, comprising; a heart shaped pincushion (Wallace Monument, Abbey Craig/Bought In The ... Lady of the Lake), 5.5cm, a slant top thimble box (Tower of Refuge, Isle of Man), with brass thimble, 4cm, a crochet cylinder (Town Hall, Grantham), bone handle with chuck and six hooks, 10.3cm, a thimble skittle (Llangollen and Castle Dinas Bran), 7.5cm, and a needlebook (Houses of Parliament/ Westminster Abbey), 7.2cm x 4.5cm. (5)

£50-100

22

Four pieces of Mauchline ware, comprising; a bellow form pincushion (Stirling Castle from Back Walk), revarnished, 9cm, a bee skep tape measure (Broadwater Church, Sussex), replacement tape, 4.2cm, a needlebook (Melrose Abbey – Made of .../Abbotsford), 5.5cm x 3.5cm, and a diamond form pincushion (Newhaven Fishwife), 7cm. (4)

£40-60

23

Three pieces of Mauchline ware, comprising; a circular reel box (Shakespeare's House, Stratford upon Avon), six bone apertures, one s.d., 7.8cm, a canted rectangular reel box (Dryburgh Abbey), six numerical bone apertures, lacking internal posts, lid label for Clark and Co, 10cm x 7cm, and a Medlock ribbon cylinder (Sir Walter Scott's Tomb, Dryburgh Abbey/Dryburgh Abbey/Made of Wood ...), 6cm diameter, 6.5cm high .

(3)

£40-80

24

Four pieces of Mauchline ware, comprising; a circular reel box (Burns' Cottage), gilt wavy border, three numerical bone apertures, lid label for Clark & Co., 7.5cm, a knitting needle case with work slit (The Bridge, Lowestoft), 24.5cm, a bodkin cylinder (Shakespeare's House, Stratford upon Avon), 9.2cm, and a rectangular sewing companion (Shanklin From The Cliff), internal thimble stand, needle booklet, 10.5cm x 5cm. (4)

£50-80

25

Six pieces of Mauchline ware, comprising; a fern ware dark ground trefoil form pincushion, one side with photograph in wavy gilt line, church, untitled, 5.2cm, a disc form fern ware dark ground pincushion, applied scroll "A Happy Christmas", 3.2cm, a fern ware dark ground needlebook with bone crochet hook retainer, 8.5cm x 6cm, a black ground rectangular box lid with fishing boats and verse, internal lid label for Clark & Co., 8cm x 5.5cm, a black ground rectangular box, oval floral panel to lid, internal lid label "Use Clark and Co's ...", 7cm x 5cm, and a whitewood rectangular box, autumn landscape, internal lid label "James Chadwick and Bros. Ltd.", 9.5cm x 8cm. (6)

£50-100

26

Four pieces of Mauchline ware, comprising; a cylinder needlecase (Colwyn Bay), 10cm, a needlebook (St. Ann's Well, Malvern), 7.5cm x 5.5cm, a barrel form five aperture needlecase (Burns' Monument – Bought in the Monument – verse), slight loss to image, 6cm, and a cylinder thimble box with pincushion top (Iron Bridge and Lower – continental), 5cm. (4)

£40-60

27

No lot

28

A Mauchline ware cotton ball in the Chintz pattern, applied 'Copyright' label, bone aperture, two internal labels for Clark & Co. Anchor Sewing Cottons, 7.8cm diameter.

£50-100

29

A Mauchline ware dome top cylinder reel box, in the Toys and Games pattern, three bone apertures, internal label for Clark & Co., 30% of label lacking, 8.2cm diameter.

£30-50

30

A Mauchline tartan ware dome top cylinder reel box (M'Intosh/lid with oval twin portrait of The Prince and Princess of Wales), fancy wavy gilt border, six bone apertures, with numerical labels, internal label for Clark & Co., Paisley ..., internal thimble holder, 10cm diameter.
£40-80

31

A Mauchline tartan ware single reel box (M'Duff/lid with unusual J. Clark & Co., Paisley, trade mark in the form of a pound sign), single bone aperture, 7.2cm.
£40-60

32

Two Mauchline ware reel boxes, both of cylinder form, comprising; a Chintz type example, oval "Wish" panel to domed lid, internal label for Clark & Co. Anchor Sewing Cottons, three bone side apertures, 8cm diameter, the other ivory leaves and flowers on a gold ground, pincushion lid, internal label for James Chadwick, slight chip to base rim, 7.5cm diameter. (2)
£30-50

33

Two Mauchline ware reel boxes, comprising; a circular dome top example in the willow pattern, internal label for Clark & Co. Anchor Sewing Cottons, single side aperture lacking bone inset, 8.2cm, and a rectangular example in the classical pattern (Dryburgh Abbey), three internal divisions with Clark & Co. Anchor Sewing Cottons, ... 10cm. (2)
£30-60

34

Four Mauchline ware reel boxes, comprising; a black ground Chintz pattern barrel form example "With Kind Regards", three bone side apertures, internal label for "The M.E.Q. Six Cord", 7.5cm diameter, a single reel black ground barrel form example "Use Clark & Co's Anchor Cottons", 4cm diameter, a Chequer pattern example, rectangular, internal label "use Clark & Co's Anchor Cottons ...", 11cm, and a green ground hexagonal example, pansy print to the lid, six bone side apertures with numerical inscriptions, internal label for "Clark & Co. ...", 11.5cm wide. (4)
£50-100

35

Four Mauchline ware reel boxes, comprising; a rectangular fern ware example, dark ground, internal label for Kerr & Co., 10.5cm, another hexagonal, one only of three ebony side apertures, internal label for "50 Kerr's Ne Plus Ultra ...", 9cm, a black ground rectangular example, boy and girl colour print to lid, internal label for James Chadwick and Bros. , 9cm, and a rectangular example, pink sides, castle and cattle print to lid, internal label for "James Chadwick and Bros ...", internal divisions, 12.5cm. (4)
£50-100

36

Two Mauchline ware reel boxes, comprising; a black ground rectangular example, rectangular bird print to lid with wavy gold line, internal label for "James Chadwick and Bros.", 19cm, and a whitewood rectangular example with pansy panel lid over concave sides, script title to front "J. & P. Coats, Sewing Cotton, Paisley", six bone mounted numerical side apertures, internal label for "J. & P. Coats ...", 12.2cm. (2)
£40-80

37

No lot

38

A Mauchline ware rectangular wooden hinge snuff box (He That's Nae Prien In A Pinch Is Nae Worth A Snuff), one end with discoloured varnish and small chip, 8cm.
£40-60

39

Three pieces of Mauchline ware, comprising: A mantel clock money box, printed circular dial (Photographic – At Saltcoats), 10.5cm, a barrel form money box (George Square, Glasgow), 7.5cm, and a baker's table money box (Edinburgh From Calton Hill), 12cm. (3)
£40-80

40

Two pieces of Mauchline ware, comprising: A rectangular box, colour print to lid with berried holly and flowers (A Present From Peebles), 16.5cm, and a two tier casket with hinged lid and drawer to base (Burns Cottage, Bought in the Cottage ... The goddip Kee Kitt), 15.5cm. (2)
£30-50

41

Four pieces of foreign Mauchline-type ware, comprising: A vesta vase on cylinder base, incorporating striker (Scarborough – Made in Germany), a shallow bowl (Crystal Palace, Sydenham/Westminster Abbey), 7.3cm, a barrel form money box (Crystal Palace, Sydenham – Manufactured Abroad) and an eraser holder (Llandudno – Manufactured in Germany), 5cm. (4)
£20-30

42

An unusual Mauchline ware money box, modelled as Burns' Cottage (Burns' Cottage, Alloway/Bought In The cottage/The Gossip Keekit .../ green tinted door details and window frames).
£40-80

43

Four pieces of Mauchline ware, all books, comprising: Burns Poems and Songs, Milner and Company, slight loss to top of spine (Interior of Burns Cottage/Made of Wood Which Grew on the Banks of the Doon – Bought in The Cottage/Burns' Cottage), 12.5cm x 8cm, Marmion, David Boyle & Sons, front board detached (Abbotsford), 9cm x 6cm , The Language of Flowers, George Routledge & Sons Ltd., cloth spine, chips to corners of front board (photographic – Troon) and a book of songs (photographic – Birchington Church), 11cm x 8cm. (4)
£40-60

44

Mauchline Ware: A fine burr yew wood and inlaid six division cheroot case, of canted rectangular section, the cants inlaid with contrasting veneers curving inwards to the ends, gold motif to top and base, foil lined interior, 12.7cm x 5cm x 4.2cm.
£200-300

45

Mauchline Ware: A fine early cylinder rouge pot, the domed lid with gilt leaf scrolls, the base interior dished and applied with pink paint, 2.6cm, 3cm diameter.
£40-60

46

A Mauchline ware chalk cylinder (Balloch Myie Creamery Mauchline/ Seafoam For Best Cakes), 5cm.
£20-40

47

Five pieces of Mauchline ware comprising: A spectacle case (Lazey Wheel), 14.5cm, a small circular box (St. Mary Magdalene, Newark), 4.3cm diameter, a book form vesta (The Beach, Hastings), 4.7cm, a squat cylinder box (Weymouth From The Nothe), 6cm, and a go-to-bed (New Pier, Rhyl), 4.5cm. (5)

£40-60

48

Ten pieces of Mauchline ware comprising: A wall mounting egg timer (Walmer Castle), 19.6cm, a barrel (Dundee), 7cm, a rectangular box (Hadley Church), 9.3cm, a cylinder box (Hastings Pier), 8cm, a tumbler case with fern etched tumbler (Dover From The Sea), 7cm, a curved paper knife (Holy St. Mill, Chagford), 26cm, and four napkin rings (Queens Hotel, Hastings/Entrance to Pier, Southsea, Hants/Ventnor/Ilfracombe Hotel). (10)

£60-100

49

Four pieces of Mauchline ware comprising: A rectangular box (Entrance to Dovedale), 13.5cm, another (Dunstaffnage Castle), 8.5cm, another (East Terrace, Windsor Castle), 8.5cm, and another (Edinburgh Castle From Princes Street), 9.5cm. (4)

£30-50

50

Three pieces of Mauchline ware comprising: A rectangular glove box (lid photographic/Stonebyres Falls – front engravings Stonebyres Falls/Scotts Old Mortality), corded blue jasper lining, 25cm, a box, the lid decorated with crest titled “Prince Llewellyn”, 12cm, and a rectangular box, the lid with map of “Darbyshire”, 14.2cm. (3)

£40-60

51

Four pieces of Mauchline ware comprising: A rectangular glove box (Main Street, Campbeltown), 25cm, with a pair of leather gloves, a rectangular box (Shanklin Chine), 11cm, a canted corner rectangular box (Nelsons Monument, Calton Hill, Edinburgh, Height 450 Feet – Made of Wood Grown on the Lands of Abbotsford with additional images of Edinburgh Castle/Holyrood Palace), 11.5cm, and a dome top box (Hoylake Church), 9.7cm. (4)

£40-60

52

Two pieces of Mauchline ware comprising: A rectangular box (Mrs. Bowes Museum, Barnard Castle), pattern ware border, 17cm, and another (Folkestone 3 views), pattern ware border, 11cm. (2)

£30-50

53

Two pieces of Mauchline ware comprising: A rectangular glove box (Freshwater Bay, Isle of Wight), 25cm, with a pair of leather gloves, and another rectangular box (Abbotsford, Made of Wood White Grew Near Alloway Kirk ...), 18.5cm. (2)

£30-50

54

Three pieces of Mauchline ware comprising: A rectangular money box (Cupid playing a pipe to a bird on a flowering branch/Happy May Thy Birthday Be), 11.6cm, a rectangular box (transfer of elegant figures playing cards in a late 18th century interior), internal pencil date 1910, 11.5cm, and a turret form money box (floral print/Thrift To Catch dame ...), 9.5cm. (3)

£40-60

55

Two Mauchline ware books, both photographic images: The Scottish Keepsake Or The Songs of the Ayreshire Bard (front board portrait/Made of Wood Grown On The Banks of the Doon Bought In The Monument/reverse engraving Interior of Burns Cottage), leather spine, 12cm x 7.5cm, and The Story of Rob Roy (Doune Castle/Made From Wood of Old Roofing of Doune Castle), 9cm x 6cm. (2)

£40-80

56

Six pieces of Mauchline ware, all tartan ware: A tumbler case with glass tumbler, 8cm, an egg cup (MacLean), a circular box and cover, faded, 6cm diameter, and three napkin rings (Prince Charlie/MacDuff/Prince Charlie). (6)

£40-80

57

Two Mauchline ware snuff boxes, comprising; a small example, the lid painted with a sailing ship, foil lined interior with stamp to base “Ado ...”, wooden hinge, 3.7cm x 3cm, and another, the lid with engraving titled “There’s Many A Slip Between ...”, wooden hinge, foil lined interior with indistinct stamp to base, 8cm x 4.5cm. (2)

£60-100

58

Four pieces of Mauchline ware, comprising; a book, Peal Edition, The Poetical Works of Robert Burns (Interior of Burns’ Cottage – Memorial of the Land of Burns – Bought In ...), 9cm x 6.5cm, a rectangular watch case (Old Church, Benchurch), a tapering tumbler case (Caesar’s Tower, Kenilworth), 7cm, and a napkin ring (Broadstairs), 5cm. (4)

£40-60

59

Seven pieces of Mauchline ware, comprising; a circular box (Abbey Church, Bath), dents, 4cm diameter, a circular box with domed overhanging lid (Coedpella Hotel, Colwyn Bay), 5cm diameter, a bookmark (Cromer Church), 9.5cm, a whistle (Entrance to North Pier, Blackpool), 9cm, a comb case (The Beach, Eastbourne), 10.2cm, a napkin ring (Marine Parade, Yarmouth), and another (Mont St. Michel/Importe), dents, 6.6cm. (7)

£50-100

60

Two pieces of Mauchline ware, comprising; a book rack with hinged ends (Summit of Snowdon/Llanberis Castle – photographic), 28cm, and a rectangular box with dark monochrome print in red line border (Welsh Costumes), 13cm. (2)

£30-50

61

Six pieces of Mauchline ware, comprising; an obelisk thermometer (Castle Gateway, Lewes/Lewes Castle/Ruins of The Priory), thermometer loose and scale s.d. to top, 17cm, a watch stand on octagonal base (Bournemouth/Rd. No. 19731), 13cm high, a napkin ring (Canterbury Cathedral), a large tapering tumbler case (Memorial Church, Belfast – photographic), etched glass, 10.5cm, an egg cup (The Jetty, Margate – photographic), 7cm, and a box form watch case (The Parade, Skegness), 8cm. (6)

£50-100

62

Mauchline Ware – Three books: The Lady of the Lake, 1871, photographs (Mary Queen of Scots, black gilt borders – Grown In Queen Mary’s Garden – Bought In ... – verse), 18cm x 13cm; The Daily Motto Book, 1889 (Carlisle Cathedral From East), 11cm x 8cm; and The Golden Text Book (Dunkeld/Dunkeld House), 9.5cm x 7.5cm. (3)

£50-100

63

Four pieces of Mauchline ware, comprising; a rectangular hinged lid box with divisions and watchstand (Newbiggin Church), 14cm, another rectangular box (Freshwater Bay, I.W./Arched Rock .../The Needle Rocks), corded green silk interior, 14cm, another box (Nantwich Church), 10.5cm, and a wavy edge rectangular card tray (Alnmouth), 11.5cm. (4)
£40-60

64

Four pieces of Mauchline ware, comprising; a rectangular hinged lid box (Ilfracombe from The Torrs, gilt border and four spandrel views), internal ink date (18)93, 17cm, a tulip form spill vase with cut top (Balmoral/Ballater), 23cm, a cylinder spill vase (Twisell Bridge and Castle – Made of Wood Grown on Flodden Field), 12cm, and a letter knife (Dover Castle), 25cm. (4)
£50-100

65

Nine pieces of Mauchline ware, comprising; an inkwell stand with glass inkwell below an arch (Seaford Beach E.), 13cm high, a curved blotter (View Panoramic .../title distorted), 10.4cm, a barrel form box (The Beach, Eastbourne), 6cm, a napkin ring (Broadstairs From The Beach), a rectangular box (View From West Pier, Brighton), 8.5cm, an egg cup (Sandown Bay), 7cm, a paperknife (The Beach, Worthing), 26.5cm, a matchbox holder (Windsor Castle and St. George's Chapel), 6.5cm, and a barrel form money box (Beachy Head Lighthouse), slight loss of image to sky, 8cm. (9)
£60-100

66

Five pieces of Mauchline ware, comprising; a cribbage board (Broadstairs, Westcliff – photographic), 25cm, a book Birthday Wishes From Burns, inscription dated 1900 (The Avenue, South Hayling), 11.5cm x 9.5cm, a swivel cased mirror (Kirn From The Pier), 7cm, a watch stand (Heacham Hall), 9cm, and a rectangular hinged lid box (Oban from The South West/Pass of Brander, Loch Awe/Dunolly Castle), paper lined and corded interior, 13cm. (5)
£40-80

67

Eight pieces of Mauchline ware, comprising; a good cheroot case (Dundon From The Church Tower/Dundon), 14cm x 7.5cm, a cylinder form box (Inveraray Castle), 10cm, a tapering tumbler case (Inveraray Castle, West Front), with glass, 7.5cm, a circular shallow box (Bridge of Allan – The Queen of Scottish Watering Places – verse, Goldsmith/ Made of Wood ... National Wallace Monument), 7cm diameter, a napkin ring (Burns' Monument and Brig O'Doon, Ayr), a cylinder box with glass scent bottle (Windsor Castle, South Front), 6.5cm, a cylinder vesta box with raised cover (Ilfracombe from Hillsborough), match base striker, 9.5cm, and a rectangular pen wiper (The Beach, Eastbourne), 5.5cm. (8)
£100-150

68

A Mauchline ware tea caddy of rectangular form (Oban/Dunolly Castle, Oban/Dunstaffriage Castle), foil lined interior, 16cm x 10.5cm x 9cm.
£40-80

69

Eight pieces of Mauchline ware, comprising; a barrel form money box (Interior of Burns' Cottage – Made of Wood – Bought in the Cottage), 8cm, an egg cup (Waltham Abbey), 8cm, a rectangular box (Newport, Monmouthshire), 7.8cm, a tumbler (Burns' Cottage – Bought in the Monument – verse), 6.2cm a curved blotter (High Street Looking East, Marlborough/High Street and St. Peter's Church), 14cm, a paperknife (Esplanade, Bognor – photographic), 24.5cm, a napkin ring (Bournemouth on the Pier), and a cylinder box (Southport, Lancashire From The Pier), 6.5cm. (8)
£60-100

70

Six pieces of Mauchline ware, comprising; a shallow circular box (The Beach, Hastings), 6.6cm, a cylinder rouge pot (Melrose Abbey – Made of Wood ... Abbotsford), 3.4cm, a rectangular pen wiper (Carnarvon Castle From Across The Ferry), 5.5cm, a circular box fitted with a compass (High-Gate, Hawkshurst), 4.6cm diameter, an oval section go-to-bed/vesta (Pier, Worthing), 6cm, and a wall pocket (The Arcade, Bournemouth), 9.5cm. (6)
£50-100

71

Four pieces of Mauchline ware, comprising; a quaiche (from the Pass of Killiecrankie – no image – verse – Dunkeld, Mclean & Sons), 9.5cm, a small cylinder go-to-bed (The Parade, Hastings), 4cm, an oval section go-to-bed (Canterbury Cathedral), 6cm, and a ring box (Osborne House), 3.7cm. (4)
£50-80

72

Four pieces of Mauchline ware, comprising; a photograph album (Melrose Abbey/Abbotsford), internal pages a.f., 12.2cm x 10cm, a swivel form notelet (Cove/Rosenheath), 7.2cm, a cylinder box with glass scent bottle (Pulpit Rocks, Landslip, Lyme), and a book form vesta (Esplanade, Seaford, Looking West), crack to non-picture side, 5cm. (4)
£40-60

73

Five pieces of Mauchline ware, comprising; a photograph album (Cathedral Glasgow/New University), 12.5cm, a large rectangular hinged lid box (Bournemouth Pier/Westover Walks/Bournemouth From The Pier/ St. Peter's Church), light scratches, 17.2cm, a tumbler case with fern etched glass (Hastings Pier), 10cm, a notebook (Bridge at Bettws-y-Coed/The Miners Bridge), 8.3cm, and a rectangular money box (Princess Elizabeth's Tomb, St. Thomas' Church, Newport, Isle of Wight), 7.7cm. (5)
£40-80

74

Two pieces of Mauchline ware, comprising; a rectangular glove box, hinged moulded lid over concave sides (Craidie Burn Wood, gilt wavy border/Mineral Wells, Moffat/Moffat), the first photographic, silk interior frayed, 29cm, and a book ledge, hinged ends (Old Linslade Church/ Mentmore – photographic), 28cm. (2)
£40-60

75

Five pieces of Mauchline ware, comprising; a wall mounting letter rack (Wellington Crescent, Ramsgate/The Colonnade, Ramsgate, Looking East/Marina, Ramsgate), 21cm, a circular scallop border dish (The Bridge, Aberfeldy/Balmoral Castle/Taymouth Castle/Abbotsford), 19cm diameter, a circular box containing a concertina cup (High Tor, Matlock), 6.6cm, a rectangular box (The Terrace, Littlehampton/Littlehampton from E./ Littlehampton Church), one end of lid re-stuck, 14cm, and another (Severn Bridge near Chepstow), 8.4cm. (5)
£50-80

76

Five pieces of Mauchline ware, comprising; a cylinder dome top box (Hastings Castle/Pier/Lovers' Seat), 10.5cm, a circular base inkstand with pen dish (Pleasure Grounds, Saltburn By The Sea), spiral moulded inkwell, 11.5cm diameter, a sloping watch stand (Hurstmonceaux Castle/ Grand Parade, Eastbourne, 7.3cm, a dome top box (Central Promenade And Winter Gardens, Morecambe), 10cm, and a rectangular hinged lid box (Convalescent Home, Eastbourne), 13.5cm. (5)
£50-80

77

Four pieces of Mauchline ware, games, comprising; Halma with counters, 15.5cm, Reversi-For The Chess Board, Jaques & Son with counters, 13.2cm, a lift-off lid card box (St. Mary's Church, Wootton Under Edge/coloured cards to lid), 11cm, and a continental sliding lid domino box (New Bridge, Westminster/five other views/Made in Germany), 18.2cm. (4)
£30-50

78

Seven pieces of Mauchline ware, comprising; a large saucepan and cover (Entrance to Pier, Worthing), 12.5cm, a dome top cylinder box (Kelso Bridge and Abbey/Roxburgh Castle), 9cm diameter, a napkin ring (42nd Highlanders – Black Watch – Memorial, Aberfeldy), a two tone tumbler (Colwyn Bay From Flagstaff – photographic), 6.2cm, a paperknife (Malmesbury Abbey), 28.5cm, New Testament (Burns' Monument and Brig O'Doon, Ayre/Burns' Cottage), 10.7cm, and a tulip form spill vase with cut top (Canterbury Cathedral), 16cm. (7)
£50-100

79

Nine pieces of Mauchline ware, comprising; a hinged lid rectangular box (lid with full photograph with gilt border, untitled/ Beld Craig, Moffat/Lower Fall, Grey Mare's Tail, Moffat), velvet interior, 10.7cm, another (lid in colour with landscape and St. Mary's Church, Scarborough), 11.7cm, a napkin ring (The Barbican, Alnwick Castle), a stamp box (Hythe – School of Musketry – photographic), 6.2cm, a spectacle case (Ilkley Parish Church – photographic) with spectacles, 13cm, a paperknife (The Belfry, Elston Church – photographic – Warranted Made of the Oak from Elston Church previous to restoration 1880), 27.5cm, another in olive wood timber (Souvenir of The Holy Land – Jerusalem from Mount of Olives), 26cm, a cylinder box with scent bottle (Salisbury Cathedral N.E. – photographic), 7.4cm, and a large barrel form vesta (Dunfermline Abbey – photographic), bone mount, base striker, 8cm. (9)
£80-120

80

Five pieces of Mauchline fern ware, comprising; a hinged top card case, 11cm x 7.2cm, a pair of glove stretchers, 20.5cm, a shallow circular box, 6.2cm, another, 7cm, and a paperknife (Lily of the Valley), 23.5cm. (5)
£50-100

81

Seven pieces of Mauchline ware, mixed finishes, comprising; a rectangular hinged lid box (Ilfracome Hotel – seaweed colour print), 13.5cm, a rectangular pen wiper (Pier Road, Clacton on Sea – over a colour rose print), 5.5cm, a needlebook (one side tartan/A Happy Christmas ... with rose, small gilt 'Patent' label), s.d., 8.5cm, a dome top cylinder box (Cranville Hotel, Ramsgate), 8cm diameter, a hinge lid rectangular box (Pier, Hastings, over floral colour print), 9.5cm, a rectangular box (Railway Bridge, Runcorn, with colour print, flowers and butterfly), 9.2cm, and another (Hove Church, over colour print of flowers), 7.8cm. (7)
£50-100

82

A black ground floral Mauchline ware six image photographic concertina, Gem Box of Real Photographs – Souvenirs of This Locality in white and black wood ..., in rectangular case (Souvenir of Carrickfergus flanked by colourful flowers), 8.3cm x 6.5cm.
£30-50

83

Three pieces of Mauchline ware and papier-mâché, comprising; an English papier-mâché book slide, hinged ends with open handles, well painted with ferns, 33cm closed, a tartan ware (Drummond) cut top tulip form spill vase, minor losses and dents, 23cm, and a wall mounting three fold letter rack in conventional coloured fern ware on a brown ground, 21cm. (3)
£50-100

84

Five pieces of Mauchline fern ware, comprising; a hinged lid rectangular box (Lid with paper scroll – A Merry Xmas ...), blue silk corded interior, 15cm, a cylinder box, 8cm high, a card case, hinge a.f., 11.2cm, a cylinder go-to-bed, 4.6cm, and a bookmark/page cutter (A Happy Christmas), 12.5cm. (5)
£40-80

85

Three pieces of Mauchline ware and another item, comprising; an unusual goblet (The Needles Rock and Lighthouse), chip to rim repaired, 12cm high, a pin hinge rectangular box (Shanklin, Isle of Wight), 8.1cm, a barrel form money box (Life Boat House, Clacton-on-Sea), 8cm, and a papier-mâché circular dish with a titled photographic view "Crystal Palace", within gilt border, 17cm diameter. (4)
£40-80

86

A Mauchline ware snuff box of rectangular form, the lid with engraving of a horse and trap with standing lady and seated gentleman, the horse held by a groom, seaweed style penwork sides and base, wooden hinge, 9cm x 5cm.
£60-100

87

A Mauchline ware snuff box of rectangular form, the lid with a penwork panel, titled "Dalkeith Palace", wooden hinge, convex sides, 9cm x 4.5cm.
£150-250

88

Three pieces of Mauchline ware, comprising; a rectangular box (Coupland Castle/Lilburn Tower/Made of Wood Grown in Chillingham Park ...), lid with large oval photographic view in wavy gilt line), green silk and corded interior, 14cm, the game of Halma with pieces, 15.5cm, and a thimble egg with three robins on a holly branch, internal reel and needle cylinder, 6.5cm. (3)
£50-100

89

A Mauchline ware snuff box by Smith's Mauchline, of curved end rectangular form, the lid inscribed "Made From The Oak of Mary of Guise's Chapel, Castle Hill, Edinburgh, Erected 1474, Taken Down in 1845 to make way for the Free Church College", wooden hinge, interior stamp " ... To Her Majesty", inscribed name to bottom "G. Garine", 9.7cm x 4cm.
£150-250

90

Eight pieces of Mauchline and other ware, comprising; three black ground floral napkin rings, a pair of glove stretchers (Corbier Lighthouse, Jersey), 18cm, a cylinder form box (Interior of Burns' Cottage/Bought in .../verse), 14cm, a cylinder box in alternate light and dark (Laxey Wheel), 8.5cm, a rectangular box, the sides and top with flowers and greeting, 7.5cm x 5cm, and a snuff box in papier-mâché, the lid with a river scene and church (continental), 8.4cm x 5.5cm. (8)
£40-80

91

No lot

92

Twelve pieces of Mauchline tartan ware, comprising; a Clark & Co. dome top cylinder reel box, six apertures (M'Beth), damage to edge rim, 10cm, a dome top cylinder box (Hay and Leith), wear to edge rim, 7.5cm, a rectangular playing card box (M'Lean/fern photograph to lid), general wear to joint, 13.2cm, a small cylinder box with thimble, worn, 3.1cm, a cylinder needle box (Stuart), 6cm, another larger, untitled, 8.7cm, a paperknife, untitled, 17.5cm, a rectangular Clark & Co. cotton box (M'Pherson), hinges a.f., 9.6cm, a shallow circular dish (MacLean), 10cm, a napkin ring (Caledonia), another (M'Pherson), and a base section only piece. (12)

£50-100

93

Four pieces of Mauchline tartan and fern ware, comprising; a tartan ware book, Poems by Sir Walter Scott (front board with photographic oval, Sound of Mull, From Oban), spine worn, front board loose, 13cm x 10.5cm, The Book of Common Prayer (fern boards with overlaid cross to cover), 9.7cm x 6.4cm, New Testament (fern boards), 10.3cm x 7.5cm, and an address book (fern boards), 11cm x 7cm. (4)

£30-50

94

Two Mauchline tartan ware books, comprising; Burns' Poetical Works, 1902 (M'Intosh with photographic oval of Burns), chips to corners, 9cm x 6.5cm, and Bridal of Triermain, Sir Walter Scott, Vol. VI (Gordon/Statue of Scott), 14cm x 9.5cm. (2)

£40-80

95

Six pieces of Mauchline ware, tartan and other finishes, comprising; a rectangular box (M'Lean/colour print of Burns to lid), corners worn, 8.7cm, an unusual needle box titled "Needles", wooden hinge, the lid painted with Burns' Cottage and a landscape, worn, 5cm, a green tartan rectangular snuff box, wooden hinge, generally worn, 8.2cm, a white wood oval section box, painted with a kingfisher over water and amid flowers, signed "G. M. Yardley", 7cm, a napkin ring (Forget Me Not), and another, flowers and insects. (6)

£50-100

96

No lot

97

Two pieces of tartan ware, comprising; a cylinder form tape measure (Prince Charlie), printed silk tape commencing at 2 1/2 inches, 3.4cm high, and a pin cylinder, (M'Farlane), some minor wear, 5cm. (2)

£40-60

98

A tartan ware thimble case, curved front, sloping lid (Caledonia), green velvet lined interior, 3.5cm.

£40-60

99

A tartan ware (M'Lean) multiple silk winder, 6.7cm. (*Eleanor Johnson Collection*)

£30-50

100

Four pieces of tartan ware, comprising; a slant top needle packet box (Prince Albert), 5.4cm, a diamond form pincushion (Caledonian), 6.2cm, a shuttle (worn), and a part needlecase. (4) (*Eleanor Johnson Collection*)

£40-80

101

A good tartan ware (M'Lean) thimble case of skep form with wavy gilt lines, bone top finial, with thimble, 4.6cm high. (*Eleanor Johnson Collection*)

£50-80

102

Three pieces of tartan ware, comprising; a good thimble barrel (Caledonia), diamond gilt lines, with thimble, 4.5cm high, a button end waxer (M'Duff), 2.8cm, and a circular box (Caledonia), with pincushion top, 5cm diameter. (3) (*Eleanor Johnson Collection*)

£60-100

103

Two pieces of tartan ware, comprising; a dome top cylinder reel box, three numerical bone apertures, internal label for Clark & Co., 8cm diameter, and a dome top reel box (Stuart), cord handles, 8.4cm. (2) (*Eleanor Johnson Collection*)

£40-60

104

Five pieces of Mauchline ware, comprising; a wool ball holder on cord (The Colonnade, Ramsgate, looking East), 8.4cm diameter, a dome top circular reel box (Pier and Royal Hotel, Lowestoft), three bone side apertures, 7.5cm, an egg timer, lacking glass (The Pier, Clacton-on-Sea), a spectacle case (Sandown), 14cm, and a rectangular box (St. Margaret's Church, Lowestoft), 8.4cm. (5) (*Eleanor Johnson Collection*)

£40-80

105

Three pieces of tartan ware, comprising; a two division case (Caledonia), probably for a pair of folding knives, 6.5cm, a disc form circular pincushion (Chisholm), and a pin cylinder, untitled, 5.1cm. (3)

£50-100

106

Three pieces of tartan ware, comprising; a thimble egg, untitled, wavy gilt lines, internal reel and needlecase, 5.5cm, another of skep form, untitled, 4cm, and a cylinder needlecase (M'Farlane), worn and chipped, 9.5cm. (3)

£40-80

107

A tartan ware (Stuart) thimble egg, with internal needlecase, 5.5cm.

£30-50

108

Four pieces of tartan ware, comprising; a circular disc form pincushion (Prince Charlie), 5cm, a pin wheel (Prince Charlie), wear to varnish, 5cm diameter, a girdle form double ended pincushion (Prince Charlie), 4cm, and a tartan ware box, rectangular, the lid with floral transfer and 'Birthday Wish' verse, internal label for Clark & Co's Anchor Sewing Cottons, 7.8cm x 5cm. (4)

£40-80

109

No lot

110

A rectangular tartan ware snuff box (M'Beth), wooden hinge, foil lined interior, 9.3cm.

£60-100

111

Two pieces of tartan ware, comprising; a small rectangular stamp box (M'Donald), two internal compartments, 3cm wide, and a circular rouge pot (M'Beth), 3.2cm. (2)
£50-100

112

Four pieces of tartan ware, comprising; a rectangular pin hinge box (M'Pherson), bone knob, gilt cross border, internal divisions, 11.5cm, a propelling pencil, bone top, 8.5cm, a cylinder ruler, (M'Beth), lacking pencil finial, 16.5cm, and a paper knife (Prince Charlie), 24.5cm. (4)
£60-100

113

Three pieces of tartan ware, comprising; a notebook (Albert), small chip to bottom right front, inside front cover tiled "Notes", inside back cover with days of the week, with pencil, 10cm x 7cm, a circular box (M'Farlane), 5.2cm, and a cylinder rule (Stuart), 20.2cm. (3)
£60-100

114

Three pieces of tartan ware, comprising; a shallow circular dish (Gordon), 10.1cm, an egg cup (Gordon), and a circular box (Albert), 5.7cm. (3)
£50-100

115

Five pieces of tartan ware, comprising; an egg timer (untitled), 8.5cm, a cribbage board (Caledonia), 20.5cm, a tumbler case with glass tumbler (Prince Charlie), 7.8cm, a paper-mache snuff box with tartan lid, 8.2cm and a napkin ring (Prince Charlie). (5) (*Eleanor Johnson Collection*)
£80-120

116

No lot

Treen

117

A late 18th/early 19th century burr yew wood snuff box of rectangular cushion form, with concave sides, the wooden hinged lid brightly painted with flowers, tortoiseshell lining, 12.2cm.
£60-100

118

A late 18th century lignum vitae pounce pot, the pierced broad bowl on a turned pedestal body and circular foot, 10.5cm high, 8.5cm diameter.
£100-200

119

A large 19th century carved and stained wood ladle, the oval bowl with a pierced and carved barley twist stem to a scroll handle, possibly for snuff, 38.5cm.
£40-60

120

Treen, ten small and miniature pieces: A shoe, possible as a pincushion with studs to sole, 5.5cm, a miniature egg and egg cup, an miniature early 19th century snuff box with painted lid, 3.1cm, a mahogany rectangular box with sliding lid, a lignum vitae whistle, 8.5cm, a miniature whistle, 3cm, a turned boxwood circular vinaigrette, 3.2cm, a turned wooden cheroot holder, a small turned boxwood conjurer's trick globe, 5.5cm, a turned boxwood mercury dropper, 6.2cm, and a small turned vase and cover. (10)
£50-100

121

Seven pieces of Treen: A pair of carved clogs, 16cm, an oriental cylinder form tea caddy, 12.2cm, a pair of turned cups and covers, united probably as a condiment, a Norwegian carved jug, a multi-coloured cylinder box inset with numerous smaller boxes within, a painted wooden Dutch tankard, and a cylinder jar with jewelled cover. (8)
£30-50

122

Three 19th century Scottish bickers and a ladle, each bicker in alternate light and dark woods with feathered staves and willow bindings, 9cm, 6cm and 5.8cm, the ladle with turned bowl on whale twist handle, 18cm. (4)
£80-120

123

Twelve pieces of treen, comprising; a cased hone, a rectangular wooden snuff box in burr, 7cm, a boxwood light bulb case, a shoe form page cutter, a razor strop, a papier-mâché spectacle case, a rosewood cylinder counter box with Tunbridge mosaic top, a miniature Italian photograph frame, a brush, two miniature egg cups, and a bone and vegetable ivory combination needlecase/tape measure, 10.5cm. (12)
£40-80

124

Sixteen pieces of treen, comprising; a barrel form box containing a glass tumbler, 10cm, an olive wood page cutter, 30cm, another of shoe form painted with a swallow and inscribed "Meran", another in Sorrento ware, a pair of "Pall Mall" whist markers, 9.2cm, six Sorrento ware napkin rings, a turned lignum vitae and bone mounted light switch, and three other pieces. (16)
£40-60

125

Seven pieces of treen, comprising; a boxwood turned cylinder box with screw cover, 8cm diameter, another with glass liner and base, advert for "E. S. Hull & Co. Shaving Cream ...", 9.2cm diameter, another smaller stamped "Smeeton, Chemist, Leeds", 6cm, a ball form boxwood box, 7.5cm diameter, a square form tea caddy, 8.5cm, a large walnut card marker, 17cm, and a pair of 'Brighton Bun' style olivewood candlesticks, inscribed "Jerusalem". (7)
£40-60

126

Seven pieces of treen, comprising; a turned boxwood turret form money box, 8cm high, a pair of 'Brighton Bun' olivewood candlesticks, cracks, 10cm diameter, an olivewood rectangular box with floral painted lid inscribed "Cannes", catch a.f., buttoned silk interior, 12cm, a cedar wood mushroom form darning, impressed "Kitty Morris", an apple form box, a box inscribed to the sliding lid "Aiguilles pour Gramophone", 9cm, and a stamp and ink box, 14cm. (7)
£40-60

127

Seven pieces of treen, comprising; a circular two tier cake stand, 34cm high, a whitewood box "Souvenirs of Fontainebleau", 16cm, a strop, a turned wooden truncheon by Hiatt, a fish scale remover in soft metal case, marked "Patd. Dec. 25th 77 - Jos. S. Fisher" and decorated with a fish, and two Mauchline ware letter knives, one for 1899 for "The United Asbestos Co. Limited", 34cm, and another "The Popular Paper Knife Registered R.B.M.", 32.5cm. (7)
£30-50

128

Twelve pieces of treen, comprising; two boxwood glove powderers, 13cm, a coquilla egg, 3-inch measure, wooden spinning top, four circular boxes, cased medical instrument, glove stretchers, and a reel on handle. (12) (*Eleanor Johnson Collection*)

£40-60

129

No lot

Reference Books

130

Lambert (Miss): The Hand-Book of Needlework, 1842, blue cloth, spine detached; Commissioners of National Education, Ireland: Manual of Needlework, 1869, cloth; and The Young Ladies' Journal Complete Guide To The Work Table, cloth, 7th edn. (3)

£30-50

131

The Family Crochet Book, Part 2, 1848, paper wraps; Miss Watts' Selection of Knitting, Netting and Crochet, 1843, green cloth gilt; Hope (Mrs.) ed.: The Knitter's Friend, 4th edn, circa 1846, blue cloth gilt; and The Art of Crochet, pub I. Hope. 2nd edn., circa 1849. (4)

£20-40

132

A quantity of reference books, mostly on educational aspects of needlework, including Smith (A.K.): Needlework For Student Teachers (x5); together with other educational books and pamphlets, and loose copies of Fancy Needlework and Needlecraft Practical Journal. (qty) [*Full listing available on request*]

£30-40

133

The Ladies' Work Table Book, 4th edn, 1847, red cloth, 16.5cm x 10.5cm, together with Christie (A.): Samplers and Stitches (x2), Museum of London – Dress Accessories, Medieval Finds, paperback, Swain (S.): The Needlework of Mary Queen of Scots, 1973. (5) (*Diane Pelham Burn Collection*)

£30-50

134

Five children's sewing books, comprising; The Mary Frances Sewing Book – Adventures Among Thimble People, 1913, Philadelphia, most patterns present, together with Sewing Basket Stories, The Little Girls Knitting and Crochet Book, The Little Girls Sewing Book (x2), together with a framed copy of "Little Folks Own Embroidery Page", 32cm x 24cm. (6) (*Diane Pelham Burn Collection*)

£30-50

135

Small sewing booklets and books, comprising; The Royal Exhibition Knitting, Netting and Crochet Book, by W. Carter, green wrap, featuring Crystal Palace, 13cm x 8.5cm, a concertina pattern book also featuring Crystal Palace, decorative card, 7.4cm x 6cm, Edgcomb's English German and General Fancy Needlework – a list of articles sold at Edgcomb's Warehouse, No. 54 Mount St., Lambeth, 8.7cm x 5.5cm, Hart's Fancy Work Book, 1841, 12cm x 8cm, a Guide To Fancy Needlework and Embroidery, 10cm x 6.7cm, The Book of Stitches by Ellen T. Martin, Etiquette for Ladies – Warnes Bijou Books and Chambers Fireside Amusements, 1853. (8) (*Eleanor Johnson Collection*)

£50-100

136

A good selection of reference books, comprising; both editions of Sylvia Groves' History of Needlework Tools, Holmes – Thimbles and a History of Thimbles, Taunton – Antique Needlework Tools, Proctor – Needlework Tools And Accessories, Scott – Stanhopes, Horowitz and Mann – Victorian Brass Needlecases, Brears – The Knitting Sheath (2 copies), Gowan – Thimbles of Australia, Andere – Old Needlework Boxes and Tools, Pinto – Tunbridge and Scottish Souvenir Woodware, Johnson – Thimbles and Thimble Cases (3 copies), Johnson – Needlework and Embroidery Tools, Hartley & Ingilby – The Old Hand-Knitters of the Dales, Thompson – Sewing Tools & Trinkets, Furstenburgh – Tartanware, and others. (qty) (*Eleanor Johnson Collection*)

£50-100

137

Reference books, including; volumes on costume, lace and bobbins, buttons, needlework, including some vintage volumes on stitching and embroidery. (qty) (*Eleanor Johnson Collection*)

£20-30

138

Pinto (E. H.): Treen and Other Wooden Bygones. 1st edn., 1969, lacking dustwrapper. (*Eleanor Johnson Collection*)

£30-50

139

Taunton (N.): Antique Needlework Tools; McConnell (B.): The Story of Antique Needlework Tools; Cummins & Taunton: Chatelaines; Sullivan (K.): Needlework Tools and Accessories – A Dutch Tradition; McConnell: The Story of The Thimble; Rogers (G.A.): American Silver Thimbles; together with T.S.L. and other smaller format publications. (qty)

£40-60

140

The Knitting Sheath by Peter C. D. Brears, reprinted from Folk Life, 1981-1982.

£10-20

141

A useful selection of reference books, including Antique Needlework Tools, An Illustrated History of Needlework Tools, Old Needlework Boxes And Tools, Old-time Tools and Toys of Needlework, various related auction catalogues, three books on lace, and Modern Needlecraft. (qty)

£30-50

142

No lot

Tape Measures

143

Two tape measures, comprising; a white metal example in the form of a standing pig, wound by the tail, tape part lacking, 5.5cm, and a circular example in celluloid, one side with an elephant head, complete tape in inches and centimetres, 3cm diameter. (2)

£40-60

144

Two celluloid novelty tape measures, one in the form of a standing fisherman, with life ring, printed tape at pocket, 5.5cm, and another as a lady's handbag, tape at catch, 3.5cm. (2) (*Eleanor Johnson Collection*)

£40-60

145

Three metal novelty tape measures, comprising; a brass pig, reduced printed tape, 6cm, another in the form of a thimble below a figure of an eastern tailor, complete printed tape, 5.5cm, and a cold painted metal example in the form of an owl, with tape, 4.5cm. (3) (*Eleanor Johnson Collection*)

£40-80

146

Three metal novelty tape measures, comprising; a white metal shoe, complete printed tape wound from the lace and fitted with a pincushion, 6.5cm, a brass kettle, complete printed tape, 5.5cm, and a plated owl with celluloid body, on a tripod base, printed tape, 5.5cm. (3) (*Eleanor Johnson Collection*)

£50-100

147

A cast metal tape measure with cold painted decoration, in the form of a bird, complete printed tape, 4cm. (*Eleanor Johnson Collection*)

£50-80

148

Three novelty tape measures, comprising; an example as an alarm clock, complete printed tape, 6cm, another in Bakelite as a mantel clock, complete printed tape, 5.5cm, and a white metal iron engraved "Louisa Moore 1908", agate handle, complete printed tape, 6.5cm. (3) (*Eleanor Johnson Collection*)

£60-100

149

Two metal novelty tape measures, comprising; a copper finish owl with celluloid body, tape shortened, on tripod base, 5cm, and a white metal owl wound from his top hat, one glass eye lacking, complete printed tape, 5.2cm. (2) (*Eleanor Johnson Collection*)

£40-80

150

Four novelty celluloid tape measures, comprising; a windmill, one sail detached, complete tape, 5.7cm, another as an arch top mantel clock, complete printed tape, 4.3cm, a pear with complete printed tape, 6cm, and another in the form of a galleon, complete printed tape, 6cm. (4) (*Eleanor Johnson Collection*)

£50-100

151

An unusual copper novelty tape measure in the form of a ship's wheel, complete printed tape, "Rd. 128885", 4cm. (*Eleanor Johnson Collection*)

£40-60

152

Four tape measures, comprising; a bell shaped example in lignum vitae with bone spindle wind, reduced printed tape, 5.5cm, a boxwood example in the form of a turret, bone spindle, printed tape, 4.7cm, a rosewood vase form example with spindle wind, shortened printed tape, 4cm, and a ring turned wooden example with carved coquilla overhanging top, bone spindle, printed tape, 4cm. (4) (*Eleanor Johnson Collection*)

£50-100

153

Four tape measures, comprising; a vase form fruitwood example, spindle wound with printed tape, 4cm, a fruitwood cottage style example, worn tape, 4.3cm, a rosewood disc form example with brass winder, complete tape worn, 2.8cm diameter, and a rib turned wooden example with overhanging coquilla carved top, bone spindle, replacement tape, 3.2cm. (4) (*Eleanor Johnson Collection*)

£50-80

154

A good mother of pearl tape measure of barrel form, with spindle wind, the original tape hand inked 1/32, 1/16, 1/8, 1/4, mother of pearl ring tape terminal, 4.7cm. (*Eleanor Johnson Collection*)

£40-60

155

Three bone and ivory tape measures, comprising; an acorn form example, tape reduced, inked in yards, another acorn with Stanhope to spindle (Memory of Sidmouth, 6-view, distorted), printed silk tape and a pierced cylinder form example with overhanging top, largest 4.5cm. (3) (*Eleanor Johnson Collection*)

£40-80

156

An unusual broad silk ribbon tape measure, printed in inches and with trailing leaves and flowers emblematic of the seasons, with ball and rod ends, printed at 36ins "Four Seasons Floral Tape Measure Patented July 6th 18** E.G.B.". (*Eleanor Johnson Collection*)

£40-60

157

Four tape measures, comprising; a circular advertising example for "Ashworth's XX Sewing Cotton", 3.6cm, another "Square and Market Cross, Bearminster and Tunnel", 3.8cm, a porcelain lady figural tape measure "7146 Germany", 8cm, and a wooden owl form example, 6.2cm, all with tapes. (4) (*Eleanor Johnson Collection*)

£30-50

158

Three novelty tape measures, comprising; a copper and brass coffee grinder, complete printed tape, a baluster copper and brass coffee pot, complete printed tape, and a brass semi fluted coffee pot, slightly reduced printed tape, 5cm. (3) (*Eleanor Johnson Collection*)

£40-80

159

No lot

160

No lot

Pin Cushions

161

A collection of pincushions and emeries, including a natural shell example, 6.5cm, a shoe form example, a crinoline half doll, a book form example, a pin stuck bellow form example, 11cm, and two larger format examples. (14)

£50-100

162

An unusual and rare silver and cloth pincushion in the form of a devil or imp, globular cloth body with silver arms, legs and head, the latter with flames rising up the back, over a circular pincushion base in silver frame, Birmingham, 1910, by M. & C., base 8.5cm diameter, 10cm high.

£600-800

163

A large silver pincushion in the form of a standing pig, velvet replaced, standing on a silver base and green marble plinth, minor chips to base, Birmingham, 1903, maker's mark worn, 11cm wide overall, 7.5cm high.

£200-400

164

A rare silver pincushion in the form of a cocked hat, with reeded leaf border, tassel ends, one side with button down flap and pseudo-feathers, velvet infill loose, base silk worn, marks worn but probably Chester with regd. number., 10.5cm wide.

£400-600

165

A silver pincushion in the form of a Glengarry, star pierced top, wool pompom, thistle with coloured stone to one side, fork tail, Birmingham, 1908, by C. & N., Rd. 534072, 9.6cm.

£300-400

166

A crinoline lady pin cushion, with silver upper body, curled hair, hands crossed, Birmingham, 1919, by C. S. * F. S., 8cm high, 4.5cm diameter at base.

£100-150

167

A cushion form velvet pincushion of rectangular form, mounted with a white metal figure of a curled sleeping cat, the cushion with white metal 'rope' frame with corner tassels, 8.5cm x 6.5cm.

£200-300

168

A good 19th century layette pincushion, circular, the border in raised pins with flowers and leaves emanating from a jardinière and encircling the pin stuck inscription "May Flowery Paths be thine Sweet Babe", fringed double border, 20cm diameter.

£100-150

169

An 18th century layette pincushion, rectangular, worked with flowers and entwined hearts above the inscription "I.H.P. E.V.R./ S.F.V.D.S./1.7.7.3" above a crown, on a raised linen patterned ground with a lacework border, 16cm x 3cm.

£60-100

170

An unusual pin ball, late 18th century, formed from numerous wool concentric circles in a variety of colours, minor moth, 7.5cm diameter.

£200-300

171

A good silk jockey cap pincushion, pin stuck in blue and ivory silks, 5.5cm.

£40-60

172

Three pincushions, comprising; a diamond form example in painted velvet with gilt foil border, 5.5cm, a linked set of three heart shaped ivory silk pin edged pincushions, each painted with flowers, 3.5cm, and a rosewood girdle form pincushion, 2.5cm. (3)

£40-60

173

Four pincushions, comprising; a leather and silk circular lobed example, 2.5cm, an engine turned circular mother-of-pearl example, 3.2cm, an oval gilt example with part coloured leaf scrolls, 5.5cm, and a plated brass example in the form of a turtle, 6cm. (4)

£50-100

174

Three pincushions, comprising; a bone example in the form of a set of bellows with pierced decoration, 7cm, a bone tub form example, painted with flowers and other motifs, inscribed "Forget Me Not", 3.5cm, and an ivory 'stacked brick' example of tapering cylinder form, one ring handle lacking, 4cm. (3)

£60-100

175

A rare bone pin cushion in the form of a hot air balloon with gondola, pierced with trailing flowers and leaves, pink silk liner, 5cm high.

£60-100

176

Two lady's shoe form pincushion, comprising; a red glass example with painted decoration, inset pincushion, brass thimble, 8.5cm, and a cast brass example, well-detailed with ribbons, etc., 12cm. (2)

£40-60

177

Four various material pincushions, comprising; a silk jockey cap example, 6.5cm, another as an apple, 3cm, another as a hat, 5.5cm, and a pumpkin form example, 5cm. (4)

£50-100

178

A rare reverse decorated glass pincushion, circular, one side with a view titled "Pembroke College, Cambridge", the other also titled and with the college crest, 4.5cm.

£50-100

179

Five disc form pin wheels, in material, four painted with landscapes, one embroidered with flowers, largest 6cm. (4) (*Diane Pelham Burn Collection*)

£30-50

180

Six pincushions, comprising; a Bristol Card basket form example (Forget me Not/I Love You), 6cm, a silk horseshoe decorated with scraps, 8cm, a patchwork example, 6.5cm, a pin stuck material example as a snakes head, 9cm, another in black velvet as a lady's leg with garter 11.5cm, and a bellow form purse with pin stuck edges, 9.5cm. (6) (*Diane Pelham Burn Collection*)

£40-60

181

Seven pincushions, comprising; two metal shoe examples, another in bisque porcelain, 7cm, two animal figural emery cushions, 5cm and 7cm, and two other animal form pincushions. (7) (*Diane Pelham Burn Collection*)

£40-60

182

Seven pincushions, comprising; a cut bone example as a quiver of arrows, s.d., 5cm, a Mauchline ware (St. Clements Church, Sandwich) girdle form example, 3.5cm, two others in ivory and wood, an ivory disc form example with pierced decoration, 3.2cm, a reverse glass circular example "The International Exhibition 1862", mirror to reverse, and an ivorine pincushion, 3.6cm. (7) (*Diane Pelham Burn Collection*)

£40-80

183

Two rare pin change books, comprising; The History of Harry Heedless, Published by the American Tract Society, No. 150, Nassau St, New York, Series I No. XVI, 16pp, the back cover printed "Improved Patent Pins Manufactured for W. and J. Stuart, New York", 11cm x 6.5cm, and another, History of Beasts, Series I, No. XV, 16pp, paper wraps pierced for pins, 11cm x 6.7cm. (2) (*Diane Pelham Burn Collection*)
£40-80

184

A collection of pin papers, four children's paper needlebooks, a small booklet "Nimble Needles or We Are Seven", and a paper pattern for a Doll Set by McCall, together with a collection of toilet pins, most in cylinder cases. (qty) (*Diane Pelham Burn Collection*)
£20-40

185

An extensive collection of pins, dating from the 14th/15th century onwards, in dated packets or on captioned cards, including lace pins. (qty) (*Diane Pelham Burn Collection*)
£50-100

186

Four pincushions, comprising; a bone example in the form of a barrel, double ended, with gilt mount and wire handle, on ball feet, 4.8cm, a double disc example with roundel and dot border, 4cm, another of tub form with velvet pumpkin top, 3cm, and an ivory heart shaped example one side deeply carved with flowers, 2.7cm. (4) (*Eleanor Johnson Collection*)
£50-100

187

Two pincushions, comprising; a silver shoe with ribbon tie, Birmingham, 1906, by L. and S., 7cm, and a white metal example in the form of a shoe mounted on a roller skate, with wooden wheels, 6.5cm. (2) (*Eleanor Johnson Collection*)
£50-100

188

Three metal frame pincushions, comprising; a painted example in the form of a lifeboat, 10cm, another in brass in the form of a standing pig, 6.5cm, and another in the form of an owl, 4.5cm. (3) (*Eleanor Johnson Collection*)
£40-80

189

Five pincushions, comprising; a neatly embroidered and worked example in the form of a cottage, 5.3cm, a velvet and beadwork rectangular example, 5.5cm, a leather pumpkin, 3cm, an oval tortoiseshell example with inset metal cartouche to each side, 4.7cm, and a circular pin disc, one side painted with a view of a village church, 5cm. (5) (*Eleanor Johnson Collection*)
£50-100

190

Three material pincushions, comprising; a jockey cap pincushion in coloured silks, with tied ribbons, 7cm, an octagonal pin disc in coloured silks, 5cm, and a pin stuck silk patchwork cube, 3cm. (3) (*Eleanor Johnson Collection*)
£40-60

191

Two reverse glass circular pincushions, comprising; an example with a titled view of Salisbury Cathedral, mirror to the reverse, 4.5cm, and another "A Merry Christmas" with winter scene, reverse cracked, 4.5cm. (2) (*Eleanor Johnson Collection*)
£50-80

192

An early 19th century layette pincushion of octafoil form, worked with trailing floral branches encircling "Welcome Sweet Innocent" fringed border, 18cm diameter. (*Eleanor Johnson Collection*)
£50-100

193

Two silver pincushions, comprising; a chick pincushion, Birmingham, 1906, by T. and S., 4cm, the other as a crinoline lady, the upper body in silver, Birmingham, 1922, by C. S. * H. S., 7cm. (2) (*Eleanor Johnson Collection*)
£80-120

194

Four large format pincushions and another, comprising; a well-carved mahogany example in the form of a brogue shoe, 12cm, three dome top pedestal examples, the stem of one fitted with a waxer, and a porcelain example in the form of a pear with leaf, 8cm. (5) (*Eleanor Johnson Collection*)
£40-80

195

Six pincushions, comprising; a small ivory disc form example, engraved to one side with a flower and "Friendship", 2.5cm, another in oak with engraved white metal boss to one side, 3cm, another very similar in mother of pearl, 3cm, another in mother of pearl, one side painted with a flower, 3.2cm, a large bone circular example, one side pierced to reveal the velvet, 5cm, and a rosewood kettle form example, lacking spout, 3.5cm. (6) (*Eleanor Johnson Collection*)
£50-100

196

Pincushions, emeries and a waxer, comprising; a sack form emery inscribed in ink "To keep your needles bright", 5.5cm, a pierced bone double sided pincushion as a jardinière, 5cm, another rectangular, pierced with leaves and flowers, 4.2cm, a woollen strawberry emery, 3.2cm, and a rosewood roundel end waxer, 3cm. (5) (*Eleanor Johnson Collection*)
£40-60

197

Five pin poppets, four in turned wood of acorn or similar form, one green stained, largest 7.5cm, and a vegetable ivory example of tapering form with carved screw-off cover, 3.7cm. (5) (*Eleanor Johnson Collection*)
£60-100

198

An unusual brass and ebonised wood pincushion, circular base with pincushion below a large brass thimble, inscribed "A Thimbleful of Needles" below a pincushion top, 8cm high.
£40-80

199

A silver pincushion in the form of a standing elephant, Birmingham, 1908, by Adie and Lovekin, 4.5cm.
£100-200

200

A silver pincushion in the form of a standing pig, Birmingham, 1906, by B.P.D.C., 4.5cm, and a later pincushion in the form of a hedgehog, 4.5cm. (2)
£60-100

201

Four pincushions and an emery, comprising; an ivory disc form example, one side carved with flowerheads and leaves, 4cm diameter, another in engine turned and cut mother of pearl, 3cm, an oval mother of pearl example, inscribed, 4cm, a mother of pearl cut corner example "Souvenir de Blanbenberghe", 4cm, and a silver mounted strawberry emery, 4cm, worn. (5)
£40-60

202

Three pincushions, comprising; a turned wooden disc form example with inset reverse glass domed panel "The Promenade, Cheltenham", 6cm, a silk disc example, one side worked with flowers and beads, 6cm, and a globe pin wheel in card, 5.5cm. (3)
£40-60

203

A bone disc form pincushion, inscribed to one side "A Present from Harrogate" over a flower, the reverse with roundel form decoration, 4.5cm.
£30-50

204

Four pincushions, comprising; a gilt metal coronation crown, 4.5cm, an engine turned mother of pearl disc form example on green ribbon, 4.2cm, a Mauchline ware trefoil form example, (The Wish Tower, Eastbourne – photographic), 5.3cm, and an oval card pincushion applied with beads and scraps, 7.2cm. (4)
£40-80

205

A large star form pin and bead applied pincushion, central "With Love" panel, silk flags, "From William To Mother", 30cm.
£20-40

206

An early 19th century layette pincushion of circular form, pin stuck with a flower and leaves "Welcome", within a scroll border, fringed, 13cm.
£50-100

207

Two larger format pincushions, comprising; an American Indian example of star form, worked in coloured beads with bead tassels, 23cm max., and a heart shaped glass bead pin stuck example, centred by a silk panel with the badge of the West Kent Regiment, 16cm. (2)
£40-60

208

No lot

209

No lot

Work Boxes, Etuis & Companions

210

An unusual papier-mâché Lady's Companion, the whole painted with a landscape, titled to the front "Windermere Lake" and inscribed "Jennens and Bettridge", the sky painted top with white metal tablet, interior in red velvet with usual compartments and with skein holder/ tool card, bone notelet, steel scissors, stiletto, and agate handled crochet hook, 9.5cm x 6.5cm x 4.7cm.
£100-200

211

A late 19th century German work box of rectangular form, grained sides, the lid transfer decorated, interior lining bright and fresh, complete with tray, 23cm x 15.5cm x 8cm.
£20-40

212

Two sewing boxes and a small work box, the walnut sewing box with domed top and geometric coloured inlays, original purple silk and silver foil interior, 25cm, a basket weave sewing box, 13cm, and an oak floorstanding work box with compartmentalised drawer, 25cm. (3)
£30-50

213

An unusual sewing companion, circa 1925, in the form of a book titled to the spine "Plain And Fancy Work – Sister Susie", the 'cover' depicting sewing tools impressed in gilt around the title "Sewing Society Secrets", the interior with thimble, scissors, tape and pincushion, marked "C.L. Tussell, N.Y, Reg. U.S. Pat. Off", 10cm x 7.6cm.
£30-50

214

An unusual lady's companion, in green morocco with gilt tooled decoration and colour onlays below a canted top section, the interior with thimble, pencil, silver fish bodkin, pincushion, note card, folding leather tool holder with steel scissors and a few other tools, 10.2cm x 6cm x 4cm.
£60-100

215

A fine eight piece silver sewing set, attributed to Joseph Taylor of Birmingham, in apparently unused condition, circa 1820, the red leather rectangular case with silver lid tablet, the interior in blue velvet with cream edgings and a full complement of richly decorated silver fittings, comprising; swing handled basket form pincushion, marked under the handle "I.T.", a thimble with engraved frieze, a tape measure with complete tape printed in inches over a floral border, a fish form bodkin, a pair of scissors with oval section tapering blades, acorn and floral arms, complete with sheath, tweezer/earspoon, folding single blade knife and a stiletto, case, 10.5cm x 9cm x 3.5cm. (For a similar example with six tools only see Taunton (N.): *Antique Needlework Tools. Page 128 Colour Plate 142*) (Betty Wolf Collection)
£400-600

216

A mid 19th century rosewood, brass and mother of pearl inlaid etui, of oval section and tapering form, with steel tools, comprising; needlecase, scissors, bodkin, stiletto and silver thimble, most matched, 12cm x 6.2cm max. (Diane Pelham Burn Collection)
£50-100

217

Two children's sewing boxes, comprising; an ivory rectangular example with metal mounts, 11cm, with a few tools and an "Almanack Postal 1884", another similar, the lid with colour print of four young girls, cantilever form, 11.2cm, with a few tools, including an earlier set of steel scissors, and a cardboard box with reels labelled "Dolly's Little Set of Silks", 4.6cm. (2) (Diane Pelham Burn Collection)
£40-80

218

A Regency red morocco leather, gilt tooled and gilt mounted sewing box, probably for a child, of sarcophagus form with gilt ring lid handle, gilt escutcheon and paw feet, the interior with silk monochrome print to lid over a compartmentalised lower section, the leather tool card with miniature gilt scissors, needlecase and stiletto, ivory cylinder tape measure with pierced body and printed ribbon tape commencing at 9ins, two ivory cotton barrels, a reel and a waxer, fitted pincushion and needlebook, 20cm x 12cm x 9cm. (*Eleanor Johnson Collection*)
£150-200

219

Two sewing panniers for children, one in cardboard with bird printed paper below a hinged lid with floral scrap cloth handle, interior advertising print for "The Prince's Needle Basket" with diamond registration mark, 9cm, the other in floral material with swing handle and twin hinged lids fitted with pincushions, 14.5cm. (2) (*Eleanor Johnson Collection*)
£40-80

220

A sewing companion in red morocco, titled in gilt "A Present From Wales", wallet form with needle flannel, double ended pincushion and compartment, 8cm x 5cm. (*Eleanor Johnson Collection*)
£40-60

221

A delightful sewing companion for a child, the cross hatched brown leather case with gilt cartouche within a belted oval, gilt brass clasp, the interior complete with gilt brass needlecase, thimble scissors, bodkin and stiletto set on blue velvet, 6cm x 4cm. (*Eleanor Johnson Collection*)
£80-120

222

An unusual sewing companion of cylinder form, green stained, screw-off cover with circular domed pincushion, the interior fitted with whitewood needlecase, rosewood triple reel, a tape measure and a bone thimble with gilt rim, mounted on an iron bracket with wooden clamp fitting, 19cm high. (*Eleanor Johnson Collection*)
£100-200

223

A "Lady's Companion" of conventional book form, gilt tooled and with colour onlays to all surfaces, titled to 'spine', interior with tool card/skein holder with printed trade label "Made By J. M. Pearce, 77 Cornhill, London", lacking fittings, 9.5cm x 6cm x 4cm. (*Eleanor Johnson Collection*)
£40-60

224

A miniature sewing companion in the form of a serpentine front mahogany knife box with sloping lid, circa 1920, the interior with scissors and a rectangular gilt frame, brass clasp, leather base titled in gilt "Leuchars, London", 10cm x 6.5cm x 6.8cm. (*Eleanor Johnson Collection*)
£40-80

225

A mother of pearl sewing companion of rectangular form, canted lid with central initialled white metal tablet "M.R.W.", interior in blue velvet with matched steel scissors, mother of pearl needlecase, thimble, bodkin and stiletto, 11cm x 6.5cm. (*Eleanor Johnson Collection*)
£50-100

226

A continental sewing set in rectangular leatherette case, with flush set gilt metal tools comprising stiletto, bodkin, thimble, scissors, needlecase and crochet hook, 14cm x 9.5cm. (*Eleanor Johnson Collection*)
£40-60

227

A leather cased sewing companion of rectangular form, slight loss to catch area, the velvet and silk lined interior with silver floral decorated tape measure, slightly shortened printed tape, a silver girdle form pincushion, a waxer with only one of two silver ends, and a silver thimble, 8cm x 3.6cm. (*Eleanor Johnson Collection*)
£40-60

228

A Georgian mahogany sewing and reel box of rectangular form, the hinged lid revealing a compartmentalised interior with a removable bar fitted with twelve whitewood reels, single side drawer with gilt axe head handle, 23.5cm x 12cm x 10cm. (*Eleanor Johnson Collection*)
£50-100

229

An early Anglo-Indian sandalwood sewing box, probably for a child, of sarcophagus form inlaid with a bone and pewter in the Sadeli style, brass side handles and feet, compartmentalised and lidded interior below a mirror, 18cm x 13cm x 8cm. (*Eleanor Johnson Collection*)
£50-100

230

An Anglo Indian 19th century rosewood sewing box of sarcophagus form, crossbanded raised panel to lid, the compartmentalised and lidded interior with ivory multiple reel, tape measure, waxer, six variant ivory cotton barrels and other fittings, 33cm x 22.5cm x 11cm. (*Eleanor Johnson Collection*)
£100-200

231

A Victorian coromandel wood sewing box of rectangular form, mother of pearl escutcheon and lid cartouche, the interior with letter compartment over a compartmentalised and lidded tray with seven variant mother of pearl top reel holders, four mother of pearl silk winders, mother of pearl top tape measure and emery, a thimble and four tools, tray and lid panel refurbished, 30.5cm x 22cm x 13cm. (*Eleanor Johnson Collection*)
£150-200

232

A mid-Victorian rosewood sewing box of rectangular form, inlaid to the top and front with cut mother of pearl flowers, the interior with letter compartment to lid over a lidded and compartmentalised tray in crimson paper and silk, with four various mother of pearl top reel holders, a similar emery and five various tools, 30cm x 22cm x 12cm. (*Eleanor Johnson Collection*)
£50-80

233

A Victorian sewing box of rectangular form, in pale veneer, the lid and front with ebony diamond trellis inlay with coloured feather inlaid bandings, the interior in quilted green silk with green and white cord edging, 25.5cm x 17.5cm x 14cm. (*Eleanor Johnson Collection*)
£40-80

234

An unusual "Lady's Companion" of conventional book form, titled to the 'spine', three sides decorated with unusual geometric diamond panels, gilt tooled and coloured interior with tool card/skein holder, four steel tools, memorandum, pencil, folding knife, silver thimble, 9cm x 5.5cm x 5cm. (*Eleanor Johnson Collection*)
£80-120

235

Two 19th century ivory etuis, one of curved end rectangular form, engraved gilt lock and hinges with three only of four silver gilt tools, comprising; needlecase, thimble and stiletto, 11cm, the other of shaped outline, initialled "F.C." to lid, damage to lid above catch, with four only of five silver gilt tools, comprising, scissors, one blade s.d. to tip, stiletto, needlecase and bodkin, 10.5cm. (2)
£100-150

236

Two cased sewing companions, 20th century, comprising; a purple oval cased example with a full complement of five white metal tools, stamped "8305", the lid lining titled "G. F. Hailengren, Juvelerare, Malmo, Vaxjo", case 14cm, and a rectangular green paper covered set, with a full complement of six white metal tools, case 13cm. (2)
£50-100

237

A mixed silver and steel sewing companion, the rectangular paper covered case with a full complement of tools, comprising; a white metal crochet hook and needlecase, a hallmarked silver thimble, decorative steel cut scissors and a bodkin case, 13cm x 11.5cm.
£30-50

238

Three cased sewing companions, comprising; a blue covered rectangular case with full complement of white metal tools, comprising; seam knife, bodkin, scissors, thimble, needlecase and crochet hook, 16cm x 10.5cm, a set of silver handled scissors and thimble, in leatherette teardrop case, 12cm, a black leather wallet form example, worn, with four tools, 9.5cm x 7cm. (3)
£50-100

239

A lady's companion of conventional book form, in tan leather, titled to the 'spine' and with elaborate gilt tooling and colour onlays, initialled and dated "H.H. – 1843", interior with leather needle wallet, mirror, notelet, thimble, mother of pearl handled folding knife with silver blade, pencil and a later scent bottle, 9.5cm x 6cm x 5cm.
£60-100

240

An early 19th century Anglo-Indian carved sandalwood and Sadeli work sewing box of sarcophagus form, the interior with lidded and compartmentalised tray, ivory and Sadeli work fittings, comprising; thimble, pair of cotton barrels, pseudo tape measure, and a pair of lidded circular boxes, 25cm x 17cm x 11cm.
£80-120

241

An attractive French sewing box in amboyna, of rectangular form, the lid inlaid in brass with a cartouche amid leaf scrolls heightened with mother of pearl dots, within a brass line, the lid edge and base mould in gilt brass, the interior with a green velvet tray with a full complement of bone and other fittings, including four reels, shuttle, stilettoes, button and tambour hooks, needlecase, bodkin, knitting needles, steel scissors and thimble, the lid in buttoned green corded silk with a central mirror, 26.5cm x 19.5cm x 11.5cm.
£150-250

242

A continental leather etui in brown crosshatched leather with steel hinge mount and catch, the fitted interior with glass scent bottle and stopper, an ivory swivel leaf notelet and stylus, some fittings lacking, 9cm x 4.7cm.
£40-60

243

A Georgian satinwood sewing table, the rectangular dropflap top with ebony line inlay over an end drawer and sliding work bag, on square tapering legs, 51cm x 37.5cm x 73cm.
£250-350

244

A Palais Royal style satinwood sewing box, the curved lid with steel handle, the ogee front with mother of pearl escutcheon, the tray in brown velvet with ivory thimble, two bone star winders, s.d., a bone cylinder needlecase, a stiletto, steel scissors and bodkin, the lid fitted internally with a mirror, the tray with squab, 19cm x 8cm x 5.5cm.
£80-120

245

A Palais Royal style rosewood and inlaid sewing box, the curved lid centred by a mother of pearl cartouche with boxwood leaf form inlay with further boxwood lines, the ogee front with boxwood escutcheon, the tray in blue velvet with embroidered pincushion, two circular mirror based apertures, silver mounted stiletto, scissors, needlecase, replacement silver thimble and mother of pearl bodkin, the lid fitted internally with a mirror, brass ball feet, 19cm x 8cm x 6.7cm.
£80-120

246

A George III satinwood sewing box of sarcophagus form, the canted lid with a geometric panel of vandykes in a variety of coloured and natural woods, oval silver escutcheon, ebony edge lines, on bun feet, the compartmentalised mahogany tray with a central lid, 23.2cm x 18cm x 12cm.
£100-200

247

A Victorian burr walnut sewing box of rectangular form, with mother of pearl escutcheon and lid cartouche, the interior with compartmentalised tray with green velvet lids and pincushions, below a ruched silk lid panel in tooled leather frame, with a few tools, 29.5cm x 21.5cm x 13.5cm.
£50-100

248

A Palais Royal sewing box of sarcophagus form, in burr walnut, the curved lid with mother of pearl central cartouche within a carrying handle, the lid with cut steel border, over tapering sides, on brass ball feet, the tray in ivory velvet with embroidered pincushion, four circular mirror apertures, lacking winders, a stiletto with mother of pearl handle, a pair of scissors with gilt mounts and mother of pearl handles (blades shortened), a mother of pearl bodkin, a replacement mother of pearl stiletto handle, a rectangular mother of pearl needlecase (joint damaged), and a gold thimble (repaired), the tray with embroidered silk squab below a damaged mirror, 17.5cm x 12cm x 8.5cm.
£100-200

249

A French Lady's Companion in orange lacquer with gilt tooling, brass latch mount and hinge, the fitted interior with steel scissors, stiletto, drawer form pincushion and thimble stand, silver thimble, wear to corners, 9cm x 7cm x 3.5cm.
£50-80

250

Cox & Co.'s London Haberdashery Cabinet, of rectangular form, in figured walnut, brass escutcheon and lid tablet, the lid interior with colour advertising print featuring the Houses of Parliament over a compartmentalised base, 43cm x 27cm x 10cm.

£30-40

251

No lot

252

No lot

Reels, Reel Boxes & Reel Stands

253

A Victorian brass reel stand, the scroll swirl base to a baluster stem below two pierced circular tiers, fitted with six reel spikes below a brass finial, 28cm high, 12.5cm diameter. (*Eleanor Johnson Collection*)

£50-100

254

A Victorian rosewood reel stand, the circular turned base on three bun feet, the turned tapering pedestal to a circular tier with six reel spikes below a further circular tier (s.d.), and a vase form pincushion, 19cm diameter max., 30cm high. (*Eleanor Johnson Collection*)

£50-80

255

Three small 19th century rosewood reel stands, comprising; a two reel example with central pincushion, on a rectangular base fitted with a drawer on four bun feet, 11cm wide, 12cm high, and a circular base example with three reel spikes and a thimble stand, with central raised pincushion, 9cm diameter, 9.5cm high, and a similar example, broken at base, 9.5cm diameter, 10.5cm high. (3) (*Eleanor Johnson Collection*)

£50-100

256

Two small 19th century rosewood reel stands, comprising a rectangular example raised on ball feet and fitted with six reel spikes divided by a cornucopia form pincushion and remnants of a vase form tape measure, 15.5cm, and a circular example with four reel spikes and a thimble stand, with central raised pincushion, 9cm diameter, 9.5cm high. (2) (*Eleanor Johnson Collection*)

£50-100

257

A 19th century turned elm or stained fruitwood reel stand, circular base with baluster pedestals supporting three graduated circular tiers with twelve reel spikes and three thimble stands below a vase form pincushion, 14cm diameter max., 31cm high. (*Eleanor Johnson Collection*)

£50-100

258

A 19th century mahogany reel stand, the circular base on ball feet and fitted with eight reel spikes with a baluster stem supporting a further circular tier, with six reel spikes below a vase form pincushion, 15cm diameter max., 29cm high. (*Eleanor Johnson Collection*)

£50-100

259

Two 19th century small reel stands, comprising; a walnut and inlaid example the circular base on ball feet with six reel spikes and central boxwood spiral turned carrying handle, 11.5cm diameter, 11cm high, and a rosewood example on circular base, to a rotating circular tier with four of five reel spikes and a thimble stand with raised central pincushion, 10.5cm diameter max., 17cm high. (2) (*Eleanor Johnson Collection*)

£50-100

260

A 19th century rosewood reel box and two wool ball holders, the reel box of circular form on three bun feet, s.d., with three bone thread apertures below a circular turned lid with central pincushion, sides split and re-glued, 11cm diameter, 10cm high, a lignum vitae wool bowl, 7.5cm diameter, and walnut cylinder wool ball cage, three finials damaged and probably originally with handle, labelled to the base "Miss Helen Holbeche, Northgate, Warwick", 9.3cm diameter, 11cm high. (3) (*Eleanor Johnson Collection*)

£40-80

261

Three white metal cylinder form reel containers, one initialled to the top and with raised borders, 3.2cm, another with leaf scroll embossed decoration, 3.5cm, and a shallow example with a pierced leaf scroll frieze, 1.5cm, all stamped "Sterling". (3) (*Eleanor Johnson Collection*)

£40-60

262

Four reels and a reel holder, comprising; two gilt brass mounted wooden reels, both for W. Evans and Co., Derby, each approximately 2.7cm high, two variant size wooden reels for I. P. Clarke's Excelsior with painted and cut tops with central labels, 4cm and 2.5cm, and an ivory reel, one end with floral decoration, 3.5cm. (5) (*Eleanor Johnson Collection*)

£30-50

263

A rare Ashworths cotton world globe, the glove with bone top aperture and with circular label "Ashworth's 120 xx Machine Cotton", rotating on an ebonised circular base with a label to underside "Ashworth's Machine Cotton ... Awarded Only Gold Medal, Melbourne, 1880", 7.5cm diameter, 10.5cm high.

£100-200

264

A collection of wooden and other reels, including five boxes, full or part sets, together with a collection of card wound and other threads. (qty)

£30-50

265

A 19th century mahogany reel stand, the circular turned base on four bun feet, with eight reel spikes and two thimble stands, the central pedestal supporting a dish below a vase form pincushion, 20cm diameter, 30cm high.

£100-150

266

Three large reels and a wool winder, comprising; a pair of wooden reels labelled for "Ermen & Roby Ltd. Manchester, 5000 yards", 14cm high, a J. & P. Coats one mile reel, labels worn, 9cm, and a brass and ivory wool winder, Mora & Mattson, 20cm. (4)

£10-20

267

An unusual mid-19th century mahogany reel stand, the turned circular base with turned pedestal supporting a rotating octagonal open box with eight reel spikes with turned apertures, centred by a cup, downturned finials, 18cm wide, 14.5cm high.

£100-100

268

A set of four reels and matching waxer, the reels with engine turned mother-of-pearl tops to brass stems and bone bases, 3.2cm diameter, the waxer 2.5cm. (5)

£50-100

269

An unusual 19th century mahogany reel stand formed from two flower pierced circular tiers with four ball finial brass rods fitted with a set of 20 uniform reels below a cup form pincushion the base on brass ball feet and centred by a thimble stand, 20cm high, 10 cm dia. contained in a glazed mahogany case with circular glazed aperture to the top.

Spool Knives

270

A spool knife and a crochet ball wrist holder, the silver plated spool knife with wrist bangle with chain supporting a scrolling frame with rod, 24cm, the other marked "The Wristlet Crochet Ball Holder" with patent details, 17cm, together with a cardboard cylinder box embossed "J. & P. Coats, Paisley", 7.8cm diameter. (3)

£40-60

271

A silver plated spool knife, the chatelaine style clip with pierced female mask mount to a short chain with 'C' scroll mount, the stirrup frame with leaf scroll engraving to a ball end bar, clip marked EPNS, the stirrup with diamond registration mark for 22nd Feb. 1876, indistinct maker's mark, 9.5cm wide.

£50-100

272

A silver spool knife, the plain mount with chain to a heart scroll mount, the stirrup frame to a ball end bar, Birmingham, 1899, maker L.E., 9cm

£100-200

273

No lot

Winders

274

Twelve cardboard silk and cotton winders, mostly of snowflake form and with advertising, largest 10cm. (12)

£20-30

275

Nine wooden cotton winders for children, all of figural form, including three of children, a donkey and a goat head, a pair of scissors, a pair of cross form with clown and elegant lady, and another of a man in a top hat, largest 11cm. (9) (*Diane Pelham Burn Collection*)

£50-100

276

Five unusual silk winders, comprising; a Maltese cross example in polished marble, 3.2cm, a large snowflake in polished elephant tooth, 7cm, a rectangular example with inward curving sides in polished agate, another of cross form in polished green stone, 2.5cm, and a snowflake in white polished stone, 5cm. (5) (*Diane Pelham Burn Collection*)

£80-120

277

Seventeen ivory and bone silk and cotton winders, comprising; a large example carved and shaped as a fish, 12.5cm, a waisted large bone winder, 10cm, a set of three in ivory, rectangular, 4.5cm, a pair, 3.5cm square, three various multiple ivory winders, 4.5cm, a set of three of circular cross form in bone, 3.2cm, another smaller set of three, 2.3cm, and a square form ivory example with circle form corners, 4.5cm. (17)

(*Diane Pelham Burn Collection*)

£80-120

278

Four ivory and bone silk winders, comprising; a cross form example with floral painted decoration, possibly French prisoner-of-war work, 7.7cm, an ivory rectangular example of shaped form with central carved and pierced leaf panel, 4.5cm, and two multiple winders, one of stick format, the other rectangular pierced with circles, 8.2cm and 4.2cm. (4) (*Diane Pelham Burn Collection*)

£50-100

279

Twelve wooden silk winders, two in olivewood, one with inlaid swallow, inscribed "Je Reviendrai", 4.5cm and 5.2cm, an elaborate wooden example inscribed in ink "Sarah, Beech From Levens", 6.2cm, another with carved inscription "Handeck 1851", 5.4cm, a set of three in alternate light and dark woods of star form, 4.7cm and five various, largest 6.5cm. (12) (*Diane Pelham Burn Collection*)

£80-120

280

An unusual 18th century silver silk winder of double cross form, with engraved decoration, struck to each side with the maker's mark "C.F." or "G.F.", in an oval, 8.2cm. (*Diane Pelham Burn Collection*)

£50-100

281

Thirteen metal silk and other winders, comprising; a silver snowflake example with ring suspension, 5cm, a tubular brass example on chain and ring, 6.5cm, an elegant brass cross form example initialled "E.G.", 6.8cm, a white metal example as a boy wearing a fez for the "Boye Needle Co., Chicago", 5.5cm, and nine others. (13) (*Diane Pelham Burn Collection*)

£40-80

282

Eight silk winders in tortoiseshell, horn and jade, comprising; a large multiple stick form horn winder, 10.8cm, three tortoiseshell examples including a multiple, largest 6.3cm, a cross form dark tortoiseshell example, initialled "R.H.", 4.6cm, two other examples, possibly in bois durci, and an octagonal leather example with central needlework of a jardinière of flowers to one side, 4.5cm. (8) (*Diane Pelham Burn Collection*)

£50-100

283

Fourteen wooden silk winders, comprising; a large inward curving sandalwood example with Sadeli ware edge, 11cm, a wooden example with pokerwork angel, 4.8cm, a carved and signed Japanese example, 6cm, five various and six various Japanese painted examples. (14) (*Diane Pelham Burn Collection*)

£40-80

284

Ten mother of pearl and abalone shell silk winders, comprising; a Cantonese engraved snowflake, 4.2cm, another similar of star form, with ball points, typically engraved, 5cm, six other mother of pearl examples, including three small ones, and two abalone shell examples, 6cm and 4.6cm. (10) (*Diane Pelham Burn Collection*)

£40-80

285

A collection of silk and wool winders, including; cardboard, metal, plastic and other materials, many with advertising content. (44) (*Diane Pelham Burn Collection*)
£40-80

286

Twelve silk winders, comprising; a cut and shaped green glass example, 3cm x 2.6cm, a pair of flowerhead pierced form in mother of pearl, 2.4cm diameter, six wooden examples, and three others. (12) (*Eleanor Johnson Collection*)
£80-120

287

Three silk winders comprising; a flashed blue glass square form examples with mirror reverse, 2.5cm, a mother of pearl flower head example, 4cm, and a rosewood rectangular example, 4.2cm. (3)
£40-60

288

No lot

289

No lot

Stilettoes

290

Ten stilettoes, comprising; two turned ivory examples, one lacking pricker, 7cm, a silver handled example, a steel example, another in silver gilt, and five others, some s.d. (10) (*Eleanor Johnson Collection*)
£40-60

291

Four lace prickers/stilettoes, comprising; a rosewood ring turned example with screw cover, 7cm, two turned ivory examples of double baluster form, and another, the upper section fitted as a tapering needlecase, 11.7cm. (4)
£40-60

Knitting

292

A 19th century fruitwood goosewing knitting sheath, with chip carved decoration and initials to one side, attributed to Middleton in Teesdale, 22.5cm.
£60-100

293

A 19th century fruitwood goosewing knitting sheath, carved to one side with a trailing leaf pattern and with carved inscription "J. Dawson, 1880", 25cm.
£80-120

294

An early 19th century fruitwood knitting stick, of spear head and block form with chip carved mount.
£40-60

295

A dated fruitwood knitting stick, of curved form with cross cut decoration and with a cube inscribed "1844 H M", 22cm.
£50-100

296

Four 19th century knitting sticks and sheaths, two light wood goosewing examples, 28cm and 23cm, another in oak, 20cm, and a turned tapering example, 14cm. (4)
£50-100

297

A light wood goosewing knitting sheath, chip carved to one side and inscribed "H. Jarn 1917", turned terminal to brass aperture, 21cm.
£40-80

298

A 19th century knitting stick of turned form, with leaf carved decoration below a button terminal, carved with a flowerhead, 16cm.
£40-80

299

A good early 19th century ivory 'knitting nancy', the handle of baluster form below three spikes, one with old repair, one slightly re-shaped, 11cm.
£80-120

300

Six children's painted figural knitting nancys, with painted and printed decoration, largest 10.5cm, and two others. (6) (*Diane Pelham Burn Collection*)
£30-50

301

Three pairs of knitting needle protectors, comprising; a continental silver pair modelled as boots with spurs united by a chain, an ivory pair of tapering form, and another ivory pair with pierced and turned decoration. (3) (*Eleanor Johnson Collection*)
£50-100

302

Two knitting sticks, comprising; a 19th century curved mahogany example, the curve with a band of coloured geometric inlay to a glazed panel, with replacement name panel "Eliza", bone diamond inlays to side, 17cm, and a mahogany example with carved wooden chain to a lantern spike, 31cm. (2) (*Eleanor Johnson Collection*)
£50-100

303

Two knitting sticks, comprising; an early 19th century fruitwood example with hook, 15cm, and an elegant turned fruitwood example with three turned ivory bands, 19cm. (2) (*Eleanor Johnson Collection*)
£60-100

304

Two knitting sticks, comprising; a goosewing example with turned terminal, 24cm, and a turned tapering example with ivory mount, 19cm. (2) (*Eleanor Johnson Collection*)
£50-100

305

Three 19th century turned tapering knitting sticks, largest 24cm. (3) (*Eleanor Johnson Collection*)
£50-100

306

Knitting needle protectors, comprising; a pair of hoof form, 4.7cm, a pair in turned bone, two wooden pairs, and a silver pair (one with dent), Birmingham, 1910. (5) (*Eleanor Johnson Collection*)
£30-50



143



144



145



146



147



148



149



150



151



152



153



154



155



156



157



158



163



164



165



166



167



168



169



171



172



174



175



176



177



178



181



183



187



188



189



190



191



192



193



194



196



198



199



201



202



203



206



210



215



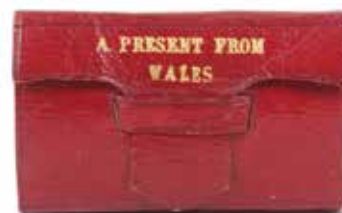
218



213



219



220



222



221



223



224



227



229



233



234



239



241



244



245



246



248



249



253



259



260



267



268



271



272



275



276



277



278



279



280



287



300



302



303



307



308



311



316



317



323



324



325



326



335



337



339



341



347



348



349



350



351



352



353



354



358



359



360



363



364



366



367



368



369



375



377



378



380



382



383



385



397



400



402



404



407



409



410



417



418



419



421



423



429



430



436



439



440



446



447



449



452



453



454



457



458



459



462



466



469



470



471



474



476



487



488



489



490



491



495



497



503



504



505



506



507

508



509



516



517



518



520



521



523

527



535



536



543



544



546



547



548



550



553



566



567



569



572



581



582



591



592



596



599



600



601



602



603



614



615



627



630



631



636



650



652



659



664



665



667



669



670



671



672



675



676



680



683



685



689



690



691



692



693



694



695



696



697



698



699



700



701



702



703



704

307

A pale mahogany circular wooden ring for peg-knitting, 22cm diameter. (*Eleanor Johnson Collection*)

£20-30

308

A dated 18th century fruitwood knitting stick, the curved blade mount carved with the date "1775" over a heart, initials "M.G." and a geometric motif to a reeded shaft and chip carved terminal, 17cm. (*Eleanor Johnson Collection*)

£100-200

309

Three 19th century knitting sheaths and sticks, comprising; a fruitwood example with crude carved decoration, initialled and dated "D. and E. G. 1839", with star and 'A' scratched decoration, 15cm, another with wavy stem, 17.5cm, and a crude fruitwood goosewing example with brass cap, 25.5cm. (3)

£100-150

310

Three pairs of continental silver knitting needle protectors, comprising; a pair in the form of coachman's or horseman's boots, on chain, another pair in the form of lady's boots, with stockings and dress edge, one initialled "G.J.", on chain, and another pair of tapering hexagonal form, on chain. (3)

£50-100

311

Three pairs of continental silver knitting needle protectors, comprising; a pair of leg form wearing pumps with ribbon ties over stockinged legs, on chain, a pair in the form of coachman or horseman's boots, on chain, and a pair of tapering decorative form. (3)

£50-100

312

An early 19th century chip carved fruitwood knitting sheath, with lantern and ball over a tapering handle, carved initials "M.P.", and other later inscriptions, 21.5cm.

£80-120

313

Two knitting sheaths, comprising; a curved mahogany example with coloured geometric inlay, with a scroll terminal, 17.5cm, and a turned tapering carved example in mahogany, 22.5cm. (2)

£80-120

314

Two knitting sheaths, comprising; a fruitwood scroll example with turned terminal to a brass band, 26cm, and a turned tapering red stained example, 16cm. (2)

£40-80

315

An American white metal wool ball holder, the plain spindle on a ring and chain to a wrist bangle, with leaf scroll decoration, stamped internally "H. R. Co. Sterling", 19.5cm.

£40-80

316

Two purling pins, comprising; a steel example on chain to a bone ring, 23cm, and a silver example, probably converted from a silver spoon, 6cm. (2)

£30-50

317

Two knitting nancys and a bone lucet, comprising; a boxwood knitting nancy with three long points to a turned body, 11.3cm, another smaller boxwood example with six brass points, 6cm, the lucet 9.5cm.

(3)

£40-80

318

No lot

319

No lot

Crochet/Tambour

320

Two tambour hooks, and another incomplete, comprising; an ivory example of slender form, steel turn key, another turned and carved, steel turn key, end section split, and a part only mother of pearl example, largest 15cm. (3) (*Eleanor Johnson Collection*)

£40-60

321

A steel crochet set in turned rosewood cylinder case, the handle with six screw hooks, 9cm. (*Eleanor Johnson Collection*)

£40-60

322

A gilt metal crochet set, in ivorine cylinder, the handle with six screw hooks, 9cm.

£20-50

323

Two leather cased crochet/tambour sets, and another, one in red grained leather with turned steel handle and complete set of six hooks in red velvet inset, 8cm x 3cm, another in black leather, with turned ivory handle with chuck fitting and six hooks, in red velvet inset, 8.4cm x 3cm, and an ebony cylinder cased set, with spiral blued steel handle and five only of six hooks, 9cm. (3)

£50-100

324

A good tambour/crochet set, with stiletto contained in a brown leather and gilt tooled wallet form case with part gilded steel catch, with six steel hooks, two variant steel handles, and a bone shuttle, near mint, 8cm x 4.2cm closed.

£50-100

325

A good Dutch silver tambour hook, in three sections, the screw-off cover also fitted with a hook, blued steel turn key, screw-off bulbous handle with delicately engraved decoration and initialled "G.R.", marked EL/U6/triple crown, and a further indistinct mark, 15cm.

£50-100

326

Two tambour hooks, comprising; a good three section ivory example with steel mount and turn key, the body with turned and carved decoration, with hook, 14.5cm, and a tambour or crochet hook, with plated mount and baluster form fossilised wood handle, with hook, 13.5cm. (2)

£40-80

327

A fine ivory and gold pique tambour hook, in three sections, with gilt turn key and bands, the body with gold dot decoration, the terminal with gold dot leaf scrolls, with two hooks, 12.7cm.

£100-200

328

Sixteen crochet and tambour hooks, including an agate handled example, 11.2cm, various bone and ivory examples, patent and others. (16)

£40-80

329

No lot

330

No lot

Clamps

331

A polished steel sewing clamp, the rectangular frame below a trough form pincushion, 11.5cm.

£20-30

332

Three steel sewing clamps, comprising; a reel top example, 13cm, another with trough form pincushion top, 12cm, and a curved frame example, with hook top, s.d., 9cm. (3) (*Eleanor Johnson Collection*)

£50-80

333

A brass hemming bird clamp, the rectangular frame fitted with an acorn top needlecase below a sprung bird clip and a vase form pincushion, 13.5cm. (*Eleanor Johnson Collection*)

£40-60

334

A brass hemming bird clamp, the floral decorated rectangular frame mounted with a circular pincushion below a sprung bird clamp the bird's back mounted with a pincushion, Patent inscription indistinct, 12cm. (*Eleanor Johnson Collection*)

£40-60

335

An unusual rosewood sewing clamp, the ring turned rosewood rectangular frame below a vase form pincushion and cottage style tape measure, the complete tape inked in nails, 11cm. (*Eleanor Johnson Collection*)

£50-100

336

Two rosewood sewing clamps, both with ring turned rectangular frames below spindle reels with cup tops, 13cm. (2) (*Eleanor Johnson Collection*)

£40-80

337

Two rosewood sewing clamps, one with turned frame below a circular tier mounted with a reel below a vase form pincushion, 15cm, and another with cylinder frame below a tape measure with inked ribbon and a circular pincushion, 13cm. (2) (*Eleanor Johnson Collection*)

£50-100

338

Two sewing clamps, comprising; a Cantonese carved ivory example, 12.5cm, and a boxwood and ivory example with reel top, 18.5cm. (2) (*Eleanor Johnson Collection*)

£30-50

339

A good pair of mid-19th century oak and bone winding clamps, the barrel form bases with bone screws below tapering spools, with bone rods and cup tops, 23cm high. (2)

£50-100

340

Two steel sewing clamps, comprising; a rectangular frame example below a scrolling sprung clip and pedestal pincushion, 16cm, and another with pincushion only, 12cm. (2)

£30-50

341

Three sewing clamps, comprising; a wooden example with book form clamp below a tapering spool and cup top, 15.5cm, an ivory example with rectangular frame below two turned finials, 8.5cm, and another ivory example with reel top, 10cm. (3)

£50-100

342

No lot

343

No lot

Needlecases, Needlebooks & Needle Packet Cases

344

A turned rosewood needlecase, the domed metal top named for "Wheeler & Wilsons Sewing Machines", internal divider lacking, 6.5cm.

£20-30

345

A collection of needlebooks and related items, including the Army & Navy Needle Book, 12cm, a floral embroidered green silk example, 9cm, a purple leather Sharps example, "The Azalea needle Case", 16cm, a recipe booklet incorporating needles, and various needle packets. (qty)

£20-40

346

Two beadwork covered needlecases, comprising; a cylinder form example with wooden core, 8.5cm, and a rectangular section example with bone core, 8.7cm, both in patterns of geometric coloured beadwork. (2) (*Betty Wolf Collection*)

£40-60

347

A rare 19th century porcelain needlecase in the form of a swaddled baby wearing a bonnet with red pillow, floral painted decoration, slight chip to nose, 7.6cm. (*Betty Wolf Collection*)

£100-200

348

A Palais Royal needlecase in mother of pearl, of rectangular form and section, gilt metal mounts, oval enamel pansy mark, joint a little loose, 8cm. (*Betty Wolf Collection*)

£50-100

349

A good 19th century ivory pea pod needlecase, 9.7cm. (*Betty Wolf Collection*)

£50-100

350

Four needlecases, comprising; a bone example as a furled umbrella with Stanhope (High Street, Oxford), 12.2cm, another, the shade stained purple, 12cm, a wooden and bone example, lacking handle, 8.7cm, and a coloured straw work example of cylinder form, s.d., 11.5cm. (4) (*Betty Wolf Collection*)

£40-60

351

A rare white glass cylinder form needlecase, brightly painted with flowers and leaves with a gold band at the divide, 9cm. (*Betty Wolf Collection*)
£40-80

352

Four needlecases, comprising; two beadwork covered examples, one of cylinder form with wooden core, the other rectangular with bone core, both in coloured geometric beadwork, 8.2cm and 8.8cm, s.d., a straw work rectangular needlecase, s.d., 8.2cm, and a silver gilt needlecase decorated with scrolling flowers, leaves and shells, 9cm. (4) (*Betty Wolf Collection*)
£50-100

353

Six children's figural painted continental wooden needlecases, including; a top hatted gentleman with string pull, 8.5cm, and five others, largest 12cm. (6) (*Diane Pelham Burn Collection*)
£40-80

354

Children's needlecases and accessories, comprising; a pair of Darby and Joan painted wooden needlecases, with original box and printed card, 7.7cm, a crochet hook in carved wood polychrome figural case, as a man in tasseled hat and jacket, 9.5cm, and a pair of wooden knitting needles. (3) (*Diane Pelham Burn Collection*)
£40-80

355

Seven needlebooks, comprising; a brass mounted velvet example, 8.5cm, a pair of mother of pearl panels engraved with flowers, lacking banding and flannel, 5cm, a green leather example mounted with a scrap, 6cm, an ivory example, disbound, 5.5cm, a hat form material example with silver thimble top, 6cm diameter, a painted blue silk example, 8cm, and an ivory example, the cover carved with flowers and leaves, 5.5cm. (7) (*Diane Pelham Burn Collection*)
£40-80

356

Seven needlebooks, comprising; a bellow form example in embroidered blue silk, 10.5cm, a floral embroidered oval ivory silk example, 8cm, another silk example mounted with a scrap, 6.2cm, a printed card example "A Merry Christmastide", 9cm, another, "A Present From Bournemouth", internal photograph, 10cm, and a small needlework example, 4.2cm, with matching pincushion. (7) (*Diane Pelham Burn Collection*)
£40-80

357

Sixteen needle and other cases, comprising; an ivory quiver form example with gilt metal pansy mark, 6.2cm, a faceted steel example, 6.7cm, two carved ivory Cantonese examples, a wooden furred umbrella, 11.5cm, and eleven others. (16) (*Diane Pelham Burn Collection*)
£40-80

358

Four cardboard advertising needle books, all of bottle form, comprising examples for Holbrook & Co., Symington's (two versions), all approximately 8.5cm, and a large example for Shieldhall Essence of Coffee, 15cm. (4) (*Diane Pelham Burn Collection*)
£30-50

359

Two leather needle packet cases, one with sloping lid titled "Needles" within a tooled panel and over a further tooled panel, red morocco sides and back, the interior with needle packets, 5cm high and another, "Patented Needle Preservers – Ask for Any Size to Refill" in tooled red morocco, 5cm x 4cm. (2) (*Eleanor Johnson Collection*)
£40-60

360

Three needle packet cases, comprising; a green leather example with a panel of gilt tooled and colour onlay decoration, 5cm, a gilt foil cardboard example for "Queen Victoria's Real Diamond ... Rich. Wyers Manufacturer, Redditch", 4.7cm, and a colour print example, the material covered lid applied with a scrap, 4.5cm. (3) (*Eleanor Johnson Collection*)
£30-50

361

A good red leather needle packet wallet, gilt tooled with colour onlays and titled "Needles", the divided interior with silk panels, 9cm x 6cm. (*Eleanor Johnson Collection*)
£40-60

362

A carved ivory needlecase, in the form of a pea pod, 9.7cm. (*Eleanor Johnson Collection*)
£40-80

363

A Palais Royal mother of pearl needlecase of rectangular form, with gilt metal ferrule and inset gold shield cartouche, 6.8cm. (*Eleanor Johnson Collection*)
£50-100

364

Two needle packet boxes, comprising; a tortoiseshell example with slant top and sides, lacking internal divisions, 4.5cm, and a burr yew wood slant top example, 5.5cm. (2) (*Eleanor Johnson Collection*)
£60-100

365

Four wooden needlecases in the form of furred umbrellas, comprising; an example with fist terminal, incorporating a Stanhope (Souvenir of Brighton, 5-views), 14.5cm, and three others, two with bone handles, largest 11cm. (4) (*Eleanor Johnson Collection*)
£50-100

366

Three unusual wooden needlecases, comprising; an example in carved boxwood as a shoe, 6.7cm, an oval section example in boxwood, sliding lid with scallop, 7.5cm, and a Spa work example "Lausanne", with painted oval landscape panel, slight losses, 7cm. (3) (*Eleanor Johnson Collection*)
£50-100

367

Three needlecases, comprising; a silver gilt example of tapering form, with line and dot engraving, 6.5cm, an ivory 'stacked brick' example, with inoperative Stanhope, 11.4cm, and a vegetable ivory example, with cut steel decoration (some lacking), 7.5cm. (3) (*Eleanor Johnson Collection*)
£40-80

368

Two carved wooden needle cases, comprising; an unusual example carved in the form of a crocodile, part of lower jaw lacking, 13cm, and a pea pod, one side with incomplete inscription, 9.5cm. (2) (*Eleanor Johnson Collection*)
£50-100

369

A good two-tone carved wooden needlecase, in the form of a huntsman's boot, gilt stud decoration to heel, some lacking, 7cm.

(Eleanor Johnson Collection)

£40-60

370

Four needlecases, comprising; a bone cylinder example surmounted by a vegetable ivory tape measure, printed tape, the spindle incorporating a Stanhope (Souvenir of Bournemouth – 14 views), 11cm, a vegetable ivory example with pierced decoration, 8.5cm, a standing rosewood example with bone top, 8cm, and a Tyrolean standing male figural example, s.d. to hat, 10cm. (4) *(Eleanor Johnson Collection)*

£40-80

371

Six needlecases, comprising; a standing carved wooden Tyrolean example, 8.5cm, three other wooden examples, including a rolling pin, a brass example, and a Mitrailieuse example, 5.8cm. (6) *(Eleanor Johnson Collection)*

£40-60

372

Seven needlecases, comprising; a rosewood cylinder example, the metal button top with sizes, "Wheeler & Wilsons Sewing Machine", 6cm, two Mitrailieuse examples, three wooden examples, one incorporating a tape measure, the bone spindle with Stanhope (Edinburgh – 6 views), 10cm, and a cardboard book example, bottle form, "Goodhall Backhouse – Yorkshire Relish", 8cm. (7) *(Eleanor Johnson Collection)*

£40-80

373

A brass needlecase, "The Christmas Needle Case/Hutton and Co., London, Patented", 4.6cm x 2.2cm. *(Eleanor Johnson Collection)*

£40-80

374

Two brass needlecases, "The Quadruple Golden Casket, C. and J. Morton, Cutlers, Cheapside, 1868", 6.8cm x 3.2cm, and another, "Beatrice", 4.8cm x 2.6cm. (2) *(Eleanor Johnson Collection)*

£40-80

375

A tortoiseshell and gilt pique needlebook, the cover initialled below a garland, interior replaced, 10cm x 6.5cm. *(Eleanor Johnson Collection)*

£40-80

376

Four needlebooks, comprising; a boxwood example with carved boss to cover inset with steel studs, 6.7cm x 3.2cm, a reverse glass example titled "Langum Fisherwomen at Tenby", mirror to reverse, 6.2cm x 3.6cm, another in wood, painted with a bird in landscape and the reverse "Nice", 7cm x 5cm, and a material needlebook in the form of a set of bellows, one side in floral beadwork, 7.2cm. (4) *(Eleanor Johnson Collection)*

£50-100

377

A mother of pearl needlebook and a pincushion, the needlebook with pierced cover of a bird amid scrolls, 5cm x 3.5cm, and a rectangular mother of pearl pincushion, one side engraved with a flower branch, 4cm x 2.6cm. (2) *(Eleanor Johnson Collection)*

£30-50

378

A gilt brass Avery needlepacket case, "Picnic Basket", Registered 04/23/1875, W. Avery and Son, 5.8cm. *(Eleanor Johnson Collection)*

£40-80

379

Two needle flannel rolls, comprising; a cylinder form silver plated example, with oval cartouche amid floral garlands, 9cm, a turned rosewood turret form example with top spindle wind, some crenellations, damaged, 7cm, and a very similar rosewood turret, the upper section fitted as a tape measure, the lower section as a pin poppet, crenellations damaged, 7cm. (3) *(Eleanor Johnson Collection)*

£30-50

380

A falling side cardboard needle packet box, with pincushion lid, the sides with colour prints of children in 18th century costume, central thimble box, 10.5cm high, and a bur walnut sarcophagus form table pincushion with Chinese silk top, on four bun feet, 12.8cm x 10.2cm x 9.5cm. (2) *(Eleanor Johnson Collection)*

£30-50

381

A comprehensive collection of paper and card needle packets, mostly variant. (qty) *(Eleanor Johnson Collection)*

£20-30

382

Two beadwork covered needlecases, one of cylinder form, one of rectangular form, both with bone bodies and decorated in coloured geometric beadwork, 9cm. (2) *(Eleanor Johnson Collection)*

£50-100

383

A tortoiseshell needlepacket case of knife box form, sloping lid with white metal plaque, bone edged interior rim, paper lining, 5cm x 3.8cm.

£40-80

384

Five needlecases, comprising; a bone example in the form of a furled umbrella with inoperative Stanhope, 12.5cm, another in wood and bone, 10cm, a bone cylinder form example with clenched fist terminal, incorporating a Stanhope (Notre Dame De Chevremer), 9.7cm, a white metal needlecase, dents, 6cm, and a white metal bodkin case of oval section with spiral decoration, 8.5cm. (5)

£50-100

385

Two 19th century large format needlecases, each in the form of a furled umbrella, comprising a carved wooden example with branch form bone handle, with elaborate knop, 15cm, and another in whitewood with mahogany handle, with a monochrome titled print "Kirchen itckenberg", 15cm. (2)

£50-100

386

Five needlecases, comprising; a tapering gilt metal example decorated with diaper filled ovals to a seal base, 6.7cm, a bone furled umbrella with fist handle terminal, 12cm, two painted wooden examples, one as an umbrella, 14cm and 10.5cm, and a white metal needlecase with chained cover, 7cm. (5)

£50-100

387

A gilt brass needle packet case, "The Quadruple Golden Casket ... W. Avery & Son ...", 7cm.

£30-50

388

A collection of card and paper children's needle books, mostly German circa 1950/1960, including one with folding 3-D picture, together with needlepackets, needle threaders, five pin tins and a glass advertising pin dish. (qty)

£20-40

389

A brass needle packet case, by W. Avery & Son, "The Quadruple Golden Castket", fleur de lys, 7cm.

£30-50

390

Five various needlecases, comprising; a turned lignum vitae example with metal button top for "Wheeler & Wilson Sewing Machines", 7cm, a barrel form whitewood example, "Magnolia Needle Case ...", 5.5cm, and three metal Mitrailleur examples. (5)

£40-60

391

Nine various needlebooks, including; The Flora MacDonald Needle Book, a French three fold card and paper example "Aiguilles Assorties – A.B. – Paris", 12.7cm, and a Holbrook & Co. sauce bottle example. (9)

£30-50

392

A falling side needle packet box, colour print side landscapes, interior with Abel Morall's packets and central thimble box with thimble, 10.25cm high.

£20-40

393

Two needle retainers, comprising a rectangular wooden example "The Hazelwood Needle Case – John Wheeler", 19.5cm, and "The Bolingbroke Needle Case" of leather wallet form, 19cm. (2)

£20-30

394

No lot

395

No lot

Shuttles

396

A good 18th century ivory shuttle, with inset engraved gold border enclosing a further border of dots, 9.8cm. (*Eleanor Johnson Collection*)

£200-400

397

Four small shuttles, comprising; a white metal example with scroll panels, stamped 'Sterling', with ring suspension to one end, 6.7cm, a mother of pearl inlaid horn example, 7.5cm, a plain ivory example, and another in mother of pearl. (4) (*Eleanor Johnson Collection*)

£60-100

398

Eight small shuttles in various materials, including bone, wood, horn and tortoiseshell, largest 9.2cm. (8) (*Eleanor Johnson Collection*)

£30-50

399

No lot

Scissors

400

A good pair of early 19th century French silver mounted scissors, steel tapering blades to elaborate silver handles, pierced and cast with harebells, leaf scrolls and leaf masks below scrolling oval loops, 17.2cm. (*Betty Wolf Collection*)

£50-100

401

Three pairs of 19th century or earlier steel scissors, Persian or Turkish, all with hollow ground blades and with pierced decoration, largest 23.5cm. (3) (*Betty Wolf Collection*)

£50-100

402

A pair of 19th century or earlier steel scissors, Persian, in the form of a long beaked standing bird and of three dimensional form, 20cm. (*Betty Wolf Collection*)

£50-100

403

Seven pairs of delicate 19th century steel scissors, including a pair with large scroll loops, 6cm, most with file cut decoration, largest 9cm. (7) (*Betty Wolf Collection*)

£40-80

404

Three pairs of late 18th/early 19th century delicate steel scissors, two pairs with file cut decoration, the other pair mounted with gold flowerheads, largest 10.5cm. (3) (*Betty Wolf Collection*)

£50-100

405

Five pairs of 19th century small steel scissors, comprising; a pair for an etui, engraved arms, 6cm, another pair, one loop s.d., 7cm, and three others, including a pair with octagonal file cut loops. (5) (*Betty Wolf Collection*)

£60-100

406

Seven pairs of 19th century small steel scissors, including a pair with unmarked silver mounts, all with decorative arms, largest 10cm. (7) (*Betty Wolf Collection*)

£50-100

407

Two pairs of Italian steel scissors, comprising; a pair with bird, leaf scroll and dolphin head, engraved and pierced loops, stamped "Italia/ Archi ...", 17cm, and a smaller pair with floral pierced and engraved arms below pierced loops, light rusting, 10.5cm. (2) (*Betty Wolf Collection*)

£40-80

408

Fourteen pairs of small steel scissors, including; manicure examples, the largest 10cm. (14) (*Betty Wolf Collection*)

£30-50

409

Three pairs of scissors, comprising; A pair of 19th century silver handled sewing scissors, with silver sheath, vine encrusted arms below oval snakehead loops, oval section steel blades, floral sheath, old repair to base of one handle, 9.5cm, and two pairs of delicate steel scissors. (3) (*Betty Wolf Collection*)

£40-80

410

A good pair of silver mounted sewing scissors, oval section tapering steel blades, the arms and loops cast as asiatic pheasants, complete with silver sheath. (*Betty Wolf Collection*)

£50-100

411

Eleven pairs of small steel scissors, including an 18th century pair, 9.5cm, a pair with silver handles, 10.5cm, and a pair cast with the American eagle, 12.5cm. (11) (*Betty Wolf Collection*)

£50-100

412

Six pairs of small shear form scissors, including a pair labelled "Hair clippers excavated near Walbrook London ... thought to be Saxon or Viking", 14cm, the others 18th/19th century, two pairs with brass springs, one of which is stamped "Coulden", 13cm or smaller. (6) *(Betty Wolf Collection)*

£50-100

413

Six pairs of 19th century small steel scissors, including a pair incorporating a button hook and shoe horn, 13cm, a pair with file cut arms and leather sheath, 12cm, a steel pair with shagreen sheath, 12cm, a steel pair with floral arms and angular loops, 19cm, and two others. (6) *(Betty Wolf Collection)*

£80-120

414

Four pairs of 19th century medium size steel scissors, comprising; a pair with file cut scroll arms, stamped "ANCS", 16.5cm, another pair stamped "Badgers Elite", 15cm, another pair "HC", 16cm, and a pair with leaf engraved arms, 14cm. (4) *(Betty Wolf Collection)*

£40-80

415

Nine pairs of 19th century small steel scissors, including two pairs with brass decorative handles, 9.5cm, the remainder all with decorative arms or loops, largest 10cm. (9) *(Betty Wolf Collection)*

£50-100

416

Three pairs of portrait medallion steel scissors, a pair stamped "Halma" with portraits of Nicholas II (1868-1916) and Alexandra, 15.5cm, another pair of the Kaiser, 18cm, and a Solingen pair for the Pope and female figure, 15cm. (3) *(Betty Wolf Collection)*

£40-80

417

Three pairs of silver handled scissors, comprising; a pair with curved tapering blades, the arms and loops with 'C' scrolls and leaves, Birmingham, 1897, by L. & S., 13.5cm, another pair with curved blades, mask decorated arms to decorative loops, 9.5cm, and another pair, 12cm. (3) *(Betty Wolf Collection)*

£40-80

418

A pair of Palais Royal scissors, 19th century, steel tapering blades to gilt floral mounts, the mother of pearl arms pierced and carved with classical style male heads below oval loops within pierced borders, chip or natural fault to one arm, 11cm. *(Betty Wolf Collection)*

£100-200

419

A pair of Palais Royal scissors, tapering steel blades, shaped mother of pearl arms with gold mounted circles below plain oval loops, one arm badly damaged to one side, 10.5cm. *(Betty Wolf Collection)*

£30-50

420

Seven pairs of small 19th century steel scissors, including a good file cut pair, 10cm, a pair with gold dots and rivet, 8.5cm, largest 11cm. (7) *(Betty Wolf Collection)*

£50-100

421

Four pairs of miniature scissors and a folding knife, comprising; a gilded stork form pair, 4cm, a brass pair, 3cm, a modern pair, 3cm, and a leather wallet titled "A Sharp Pair", containing a pair of decorative miniature silver scissors, 2.6cm, together with a folding knife, 2.5cm closed. (4) *(Betty Wolf Collection)*

£30-50

422

Six pairs of 19th century or later medium size steel scissors, including a German pair with owl arms, 15.5cm, a pair with bird arms, 18.5cm, a Spanish pair, the blades etched with flowers, 15cm, and three others. (6) *(Betty Wolf Collection)*

£30-50

423

A pair of early 20th century plated steel scissors, the arms in the form of a clock tower over oval loops, 16cm. *(Betty Wolf Collection)*

£30-50

424

Four pairs of steel scissors, comprising; an excavated pair, probably 16th century, 13cm, a Turkish pair, probably 17th century, 13.5cm, an Indo-Persian pair, 13.5cm, and a sprung pair with sheath, 12cm. (4) *(Betty Wolf Collection)*

£40-80

425

A leather cased set of three graduated scissors, by Weiss, arms and loops with planished finish, case 15.5cm. *(Betty Wolf Collection)*

£20-40

426

Twenty two pairs of scissors, including a pair with pricking wheel and seam pressers, and two pairs of Italian grape scissors, largest 24.5cm. (22) *(Betty Wolf Collection)*

£30-50

427

Ten pairs of miniature and other scissors, comprising; a gilded steel stork form pair, 4cm, another pair with gilt decorated handles, 4.2cm, a pair with gallant and lass, silver handles, 12.5cm, a pair with scrolling brass handles, 9.5cm, two pairs of folding safety scissors, one in mother of pearl, the other tortoiseshell, three other pairs of scissors and two variant steel scissors, in leather case. (10) *(Eleanor Johnson Collection)*

£50-100

428

Scissors and scissor cases: A red leather and gilt tooled triangular scissor case with two matched pairs, 18cm, another similar by Mappin & Webb, with three matched pairs of scissors, 15.5cm, a purse form scissor/thimble case with matched scissors and thimble, four pairs of scissors and a sheath. (8)

£50-100

429

A leather and brown silk scissor and reel case, of tapering form complete with steel scissors, interior with reels, pincushion, silver thimble and needle flannel, 17cm.

£30-50

430

Three pairs of scissors, comprising; a pair of folding scissors of dagger form with wire bound grip, in elaborate scabbard with chains to a military trophy hanging mount, 13cm, and two pairs of steel scissors, largest 10cm. (3)

£30-50

431
No lot

432
No lot

Chatelaines

433
A silver chatelaine, the hinged clip to a pierced mask, scroll and flower mount with three pierced chains to a matched buttonhook, a shield form floral and scroll decorated pincushion and a notelet, with monogram "M.T.", the mount Birmingham, 1897, by F. W. T. Ltd., pincushion, Birmingham, 1897, notelet Birmingham, 1896, by C.C., 33cm max. (*Eleanor Johnson Collection*)
£150-250

434
A silver chatelaine, the hinged clip to a female mask pierced mount in a pierced scroll surround with four chains to a folding knife, scent bottle, button hook and pencil, the mount, Birmingham, 1895, by H. W. A., knife, Birmingham, 1911, scent, Chester 1898, 27cm max. (*Eleanor Johnson Collection*)
£100-200

435
Two chatelaines, comprising; a steel example with star pierced clip with five chains to a needlecase, ball form tape measure, steel scissors, acorn pincushion and thimble bucket with thimble, 36cm, and a ribbon and whitework chatelaine, 26cm max. (2) (*Eleanor Johnson Collection*)
£80-120

436
A mid 19th century Dutch silver chatelaine, the clip with scroll and filigree mount to a panel of six chains to six separate chains to a silver seal, a silver thimble case with hinged cover, decorated with flowers, with thimble, a silver basket weave tapering needlecase, a silver cylinder tape measure with complete printed tape, and two matching boteh decorated silver needlecases, 24cm max.
£300-400

437
Two chatelaines, comprising; a continental example stamped "800" and "FB", pierced cherub mount to two pierced chains to a silver frame pincushion engraved and pierced with thistles and leaves, Birmingham, 1904, and a silver plated floral decorated notelet, 19.5cm max, and a silver plated chatelaine mount, elaborately pierced with a flowerhead, scrolls and birds, with five panel form chains, 21cm. (2)
£100-150

438
An elaborate silver plated chatelaine, complete with waist chain, the mount with hinged clip and pierced with Neptune amid flowers and scrolls, with three chains with animal mask links to a disc form pincushion with an Art Nouveau style maiden's profile, a mask and scroll decorated scissors case with scissors, and a mask and scroll work thimble bucket with silver thimble, 28cm max, excluding waist chain.
£100-200

439
A rare Victorian green leather, gilt tooled and gilt mounted chatelaine, the clip supporting a leather purse with five leather straps with decorative gilt buckles to a sprung notelet, a thimble bucket with brass thimble, a scissor sheath with steel scissors, a cylinder needlecase and an oval pincushion, all in mtching leather and gilt, 50cm max.
£150-200

440
A steel chatelaine, the pierced bell form mount to six chains with thimble bucket and thimble, acorn form pincushion, cylinder needlecase, swivel notelet, folding knife and seal, and a chain mail purse, 27cm.
£50-100

441
A small black leather chatelaine, open work plated mount, stamped "M.S." to hook, with three straps to a sprung notebook, a scissor sheath with steel scissors, and a purse, 29cm.
£30-50

442
No lot

443
No lot

Thimble Cases

444
Six thimble cases, comprising; a Mauchline ware (Entrance to Brighton Aquarium) thimble and reel box of rectangular form, 5.8cm, another of egg form (New Town Hall, Dover), 7cm, a pierced coquilla egg, 6cm, a velvet scallop form example, another in vegetable ivory of acorn form, 5.2cm, and a blue plastic tapering cylinder example painted with snowdrops, 3cm, each with a thimble. (6)
£50-100

445
Nine thimble cases, comprising; a brass example in the form of a spinning top, 4.2cm, a brass acorn, a gold painted walnut, an embroidered velvet slipper shoe, 5.5cm, a Gouda pottery clog, a sea grass basket and cover, a steel thimble bucket, a vegetable ivory carved example and an alabaster book form example, 5.5cm x 4.5cm, all with a thimble. (9)
£80-120

446
Three standing thimble holders, comprising; a 19th century brass example modelled as a resting male grape gatherer, on circular base, 7cm, a Swiss Black Forest standing bear, a thimble in his paws, a pincushion pannier on his back, 9.6cm, and a Tyrolean cylinder form companion containing reel, needlecase and thimble stand, 14.7cm. (3)
£60-100

447
Two mother of pearl parquetry work thimble cases, comprising a rectangular example, the canted lid edged in abalone, red velvet interior, 3.6cm, and another with dome top, 4cm. (2)
£60-100

448
Five thimble cases, comprising; three floral decorated brass examples, two of egg form, all on chains, and two vegetable ivory acorn form examples, one with needlecase and reel, 5.4cm, all with a thimble. (5)
£30-50

449
Three thimble cases with thimbles, comprising; a vegetable ivory example of acorn form, complete with original carved vegetable ivory thimble, 5cm, a seagrass basket and cover with ivory thimble, s.d., and a rosewood acorn example with period rosewood thimble, 5cm. (3)
£50-100

450

Six ivory thimble cases, some with thimbles, comprising; a pierced ivory acorn example with an ivory thimble, 5.5cm, a cylinder form example with screw cover with elegant ivory thimble, 3.5cm, another in bone with pointed end with a steel top silver thimble, a pair of cylinder form ivory screw top containers, one with oriental child's ivory thimble, 2.6cm, and an ivory egg form example, part only covered in geometric beadwork. (6)
£80-120

451

Eleven thimble retainers and boxes, comprising; three lady's shoe form examples, two in coloured glass, one in velvet, a mother of pearl egg form example, "Souvenir du Mont St. Michel", 5.2cm, a coquilla nut basket, and six others, some with thimbles. (11)
£40-80

452

Nine thimble shoes, comprising; seven variant material examples, a porcelain example, and an alabaster example "From Washington", two with thimbles, largest 8.5cm. (9) (*Diane Pelham Burn Collection*)
£40-80

453

Eleven metal thimble shoes, with variant decoration, all 20th century, with three thimbles, largest 7.5cm. (11) (*Diane Pelham Burn Collection*)
£20-40

454

Three silver thimble shoes, comprising; a Dutch clog embossed with figures and animals, 5cm, another as a lady's shoe embossed with oriental figures, import marks for London, 1900, by "J.S.", 5.5cm, and a silver slipper with engraved decoration, with a small silver thimble, 4cm. (3) (*Diane Pelham Burn Collection*)
£50-100

455

Six thimble shoes, comprising; a silver example decorated with leaf scrolls, the toe with figures, 6cm, a gilt painted gentleman's metal shoe with wire lace, 5cm, two other metal shoes, another as a boot and a painted wooden example with pin cushion, 8.5cm, with three thimbles. (6) (*Diane Pelham Burn Collection*)
£40-80

456

Nine thimble shoes, comprising; a clear glass floral painted example, 5.5cm, a pair of pin stuck material examples, 5.2cm, a leather example, 4.7cm, three material examples, one incorporating a pincushion, 7cm, a card and silver dusted example, 8cm, and a carved wooden clog example, 4cm, with three thimbles. (9) (*Diane Pelham Burn Collection*)
£40-80

457

Five thimble cases, comprising; a vegetable ivory acorn, two brass egg form examples, one with chain, a carved bog oak example, and a velvet scallop, all with a thimble, largest 4.5cm. (5) (*Eleanor Johnson Collection*)
£40-60

458

A good beadwork covered bone thimble egg, with geometric coloured beadwork, with a silver thimble, 4cm. (*Eleanor Johnson Collection*)
£40-80

459

Two novelty thimble cases, comprising; an example in the form of a lidded tankard with engraved decoration, with a cable thimble, 4cm, and a gilt brass example in the form of a chick on groundwork, 4.5cm. (2) (*Eleanor Johnson Collection*)
£40-80

460

Three thimble shoes with thimbles, comprising; a green glass example, another in purple velvet and a white porcelain example painted with a bird, each with a silver thimble, largest 6cm. (6) (*Eleanor Johnson Collection*)
£30-50

461

A rare 19th century vegetable ivory sailor's thimble case of acorn form, with rope work bands carefully scrimshawed with whales, small figures and birds in the Eskimo style, 5.5cm. (*Eleanor Johnson Collection*)
£50-100

462

Two tortoiseshell thimble boxes, one of octagonal form, 3.5cm, the other with sloping top and of tapering form, 4cm, the last with lid label "Pleasant and Harper, 41, Wine Street, Bristol". (2) (*Eleanor Johnson Collection*)
£60-100

463

Four thimble cases, comprising; a standing laburnum acorn example, 7cm, a standing rosewood vase form example, a barrel form example, 3.8cm, and a vegetable ivory and wooden acorn example, three with thimbles. (4) (*Eleanor Johnson Collection*)
£40-60

464

Two thimble cases of standing form, both egg and cup form, one in ivory and ebony with internal needlecase, and another in vegetable ivory and rosewood, internal needlecase, 6.8cm and 6cm. (2) (*Eleanor Johnson Collection*)
£30-50

465

Six thimble cases, comprising; an octagonal example in mother of pearl and abalone, 3.5cm, two mother of pearl eggs, two white metal cylinder form examples, both stamped "Sterling", and a celluloid thimble case impressed "A Present from the Crystal Palace", 3cm. (6) (*Eleanor Johnson Collection*)
£50-100

466

A Dutch or German standing thimble compendium, late 18th century, the seal base initialled below a crown and unscrewing to the tapering cylinder needlecase, the thimble top with zig-zag decoration unscrewing to reveal a double reel, the reel unscrewing to reveal a compartment, 7.4cm.
£200-300

467

No lot

468

No lot

Thimbles

469

A rare silver thimble, the frieze with a view of Balmoral, the rim inscribed "Balmoral The Queen's Highland Home", in a leather case.
£150-250

470

A Victorian gold thimble, the frosted frieze with raised flowerheads and scroll engraving, with a tablet engraved "Flossie".

£60-100

471

A Victorian gold thimble, the frosted frieze with raised Grecian key border over feather edged rim.

£60-100

472

Three silver place name thimbles, Leamington, Scarborough and Glastonbury, all by Henry Griffiths & Sons. (3)

£30-50

473

Seven silver advertising thimbles, comprising; Robinson The Jeweller, Andrews Liver Salts, Hovis Bread, James Walker The London Jeweller, Story Journal, James Walker Wishes You Luck and H. B. Peacock, Swansea. (7)

£50-100

474

A Victorian gold thimble, the frieze with chased floral decoration set with turquoise coloured stones over an undulating rim.

£50-100

475

Seven white metal thimbles, comprising; an enamel landscape decorated example with stone top, another in enamel decorated with a bird, another in floral enamel, a gilt example with floral enamel band, a Marsh Arab example, a white metal example, the frieze with alternate coloured stones, and a French style thimble with sewing scene border, modern. (7)

£80-120

476

Two silver thimbles, comprising; a Charles Horner example with pierced daisy pattern border, Chester, 1905, in fitted leather case, and an example with linked oval frieze set with blue enamel over an undulating rim, part only of maker's mark. (2)

£50-100

477

Twelve Royal Commemorative thimbles, comprising; in silver E crown R, coronation, by Henry Griffiths and Sons, Charles & Diana Westminster Abbey, Prince William of Wales, silver and enamel 90th Birthday of The Queen Mother, together with eight ceramic royal commemoratives. (12)

£50-100

478

Fifteen silver and white metal thimbles, comprising; two hallmarked examples with stone tops, three others a hallmarked cable thimble, four others including three children's, filigree thimble, a.f., and four decorative thimbles including an American example. (15)

£80-120

479

Sixteen thimbles, comprising; two 19th century ivory examples, a modern horn example, a leather cased hallmarked example, an Iles Patent Ventilated, a brass Keepsake, and nine others. (16)

£50-100

480

Twenty seven brass and similar advertising or inscribed thimbles, five with remains of colour decoration. (27)

£30-50

481

A collection of approximately 106 aluminium advertising thimbles, many with traces of painted decoration. (qty)

£50-100

482

A large quantity of plastic, aluminium, metal and ceramic thimbles, together with T.S.L. magazines and a wall hanging cabinet. (qty)

£30-50

483

Fifty one brass thimbles, comprising; six with cutters or threaders, seven children's, an inoperative Stanhope, two coloured tops, two tailor, eight excavated examples and twenty five others. (51)

£30-50

484

Seventeen thimble compendiums, mostly in metal and plastic, including a silver and red enamel example, largest 9.2cm. (17)

£40-60

485

Thirty three thimble compendiums, mostly in metal and plastic. (33)

£20-40

486

Twenty six thimbles, comprising; fifteen hallmarked silver thimbles, including two emblematic of the Birmingham and London Assay offices, nine white metal thimbles, a Dorcas, and another. (26)

£50-100

487

Three early 19th century English porcelain thimbles, comprising; a squat example painted with flowers within gilt lines, probably Worcester, a tall example with pepper pot top painted with flowers and gilt bands, and another painted with flowers and gold leaves within gilt lines. (3) (*Betty Wolf Collection*)

£100-200

488

Three late 19th/early 20th century porcelain thimbles, all with blush ivory ground, two painted with birds on branches, within gilt lines and another transfer decorated with the crest of the City of Worcester, all probably Worcester. (3) (*Betty Wolf Collection*)

£100-150

489

Three early 19th century porcelain thimbles, comprising; a floral painted example with pink rim and dot to top, possibly Berlin, a tall narrow example painted with flower sprays within gilt lines, and another painted with a bird on a flowering branch, with gilt scrolls within gilt lines, possibly Belleek. (3) (*Betty Wolf Collection*)

£100-200

490

Four enamel border thimbles, comprising; two with Dutch Delft style landscapes, another with floral border and another in silver gilt with green floral border, by James Fenton, Birmingham, 1923. (4) (*Betty Wolf Collection*)

£50-80

491

A good Palais Royal thimble of large size, in mother of pearl, the plain border between two gilt bands, 3cm. (*Betty Wolf Collection*)

£100-200

492

Seven various silver thimbles, comprising; two thimble guards both with decorative friezes, one marked "I.T." for Joseph Taylor, a Spa with raised frieze lettering "Weston Super Mare", a well decorated Indian silver thimble, with wavy rim, two steel top examples, both initialled, one s.d., a Niello decorated example and two charm thimbles. (9) *(Betty Wolf Collection)*

£50-100

493

A fine late 18th century silver filigree combination thimble, scent bottle and tape measure, the screw-off thimble with filigree body with oval cartouche, faceted clear glass scent bottle with stopper, the base section in filigree with oval cartouche and a slightly reduced printed tape, commencing at half an inch, wound from the base, 4.2cm overall, complete with red leather violin form case, 6.2cm.

£300-500

494

A gold thimble with wavy line frieze, neatly engraved to the interior "Work Today and Play Tomorrow", in a leather case inscribed "J. C. Vickery ... Regent St. W.".

£50-100

495

An attractive gold thimble, the frieze with leaf and floret engraved decoration with initialled cartouche, over a floral rim, in a red leather velvet lined case.

£60-100

496

Five Royal Commemorative silver thimbles, comprising; an example to commemorate Queen Victoria's Golden Jubilee, with chain frieze with V.R. shield, flanked by 37/97, in a glazed top rectangular box, another in silver and enamel for Queen Elizabeth II Silver Jubilee, another with portrait of H.M. The Queen and H.R.H. The Duke of Edinburgh, by Peter Swingle, another for Charles and Diana, and another for the birth of Prince William. (5)

£100-200

497

Three 19th century ivory thimbles, comprising; an example with dome top, 2.7cm, another 1.8cm, and another Chinese with scratch cut border, 2.5cm. (3)

£50-100

498

Thirteen thimbles, comprising; two English examples in fitted leather cases, a pair of unmarked thimble guards, a stone top, an open top, a Cable style, three children's thimbles, one with steel top, a German floral enamel example with stone top, a Worcester blush ivory ground porcelain thimble, painted with a robin and signed "P. Platt", unmarked, and a black mark Worcester porcelain thimble. (13)

£80-120

499

Thirty six thimbles, comprising; nine hallmarked silver examples, nineteen white metal thimbles, including two American, a modern filigree, and eight Dorcas or Pat thimbles. (36)

£80-120

500

Eleven inscribed thimbles, comprising; six silver examples: Forget Me Not, James Walker Wishes You Luck, Story Journal, Andrews Liver Salts, James Walker The London Jeweller, Hovis and five in brass: For Industry, Guttermans Sewing Silks, Regard, Health And Happiness, and Taylors Non-slip Patent. (11)

£50-100

501

A quantity of thimbles, including brass, gilt, porcelain, plastic, wood, including a large porcelain thimble "Wembley's British Empire Exhibition 1924", 4.2cm. (qty)

£20-40

502

A collection of thimbles, including steel, bi-metal, white metal, steel caps, together with children's thimbles in base metal. (qty) *Sold with a copy of a letter from Edwin F. Homes, dated 5th April 1984, relating to the 'haberdashery shop' thimbles included in the lot.*

£20-40

503

A late 17th century silver thimble, the frieze initialled "M.P." over a reeded rim, 1.7cm. *(Diane Pelham Burn Collection)*

£80-120

504

A late 17th century silver thimble, the frieze scratch engraved "M.H." between four dots to each side, between zig zag borders over a plain rim, crack to frieze, 2cm. *(Diane Pelham Burn Collection)*

£50-100

505

Three 17th and 18th century silver thimbles, comprising; a 17th century example, frieze initialled "A.H." next to an indistinct mark, top repaired, 1.6cm, another, the frieze with portrait head within scrolls and other indistinct motifs, top repaired, 1.7cm, and an 18th century thimble, initialled "M.K." over an undulating rim, 2.2cm. (3) *(Diane Pelham Burn Collection)*

£50-100

506

Two 18th century silver thimbles, comprising; a continental example initialled "E. de S." with band of leaf scrolls over an engraved frieze within raised rope borders, 2.5cm, and a another with plain top, punched sides, over a plain frieze with a punch mark of a cross within a shield, 2.4cm. (2) *(Diane Pelham Burn Collection)*

£80-120

507

Five silver thimbles, probably south American, 19th century and variously decorated, largest 2cm. (5) *(Diane Pelham Burn Collection)*

£50-100

508

Four silver thimbles, comprising; a silver thimble in the late 17th century style cast with figures over a captioned frieze, 2cm, a continental silver thimble with gold coloured heart initialled shield within a band of engraved leaves, 2.1cm, a silver thimble embossed all over with figures drinking and eating over a rope border, possibly Friesland, and a cylinder form thimble with plain bands over a leaf and arch frieze, 2.5cm. (4) *(Diane Pelham Burn Collection)*

£80-120

509

Four decorative German silver thimbles, comprising; an example set with coral coloured stones, another similar amethyst, another ruby (one stone lacking), and another with cut steel border. (4) *(Diane Pelham Burn Collection)*

£50-100

510

Twenty two white metal and silver thimbles, with decorative borders, including American and European. (22) *(Diane Pelham Burn Collection)*

£80-120

511

Thirteen enamel decorated thimbles, all 20th century. (13) (*Diane Pelham Burn Collection*)

£50-100

512

Fifty brass and other thimbles for children, late 19th/early 20th century, including a boxed set of three brass thimbles, "Faith, Hope And Charity", 4.7cm. (50) (*Diane Pelham Burn Collection*)

£40-80

513

Nine silver place name and advertising thimbles, comprising; Isle of Man, Lourdes, Erindring (with stone top), Oronsay, Tenby, Stratford-upon-Avon, Andrews Liver Salts (x2), The Lady's Friend (holed). (9) (*Diane Pelham Burn Collection*)

£50-100

514

Five 19th century silver friendship thimbles: Regard, Remember Me, Forget Me Not, From a Friend and Keepsake (miniature). (5) (*Diane Pelham Burn Collection*)

£50-100

515

Twenty four Dorcas and similar thimbles, including patented examples. (24) (*Diane Pelham Burn Collection*)

£50-100

516

Five early bronze Moorish thimbles, 15th century and later, including an open top example, and two with apex holes, largest 2.5cm. (5) (*Diane Pelham Burn Collection*)

£50-100

517

Five gilt metal or gold thimbles, comprising; an inscribed frieze "Remember Me", an early 19th century example with broad floral embossed frieze, another worn, and two American examples, one stamped "14k", largest 2.5cm. (5) (*Diane Pelham Burn Collection*)

£80-120

518

An 18th century English enamel thimble, decorated in coloured enamels with a cottage and two figures in a cartouche, on a white ground with raised dots, gilt metal rim and top, 2cm. (*Diane Pelham Burn Collection*)

£100-200

519

Twenty six silver and white metal thimbles, many with decorative borders, including American examples and children's. (26) (*Diane Pelham Burn Collection*)

£50-100

520

Three Norwegian thimbles, comprising; an enamel on copper example with blue, black and white winter landscape, a silver example, inscribed "Hedvig", and another with trellis spire engraved frieze, both with inset waffle top and marks to the internal apex, largest, 2.1cm. (3) (*Diane Pelham Burn Collection*)

£40-80

521

Two rare brass thimble gauges, one for Dorcas, of thimble form, with graduated engraved rings, from 12 to 5, engraved to the frieze "Dorcas Standard Sizes", 3.5cm, and another with maker's mark struck twice "S.F.", 3cm. (2) (*Diane Pelham Burn Collection*)

£30-50

522

Thirty six thimbles, including; a simulated tortoiseshell example with silver rim and cap, an 18th century steel thimble with frieze inscription, worn, a Prov. Pat. with cutter, a thimble on ring, and others including cloisonné, brass, plastic. (36) (*Diane Pelham Burn Collection*)

£30-50

523

Ten bronze and brass early thimbles, 17th century and later, including one with trefoil pierced top, mostly Spanish, largest 2.5cm. (10) (*Diane Pelham Burn Collection*)

£50-100

524

Sixteen small beehive form bronze and brass thimbles, excavated, 15th century, 16th century and later, largest 1.7cm. (16) (*Diane Pelham Burn Collection*)

£50-100

525

Twenty children's thimbles, in bronze and brass, 17th century and later, including excavated examples, largest 1.6cm. (20) (*Diane Pelham Burn Collection*)

£40-80

526

Fifty six brass thimbles, a few 19th century, some with decorative friezes. (56) (*Diane Pelham Burn Collection*)

£20-40

527

Ten early bronze and brass thimbles, 17th century and later, including six with circular aperture tops, largest 2.5cm. (10) (*Diane Pelham Burn Collection*)

£50-100

528

Twenty five brass thimbles, late 17th/early 18th century, most with decorative friezes and including four examples bearing a mark, largest 3cm. (25) (*Diane Pelham Burn Collection*)

£40-80

529

Twenty two brass thimbles, comprising; fourteen with cutters and threaders, and eight others. (22) (*Diane Pelham Burn Collection*)

£30-50

530

Seven thimbles in natural materials, comprising; a horn example, a yellow stained bone example, another in vegetable ivory with carved band, an ivory example, a tortoiseshell example, a blue stained bone example and another, possibly bois durci, largest 2.6cm. (7) (*Diane Pelham Burn Collection*)

£50-100

531

Seven thimbles in natural materials, comprising; an ivory example inscribed "Dorothea 1921", a marine ivory example with star top and wriggle work sides, an ivory example with indistinct French inscription, a polished stone example, two others in horn, and an early horn example with hole to rim, most 19th century. (7) (*Diane Pelham Burn Collection*)

£50-100

532

Twenty two bronze and brass thimbles, 17th century and later, largest 2.8cm. (22) (*Diane Pelham Burn Collection*)

£40-80

533
Twelve bronze thimbles, mostly of beehive form, 16th century and later, largest 2.2cm. (12) (*Diane Pelham Burn Collection*)
£40-80

534
Fourteen bronze, brass and steel thimbles, a varied selection, including two 17th century beehive examples, a weaver's ring and others, largest 2.2cm. (14) (*Diane Pelham Burn Collection*)
£50-100

535
A rare silver thimble, the frieze with a view of Brighton chain bridge, impressed to the rim "Brighton", London, 1896, by S.F. (*Eleanor Johnson Collection*)
£150-250

536
A Palais Royal style thimble in mother of pearl with plain frieze within two gilt bands, crack or natural fault. (*Eleanor Johnson Collection*)
£50-100

537
Dorcas, Dreema and related thimbles, comprising; a boxed Dreema, a boxed Dorcas, three Dreemas, a Doris, an engraved Dreema dated 1928, a Dura and ten Dorcas. (18) (*Eleanor Johnson Collection*)
£50-100

538
DTS and a Shire Publications thimble, the Shire thimble in enamel commemorating the 100,000th sale of Thimbles and Thimble Cases, by Eleanor Johnson, 8th April 1997, an enamel thimble for DTS 1997, a porcelain example, 1991, a silver example, 1985 – 1995, and another variant version. (5) (*Eleanor Johnson Collection*)
£50-100

539
Seven silver thimbles, with inscribed friezes, comprising; Minehead, St.Leonards, Birmingham, Andrews Liver Salts, Combe Martin, Southsea and Felixstowe, last with inset coloured top. (7) (*Eleanor Johnson Collection*)
£60-100

540
Twelve silver and other thimbles, comprising; a stone top with broad engraved frieze, a Norwegian blue enamel, a floral 19th century painted porcelain example, cracked, a Georgian finger guard, two miniature silver thimbles, and six other thimbles, two hallmarked. (12) (*Eleanor Johnson Collection*)
£50-100

541
Eighteen patent and other thimbles, comprising; a steel clad, a Dorcas engraved "Bonnie Mary", four Pat. and twelve others. (18) (*Eleanor Johnson Collection*)
£40-80

542
A collection of thimbles, comprising; brass advertising and inscribed examples, aluminium advertising, black mark Royal Worcester, Thimbleful measure, sundry thimbles, and a modern wall hanging thimble display cabinet, 34cm x 23cm. (qty) (*Eleanor Johnson Collection*)
£30-50

543
A Georgian silver filigree scent bottle thimble, circular screw base with blue glass tapering and faceted bottle, stopper broken in neck, the thimble with a broad band of filigree work with a vacant oval cartouche. (*Eleanor Johnson Collection*)
£150-250

544
A Dorcas black plastic thimble stop display stand, "The Dorcas Thimble", with three stepped tiers below an odeonesequ back, 11.5cm x 12cm x 8cm.
£50-80

545
A plain gold thimble, stamped "15" to frieze.
£50-100

546
A gold thimble with line and dot frieze, initialled "L.M." over foliate rim.
£50-100

547
A late 18th/early 19th century silver filigree thimble, with oval cartouche, 2.5cm.
£80-120

548
Six thimbles, comprising; a Norwegian silver gilt and enamel example, the body with blue van dykes over a white dot frieze, polished stone top, another in green enamel, and four white metal examples with stone or glass tops. (6)
£80-120

549
Nine thimbles, comprising; four enamel decorated, two with Dutch style landscapes, one floral, another in green enamel with dot trellis, and four with stone or glass tops, three continental, an English example with Irish harp and shamrock frieze, and a white metal example in leather case. (9)
£80-120

550
Eight silver and white metal thimbles, 19th century and later, including a cabochon set example, an English example with thistle frieze, another with mistletoe, and another with tassel frieze over undulating rim. (8)
£50-100

551
Ten silver and white metal thimbles, all with decorative friezes, one with glass top, two by Carol Winandy. (10)
£50-100

552
A French Lenain thimble, with monkey and cat by the stove.
£100-200

553
Two French silver thimbles, comprising; a fable thimble, the wolf in shepherd's clothing, S.E.M. mark under sleeping dog, and a Lenain thimble with monkey at the stove. (2)
£100-200

554
Ten silver and white metal thimbles, including an example with fleur de lys frieze, two niello examples, the others with decorative borders. (10)
£50-100

555

Thirteen continental white metal thimbles, all with glass or stone tops and with decorative friezes. (13)

£50-100

556

Thirteen continental white metal thimbles, all with glass or stone tops and with decorative friezes. (13)

£50-100

557

A collection of fifty six white metal and silver thimbles, various origins and decoration, together with four other thimbles, in display tray with cover. (60)

£150-250

558

A large collection of thimbles, including a tray of 64 in porcelain and glass, a tray containing thimble compendiums, ceramic and plastic thimbles, German aluminium thimbles and many others in brass, plate, cloisonné, etc., together with thimble boxes and a display stand. (qty)

£100-200

559

Fifteen various thimbles, including aluminium advertising and Stratnoid examples. (15)

£20-30

560

Two silver thimbles, comprising a Georgian tall example initialled "S.R.", 2.5cm, and a 19th century example with floral and scroll frieze encircling a vacant cartouche. (2)

£40-60

561

A George Jensen white metal Danish thimble with red stone top.

£30-50

562

No lot

Bodkins & Bodkin Cases

563

A bodkin and a ribbon threader, the brass bodkin of plain form and labelled as Tudor, 15cm, and a bronze ribbon threader, stamped "Cox", labelled as circa 1720, 9.5cm. (2) (*Betty Wolf Collection*)

£30-50

564

Two commemorative bodkins, comprising; an 18th century steel example "Qun. Caroline B. May 1768 – Married April 8th 1795", 5.8cm, and another in brass, "Victorian Born May 24th 1819, Crowned June 28th 1838", 5.7cm. (2) (*Diane Pelham Burn Collection*)

£40-80

565

Fifteen bodkins, including; a continental silver example, 5cm, a large plain silver bodkin, 12.5cm, and others in base metal, ivory and bone. (15) (*Diane Pelham Burn Collection*)

£30-50

566

An 18th century silver bodkin, initialled "I.W.", with indistinct mark, rectangular slot below an open tear drop and ear spoon, 14.5cm. (*Diane Pelham Burn Collection*)

£50-100

567

An 18th century gold bodkin, tapering curved top eye with four bosses to each side, the tapering shaft with three decorative bands, 10cm. (*Diane Pelham Burn Collection*)

£50-100

568

Five 19th century bodkins, comprising; an ivory example with four only of ten gold dots, 6cm, a horn example with white dots, 7cm, two silver bodkins, one by Samuel Pemberton, 5.5cm and 6.5cm, and another. (5) (*Diane Pelham Burn Collection*)

£40-80

569

Bodkins, tatting pin and purling pins, comprising; a floral gilt decorated tatting pin, 6.5cm, two purling pins on chains and finger rings, and fourteen various bodkins. (17) (*Eleanor Johnson Collection*)

£40-80

570

No lot

571

No lot

Lace Bobbins

572

Bone lace bobbins, inscribed with female names, comprising; Emma, Jane, Susannah, Eliza, Betsy (indistinct), Maria, Ann, Louisa, Lucy, all with spangles. (9) (*Eleanor Johnson Collection*)

£80-120

573

Bone lace bobbins, inscribed with female names, comprising; Emma, Susannah, Maria, Eliza, Betsy, Hannah, Fanny, Mary, Jane, all with spangles. (9) (*Eleanor Johnson Collection*)

£80-120

574

Bone lace bobbins, inscribed with female names, comprising; Eliza, Hannah, Eleanor, Betsy, Sally, Harriot, Mary Ann, all with spangles. (7) (*Eleanor Johnson Collection*)

£50-100

575

Bone lace bobbins, inscribed with female names, comprising; Eliza, Eleanor, Harriot, Sally, Elenor, Matilda (spiral), all with spangles. (6) (*Eleanor Johnson Collection*)

£50-100

576

Bone lace bobbins, inscribed with boys names, comprising; George, James, Thomas, John (x3), Daniel, Dan, John?, all with spangles. (9) (*Eleanor Johnson Collection*)

£50-100

577

Bone lace bobbins, inscribed: Dear John, Dear Thomy, Dear Samuel, Dear Louisa, Dear Eliza, Dear Daniel, and a spliced bone/wood example, Richard, all with spangles. (7) (*Eleanor Johnson Collection*)

£60-100

578

Bone lace bobbins, inscribed: Aunt Eliza, dear Aunt, Aunt Elina, Aunt Eliza, Be Kind (faint), Be True, Kiss Me Quick. (7) (*Eleanor Johnson Collection*)

£80-100

579

Bone and other lace bobbins, comprising; in bone – three plain, a leopard, a tiger, a wired example and a spliced example, together with a glass bobbin, a wooden lantern, another spiral inscribed Melita, and nine other wooden examples. (19) (*Eleanor Johnson Collection*)

£50-100

580

Wooden lace bobbins, comprising; forty five various examples including a miniature, approximately fifty Bucks dumps, various continental examples and others, together with a ring file titled “A Catalogue of Pillow Lace Bobbins”, typed catalogue of bobbins, inscriptions and histories inscribed to Eleanor Johnson October 1976. (qty) (*Eleanor Johnson Collection*)

£50-100

581

A good double mother and babe bone lace bobbin, the babes stained green, the turned body with coloured dots and gilt bands over beadwork inset bands, 10.5cm.

£50-100

582

A good mother and babe bone lace bobbin of ribbed tapering form, the lantern with two straight and two wavy uprights enclosing babe with spiral gilt decoration, 11cm.

£40-80

583

No lot

584

No lot

Miscellaneous - Sewing

585

A mixed lot, comprising; a Tunbridge stick ware style pincushion, four other pincushions, four wooden needlecases, Berry pins, thimble compenium, pin tin, Kays Practical Embroiderer with templates, a German pattern book and nineteen modern porcelain thimbles, by various makers, and a pewter Christmas thimble. (qty)

£30-50

586

A mixed lot, comprising; a bone lucet, 9cm, a mother of pearl engine cut waxer, 2.1cm, a pair of hoof form knitting needle protectors, steel scissors, a pair of ivory glove stretchers, various bone netting tools, together with a lady's gilt finish compact. (qty)

£30-40

587

A mixed lot, comprising; a selection of reels and threads, rug wool cutter, “The Pride Ideal Embroidery Needle”, boxed, two Capro button makers, boxed, two plastic wool ball holders, knitting needle gauges, darners, etc. (qty)

£20-40

588

A white metal toy model of a spinning wheel, moving wheel and treadle, various marks including 925 and Medusa, 5.5cm high.

£50-100

589

A Dutch white metal working model/toy of a wool winder wheel on wheel, the upstand surmounted by a figure of a bird, the rectangular base on spiral twist legs, 10.2cm.

£50-100

590

A mixed lot, comprising; two pairs of steel scissors, one pair with file cut decoration, largest 11.5cm, a mother-of-pearl 3 1/2 inch rule, a ribbon threader, a white metal needlecase, an ivory tambour hook, s.d., 12.5cm, and a carved Cantonese ivory clamp, 3.2cm. (7)

£40-80

591

Eight various waxers, comprising; three decorated disc form mother of pearl examples, largest 2cm, another in wood with floral decoration, another in bone with floral painted decoration, a wax form cylinder example with bone base and foil border, 2.5cm, a button end waxer, 2cm, and a wax block. (8) (*Diane Pelham Burn Collection*)

£50-100

592

Children's painted wooden figural sewing accessories, comprising; a pair of knitting needles with female head protectors, 26cm, a figural darning mushroom, two knitting nancys, a figural needlecase, a similar thimble case, and a set of four reels on a spike with head form ends, 11cm. (7) (*Diane Pelham Burn Collection*)

£40-80

593

A set of three ribbon threaders and two others, comprising; a set of three graduated white metal fish form examples, stamped “925 REO”, 6.7cm, a brass example and another in white metal, “Embassy Ribbon Threader”, 7cm. (5) (*Diane Pelham Burn Collection*)

£30-50

594

A mixed lot of ivory and bone sewing tools, comprising; an ivory clamp, 8.5cm, a burnt circle emery engraved to one side “Emery”, 2.5cm, a similar ivory tape measure (replacement tape), 3.8cm, two cotton barrels, a mother of pearl top reel, two shuttles, a pair of miniature ivory knitting needles, 9cm, and three other pieces. (13) (*Diane Pelham Burn Collection*)

£50-100

595

A mixed lot, comprising; four glass reels, largest 4.5cm, a pierced ivory circular box, a pair of ivory cylinder jars with painted tops, 4.5cm, a silver waxer of disc form, 2.5cm, a silver girdle form waxer, 1.7cm, two gilt brass needle packet cases, one for Avery, one for Cookson, another, Abel Morralls, a steel thimble bucket, and eight other pieces, 21cm. (21) (*Diane Pelham Burn Collection*)

£60-100

596

Seven purses, comprising; a knitted blue and red example in the form of a sock with metal clasp, 11.5cm, a rectangular metal beaded purse worked with a seated rabbit, 6cm, a drawstring purse worked with metal beads, 8cm, a small purse with clasp containing small steel scissors, etc., 6.5cm, a white metal chain purse, 7.5cm, and two floral rectangular purses, 18.5cm and 13cm, most 19th century. (7) (*Diane Pelham Burn Collection*)

£50-100

597

Four lucets, comprising; three 19th century examples, a boxwood example with handle, 13.5cm, another in bone, 8.5cm, a tortoiseshell example, 6cm, and a crude wooden example, 12cm. (4) (*Diane Pelham Burn Collection*)

£50-100

598

Children's sewing boxes and related items, comprising; a colour print rectangular box with a few tools and related items, 16.5cm, a Spa work box, 9cm, a cardboard sewing box covered in geometric coloured paper with ring handle to lid, 10cm square, with a few accessories, including a mother of pearl waxer and emery, scissors, and a small rectangular card box with miniature scissors, 5.5cm. (4) (*Diane Pelham Burn Collection*)
£40-80

599

Children's sewing pieces, comprising; a leather shoe etui, "A Present From The Crystal Palace", with a few tools, 13cm, a brass pannier with miniature accessories, 7cm, a miniature reel stand, 7cm, and a papier-mâché snuff or pin box, titled to lid "Never Be Idel", 6.2cm. (4) (*Diane Pelham Burn Collection*)
£30-50

600

A black stained ivory needle threader, the white metal plaque inscribed "J. Rodgers and Sons, Inventors – 9 to 12", 8cm. (*Eleanor Johnson Collection*)
£40-60

601

A nanny brooch, in gilt brass, the large oval stone flanked by flowerheads, complete, unmarked, 5.6cm. (*Eleanor Johnson Collection*)
£30-50

602

Two nanny brooches, each with central stone in scroll mount, both complete, one stamped "DRGM 682605", the other "GES/GESCH", both 5cm. (2) (*Eleanor Johnson Collection*)
£40-80

603

Three lucets, comprising; a bone example, another in rosewood, and one in boxwood, largest 8.5cm. (3) (*Eleanor Johnson Collection*)
£40-80

604

Two Valentine cards and a selection of Bristol card, comprising; a pressed paper three dimensional Valentine "Accept These My Sweet", Lilies of the Valley, dated 1860, 19cm x 13cm, another with painted panel of flowers, in cut and pressed paper surround, dated 1859, 17cm x 11.5cm, a Bristol card panel "Home Sweet Home", a bookmark, a pack of "Perforated Card Board For Needlework ..." and various pieces. (qty) (*Eleanor Johnson Collection*)
£30-50

605

A small 19th century needlework sampler, worked with alphabets and numerals, by Janie Tippet – Grampound, with flowers, two peacocks, stars, crosses and other motifs, glazed and framed, 23cm x 20cm. (*Eleanor Johnson Collection*)
£30-50

606

A mixed lot, comprising; three glove darners, one stamped "Sterling P and R", 11cm, two folding knives, a work box hand mirror in mahogany, 10cm, a ribbon threader stamped "Sterling", 6.8cm, three small button hooks, a silver needlecase or pencil holder, 6.5cm, and a mother of pearl gaming token. (12) (*Eleanor Johnson Collection*)
£40-60

607

A mixed lot, comprising; a bone handled crochet set with six hooks, in gilt tooled red leather rectangular case, 8cm x 2.8cm, a glass cylinder needlecase with coloured glass overlays, s.d., 9.5cm, a boxwood capstan form knitting nancy, 4.2cm, another of slender tapering form, 7cm, and a pink silk hussif. (6) (*Eleanor Johnson Collection*)
£30-50

608

Needle threaders, comprising; two 'Blindfold', 5cm, a gilt metal example marked "Patent England", a Ridgeways Tea example in cylinder case, 8.5cm, a Selfridge needle threader in original packet with relevant newspaper cutting, and a Lux advertising example, wire a.f. (qty) (*Eleanor Johnson Collection*)
£30-50

609

A mixed lot, comprising; various bone and mother of pearl handled tools, a green serpentine sewing mushroom, 8.2cm, two needle books, a floral painted mother of pearl purse, 5.5cm, a gilt metal needle or toothpick case, 7.5cm, a brass Daisy knitter, a knitting counter ring, six knitting needle gauges, five strivers, and a chain with miniature sewing clamp, scissor and thimble pedants. (qty) (*Eleanor Johnson Collection*)
£40-60

610

Beadwork purses, etc., comprising; three draw string examples all in floral pattern coloured beads, 8.5cm, 11cm and 13cm, another similar with ornate brass clasp, a green mesh miser's purse with gilt metal beads and end terminals, 21cm, two beadwork fragments, and a gilt metal chain purse, 6cm. (7) (*Eleanor Johnson Collection*)
£60-100

611

Singer Sewing Machines: The Graduated Pattern – a folding pattern for sleeves with outer cardboard case, extensively inscribed by The Graduated Pattern Company case, 25.5cm x 8.7cm, the Singer Needle Threader with instructions in branded envelope, a branded book mark, a set of cards in cardboard branded case, Costumes of all Nations, and two sheets of threading instructions. (5) (*Eleanor Johnson Collection*)
£20-30

612

A mixed lot to include vintage sewing sets, sequin evening bag, button cards, pincushions, knitting needle cylinders, hair comb, miniature doll, silks, lace wheel, WWI silk postcard, embroidered buttons, a doll in the form of Dorset Button Maker, miniature ceramics and sundries. (qty) (*Eleanor Johnson Collection*)
£30-50

613

A mixed lot, including; a leather cased etui with three mother of pearl tools, a continental knitting needle cylinder (Nelsons Monument, Trafalgar Square), 23cm, a boxed "Moore's Patent Scissors and Shears Sharpener", a silver wallet with internal printed leather calendar, and a quantity of buttons and buckles. (qty)
£30-50

614

A 19th century French miniature painting – The Spinster, depicting an 18th century French lady seated, three quarter length, holding a distaff, a table spinning wheel nearby, circular, 6.5cm, signed "N. Bessot/D. Chordin", in square wooden frame with turned circular mount, glazed, gilt brass Dore mount, 13.2cm square.)
£300-400

615

A 19th century French miniature painting – The Embroideress, depicting an 18th century lady seated half length at a needlework frame, holding a tambour hook, oval, 9cm max, signed “Bruney”, in a rectangular floral gutta percha frame, with glazed gilt Dore mount, 14.7cm x 13cm.

£300-400

616

A mid 19th century crochet set, in pink paper rectangular cardboard box, the lid with colour print of a rural scene, velvet and silk interior with gilt metal handle and six hooks, 7.3cm x 5cm.

£30-50

617

A mixed lot, comprising; bone netting needles, gauges, two bone shuttles, 7.3cm and 6cm, and a bone lucet, 9cm. (qty)

£30-50

618

A mixed lot, comprising; four small tatting shuttles in horn, tortoiseshell and bone, a Mauchline ware thimble egg (The Granville Hotel, Ramsgate), three other thimble cases, a glass thimble slipper, two others, a pair of needle flannel slippers, a beadwork mounted emery, two pairs of pincushion/thimble clogs, a shoe pincushion, a bell gauge, a “Cross Fox” needle cylinder, a pin box, s.d., with silver mount, a brooch, and a pair of modern white metal pincushions linked by a chain. (22)

£40-80

619

A mixed lot, comprising; a Chinese carved ivory cotton barrel, a set of four white metal scroll and leaf decorated tools, comprising seam knife, bodkin/earspoon, needlecase and stiletto, and three pairs of scissors, two with white metal handles, largest 10cm. (8)

£50-100

620

A mixed lot, comprising; four pairs of scissors, two of stork form, one for button holing, largest 12.5cm, a quantity of crochet hooks, stilettos, two seam knives, a quantity of wooden lace bobbins, and a bone example. (qty)

£40-80

621

A collection of continental samplers, 19th century and later, including darning, alphabetical and numerical, a white work example, open work and stitching examples, an apron with sample bands, largest 40cm square. (18)

£150-250

622

A mixed lot, comprising; a black leather hussif with ivory tools, including a glove darning, 15.5cm closed, a leather thimble/scissor case, an alternate light and dark wood knitting needle cylinder, 22cm, two similar darners and others, wooden needle cylinders, a black and gilt lacquer reel box, and other pieces, together with glove stretchers, including two in ivory. (qty)

£40-60

623

A black plastic thimble stand, “The Dorcas Thimble Stand”, with three stepped tiers, in the odeonesque style, 12cm x 11.5cm x 9cm.

£40-60

624

A mixed lot, comprising; larger format, mostly modern pincushions, various trimmings and tools. (qty)

£20-30

625

A mixed lot, comprising; a pair of mother of pearl top reel holders, pierced and carved decoration, 3cm, another smaller, a Cantonese mother of pearl snowflake silk winder, typically engraved, three folding knives with mother of pearl scales, two with silver blades, a mother of pearl handled stiletto and crochet hook, a bone stiletto, a cylinder form mother of pearl tape measures, tape within, 2.8cm, two decorative silver thimbles, nine Chinese engraved mother of pearl rectangular gaming counters, most 6cm, and five circular examples. (28)

£50-100

626

Four leather and leatherette cased sewing sets, comprising; a continental five piece set in white metal, 12cm, a leather cased example with mother of pearl handled and other tools, green velvet interior, 13cm, another with green velvet and silk interior with mother of pearl and other tools, including a silver thimble, 16.5cm, and another with ruched crimson silk interior with a selection of tools, hinge weak, 17cm. (4)

£60-100

627

A selection of reels and related items, comprising; two pairs of mother of pearl top reels, another, a similar tape measure with bone body with neat complete tape, two similar emeries, an ivory cotton barrel with Sadeli top, and a Tunbridge stickware barrel form waxer. (10)

£40-60

628

A modern haberdashery doll, the standing figure clutching reels, buttons, etc., 35cm.

£20-30

629

A rectangular leatherette sewing companion, containing miscellaneous tools and a selection of needle packets.

£10-20

630

A double ended turned ivory needle threader, with white metal insets indistinctly inscribed with maker's details, 8.4cm.

£40-60

631

An American white metal 3-inch hem measure, stamped “Sterling-5 Pat. Oct 2 94”, scroll decorated terminal to pointer band, 12cm.

£40-60

632

A mixed lot, comprising; an ivory Cantonese cotton barrel, an ivory tape measure of shallow circular form, tape replaced, a bone shuttle, a brass and velvet watch case, a thimble case, a pair of turned ivory knitting needle protectors, a mother of pearl circular waxer, a red stained bone umbrella form needlecase, a wire bound bone stiletto, and a steel clamp, the curved frame with hook top, 7cm. (9)

£50-100

633

A mixed lot, comprising; seven wooden lace bobbins, sundry thimbles, small shuttle, ivory glove stretchers, crochet hooks, lace prickings, bone measures, Marvel Darning, “Taoro Teneriffe Lace Cushion” in original cylinder box, point art embroidery needle, a standing multiple ivory reel lacking base, sundry buttons, etc. (qty)

£30-50

634
No lot

635
No lot

Display Cabinets

636
An advertising counter cabinet for "Clark's Anchor Stranded Cotton for Embroidery", glazed top, with trade mark and ivory plaque "Fast Colours", four cantilever trays over a base drawer, 57cm x 20.5cm x 16cm.
£40-80

637
A set of mahogany advertising counter display drawers for W. Hall & Co., comprising four compartmentalised drawers, titled for Needles, Crochet Hooks and Knitting Pins, in gold on inset blue glass panels, 35cm x 28cm x 29.5cm.
£40-80

638
Display cabinets and shelves, comprising; a large printers tray, 82cm x 36cm, two smaller examples, a Perspex cabinet suitable for thimbles, 32cm square and two small box form display cases, 19cm x 12cm and 16cm x 12cm. (6) (*Diane Pelham Burn Collection*)
£20-40

639
A good quality purpose built wall mounting display cabinet for sewing tools, in black finish oak with single glazed door with fully adjustable glass shelves, 90cm x 64cm x 9cm. (*Diane Pelham Burn Collection*)
£40-80

640
A Flora MacDonald needle packet display cabinet, for a shop counter, three hinged and glazed fall front compartments with advertising transfer above and below, complete with a selection of packets, the back with hinged storage container, 32cm x 21cm x 24cm, together with an Abell Morrall's Flora MacDonald advertising mirror, 28cm x 18.5cm. (2) (*Eleanor Johnson Collection*)
£40-80

641
A 2-drawer counter display case for Millward's Needles, the compartmentalised drawers now containing a selection of haberdashery, etc., 41cm x 28cm x 19cm. (*Eleanor Johnson Collection*)
£40-60

642
A mahogany two drawer counter display cabinet for "J. and P. Coats, Sewing Cotton", 47cm x 32cm, and a wooden and plastic counter display drum for Coats sewing cottons, 17cm diameter. (2) (*Eleanor Johnson Collection*)
£50-80

643
Two display cabinets, comprising; an oak glazed door example for "Cash's Washing Ribbons" with three internal shelves and twelve pigeon holes, 65cm x 41.5cm x 17cm, and a modern pine cupboard with hinged glazed door, 43cm x 63cm x 15.5cm. (2) (*Eleanor Johnson Collection*)
£50-100

644
A mahogany glazed counter cabinet, internally etched to the sides "Rountrees", two internal glass shelves, sliding doors, 60cm x 36cm x 39cm. (*Eleanor Johnson Collection*)
£100-150

645
A useful rectangular glass display case, mirror back with twin Perspex shelves, on turned supports, 92.5cm x 21cm x 34cm.
£30-50

646
No lot

Miscellaneous - Non Sewing

647
Two bone Stanhope dip pens, one in combination with a paperknife, the latter with Stanhope (Paris Exposition 1900), 23.5cm, the other with identical Stanhope, latter lacking screw cover. (2)
£20-40

648
Miniature items, comprising' a pair of steel scissors with gilded handles, 2.3cm, a similar folding knife with mother of pearl scales, 2.2cm, a 9ct gold hand mirror, 2.6cm, a silver hand mirror, 7cm, another in silver and enamel, 7.4cm, a pair of leather gloves, 10.5cm, an ostrich feather fan, another fan, a miniature envelope to "T. Thomas, No. 1 Nursery Place, The Hermitage, Tonbridge", containing two miniature letters, one dated March 1877. (qty)
£40-80

649
Miniature pieces, comprising; eight single blade folding knives, smallest 3cm, in bone, ivory, mother of pearl, tortoiseshell, etc., three porcelain dolls, two spoons, a comb, a magnifying glass, a charm of scissors, thimble and knife, four button hooks, largest 5.5cm, a tin cash box with coins, 5cm, and a cardboard button box, 5cm. (22) (*Diane Pelham Burn Collection*)
£40-80

650
Four pomanders, comprising; a boxwood circular example, 3.5cm, another in boxwood of disc form, with inset steel dot border, 3.7cm, a coquilla carved circular example with screw-off cover, 3.2cm, and a yew wood egg form example, 3.8cm. (4) (*Eleanor Johnson Collection*)
£40-80

651
Five silver napkin clips, including; an engraved vase form example, Birmingham, 1913, 2.5cm, another engraved with flowers and leaves, Birmingham, 1907, 4cm, a plain shield form example, Birmingham, 1912, 2.5cm, a leaf scroll engraved example, Birmingham, 1928, 2.8cm, and another, Birmingham, 1907, 3cm. (5) (*Eleanor Johnson Collection*)
£40-80

652
Six silver napkin clips, all of collar and shaft form, comprising a disc example, engraved 1924 with thistle terminal, Birmingham, 1924, 4cm, another with engraved decoration, London, 1907, 2.8cm, another floral engraved, Birmingham, 1924, 3.5cm, another with scallop shell terminal, import marks, 5cm, another with cast thistle terminal, London, 1909, 4.5cm, and another with safety pin terminal, Birmingham, 1910, 4cm. (6) (*Eleanor Johnson Collection*)
£50-100

653

Five various napkin clips, comprising; a floral engraved silver openwork example, Birmingham, 1904, 5.5cm, a shield mount silver example, Birmingham, 1904, 3.6cm, a silver spring clip example with engraved decoration, Birmingham, 1891, Rd No 176704, 4cm, a white metal floral and leaf scroll clip example on chain, 4cm, and a floral enamelled gilt metal example with pin mount, 3.5cm. (5) (*Eleanor Johnson Collection*)
£50-100

654

Two skirt lifters, comprising; a scissor action example with butterfly slide, "Registered Sept. 21st 1876", 14cm, and another nickel plated marked "Walton and Shaw's Patent" with M.S. monogram, 12.5cm. (2) (*Eleanor Johnson Collection*)
£50-100

655

Three skirt lifters, comprising; a brass example with rose mount, stamped "Soley's Patent", 14cm, another scissor form example with scallop shell slider, unmarked, 13.5cm, and a nickel plated example, stamped "Despose", on ribbon and chatelaine style hook, 17.5cm. (3) (*Eleanor Johnson Collection*)
£50-100

656

A mixed lot, comprising; an unmarked silver tongue scraper on bone handle, 10.5cm, a silver sugar shovel, Birmingham, 1894, a silver handled shoe horn, a pair of glove stretchers, a filigree white metal miniature slipper, 7cm, a brass seal, sundry wax seals, and a packet of "Glovers Court Plasters". (qty) (*Eleanor Johnson Collection*)
£30-50

657

Felix The Cat: Thirty six original postcards featuring Felix, all but one in colour, thirty two contained in an album, most 14cm x 9cm. (36) (*Eleanor Johnson Collection*)
£150-250

658

Felix The Cat: Related material, comprising; a compact case, "Felix Kept On Walking", 8cm, a red plastic bookmark with plated mount and chain to an enamel Felix, stamped "Sterling Prov. Lt." and to the reverse of Felix "Pathe Presents Felix The Cat", 12.5cm, a large wooden cross form wool winder "Felix Keeps On Knitting", 16.5cm, two enamel Felix pin brooches, and two small printed panels the text in reverse, 4.5cm x 3.4cm. (qty) (*Eleanor Johnson Collection*)
£40-80

659

A rare 19th century wooden purse mould, 'Moule Turc', the rim with an outer ring of bone pegs and inner row of brass pegs, 7.5cm diameter, 8cm high. See *Sylvia Groves: The History of Needlework Tools & Accessories, Plate 170.*
£50-100

660

A mixed lot, comprising; a continental white metal Art Nouveau notebook cover with pencil, 7.5cm, a white metal chain mesh purse, 7cm, an agate fob, a plated notelet on brooch mount, ten mother of pearl gaming counters, and a tortoiseshell snuff box, s.d., 6cm. (15)
£50-80

661

A quantity of button hooks, comprising; four folding loop examples, two silver mounted, and four others, one with stone mounted thistle finial, largest 17.5cm. (10)
£20-40

662

No lot

663

No lot

Hair Combs & Accessories

664

A very large mid 19th century Cantonese tortoiseshell hair comb, for the European market, 21 points below a pierced and carved panel of flowers and leaves, 17.5cm x 18cm. (*Betty Wolf Collection*)
£50-100

665

An early 20th century tortoiseshell hair comb with plique a jour panel, 6 only of 7 points below a panel of flowers and leaves, in white metal frame, 14.5cm x 7cm. (*Betty Wolf Collection*)
£50-100

666

Two early 20th century tortoiseshell hair combs, comprising; a 3 point example with pierced and carved decoration, with a 9ct gold mount set with five amethyst coloured stones, maker's mark "B.H.J.", 17cm x 10.2cm, and a 3 prong example below a white metal pierced panel of scrolling flowers, 11cm x 5.5cm. (2) (*Betty Wolf Collection*)
£50-100

667

A good early 19th century tortoiseshell and pique work hair comb, 7 points below a carved panel centred by a silver pique panel of a jardinière of flowers, 14.5cm x 11.5cm. (*Betty Wolf Collection*)
£50-100

668

A fine 19th century Indian ivory rectangular comb, double sided with a comb to each long edge, divided by a pierced and carved panel of two female dancers with polychrome decoration within a carved rectangular diaper work frame, 10.2cm x 11cm. (*Betty Wolf Collection*)
£200-400

669

A rare late 18th century iron comb, below a panel pierced "Napper Tandy", some rusting and a few points short, 11cm x 3.5cm. (*Tandy, James Napper 1740-1803 – United Irishman born in Dublin*) (*Betty Wolf Collection*)
£100-200

670

An early 19th century tortoiseshell hair comb, probably Canton for the European market, 7 points below an elaborate pierced and carved panel of stylised clouds below feathers and shells, 21cm x 12.5cm. (*Betty Wolf Collection*)
£50-100

671

Three late 19th century Japanese lacquered combs, all of arched form, comprising a tortoiseshell or horn example, with raised gold and other lacquer flowers and motifs, 11.2cm x 5.5cm, another in gold lacquer, one side with a raised twin horned devil head, the other with two male faces, 12cm x 8cm, and another in black and gold lacquer with landscape panels and inscriptions, 11.2cm x 6cm. (3) (*Betty Wolf Collection*)
£100-200

672

Three late 19th century Japanese lacquer and other combs, all of arched form, comprising; a tortoiseshell example, inlaid with mother of pearl flowers, 8.7cm x 4cm, an ivory example overlaid with gold lacquer with two ducks and leaves, teeth repaired at ends, 10.5cm x 3.8cm, and a tortoiseshell example lacquered with gold cranes amid stylised clouds and water plants, 11.5cm x 3.5cm. (3) (*Betty Wolf Collection*)
£80-120

673

A silver hair comb, late 18th century, unmarked, 8 points below a curved panel engraved with a basket of flowers, possibly American, 8.5cm x 10cm. (*Betty Wolf Collection*)
£50-100

674

Five cut steel mounted hair combs, all in tortoiseshell, comprising; a 7 point example with three cut steel circular panels below three stars, 9.5cm, another with crown form mount, 6.5cm, a twin prong pair with hinged pins below arched cut steel mounts, 14cm, and a twin prong example bound with steel beads, 12cm. (5) (*Betty Wolf Collection*)
£50-100

675

A cut steel mounted tortoiseshell hair comb, 7 points below a hinged panel of cut steel flowerhead and leaf sprays, 9.5cm, in a fitted oval leather case titled "Pearce, 77 Cornhill", together with a pair of cut steel 'en tremblent' hair ornaments, 11cm. (3) (*Betty Wolf Collection*)
£40-80

676

Three late 19th century Japanese lacquer decorated hair winding pins, comprising; an ivory example decorated in gold lacquer with trailing blossom branches, 18cm, a black lacquer two piece example decorated in gold, signed, 12.5cm, and a similar example in gold lacquer with raised flowers and leaves, 15.5cm. (3) (*Betty Wolf Collection*)
£50-100

677

Six Japanese hair winding pins, comprising; a tortoiseshell example, 17.5cm, a waisted grey lacquer example with gold ends with raised lacquer decoration of a bird and bamboo leaves, 14cm, another similar, 11.5cm, and three others, one mounted with polished stones. (6) (*Betty Wolf Collection*)
£50-100

678

Seven tortoiseshell and horn hair combs, comprising; a tortoiseshell pair with floral and leaf engraved gold mounts, 9cm, a pair in horn with steel mounts set with paste, 6cm, a 4 prong example with hinged silver filigree mount, 8cm, a 2 prong example with gilt scroll mount, 10cm, and a small Napoleonic gilt on copper example with decorative frieze, 3.5cm. (7) (*Betty Wolf Collection*)
£50-100

679

A gold hair comb and two silver examples, the first in 9ct gold with 2 prongs below a pierced scroll mount, 12.5cm, and two silver examples, Birmingham, 1908, by G.A.S., 10cm, and a 3 prong examples, pierced and engraved, Chester, 1907, 9cm. (3) (*Betty Wolf Collection*)
£50-100

680

Three early 19th century ivory combs, probably Indian, comprising; a 21cm example, one tooth lacking, below an elaborate pierced frieze incorporating birds and flowers, another similar, 16cm, and another similar with handle, one tooth lacking, 14.5cm. (3) (*Betty Wolf Collection*)
£100-150

681

Three combs, comprising; a Chinese arched top example in tortoiseshell carved with flowers and leaves, 10cm, another inlaid with mother of pearl, 9.2cm, and a 19th century white metal 'H' comb, engraved with leaves, 7.5cm. (3) (*Betty Wolf Collection*)
£40-80

682

Three 19th century metal and stone mounted silk route wooden combs, comprising; a double comb, Bukhara, 11.5cm, another Kazakhstan, in engraved silver with lapis lazuli and other stones, 8.6cm, and another, E. Pakistan, mounted in gilt metal with stones, 9.7cm. (3) (*Betty Wolf Collection*)
£40-80

683

A 19th century Chinese silver comb, the arch with floral decoration, with three removable symbolic pins in the form of fish, umbrella and pomegranate, 9.5cm x 8cm max. (*Betty Wolf Collection*)
£40-60

684

Four Chinese silver hair pins, comprising; a pair with carved stone bird finials with enamelled leaf decoration and chained droppers, 18.5cm, and two others similar, one mounted with coral sprigs, 24cm. (4) (*Betty Wolf Collection*)
£40-80

685

Two large 19th century tortoiseshell hair combs, comprising; a Cantonese example, fourteen points below an arch carved and pierced with figures and pavilions, 11cm x 7.5cm, and another, 5 pins, carved with Prince of Wales feathers amid leaves, 19cm x 11cm. (2) (*Betty Wolf Collection*)
£50-100

686

Twelve hair combs in tortoiseshell or simulated tortoiseshell, largest 20cm. (12) (*Betty Wolf Collection*)
£40-80

687

Three combs, comprising; a bronze double comb labelled "13/14th century medieval – From a Bristol Collection", 6.6cm, a wooden double comb with gilt lacquer decoration, probably Indo-Persian, 8.5cm, and a 19th century French horn comb, pivoting into a pressed case decorated with flowers in a basket, 8cm closed. (3) (*Betty Wolf Collection*)
£50-100

688

Eight various hair combs, including an ivory pair inset simulated tortoiseshell and six others, one set with paste, one a.f., largest 16cm. (8) (*Betty Wolf Collection*)
£40-80

The Eleanor Johnson Collection of Bookmarks

689

Six bookmarks, comprising; a marbled plastic example with white metal Mr. Punch finial, another similar surmounted by a cockerel, two trowel form examples with agate handles, a plated example with stag head terminal, and a modern example with owl finial, largest 11.2cm. (6) (*Eleanor Johnson Collection*)
£50-100

690

Five gilt brass bookmarks, comprising; a dagger form example with cobweb finial and agate mounted spider, another with owl in top hat finial (one eye lacking), another with twin aperture photograph frame terminal, and two trowel form examples, one with agate handle, stamped DRGMS, largest 11.5cm. (5) (*Eleanor Johnson Collection*)
£40-80

691

Eight various bookmarks, comprising; three wooden examples, a shoe, an owl, a floral example, a metal trowel example with agate handle, a bone example with floral painted and carved terminal, two plastic examples, one a Royal commemorative, the other with peacock terminal, and a brass and enamel example with enamelled thistle terminal, largest 13cm. (8) (*Eleanor Johnson Collection*)
£40-60

692

Four bookmarks, comprising; two plated dagger form examples one with jet handle, one in polished, fossilised wood, a trowel form example with engraved blade, and a sabre form example with agate handle, largest 10.5cm. (4) (*Eleanor Johnson Collection*)
£40-60

693

Six bookmarks, comprising; five in gilt brass, four of dagger form, comprising a hinged terminal example mounted with a chick with inset amethyst coloured stone, another with an owl wearing a top hat, another with a duck head, the open beak with agate ball, another, the scroll mount incorporating a pencil, a trowel form example, the ornate handle with Stanhope (Memory of Weymouth 6-view), and a plated trowel form example with crystalline handle, largest 13.5cm. (6) (*Eleanor Johnson Collection*)
£50-100

694

Six bookmarks, comprising; four in gilt brass, one with circular frame finial inset with portrait of a gentleman, another with oak leaf below agate acorn, another with Italian micro-mosaic glass handle, another below the scroll letter 'E' and two plated examples, comprising; a trowel form example with agate handle and a dagger example with bird claw terminal clutching an agate ball, inscribed "Trimmelback", largest 12.5cm. (6) (*Eleanor Johnson Collection*)
£50-100

695

Four bookmarks in mother of pearl, comprising; a Palais Royal example with pierced and carved poodle finial, another with engraved silver mount, a floral painted example, inscribed "Spa", and a curved example with a ribbon to a carved mother-of-pearl bird, largest, 17cm. (4) (*Eleanor Johnson Collection*)
£50-100

696

Five silver plated bookmarks, comprising; three trowel form examples, two with agate handles, one with "Whitby" jet handle, a dagger form example with agate handle, and a sabre form example with polished stone handle, largest 10.5cm. (5) (*Eleanor Johnson Collection*)
£50-100

697

Seven various bookmarks, comprising; a Tartan ware (M'pherson), a Mauchline ware example (Convalescent Home, Eastbourne), a tortoiseshell example with silver mount and enamelled kingfisher, Birmingham, 1924, by G. W. L. & Co., an ivory example with floral guilloche panel, a white metal example, possibly as a cricket bat with green agate handle, a trowel form example with agate handle, and an ivory example for Mudies Bookselling Department, largest 13cm. (7) (*Eleanor Johnson Collection*)
£50-100

698

Five silver plated bookmarks, comprising; two trowel form examples one with engraved blade, the other inscribed "A. Fowler", two dagger form examples one with bird claw finial clasping a green stone thistle, the other with an agate handle, and a sabre form example with agate handle, largest 11.5cm. (5) (*Eleanor Johnson Collection*)
£50-100

699

Four silver bookmarks, comprising; three dagger form examples one with Peter Rabbit terminal, stamped "925", two dagger form examples, one with scrolling quillons, by M. Bros., marks worn, the other with green stone handle, Birmingham, 1917, by A. L. Ltd., and a trowel form example with mother of pearl handle, Birmingham, 1901, by W. H. L., largest 10.5cm. (4) (*Eleanor Johnson Collection*)
£80-120

700

Five silver bookmarks, comprising; four dagger form examples, one with mother of pearl handle, Birmingham, 1922, by A. L. Ltd., one with hand and harp terminal lacking three inset stones, Birmingham, 1924, one with crystalline handle, Birmingham, 1908 by C. and N., one with horn handle, Chester 1924, by C.H., and a trowel form example with mother of pearl handle, Glasgow, 1928, by W. H. C., largest 11cm. (5) (*Eleanor Johnson Collection*)
£80-120

701

Three silver bookmarks, comprising; a dagger form example with owl terminal, Glasgow, 1930, by W. H. C., another with scroll 'E' terminal, London, 1898, by H.B.A., and trowel form example, commemorating the coronation of Edward VII, Birmingham, 1901, maker's mark indistinct, largest 8.4cm. (3) (*Eleanor Johnson Collection*)
£50-100

702

Four white metal and silver bookmarks, comprising; an engraved silver example as a seated dog, Birmingham, 1994, F.G.H., a dagger form example with rose terminal, London, 1988, by J.R., a fleur de lys form example, and a heart form example, largest 6.2cm. (4) (*Eleanor Johnson Collection*)
£30-50

703

Four silver bookmarks, comprising; three dagger form examples, one with amethyst coloured thistle finial, one engraved to one side and with tooth form terminal, Birmingham, 1894, by G. E. W., one with red handle, Chester, 1911, by C.H. and a trowel form example, the handle with inset stones, Birmingham, 1901, by C. and N., largest 10.5cm. (4) (*Eleanor Johnson Collection*)
£50-100

704

Four silver bookmarks, comprising; two dagger form examples, one with badge of Kings Royal Rifles, Sheffield, 1894, by F. J. R., one with leaf scroll quillons, agate handle, blade engraved with the initial "G" below a shamrock, Birmingham, 1894, by A. L. Ltd., a trowel form example, Birmingham, 1903, maker's mark indistinct, and a tapering example, the terminal depicting St. Barth'lem's Gate, Birmingham, 1930, by H.H.P., largest 10.4cm. (4) (*Eleanor Johnson Collection*)
£80-120

Absentee Bidding Form

Paddle number

--

This sale will be conducted in accordance with our Conditions of Sale and bidding and buying at the sale will be regulated by those Conditions. You should read those Conditions which set out the charges payable by you on the purchases you make and other terms relating to bidding and buying at the sale. Please ask any questions you have about the Conditions before signing this form.

Please provide details of the lots on which you wish to place bids at least 24 hours prior to the sale. Bids will be rounded down to the nearest increment. New bidders must also provide proof of identity when submitting bids. Failure to do this may result in your bids not being processed. Bleasdales Limited will endeavour to execute these bids on your behalf but will not be liable for any errors.

If posting this form please contact us to ensure we have received it prior to the Sale date.

[illegible]

The Summer Sewing Sale		Sale date: 16 July 2014	
Sale no: J2014		Sale venue: Lord Leycester	
Title			
Last name and initials			
Company name			
Address			
City		County	
Postcode		Country	
Telephone daytime			
Telephone evening			
Telephone mobile			
Fax			
Email			
Are you acting as a private <input type="checkbox"/> or a trade <input type="checkbox"/> buyer?			

BY SIGNING THIS FORM YOU AGREE THAT YOU ARE BOUND BY AND UNDERSTAND OUR CONDITIONS OF SALE. THIS AFFECTS YOUR LEGAL RIGHTS.

Your signature	Date July 2014
----------------	-----------------------

FOR OFFICE USE ONLY

Identification seen: Driving Licence ☐ Passport ☐ C/C ☐ Other _____ Date _____ Time _____ Taken by _____

Surname & Initials

Paddle number

--

[illegible]

BY SIGNING THIS FORM YOU AGREE THAT YOU ARE BOUND BY AND UNDERSTAND OUR CONDITIONS OF SALE. THIS AFFECTS YOUR LEGAL RIGHTS.

Your signature

Date **July 2014**

FOR OFFICE USE ONLY

Identification seen: Driving Licence ☐ Passport ☐ C/C ☐ Other _____ Date _____ Time _____ Taken by _____



83



89



97



98



101



105



106



107



108



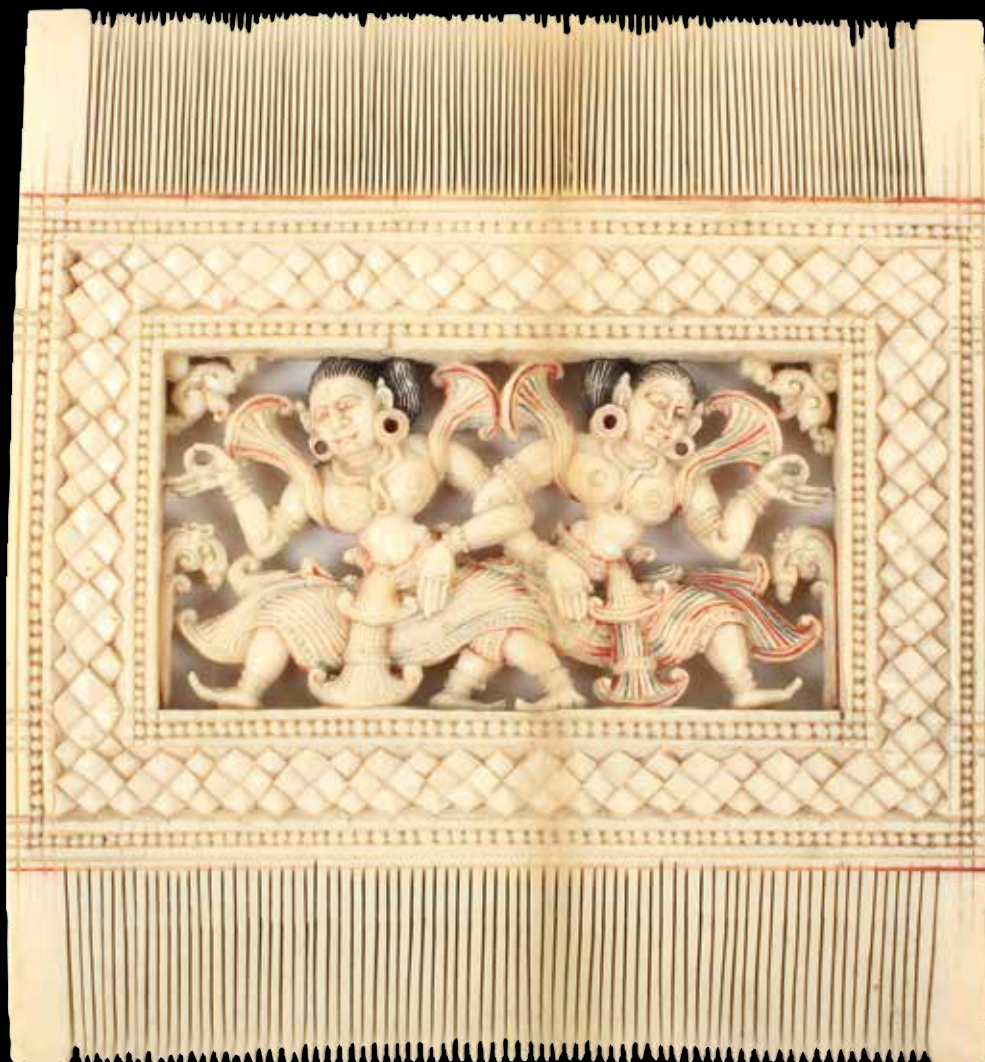
111



114



122



Sale Venue: The Great Hall, The Lord Leycester Hospital,
Westgate, High Street, Warwick, CV34 4BH, England

Bleasdales Ltd.
The Stables, 15 Imogen Gardens, Warwick, CV34 6FB, England
t: +44 (0) 7983 304880
rvb@bleasdalesltd.co.uk