

BLEASDALES

Limited

The Winter Sewing Sale
Incorporating Tunbridge Ware

Including Part I from the Collections of the late
Diane Pelham Burn and Betty Wolf

Warwick, CV34 4BH, England
Wednesday 4 December 2013





59



8



61



62



30



23



30



27



34



3



35

The Winter Sewing Sale

incorporating Tunbridge Ware

Wednesday 4 December 2013 at 11am

The Great Hall, The Medieval Lord Leycester Hospital
Westgate, High Street, Warwick, England CV34 4BH

Sale Venue

The Lord Leycester Hospital
Warwick CV34 4BH
England

Contacts for use in emergency only please:
tel. 01926 491422
email lordleycester@btinternet.com

Viewing

Sunday 1 December 10am to 4pm
Monday 2 December 10am to 4pm
Tuesday 3 December 10am to 4pm
Wednesday 4 December 9am to 11am

Restricted viewing after commencement of sale.

Sale enquiries

Prior to view and sale
R.V. Bleasdale 07983 304880

View days

R.V. Bleasdale 07983 304880

Sale days

R.V. Bleasdale 07983 304880

email

rvb@bleasdalesltd.co.uk

Updated sale information and results

www.sewingsales.co.uk

Catalogue: £10 or £12 inc. postage

Collection

Purchases may be collected from the Lord Leycester up to 12 noon on Thursday 5 December 2013, thereafter please contact us on 07983 304880 to make collection/delivery arrangements.

We consider posting items to clients as part of our service and do so at cost.

Our packing is robust rather than pretty and we may use recycled material to protect your items.

Admission

Admission to our view is free, your catalogue also allows two people entrance to the historic medieval Hospital – Sunday 10am–4pm, Tuesday and Wednesday 10am–4pm.

Please note the hospital is closed on Mondays with the exception of our sale view.

Press and Marketing

Chantal Haddon
01728 860924 or
07501 116934
chantal.haddon@virgin.net

Conditions of Sale

Our Conditions of Sale, under which this sale is conducted, are available via our website www.sewingsales.co.uk or on request. Our conditions are based upon recommended Conditions of Sale approved by The Society of Fine Art Auctioneers and The Royal Institute of Chartered Surveyors. Your special attention is drawn to conditions relating to online bidding via the-saleroom.com

Front Cover Illustrations:

Top: Lots 87, 137
Centre: Lots 450, 4, 36
Bottom: Lots 151, 29, 36
Back Cover Illustration: Lot 268

Our Summer Sewing Sale will be held in July 2014 and will include

Part 2 of the collections of the late Diane Pelham Burn and Betty Wolf

Closing date for entries June 2014

the-saleroom.com

At the Auction

Registering, Paddle Number and the Buyers Premium

If you are coming to the sale we will ask you to register so that we can provide you with your own paddle or bidding number.

All we will need to register you, are your name, address and contact details, a proof of identity, such as a driving license or passport. You only need to register once with us and we will keep your details securely for future sales.

If you bid in the sale and are successful you will pay the hammer price plus a premium of 20% of the hammer price.

Please note that any lots purchased via the-saleroom.com live auction service will be subject to an additional 3% commission charge on the hammer price.

Once you have paid you are able to collect your lots. For delicate items we are happy to supply additional packing materials free of charge.

What happens if you can't attend the auction?

Our printed catalogues provide comprehensive information about all the lots included in the sale as well as illustrations and guide estimates. Once you have decided which lots you are interested in you can then contact us to get further information about the condition of an individual item or to place your bid.

View online

Every lot in our sale will be published online with full catalogue details and a colour image. You can view all our sales online at www.sewingsales.co.uk or via the-saleroom.com

Absentee bids

If you can't come to the sale one way to bid is by completing an absentee bid form prior to the sale.

Once again you will need to register your details, name, address and contact number.

We may contact you to check your identity.

Tell us which lots you are interested in and the maximum bid you wish to leave. Please remember that there will be an additional buyers premium charge on top of your maximum bid, which is 20% of the hammer price.

You can return your signed form (see back of catalogue) by post or email. If you are successful we will let you know within 48 hours.

Once you have paid the hammer price plus buyers premium of 20%, you can collect your items from us or for an additional fee we can arrange to post or courier them to you.

Telephone bids and Client Services

Unlike many other auctioneers we are happy to accept telephone bids on any items, we will not impose minimum lot values. To make sure that the auction runs smoothly we do have flexible restrictions on the number of items clients can bid on by phone.

To ensure that we provide an efficient telephone bidding service we ask you to contact us 24 hours in advance of the sale if you want to bid by phone.

We will need you to provide us with both a landline and mobile phone line number.

We will contact you during the sale, a few minutes before the lot you wish to bid on goes under the hammer.

If you are the successful bidder you will know immediately.

Payment

At present we are only able to accept payment by cheque, cash or bank transfer. We are not able to accept payment in excess of £5000 in cash per sale in order to satisfy current legislation.

We do not accept payment by credit or debit cards.

Our Bankers

Lloyds, Leamington Spa
Sort code: 30-94-93
Account no: 00302603
IBAN: GB24 LOYD 3094 9300 3026 03
BIC: LOYDGB21137

Online Bidding

Bleasdales Ltd offer an online bidding service via the-saleroom.com for bidders who cannot attend the sale. In completing the bidder registration on www.the-saleroom.com and providing your credit card details and unless alternative arrangements are agreed with Bleasdales Ltd:

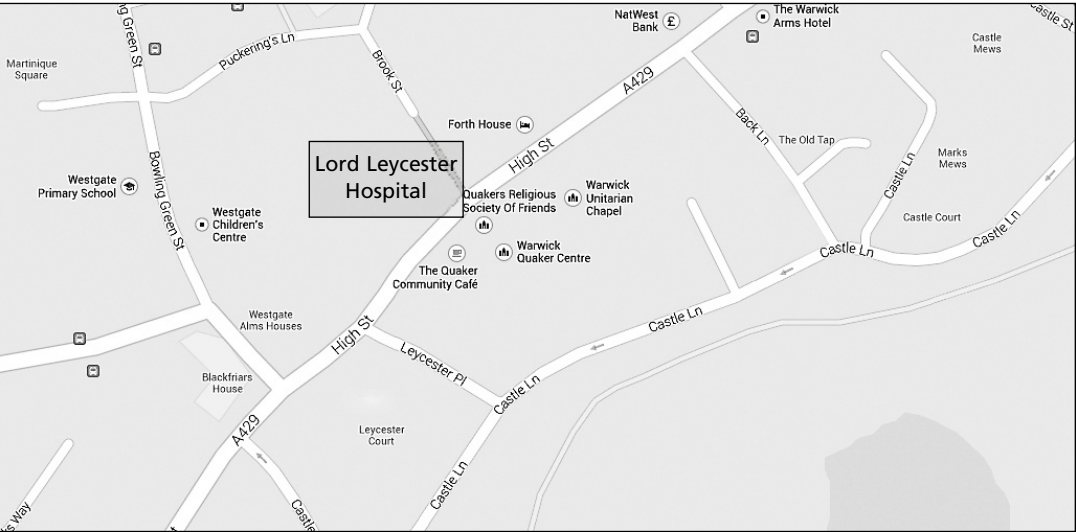
1. authorise Bleasdales Ltd, if they so wish, to charge the credit card given in part or full payment, including all fees, for items successfully purchased in the auction via the-saleroom.com, and
2. confirm that you are authorised to provide these credit card details to Bleasdales Ltd through www.the-saleroom.com and agree that Bleasdales Ltd are entitled to ship the goods to the card holder name and card holder address provided in fulfilment of the sale.

Cites Regulations

Please be aware that certain Lots in this sale may be subject to the CITES regulations if exporting these items outside the EU. These regulations may be found at www.ukcites.gov.uk or may be requested from:

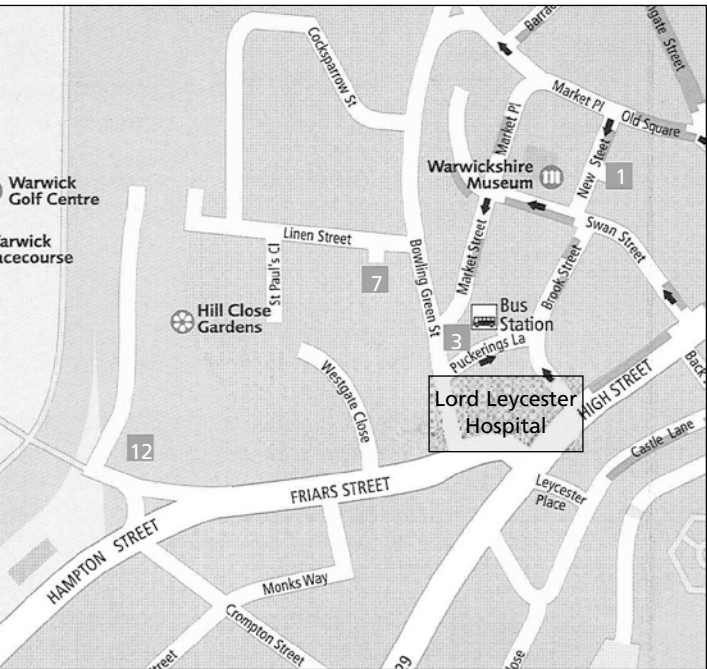
Department for Environment, Food and Rural Affairs (DEFRA)
Global Wildlife Division
1st Floor, Temple Quay House
2 The Square
Temple Quay
Bristol BS1 6EB

Sale Location – Warwick CV34 4BH



Car Parking

For viewing and Sale we recommend car parks 1 / 3 / 7 / 12 on the map below.
Relevant car parking charges are also shown below. P12 represents the best value.



P1	New Street	CV34 4RX	3 hrs (charging applies 24 hours)	£3*
P3	West Gate	CV34 4DE	3 hrs (charging applies 24 hours)	£3*
P7	Linen Street (locked between 8pm – 7am)	CV34 4DT	24 hrs (open between 8am – 8pm)	£6*
P12	The Racecourse St Marys	CV34 6JP	24 hrs (charging applies 24 hours)	£1*

* maximum charge

By Rail
Warwick Station – 10 minute walk
Warwick Parkway – 5 minutes by taxi
Chiltern Line from London Marylebone

By Air
Birmingham Airport

Accommodation/Tourist Information
Warwick Tourist Board +44 (0)1926 492212

Tunbridge Ware

1

A **Tunbridge ware book slide**, the ends with canted tops with panels of cube work within mosaic borders, 39cm.

£50-100

2

A **Tunbridge ware Oxford pattern picture frame**, in mosaic, 15.5cm x 11.5cm.

£30-40

3

A **Tunbridge ware burr maple box of square form**, the hinged lid with a mosaic panel of flowers within a floral mosaic border, the base with geometric mosaic border, complete with key, 15.5cm square, 6cm high.

£50-80

See inside front cover illustration

4

A **rare Tunbridge stickware spinning top**, fitted to the edge as a pin wheel, the centre unscrewing a pincushion or emery, 4cm high, 4.4cm diameter.

£150-250

See front cover illustration

5

Three pieces of Tunbridge ware, comprising; a rosewood barrel with geometric stickware top, 3.7cm, a rosewood puzzle box of square form, the lid in cubes with mosaic border, complete with puzzle, 5cm square, and a mahogany box, the lid in cubes and fitted for a thimble, 3.8cm.

(3)
£50-100

6

A **Tunbridge ware rosewood games box of rectangular form**, the lid with a panel of cubes within a geometric stickware border, plain rosewood sides, paper lined interior, 28cm x 23cm x 7.2cm.

£50-100

7

A **Tunbridge ware rosewood and fiddle walnut box**, the cushion lid with a border of floral mosaic over concave sides with a band of floral mosaic, 18cm x 13cm x 8.5cm, with key.

£50-100

8

A **Killarney Tunbridge ware rectangular box**, in arbutus wood, the lid with a mosaic panel of Muckross Abbey, the banded front with an inset mosaic panel "Killarney Lakes", 23cm x 10.2cm x 7cm.

£80-120

See inside front cover illustration

9

Two rosewood rectangular Tunbridge ware boxes, both with stickware mosaic lids, 10.5cm x 4.2cm and 11cm x 7.8cm x 4.5cm. (2)

£40-60

10

Two rosewood Tunbridge ware boxes, comprising; a stamp box with young head 'stamp' within geometric mosaic border, 4cm x 3.5cm, and a rectangular box, possibly for sovereign scales with a geometric mosaic panel to lid, 12.5cm. (2)

£50-100

11

Five small Tunbridge ware rosewood boxes, comprising; four circular counter examples with rib turned sides, two with mosaic lids, two with stickware lids, largest 3.5cm, and a barrel form waxer with stickware lid. (5)

£80-120

12

Five small Tunbridge ware rosewood boxes, comprising; three circular counter boxes, two with stickware lids, a yo-yo style box with stickware lid, 4.2cm, and a barrel form example with stickware top, 4.8cm high. (5)

£60-100

13

A **pair of diminutive Tunbridge stickware chambersticks**, possibly for a doll, circular bases with turned baluster stems, rosewood handles, variations to patterns, 3.2cm diameter, 2.6cm high. (2)

£100-200

14

A **good rosewood and stickware roundel turned Tunbridge sovereign ball**, six stickware panels, one pushing to reveal a rosewood cylinder with screw cover for sovereigns, 5cm.

£200-400

See inside back cover illustration

15

A **rosewood and Tunbridge ware small rectangular box**, the lid in mosaic with a panel of a cockerel, 5.7cm x 3.4cm x 2cm.

£40-80

See inside back cover illustration

16

A **rosewood and Tunbridge ware ring stand**, the circular base on three turned feet, the central circular velvet panel within a mosaic border, the central pillar in stickware, 8cm diameter, 8.5cm high.

£40-80

See inside back cover illustration

17

A **Tunbridge ware glove darner and a stiletto**, the double ended darner with mosaic cylinder body and rosewood 'egg' ends, 14.5cm, the stiletto with stickware handle and steel shaft, 10cm. (2)

£40-60

18

A **scarce Tunbridge ware bead box of rectangular form**, the lid with a central stickware panel within a conforming border, the blue paper lined interior with a cedar wood compartmentalised tray containing glass beads, 21cm x 14.5cm x 9cm.

£100-200

19

A **Tunbridge ware rectangular box**, the lid in mosaic "Needles" within geometric borders and conforming sides, 6.1cm x 3.4cm.

£40-80

20

A **rare rosewood Tunbridge ware needle flannel cylinder**, the ring turned cylinder body with complete flannel, wound by an overhanging pin wheel top, circular top in stickware, 4cm diameter, 7cm high.

£60-100

See inside back cover illustration

21

An early 19th century Tunbridge ware rosewood box of elongated form, the lid decorated in cube work within a geometric and multiple line border, the sides in rosewood with boxwood lines, bone diamond escutcheon, some minor worm to inner boxwood edge, original paper lined interior, 27cm x 19.5cm x 6.7cm
£60-100

22

Three Tunbridge ware needlebooks and a damaged ladle, comprising; a fine mosaic example decorated to one side with a beetle and a butterfly, to the other a geometric mosaic pattern, disbound, 6.2cm x 3.6cm, another in mosaic, one side with a cross amid flowers, the other an oval of flowers, disbound, 8.5cm x 5.5cm, another with mosaic borders, 5.5cm x 4cm, and a stickware ladle with rosewood handle, approximately 30% of bowl lacking. (4)
£50-100

23

A mid-19th century Tunbridge ware sewing box of sarcophagus form, in pollarded birch and mosaic, the canted lid with central geometric mosaic panel with multiple geometric mosaic borders, the sides with a broad band and two narrow bands of geometric mosaic, the lid interior with silk panel within a mosaic border, the lower section with compartmentalised tray in pink and gold star paper with two mosaic lids, fitted pincushion, tool pad and six plain rosewood silk winders, a little shrinkage and unevenness to the canted border, 27cm x 21.5cm x 12cm.
£200-400

See inside front cover illustration

24

A good set of six rosewood Tunbridge ware reel holders, each with circular stickware top, 2.8cm diameter, 4.2cm high. (6)
£150-250

25

Three pieces of Tunbridge ware, comprising; a rib turned rosewood cylinder needlecase with stickware top, 8.5cm, a cylinder form rosewood and stickware waxer, 2.3cm diameter, and an acorn form thimble case with plain body and domed stickware top, 5cm. (3)
£50-100

26

An unusual Regency period Tunbridge ware sewing box of rectangular form, the lid in cube pattern within a chequer border, plain sides with oval boxwood escutcheon, the interior lined in blue paper and with shallow velvet tray fitted in the French style with bone thimble, stiletto, gilt bodkin, ivory tape measure, ivory crochet hook, ivory circular waxer, ivory circular box, lacking folding knife, scent bottle and two other pieces, replacement steel scissors, the lower section divided and with pincushion, 22 x 16 x 10cm
£100-150

27

A Tunbridge ware rosewood sewing box, the lid in mosaic with a boy wearing a kilt with a parrot and a dog, within a broad border of floral mosaic, interior lacking tray, 28cm x 20cm x 12cm.
£100-200

See inside front cover illustration

28

A Tunbridge ware rosewood sewing box, circa 1835, of shallow sarcophagus form, the lid with cube pattern within unusual zig-zag mixed technique borders and similar side border, raised on four brass feet, the interior relined in yellow silk and paper, with tool lid, two pincushions and a variety of compartments with a set of eight rosewood silk winders, slight split to part of cube panel, 22cm x 16cm x 9cm.
£100-200

29

A delightful early 19th century painted Tunbridge ware sewing clamp, the rectangular frame with line and fruiting vine decoration, below a vase form pincushion with conforming decoration, the silk pad with gilt wire border, 11cm.
£50-100

See front cover illustration

30

A fine Tunbridge ware and oak veneered rectangular sewing box, labelled for Edmund Nye, the cushion form lid with a central mosaic panel of flowers within a geometric border and a leaf mosaic border, the sides with a narrow geometric mosaic border and a broad floral border, the base with printed rectangular label for Edmund Nye, the original interior with a ruched velvet panel to the lid within a geometric mosaic frame, over a compartmentalised tray lined in blue velvet with four mosaic lids, fitted pincushion, tool card with silver bodkin, steel stiletto and needlecase, with a pair of Tunbridge stickware circular silk winders, a set of four stickware reel pegs, a rosewood tape measure with stickware top, a reel form mosaic top waxer and a stickware reel, with a silver finger guard and another thimble, 27cm x 20.5cm x 12cm, with key.
£800-1200

See inside front cover illustration

31

A pair of Tunbridge ware rosewood reels, the tops in stickware, 2.7cm diameter. (2)
£40-60

32

A good rosewood Tunbridge ware pin table, the circular top in stickware within an edge border to take pins, on a circular spreading pedestal raised on a hexagonal base, 8cm diameter, 7cm high.
£100-150

See inside back cover illustration

33

A rosewood Tunbridge ware pincushion clamp, the cylinder body with end circular stickware and mosaic panel below a rectangular pincushion, 5.75cm.
£50-80

34

A rosewood Tunbridge ware needle box of rectangular form, the lid with a mosaic panel "Needles" within mosaic borders over conforming sides, 6.2cm x 3.2cm x 1.7cm.
£60-100

See inside front cover illustration

35

A rosewood Tunbridge ware pin box of rectangular form, the lid with a mosaic panel 'Pins' within mosaic borders over conforming sides, 6.2cm x 3.2cm x 1.7cm.
£60-100

See inside front cover illustration

36

A fine pollarded oak and Tunbridge ware sewing casket, the hinged lid centred by a raised tablet with a mosaic panel of a bird and with four sloping sides, each with a mosaic geometric panel within stickware borders, the front enclosed by a pair of doors with oval mosaic geometric panels within stickware borders outlined with van dykes, the sloping sides each with a panel of cube work within geometric stickware border, the whole raised on stickware canted base and four stickware bun feet, the lid revealing a well re-lined interior with lift-out compartmentalised tray with a set of six rosewood reels with stickware tops, a circular stickware pincushion, a rosewood stickware pin wheel, two stickware circular silk winders, a reel form waxer with stickware and mosaic ends, a diminutive stickware standing pincushion, a rosewood thimble, a silver finger guard, four steel tools, and a gilt bodkin, the front opening to reveal four graduated drawers banded in stickware, each door with an internal mosaic panel of a bird, complete with a key, max. width 33.5cm, depth 28cm, height 31cm.
£2500-3500

See front cover illustration

37

Five pieces of Tunbridge ware, comprising; a needlebook with mosaic border, 5.5cm, a cross form silk winder in mosaic, 4.3cm, a stickware combination waxer and pincushion, 4cm, a cylinder form rosewood tape measure with stickware top, complete with printed tape, 4cm, and a stickware cylinder form waxer, 2cm. (5)
£80-120

38

A Tunbridge ware double ended pincushion, in mosaic, with blue velvet ends, 2.8cm. a ribbon and button end stickware bookmark and a circular silk winder 4.5cm dia (3) (Pelham Burn Collection)
£25-35

39

Three Tunbridge ware needle books in a variety of geometric mosaic and stickware, all with ribbon ties and flannels, largest 5.8cm x 4cm. (3) (Pelham Burn Collection)
£50-100

40

A pair of Tunbridge ware button end stickware waxers, 2cm diameter. (2) (Pelham Burn Collection)
£30-50

41

Three pieces of Tunbridge ware, comprising; a standing combination waxer and pincushion in stickware, 3.8cm, a stickware button end waxer, 2.8cm, and a disc form waxer, 3.2cm. (3) (Pelham Burn Collection)
£50-80

42

Two pieces of Tunbridge ware, comprising; a standing combination waxer and pincushion in stickware, 4.5cm, and a reel form waxer in mosaic, 2.8cm diameter. (Pelham Burn Collection)
£40-60

43

Three pieces of Tunbridge ware, comprising; a standing combination waxer and pincushion, 4.8cm, and two reel form waxers in stickware, largest, 2.4cm. (3) (Pelham Burn Collection)
£50-100

44

A Tunbridge ware rosewood sewing clamp, the circular frame with a geometric mosaic banding below a stickware vase form pincushion, 19cm.
£60-100

See inside back cover illustration

45

A rosewood and Tunbridge ware sewing clamp, fitted with a pincushion, the cylinder form body with mosaic end panel, 12.5cm.
£50-80

46

A rare 'double' Tunbridge ware slant top needle packet box, the slant top with geometric mosaic panel, the sides with two bands of geometric mosaic, 6cm x 6cm 3cm.
£100-200

See inside back cover illustration

47

A scarce cylinder form Tunbridge ware sewing weight, the lead cylinder with turned rosewood stickware domed ends, 4cm diameter, 3.5cm high.
£80-120

*See Sylvia Groves plate, No. 44

48

A good Tunbridge stickware pincushion teapot, velvet dome with bone finial, rosewood spout, the turned stickware body incorporating a pin wheel, disc form stickware circular handle, 7.5cm.
£80-120

See inside back cover illustration

49

A good Tunbridge stickware pincushion kettle, velvet dome with bone finial, rosewood spout, the turned stickware body with swinging brass wire handle, with rosewood insulator, 7cm.
£60-100

See inside back cover illustration

50

A rare rosewood and Tunbridge ware winding clamp, the ring turned rectangular frame with stickware panel, below a tapering open reel below a stickware cup, 14.5cm.
£80-120

See inside back cover illustration

51

A Tunbridge ware needlebook in mosaic, one side decorated with a panel of an anchor and flowers, the other in flowers, both within geometric mosaic border, flannel, ribbon ties, 8cm x 5cm.
£40-80

52

A Tunbridge ware needlebook in mosaic, one side decorated with a butterfly, the other geometric mosaic, flannel, ribbon ties, 5.2cm x 3.2cm.
£40-60

53

A Tunbridge ware needlebook in mosaic, one side decorated with a panel of a swan, the other cubes, the interior in unusual variant geometric patterns, replacement spine, flannels and ribbon.

£40-60

See inside back cover illustration

54

A matched pair of Tunbridge turned stickware cross form silk winders, 5.2cm. (2)

£40-60

55

A good Tunbridge turned stickware lace or pattern pricker, complete with screw cover, 8.2cm.

£40-80

56

A good Tunbridge turned stickware lace or pattern pricker, rib and plain turned body, complete with screw cover, 8cm.

£40-60

57

Two rosewood and Tunbridge ware cylinder form tape measures, one with turned rosewood body, on stickware base, with stickware overhanging top, replacement complete printed tape in inches, 3cm, and another with turned rosewood body and base, domed overhanging stickware top with spindle wind printed tape, first inch replaced, 4.5cm high. (2)

£40-80

58

A rosewood Tunbridge mosaic cylinder tape measure, the octagonal mosaic body below a mosaic overhanging top, complete printed tape in inches, 3.4cm high.

£40-60

59

A good Tunbridge ware and burr maple rectangular sewing box, with a set of Tunbridge reel holders, the curved top with a mosaic view of Edridge castle within a geometric mosaic border, the sides with a band of floral mosaic, the interior re-lined in paper and fitted with a tray with removable pincushion, rosewood thimble, set of six rosewood reel holders with stickware tops, each reel with a printed label to the base, five for I.P. Clarke, Lester, one for Raworth, 18.5cm x 11.5cm x 8cm.

£300-500

See inside front cover illustration

60

A Tunbridge whitewood rectangular reel box, the sliding lid with a view of a rural church, the paper lined interior with three divisions and holes to one side, 12.5cm x 5cm x 4.5cm.

£40-60

61

A Tunbridge ware, burr maple and rosewood sewing box of rectangular form, the lid with an inset mosaic view of Tunbridge Castle within a rosewood outer border, the sides with a narrow band of geometric mosaic and a broad band of floral mosaic, the interior re-lined in paper with a whitewood lidded and compartmentalised tray with four tools, 25.5cm x 18cm x 10.5cm.

£100-150

See inside front cover illustration

62

A Tunbridge ware sewing box of rectangular form, the lid and front in cube pattern within rosewood feather borders inlaid with pewter lines and mother of pearl roundels, the lid interior with ruched silk lid panel within a tooled leather frame over a compartmentalised and lidded tray in crimson paper and floral cloth with pewter inset dividers, 30.5cm x 23cm x 12.4cm.

£100-150

See inside front cover illustration

63

A Tunbridge ware needle packet box, in pale burr with two bands of mosaic below a sloping top with mosaic panel of a windmill and domestic buildings with trees beyond, 6.2cm high.

£50-100

64

Two Tunbridge ware pin wheels, comprising; a large example in stickware, 5.2cm, and another, 4.5cm. (2)

£50-80

65

Two Tunbridge ware needlebooks, comprising; an unusual cube and broad banding pattern, leather spine and complete flannel, 6.5cm x 4.5cm, and a smaller floral mosaic example, 5.8cm x 3.8cm. (2)

£40-80

66

Four pieces of Tunbridge ware, comprising; a disc form pincushion in stickware, 4cm, a stickware thimble egg, 4.5cm, a rosewood rib turned cylinder tape measure with overhanging stickware top, the tape inked in 'nails', 2.2cm, and a stickware combination waxer and pincushion of pedestal form, 3.5cm. (4)

£80-120

See inside back cover illustration

67

Four pieces of Tunbridge ware, comprising; a cross form mosaic silk winder, 5.5cm, another circular in stickware, 4cm, a stickware disc form pincushion, 3.5cm, and a double ended pincushion with mosaic girdle, 3.5cm. (4)

£80-120

68

Two pieces of Tunbridge ware, comprising; a stickware circular pincushion, 5cm diameter and a combination stickware waxer/pincushion and tape measure, printed tape commencing at the half inch, 6cm high. (2)

£50-100

69

Five pieces of Tunbridge ware, comprising; a rosewood reel holder with stickware top, 3cm, a rosewood stickware reel form waxer, 2.2cm, a rosewood cylinder tape measure with overhanging stickware top, tape probably replaced, 2.8cm, a rosewood cylinder box with stickware lid, 3cm diameter, and a line painted whitewood cotton barrel, 4cm. (5)

£80-120

70

A Tunbridge ware silk winder in geometric mosaic, 5.2cm, together with a 'Wheeler and Wilson Sewing Machine', needlecase of turned rosewood, the metal button top with radiating numerical divisions. (7)

£60-80

71

A rosewood Tunbridge ware combination pincushion waxer and tape measure, of pedestal form incorporating stickware and mosaic, the reduced tape commencing at 5", 6.4cm.

£30-40

72

A Tunbridge ware weighted macramé box of rectangular form, the hinged lid inset with a pincushion within a canted geometric border, the sides in floral mosaic, the interior with original decorative paper lining, 15cm x 10cm x 9cm.

£100-150

73

Two pieces of Tunbridge ware, comprising; a rosewood sewing clamp, the cylinder frame with an end circle of stickware below a trough form pincushion, 7cm high, and a brush, the pale top inset with a panel of floral mosaic, 11.3cm. (2)

£30-50

74

An unusual Tunbridge ware sewing clamp, the rectangular block with mosaic inlay to the edge, the top mounted with a screw-in plug with stickware top, 22cm.

£30-50

Reference Books

75

Holmes (E. F.): A History of Thimbles. 1st edition 1985, dustwrapper torn.

£10-20

76

Reference Books: Proctor (M.): Needlework Tools and Accessories. 1990, d.w.; McConnell (B.): The Story of Antique Needlework Tools. 1999, d.w.; Houart (V.): Sewing Accessories. 1984; two D.H.C. Carte de Couleurs and a Harris Linen sample sheet. (6)

£30-50

Tape Measures

77

A good silver tape measure of cylinder form, decorated with flowers and leaves, the complete printed tape winding from the top, 2.3cm.

£50-100

78

An unusual combination thimble/tape measure, the acorn form tape measure with leaf engraved dome top and winding spindle, shortened printed tape, nesting into plain thimble with the maker's mark of George Unite. (2)

£50-100

79

An unusual novelty tape measure, in the form of a lidded brass jug, the lid hinged to reveal a space for a thimble, the lower section with tape measure wound from the base, tape grubby and reduced, 5cm high.

£30-50

80

An early 20th century novelty tape measure in the form of an owl, metal and celluloid, on a tripod base acting as a winder, the complete tape printed in inches, 5.2cm.

£50-80

81

Two novelty tape measures, comprising; a brass kettle with complete tape measure, printed in inches and centimetres, 5.5cm, and another in the form of a thimble, slightly reduced tape, 3cm. (2) (Pelham Burn Collection)

£40-80

82

Four tape measures, comprising; a painted wooden apple, with complete tape, 4cm, a gilt metal spindle wind cylinder form example, tape worn, 3.2cm, a Tunbridge ware example, 3.5cm, and a cylinder form ivory example, 2.8cm. (4) (Pelham Burn Collection)

£50-100

83

Five tape measures, comprising; three vegetable ivory examples, one with Stanhope (6-view Memory of Padstow), a floral decorated celluloid tape measure, and another in the form of a car tyre, 3.5cm diameter. (5) (Pelham Burn Collection)

£40-60

84

Two tape measures, comprising; a vegetable ivory turret form example, the base fitted for a waxer, unmarked tape, 5.5cm, and a vegetable ivory barrel form example with pierced decoration, complete printed tape, the spindle winder incorporating Stanhope (Crystal Palace - Made in France), 4.8cm. (2)

£40-60

85

Three tape measures comprising; a silver cylinder form example, decorated with leaf scrolls and fruiting vines, the silk tape commencing at 1 1/2 inches, 2.8cm, a silver example of hexagonal form, engraved with leaf scrolls, ball top winder, tape within, 3.7cm, and a mother-of-pearl 'bird cage' example, with gilt pillars, printed tape commencing at 3 inches, 2.2cm. (3)

£50-100

86

Three tape measures, comprising; an ivory cylinder form example pierced with hearts and circles, with unmarked tape, 3cm, a bone example of cylinder form with overhanging top, tape worn, 3.6cm, and a vegetable ivory cylinder example with pierced overhanging mother-of-pearl top, tape worn, 2.4cm. (3)

£40-80

87

A rare novelty tape measure, incorporating a pincushion in the form of an early monoplane, gilt brass skeleton framework with silvered wings, tail plane and rudder, the complete tape printed in inches and centimetres, wound by the propeller, the cockpit fitted with green velvet pincushion, near mint, 11cm x 10.2cm.

£80-120

See front cover illustration

88

An ivory combination tape measure and pincushion, of cylinder form on a domed base, the whole with pierced and carved decoration, the tape measure complete with divided tape below a velvet domed pincushion top, 5.5cm.

£40-80

89

A novelty continental porcelain tape measure, possibly Stan from Laurel and Hardy, wearing a bow tie and bowler hat, the spring activated tape printed in inches and centimetres and emerging from his mouth, 5.5cm high.

£40-60

90

No Lot.

91

No Lot.

Pincushions, Retainers & Emeries

92

A miniature 18th century carved wooden shoe, probably a pincushion, 7cm.

£40-80

93

A curious domed velvet pincushion with an old handwritten label to the base "Given by Queen Charlotte to Mrs. O Who gave them to Mrs. Hamilton", 12.5cm diameter.

£30-50

94

A fine 19th century steel pincushion of cut corner rectangular form, one side pierced and engraved with two horsemen and other figures in a landscape, the other with tracery and flowers, 4.5cm x 3.2cm.

£80-120

95

A velvet emery with gilt corner tassels "Made from the silk velvet for the Purple Robe of State ... for The Coronation of H.M. Queen Elizabeth II 1953", in original R.S.N. box, cushion 2.5cm square.

£20-30

96

An 18th century knitted pin ball, initialled and dated to one side "E.M. 1777", the other with two birds and geometric motif, old repair to edge of dated side, 5.5cm diameter.

£300-500

97

A rectangular mother-of-pearl parquetry work pin box of rectangular form, the cushion lid with corner silver mounts and "Pins", green velvet interior lid lining over wooden dished compartments, loss to one corner at rear, mounts hallmarked for Chester, 1896, 10cm x 5cm.

£60-100

98

A silver pincushion in the form of a lady's shoe, Birmingham, 1916, by H. and A., a few minor dents, 10.2cm.

£80-120

99

A silver pincushion in the form of a duck, Birmingham, 1901, by C. and N. and Rd. No., a few minor dents, 5.8cm.

£60-100

100

Two patchwork pin stuck pincushions, comprising; an example as a peaked cap with tassel and hat band, 5cm, and a square form example, 3cm, last v. minor moth. (2)

£40-80

101

A group of pincushions, comprising; a geometric pin stuck star, 8cm, a hexagonal cushion worked with beads with corner bead tassels, 8cm, a square turquoise beadwork example, 5cm, a silk pincushion printed with ceramics and relevant marks within a looped coral border, 12cm x 10cm, a buttoned rectangular pincushion, 12cm x 10cm, a shoe form needlebook, and a similar thimble slipper. (7)

£40-60

102

Three shoe form pincushions and another, comprising; a blue silk bootie, 6cm, a pin stuck material shoe with initial "D", 7cm, a white metal Persian style slipper pincushion with suspension loop, 4.5cm, and a natural acorn form pincushion, 4cm. (4) (Pelham Burn Collection)

£50-100

103

Five pincushions, comprising; a brass frame chair with pincushion seat, 9cm, another formed from a sea urchin shell, 4cm, an embroidered fan form pin card, a paisley velour circular pincushion, 4.5cm, and a pin stuck bellow form pincushion with brass bodkin ferrule, 11cm. (5) (Pelham Burn Collection)

£50-100

104

Five pincushions and emeries, comprising; a cardboard book form emery with gilt spine, 3cm x 3.6cm, two circular mother-of-pearl examples, 4cm and 2cm, a turned rosewood girdle form double ended pincushion, 2cm, and an embroidered strawberry emery, 3cm. (5) (Pelham Burn Collection)

£50-100

105

Three emeries and a waxer, the emeries in the form of a knitted and beaded strawberry, 4.5cm, a small doll with green dress and white apron, 5.8cm, and a material cat, 4cm, the waxer in the form of a strawberry with gilt metal mount, 4.5cm. (4) (Pelham Burn Collection)

£40-80

106

Seven pincushions and emeries, comprising; an ivory circular example with burnt circle decoration, 3.6cm, a Canton ivory circular example, pierced with figures, pagodas and trees, 4cm diameter, a patchwork geometric example with beadwork decoration, s.d., 2.5cm, a leather pumpkin, 2.2cm, an oval example, one side painted with river landscape, 6.5cm, a circular paper example in cut and raised paper decorated with flowers, 6.5cm diameter, and a circular example, one side embroidered with a flower and leaves, 4.8cm. (7)

£60-100

107

Twelve pincushions and emeries, including two bog oak examples, an olivewood example inscribed "Cannes", an embroidered circular silk pincushion, a globe tablet, 5.5cm diameter, a hare form emery, 9.5cm, a velvet heart form example incorporating a bevel edge mirror and others. (12)

£40-80

108

Five mother-of-pearl pincushions and emeries, comprising; three circular examples all with decoration, largest 3cm, a cut corner rectangular example, inscribed, 3.7cm, and an oval example inscribed "A Present", 4.3cm. (5)

£50-100

109

Four pincushions and emeries, comprising; a bone example in the form of a set of bellows, 6.5cm, a bone pedestal example, 6cm, and a velvet emery in the form of a strawberry with pierced white metal mount, 5cm, and a mother-of-pearl circular form pincushion, 3.2cm. (4)
£50-100

110

Two fine mother-of-pearl pincushions, comprising; an oval example, the upper section pierced and carved with flowers and leaves, 4cm, and a circular example, the upper section pierced and carved with a star, the segments fitted with leaves, 4cm. (2)
£80-120

111

Three ivory pincushions, comprising; a 'stacked brick' vase form example with ring handles and lobed rim, 3.5cm high, an oval example, one side pierced with flowers and leaves, 3.5cm, and a double end barrel form example, 5cm,. (3)
£50-100

112

Two good ivory pincushions, both circular, one carved to one side with flowers and fruit, 3.8cm diameter, the other centred to one side with a starfish motif on blue velvet within a feather carved border, 4.8cm.
£50-100

113

Three reverse printed pictorial glass pincushions, comprising; "The Victory Portsmouth", mirror to reverse with small chip 4.5cm, another "Clifton - Hot Wells", mirror to reverse, 3.6cm, and another "Palace of Parliament", 4.5cm. (3)
£50-100

114

A beadwork circular pincushion in the pin ball style, one side dated 1837, the reverse with a geometric motif in white beads, on brown knitted ground, minor mothing, 5cm.
£40-80

115

A rare late 19th century Chinese silver pincushion in the form of a duck, well decorated, marks to base, 5.5cm.
£100-200

116

A silver pincushion in the form of a half walnut, raised on three ball feet, blue velvet inset, Birmingham, 1888, by E. S. B., 5.5cm.
£80-120

117

Six silver and metal pincushions, comprising; a swan, stamped "Stirling", 4cm, a circular silver pincushion, Birmingham, 1908, 5.2cm, two silver plated shoe form examples, and two others in pewter, one lacking infill, both 10.5cm. (6)
£40-80

118

A good tortoiseshell and pique work heart shaped pincushion, with hanging loop, one side worked with silver wire, mother-of-pearl and abalone shell, 6.5cm.
£50-100

119

Three waxers and two emeries, comprising; three disc form waxers in bone, ivory and mother-of-pearl, largest 2.2cm, an emery, the turned bone body with pierced and carved mother-of-pearl overhanging top, 2.6cm diameter, and a book form emery with gilt foil spine and bindings, contents leaking (5)
£40-60

120

A group of pincushions, comprising; a diamond form pin card, one side in silk and painted with a butterfly, 8.4cm, two Japanese watercolour examples, the reverse advertising "Cobra Polishes", 6.5cm, a leather pumpkin, a felt pumpkin emery, a heart shaped example decorated with small sea shells and three others. (9)
£40-60

121

Four reverse printed pictorial glass pincushions, comprising; a large circular example "Shakespeare's Birthplace", 6.2cm, another, Canterbury Cathedral, mirror to reverse 4.5cm, another "Hotel Hunstanton", mirror to reverse, 3.6cm, and an oval example, untitled, a large building, a bridge in foreground, rebacked, 5.5cm. (4)
£50-100

122

Two matching knitted pin balls, late 18th/early 19th century, worked in a variety of colours, one initialled twice "J.C.", the other initialled twice "J.C." with the "J" variant, each approximately 6.5cm diameter. (2)
£500-800

* With a note bearing a Phillips Oxford lot number 289 (sale 1480)

and in crayon to one side "Mrs. Ladywell, 11, Lillian Street", further inscribed "circa 1800", to the reverse an old pencil inscription "2 balls made by Granny J. Lydall for her first 2 children Joseph and John Cawtrell".

123

A silver pincushion in the form of a swan, its beak resting on its neck, Birmingham, 1901, by Aidie & Lovekin Ltd., 5.8cm wide.
£150-200

124

An unusually large silver pincushion in the form of a swan, of heavy gauge with well detailed feather and feet, the swan's neck raised, Birmingham '1907', maker's mark a little indistinct, 7.8cm wide, 6.4cm high.
£200-250

125

A silver pincushion in the form of a seated frog, Birmingham '1907', by S. and Co., 5.5cm wide.
£200-400

126

A scarce silver pincushion in the form of a lizard in motion, Birmingham '1913', by C. and N. , Rd. No. 495897, 11cm long.
£400-600

127

A scarce silver pincushion in the form of a standing donkey, Birmingham, '1910', by Levi and Soloman, 7.5cm wide.
£400-600

128

A scarce silver pincushion in the form of a standing bulldog, Birmingham '1905', by Adie and Lovekin Ltd., 7cm wide.
£300-400

129

No Lot.

130

No Lot.

Work Boxes, Etuis, Necessaires & Companions

131

An impressive Regency penwork, print and inlaid rosewood sewing box of bombe form, the lid centred by a colour print of two cherubs, annointed by a lady in classical dress within penwork leaf and flower border and concave edge mould, the lower section with two conforming penwork bands and with elaborate floral cornucopia gilt brass side handles, raised on a stepped base with geometric inlaid decoration, fitted with a drawer, on gilt brass paw feet, the lid interior with a penwork mirror frame over a series of trays, boxes and lidded compartments, the fittings including a set of three silver topped scent bottles, a pair of glass bottles, a set of six line painted cotton barrels, five line painted reels, line painted tape measure, steel scissors, removable box pincushion and silk needlebook, 38cm x 31.5cm x 26cm.

£400-600

132

A frosted blue glass etui in the form of an egg, with gilt metal hinge mount, suspension ring and chain, the interior unfitted, 12cm, with a miniature gilt handled stiletto and two miniature thimbles, one on a chain. (4)

£50-100

133

A late 18th/early 19th century porcelain etui, painted in puce with a lady and gallant seated in a wooded landscape and standing in a river landscape, the hinged cover painted with a river or lake landscape, a village beyond, gilt metal mount, small crack at back of hinge, marked to base in blue with three stroke asterix and an 'S', 10.5cm.

£300-500

134

A carved mother-of-pearl almanack cover/companion of rectangular form, the cover carved with a mother seated in a chair with two children in an open landscape, watered silk interior, with unused notebook in matching silk with printed title page "Souvenir a Paris Chez Editeur" and folding card for the seven days of the week, replacement pencil, 9.5cm x 6.6cm

£50-100

135

An early 19th century satinwood and cut steel decorated rectangular sewing box, the front and lid with faceted cut steel medallions, mother-of-pearl escutcheon and lid plate, the lid interior in blue ruched silk with tooled leather frame, the lower section with blue silk lidded and compartmentalised tray with four bone reel holders (s.d.), ivory cylinder needlecase and mother-of-pearl handled stiletto, slight split to lid, 28cm x 20.5cm x 11.5cm.

£200-400

136

A good mid-19th century burr maple, ebony line and motif inlaid sewing box of rectangular form, mother-of-pearl escutcheon and lid plaque initialled "E.M.M.", the lid interior with blue ruched silk panel in tooled leather frame, the lidded and compartmentalised tray in floral blue fabric, fitted with a set of six mother-of-pearl reel holders, matching tape measure and cylinder emery, variant waxer, a further pair of mother-of-pearl reels and a cut glass scent bottle, fitted to the centre with a further removable tray with four circular mirror compartments housing Chinese snowflake winders, two mother-of-pearl thimbles, mother-of-pearl stiletto, French mother-of-pearl tapering needlecase, mother-of-pearl handled scissors, silver floral decorated tweezer/earspoon, a mother-of-pearl needlebook engraved with figures and landscapes, mother-of-pearl circular pin disc and a cylinder mother-of-pearl box, replacement gilt metal scissors, incorrect folding knife and one space vacant, 33cm x 23.7cm x 13cm.

£400-600

137

A fine leather cased etui by Dreyfus, Paris, the green leather rectangular case decorated in gilt with a chinoiserie style panel within tooled borders and stamped "Dreyfus - Paris - London - New York", the interior of the lid lined in silk with Royal Warrant in gilt and by appointment "To His Majesty King George/T.M. Queen Mary and Queen Alexandra, Dreyfus ...", the lower section lined in pale velvet with a complete complement of silver gilt tools decorated in the chinoiserie style with repousse decoration and comprising a stiletto, a pair of steel bladed scissors, a bodkin, a needlecase and a thimble, the last with floral border and vacant cartouche, 14.2cm x 9.2cm x 2.5cm.

£400-800

See front cover illustration

138

A good burr maple etui of oval section and tapering form, with a rosewood cartouche to the lid, the lid interior in red with the lower section in red velvet and fitted with a silver gilt and turquoise set stiletto, matching steel bladed scissors and needlecase, the thimble with a broad frosted frieze with trailing oak leaves and an oval cartouche initialled "M.H.S.", bodkin lacking, minor damage to one arm and on one side of scissors, 12cm x 6.2cm x 2.5cm.

£300-500

139

A mid 19th century green leather book form "Lady's Companion", with gilt tooled decoration, the interior with ivory notelet, silver sliding pencil, a cut glass scent bottle with silver top, a leather skein holder tool case with steel stiletto, bodkin and scissors, and fitted with a drawer with thimble compartment and pincushion to top, the drawer with three wooden reels, 10cm x 8cm x 4.5cm.

£150-250

140

A good ebony and brass inlaid oval etui, the lid cartouche initialled, the lid interior lined in watered ivory silk, the lower section in velvet and fitted with a stiletto with floral repousse handle, a floral gilt bodkin, a pair of steel bladed scissors with floral scroll arms and decorated oval loops, a needlecase with floral panels and scroll decoration, the thimble with frosted border and raised wirework with a raised cartouche, initialled "F.H.", 12cm.

£300-500

141

A Victorian walnut sewing box of rectangular form, the lid and front with coloured geometric banding, mother-of-pearl escutcheon and lid plate, the interior with buttoned red silk lid panel over a compartmentalised and lidded tray with pincushion and a selection of mother-of-pearl handled tools, 28cm x 20cm x 15cm.

£100-200

142

A 19th century French walnut and white metal banded and inlaid rectangular box, with central inlaid panel to lid, the lid interior lined with glass with a loose internal lid to the base, with key, 14cm x 9.5cm x 8.4cm.

£80-120

143

A mid-19th century sewing companion, the red leather covered rectangular box with white metal tablet, the blue silk and velvet lined interior with bright cut silver tape measure, tape within, girdle form double ended pincushion and waxer with bright cut ends, and a silver thimble, the lid with a pair of engraved silver handled scissors, one arm loose, box a little tired, 9cm x 5cm x 4.5cm.

£50-100

144

An American silver sewing companion in the form of a cocktail shaker, with thimble inset to lid, internal reel with central pincushion, marked to base "Patented 1912 Alvin Sterling", 6.5cm. (Pelham Burn Collection)

£50-80

145

A late 19th century French sewing box for a child, of rectangular form, white painted, the lid with metal mounts, the interior in red silk with central tool card over mirror compartment, flanked by a set of winders, one replaced, complete with waxer, thimble and three tools, press catch lacking, 14cm x 5.5cm x 4cm. (Pelham Burn Collection)

£50-100

146

A Victorian rosewood sewing box for a child, with coloured geometric inlay to top and front, the interior with compartmentalised and lidded tray, 18cm x 11.5cm x 8cm. (Pelham Burn Collection)

£30-50

147

A sewing companion for a child in the form of a leather shoe, in black and tan with lace, the interior with small reels and thimble. 12cm. (Pelham Burn Collection)

£40-80

148

Two small 19th century Anglo Indian Sadeli work and ivory sewing boxes, possibly for children, both of sarcophagus form, both with lidded and compartmentalised interiors, both s.d., 18.5cm and 16.5cm. (2) (Pelham Burn Collection)

£80-120

149

A leather and material sewing companion for a child, in the form of an oval bag, steel catch, red lined interior with steel scissors and sundry tools, worn, 15cm. (Pelham Burn Collection)

£30-50

150

An early 19th century chip carved walnut box, carving to all all sides and lid, ivory diamond escutcheon, 18cm x 14cm x 11cm.

£40-80

151

A good early 19th century turned rosewood and penwork turret form sewing compendium, the circular base with penwork border and with a central turret fitted with a domed pincushion and lower compartment, encircled by a pair of reels on spikes, a similar waxer, and three further small turrets, two fitted with pin poppets, the other with a tape measure with hand inked tape, the whole raised on three turned feet, 8cm diameter, 11cm high.

£200-400

See front cover illustration

152

A mid-19th century rosewood sewing box for a child, of rectangular form, the lid with pewter line and mother-of-pearl roundel decoration, the interior lined in blue paper with a lidded and compartmentalised tray with a full complement of fittings, comprising six mother-of-pearl top reels, two tools, two variant mother-of-pearl silk winders, a circular mother-of-pearl pincushion and a similar emery, 18cm x 11.5cm x 8cm.

£80-150

153

A mid-19th century rosewood sewing box of sarcophagus form, with pewter line and mother-of-pearl roundel inlay, on four bun feet, the lid interior with silk panel, over a compartmentalised and lidded tray with pewter lines, with five pierced mother-of-pearl top reel holders, a mother-of-pearl shuttle, a silver thimble engraved "Gloster" and three tools, 22.5cm x 17.5cm x 14.5cm.

£100-200

154

A Regency sarcophagus form pen work sewing box, the lid decorated with Chinese style figures in and around an arbour and trees within a floral concave mould, the sides decorated with flowers and chinoiserie scenes, brass ring handles, the lid interior with an Alpine pencil and watercolour picture over a compartmentalised and lidded tray with a few tools, 28.5 x 21.5 x 12.5cm.

£80-120

155

A rare silver sewing companion in the form of a whistle, engraved with a monogram, the hinged cover below a suspension loop, the interior fitted with three division reel within a pin wheel, London, 1889, makers mark indistinct, 8cm.

£300-500

156

A fine cut card and paper applique Regency sewing companion of rectangular form, pierced with hexagons centred to each side with a circular paper motif within gilt foil corner borders and fitted with a 'book' titled "Poems", tied with a yellow ribbon and containing an attached yellow silk skein holder and matching rectangular pincushion, 8.5cm x 3.8cm and 1.5cm.

£200-400

157

A scarce papier-mâché Lady's Companion, the 'spine' top and 'leaves' in gilt leaf scroll work, one side with a peacock in a floral and open landscape, the other with a fountain, the interior in red/crimson silk with matching skein holder/needle flannel, ivory notelet, steel scissors, folding knife with papier-mâché decorative scales, silver thimble and silver scroll decorated tape measure, lacking tape, named to the base in gilt "E. Hart", 9.7cm x 6.2cm x 4.5cm.

£250-350

158

A French red leather cased sewing etui of rectangular cushion form, circa 1920, with a full complement of tools comprising a silver handled stiletto, a bodkin, thimble, pair of silver handled scissors and a needlecase, 2.5cm x 7.5cm.

£80-120

159

A French red leather cased sewing etui, with gilt line decoration, with five silver mounted floral decorated tools, comprising; a stiletto, bodkin, thimble, silver handled scissors (matched), and a needlecase, 14cm x 9.5cm.

£80-120

160

A brown leather and gilt tooled leather etui of oval section and tapering form, by "Jacquet, Nancy", with wreath and anthemion decoration, the interior with silk lining to lid, the lower section in green velvet with gilt metal swan head stiletto, steel bladed scissors with swan head arms to oval loops, leaf scroll decorated needlecase, bodkin and thimble with snake decoration, 15cm x 9cm max.

£200-300

161

A silver suitcase form sewing compendium, by Samuel Mordan, the case with 'straps' and marked by the handle "Thornhill", hinged to one side and opening to reveal a central needlecase supporting a double reel, a pin cylinder and a spike, London, 1874, 5.2cm x 4.4cm.

£400-600

162

A good oval tortoiseshell 19th century etui, by Lund of London, the lid with oval silver cartouche, the interior with ivory edge, engraved "Lund, Maker, 56 and 57 Cornhill, London", lined in blue velvet with oval section engine turned tapering silver needlecase, stamped "Lund", two variant size bodkins, a silver thimble with reeded frieze decorated with foliate branches encircling a cartouche, a pair of steel scissors stamped "Lund", and a silver tweezer/earspoon, last item possibly replacing a folding knife, 11cm.

£200-400

163

A fine kingwood cased etui, circa 1880, by Tahan of Paris, of shaped serpentine oval outline, the lid in kingwood cubes interspersed by ivory triangles, the interior in pale velvet and silk, engraved to the brass catch "Tahan Paris", with a complete complement of gilded steel fittings, comprising an oval section needlecase decorated with birds and scrolls, an elegant pair of scissors gilded with flowers and dots, a thimble with reversed gold frieze, a bodkin, and a stiletto, all with conforming decoration, 12.5cm.

£300-500

164

A late 19th century French etui in the Palais Royal style, in the form of a frosted glass egg on a gilt metal nest, raised on four feet, the interior within a velvet tool card, thimble only present, 9.5cm.

£80-120

165

An early 19th century Spa work sewing box of rectangular form, the lid painted with a group of flowers, the sides and front painted with a dog, the lid interior with mirror and painted frame, over a compartmentalised and lidded tray with floral decoration and fitted with reels, a pair of circular boxes, and a pair of cylinder needlecases, shrinkage and damage to rear of lid, 35cm x 23.5cm x 9.5cm.

£100-200

166

An early 19th century Irish leather covered sewing box of rectangular form, the lid with raised panel within radiating fan segments, the lower section with tooled leather corners, brass ring handles, brass ball feet, the interior with a fitted tray below a ruched panel in tooled surround, bearing red and gilt leather label "Sarah Moss, Kilternan" (Co. Dublin), 22cm x 12cm x 16cm.

£80-120

167

A late 19th century green plush covered sewing box, with domed top, gilt metal pierced straps, the green lined interior with a selection of tools housed in the lid and a matching needlebook, 24cm x 18cm x 12.5cm.

£40-80

168

No Lot.

169

No Lot.

Reels, Reel Boxes & Reel Stands

170

A set of four mother-of-pearl top reel holders, on bone bases, 3cm diameter. (4)

£40-60

171

A rare globe form cotton dispenser, the globe in gores on a wooden core, on an ebonised turned wooden circular base, 7.5cm diameter, 10cm high.

£200-300

172

A group of ivory and other cotton barrels and reels, comprising; four variant Chinese examples, two lacking spindle winders, another two with Sadeli tops, a good barrel from example, another, and a pair of mother-of-pearl top reels, largest 4.5cm. (11) (Pelham Burn Collection)

£50-100

173

A group of fifteen labelled wooden reels, showing the range of counts (thickness) of cottons available, ranging from counts of 20 to 150 and yardages of up to 200, smallest reel 2.4cm. (15)

£30-50

174

A 19th century sewing basket, formed from an armadillo, its tail to its mouth forming the handle, material lined, 18cm wide.

£30-40

175

A rosewood reel stand, the circular base supporting two circular tiers with five reel holders below a vase form pincushion, 18cm high, 10.5cm diameter.

£50-100

176

A group of reels and barrels, comprising; a bone reel holder with fancy top, labelled for "I. & W. Taylor", 3.4cm, another initialled, a small plain reel, 2.4cm, a bone reel for "Raworths Nine Cord", 2.8cm, an ivory cotton barrel, .5cm, a Canton carved ivory cotton barrel, and a wooden reel for "Purse Silk Eye Glass Cord", 4cm. (7)

£50-80

177

A thread retainer in the form of an umbrella, formed from a knitting needle, the partially open umbrella in green cloth applied with yellow beads and pearls and forming six segments, forming holders for silks, 18cm.

£20-40

178

An unusual brass bound mahogany reel box of rectangular form, in the military style, the lift-off lid with a large black on green printed label "Sold Here - Taylors Persian Thread" around company crest, the lower section fitted with a tray over a series of graduated compartments, 51cm x 30cm x 10cm.

£100-200

179

No Lot.

180

No Lot.

Winders

181

A set of four 'H' form mother-of-pearl silk winders, engraved with arrowhead pattern highlighted in gilt, 3.6cm. (4) (Pelham Burn Collection)

£40-80

182

Ten variant mother-of-pearl silk winders, largest 5cm. (10) (Pelham Burn Collection)

£50-100

183

Ten variant mother-of-pearl silk winders, largest 5cm. (10) (Pelham Burn Collection)

£50-100

184

Pairs of mother-of-pearl silk winders, comprising; a small pair of snowflakes, 3cm, a pair of bow tie form, 3.8cm, and two cross form pairs. (8) (Pelham Burn Collection)

£50-100

185

Two boxed sets of cardboard child figural winders, comprising; a boxed set of three labelled for "Pohlson", two with bodkins, box 12.5cm x 7cm, and another set of four, the box lid with verse "Dorcas Demure and Priscilla Prim", box 10cm x 6cm. (2) (Pelham Burn Collection)

£50-100

186

Ten various bone and ivory silk winders, of various forms, largest 6.5cm. (10) (Pelham Burn Collection)

£40-80

187

Ten various bone and ivory silk winders, of various forms, largest 5cm. (10) (Pelham Burn Collection)

£40-80

188

Ten various bone and ivory silk winders, of various forms, largest 6.5cm. (10) (Pelham Burn Collection)

£50-100

189

Ten various ivory and bone silk winders, including pierced and painted examples, including one shaped as a frog, largest 5.2cm. (10) (Pelham Burn Collection)

£80-120

190

Four pairs of bone and ivory silk winders, including a multiple pair, and a multiple winder, 7cm x 5cm. (9) (Pelham Burn Collection)

£80-120

191

Ten various wooden silk winders, largest 6cm. (10) (Pelham Burn Collection)

£50-100

192

Eight various wooden silk winders, including named examples, Spa work, and other decorative examples, largest 7.2cm. (8) (Pelham Burn Collection)

£50-100

193

Two wooden multiple silk winders, comprising; a rectangular Spa work example painted with a bridge over a river with flowers to the reverse, 10.5cm x 5.8cm, and a poker work example, 8.8cm x 5.5cm. (2) (Pelham Burn Collection)

£50-80

194

Nine various tortoiseshell and similar silk winders, largest 9cm. (9) (Pelham Burn Collection)

£50-100

195

Six glass silk winders, comprising; a white glass multiple example, 6.5cm, an opaque glass example, 4cm, a black glass example, 3.5cm, a German reverse engraved example, a.f., 4.5cm, and a glass pole form multiple example, 5.5cm. (6) (Pelham Burn Collection)

£50-100

196

Ten mother-of-pearl silk winders, in various forms, largest 5cm. (10)

£40-80

197

Nine silk winders, including a Spa work floral painted example, 5cm, seven in bone and ivory, and a cardboard example. (9)

£40-60

198

No Lot.

199

No Lot.

Tambour Hooks

200

A good mid 19th century silver tambour hook, in three sections, the bulbous handle engraved with an oval silver cartouche and band, the cover screwing onto the bulbous handle, with incorrect hook.

£60-100

201

A good mid-19th century silver tambour hook, with tapering faceted agate handle, engraved silver lower section, with incorrect hook, 12cm.

£50-100

202

A 19th century agate handled tambour hook, the handle of faceted baluster form to a gilt metal mount and hook, 13.5cm.

£40-80

203

A 19th century ivory three section tambour hook, steel screw, lacking hook, 13cm.

£40-60

204

Two tambour hooks, comprising; an example with agate baluster handle and gilt mount, hook lacking, 8cm, and a gilt metal example with two screw hooks, in leatherette case, together with two additional hooks. (4)

£50-100

205

An ivory cased crochet or tambour set, the turned ivory case of cylinder form with roundel top, fitted with a central faceted steel handle encircled by screw top hooks.

£50-100

206

No Lot.

207

No Lot.

Knitting

208

An early 19th century chained knitting stick of simple curved form, dot worked to the face with flowers and geometric motifs, the chain with swivel and hook, 35cm.

£100-200

209

Four knitting sticks, comprising; a goosewing example, 19.5cm, a turned tapering example, 18cm, another with notched decoration, 20cm, and another in mahogany of tapering blade form, 22cm. (4)

£50-100

210

Two knitting sticks, comprising; a curved example with stepped top and scroll end, 20cm, and another in mahogany with inlaid geometric panels, of scroll form, 13cm. (2)

£60-100

211

Four 19th century knitting sticks, comprising; a goosewing example with brass terminal and initialled in metal pins "E.H.", 23cm, a baluster turned example, 21cm, a scroll form example in pine, 15cm, and another in fruitwood, 16.5cm. (4)

£50-100

212

A good chip carved knitting stick of curved form, inset with mother-of-pearl and bone panels, initialled "A.W." and dated "1852", and inscribed to one side "Forget Me Not", 16cm.

£60-100

213

Four 19th century knitting sticks, comprising; a goosewing example, 23cm, a stained scroll form example carved with anchor, cross and heart, 18cm, a turned tapering example, 19.5cm, and another, 16.5cm. (4)

£50-100

214

An 18th century knitting stick of scroll form, with neat chip carved and scratch decoration, initialled "S.T." and dated "1791", with a careful old repair, 20cm.

£80-120

215

Four 19th century knitting sticks, comprising; a goosewing example, 23cm, two simple turned examples, 17cm, and a scroll end example, 19.5cm. (4)

£50-100

216

A 19th century knitting sheath in the form of a lady's leg, with brass cap, 18cm.

£50-100

217

A 19th century mahogany knitting stick of curved form, with scroll end inlaid with bone diamond motifs and a heart initialled "B.A.", 18cm.

£60-100

218

Four 19th century knitting sticks, comprising; a crude goosewing example, 26cm, two turned examples, 16cm and 13cm, and a plain mahogany example of square section tapering to a hook, 19.5cm. (4)

£50-100

219

Two 19th century knitting sticks, comprising; a long example curved to one face and carved with heart, cockerel and geometric motifs, initialled to reverse "E.F.", 24.5cm, and another of curved scroll form, in mahogany inlaid with boxwood lines, 17cm. (2)

£50-100

220

Three 19th century knitting sticks, comprising; an elegant turned example, 23.5cm, a well-patinated goosewing example, 25cm, and an oak example with faceted ball terminal and carved decoration, initialled "H.W.", 17cm. (3)

£50-100

221

Two 19th century turned knitting sticks, comprising; an unusual barley twist example, dot initialled in brass "J.R.", with brass cap, 20.5cm and another, with bone line inlay, 17.5cm. (2)

£50-100

222

An unusual 19th century dated knitting stick, the terminal carved as a column below a curved blade, initialled "M.C.", inscribed with numerous year dates from 1812 to 1834, further initialled "H.R.", 25.5cm.

£50-100

223

Three 19th century knitting sticks, comprising; a fruitwood goosewing example with brass collar, 24cm, a curved mahogany example with inlaid name "E. Stokoe", 16cm, and a curved example with geometric carved terminal, initialled "A.L.", 17cm. (3)

£60-100

224

A 19th century knitting stick of rectangular section, tapering to each end and with chip carved and scratch decoration in geometric forms, 16cm.

£40-80

225

Four 19th century knitting sticks, comprising; an oak example, the curved face with carved and cut decoration, brass cap to end, 21cm, two goosewing examples, one initialled "M.B.", 24cm and 25.5cm, and a turned example, 14.5cm. (4)

£40-80

226

Two unusually long turned knitting sticks, one with cross hatch decoration, 27.5cm, the other with brass terminal over a boxwood band, 24cm. (2)

£80-120

227

A 19th century fruitwood goosewing knitting sheath, well-patinated with turned end, 26cm.

£40-80

228

Three 19th century knitting sticks, comprising; a turned sycamore example, 15.5cm, a large curved mahogany example, inlaid in pale wood with a diamond and heart, 22cm, and another with boxwood line decoration, 18.5cm. (3)

£80-120

229

Three 19th century knitting sticks, comprising; a fruitwood turned example, partly flattened to one side, 18.5cm, a chip carved spike form example, 18cm, and a curved example with chip carved decoration, 17cm. (3)

£80-120

230

Three 19th century knitting sticks, comprising; a turned example, 19cm, a curved mahogany example, named to an inlaid panel "E. Barratt", 15cm, and a dagger form example, inlaid with a whitewood panel edged with stringing, 16cm. (3)

£80-120

231

An unusually large mahogany knitting stick, of exaggerated flattened scrolling form with slot, chip carved terminal, 25cm.

£50-80

232

Four 19th century knitting sticks, comprising; a carved sword form example with stamped geometric motifs, 23cm, a turned fruitwood example, 19.5cm, a crude turned example, 14.5cm, and a carved example with cross and zig-zag decoration, 20cm. (4)

£50-80

233

An early 19th century chip carved fruitwood knitting stick, tapering to one end, 15cm.

£50-100

234

Three 19th century knitting sticks, comprising; a square section example with cross cut decoration, 19.5cm, a scroll form example carved with stylised flowers to the pointed end, 20.5cm, and a mahogany scroll form example with scroll end, 19cm. (3)

£50-100

235

Two 19th century knitting sticks, comprising; a teak goosewing example with turned end and brass cap, 26cm, and a twin prong mahogany example, with turned end, 16cm. (2)

£50-100

236

A whitewood Tunbridge ware knitting stick, the baluster handle with polychrome line painted decoration below three spikes, 12.5cm.

£100-200

237

A collection of bell shaped and other knitting needle gauges, an 'MP' Handy Guide for Knitting and Crochet, together with vintage knitting needles, in original packaging. (qty)

£20-40

238

A good early 19th century ivory 'knitting nancy', the handle of baluster form below three spikes, one with old repair, one slightly re-shaped, 11cm.

£100-150

239

An 18th century horn wool hook, the lantern carved "A.L.L." and with dot and cross decoration, lacking suspension, 5cm.

£50-100

240

Four 'knitting nancys' for children, all figural, three painted, one with applied print, including a soldier, largest 13.5cm. (4) (Pelham Burn Collection)

£30-50

241

Two 'knitting nancys' and two other items for children, comprising; a figural knitting nancy, another with bead pigtails and with a needle figural, a figural thimble stand, and a figural thimble case, all painted, largest 14cm. (4) (Pelham Burn Collection)

£30-50

242

A straw-work skein or knitting needle case of rectangular section, well-decorated with flowers in the mosaic style, 17.5cm.

£40-80

243

A continental silver wool ball holder, the adjustable wrist band linked to a filigree and spiral work wool ball holder, hinged and with push catch, ball 7cm diameter.

£100-200

244

No Lot.

245

No Lot.

Clamps

246

Two sewing clamps, comprising an ivory example, the rectangular frame with finial and mounted with a reel, 8cm, and a steel clamp with hook, part lacking, 9cm. (2) (Pelham Burn Collection)

£30-50

247

A rosewood sewing clamp, the turned frame supporting a circular pincushion with velvet dome, 13cm high, 8cm diameter.

£30-50

248

Two sewing clamps, comprising; an ivory example with turned frame supporting a circular carved frame pincushion, 9.5cm, and a wooden winding clamp, the frame with careful old repair, 17cm. (2)

£40-60

249

A blacksmith made 18th century steel sewing clamp, and another pincushion clamp, the first with 'C' form frame below a pedestal supporting a domed pincushion, 15cm, and a mahogany cased rectangular pincushion, the base incorporating a folding steel clamp with heart-shaped terminal, 14.5cm wide.

£40-60

250

No Lot.

251

No Lot.

Needlecases, Needlebooks, Needle Packets & Cases

252

Nine needlecases, including a bone furled umbrella example, four metal examples, a vegetable ivory example, and two wooden examples. (9)
£30-50

253

Five needlebooks and three thimble cases, comprising three leather examples, a Morris and Yeoman's Synoptical card needlecase, worn, another for A. G. Bayliss and Sons, Redditch, and three vegetable ivory acorn form thimble cases. (8)
£40-60

254

A large quantity of "Mitrailleur" metal cylinder needlecases, of varying forms. (qty)
£20-30

255

A pair of 19th century ivory needlebook covers, pierced with a design of leaves and roundel form flowers, 5.3cm x 4cm. (2)
£20-30

256

An 18th century gilt metal needlecase of oval section and tapering form, decorated with harlequin style figures and putti firing arrows, 8.5cm.
£100-150

257

An ivory pea pod needlecase, 9cm.
£60-100

258

An ivory needlecase in the form of a quiver, with two recesses to one side and one only of two flower panels to fit, with gilt rim and glass, 9.5cm.
£30-40

259

An early 19th century two colour gold cylinder needlecase, of ribbed form with flowerhead ends, 5.2cm.
£100-150

260

A carved wooden figural standing needlecase, Tyrolean, in the form of a young man in traditional costume.
£40-60

261

Four needlecases/bodkin cases, comprising; three early 19th century silver examples of oval section and tapering form, with engraved decoration, one marked for Joseph Taylor, largest 8.2cm, and an ivory example of tapering cylinder form, in the stacked brick pattern, 10.5cm. (4)
£100-200

262

A good late 18th century tortoiseshell and gold pique cylinder needlecase, decorated with insects and flowers, the interior metal core bearing a mark, .5cm.
£200-300

263

A good French silver gilt and blue enamel needlecase, circa 1880, fashioned in the form of a slender neo-classical urn, the lower body decorated in blue enamel to both sides with a classical woman seated and looking into a hand mirror within decorative blue enamel friezes, 8.5cm.
£150-250

264

A fine cut and raised card needle book, each side cut and raised with flowers and leaves, false silk bow hinges and matching tie, the boards edged in gold foil, complete with flannel, 5.5cm x 4.2cm.
£50-100

265

Needle packet boxes, comprising; "The Alexandra Needle Case, folding sides, box centre, floral prints and scraps, 6cm square, and a large example decorated with colour prints and scraps, 8cm square. (2)
£40-60

266

A needle packet box, pincushion lid, folding sides decorated with colour prints of fashionable young girls, each with a dove, gold foil interior complete with a selection of tools, 8cm square, 12cm high, and a floral painted wicker sewing pannier for a child or doll, 13cm. (2)
£40-80

267

A coiled metal needlecase with Stanhope, the coiled wire cylinder surmounted by a 'telescope' Stanhope (6 views - A Memory of Stratford), with an old handwritten sale ticket "37/6d".
£30-50

268

A fine Palais Royal mother-of-pearl needlecase, carved and pierced as a figure of a young man in a peaked cap and wearing a tail coat, his hands in his pockets, striped trousers, 10cm, in an old neat cardboard box with painted circular lid, label for "C. Packer, Jewellery, 76 and 78 Regent Street".
£200-300

See back cover illustration

269

A gilt brass Avery needlecase, The Quadruple Golden Casket, butterfly on leaf, 7cm.
£40-60

270

A good tortoiseshell needlepacket case of knife box form, graduated internal bone divider, purple cloth lining, 4.7cm high.
£80-120

271

Twelve figural wooden needlecases for children, all with painted decoration, including a pair, largest 8cm. (12) (Pelham Burn Collection)
£40-80

272

A varied selection of needle packets, most with contents. (qty) (Pelham Burn Collection)
£20-40

273

Six small format cylinder needlecases, comprising; a Cantonese carved example, a mother-of-pearl tapering example, three bone and ivory examples, and a wooden example, 7.2cm. (6) (Pelham Burn Collection)

£40-80

274

Four cylinder needlecases, comprising; two bone examples with slit and dot pierced decoration, another, floral painted, s.d., and a turned wooden example, 9cm. (4) (Pelham Burn Collection)

£40-60

275

Three needlebooks, comprising; a Spa work example, each board with an oval panel of a woman in traditional costume within a carved surround, 7cm x 5cm, a tortoiseshell and pique work example, re-lined, 8.5cm x 7cm, and a Mauchline ware example (Grand Parade, Eastbourne), 8.8cm x 5.5cm. (3) (Pelham Burn Collection)

£50-100

276

Five scarce advertising cardboard needlebooks, all of bottle form, comprising; Goodall Yorkshire Relish/Corona Orangeade/Holbrooks Fruit Sauce/Vimto/Halford Leicestershire Table Sauce (Boston, Mass.), last on a pincushion, largest 9cm. (5) (Pelham Burn Collection)

£50-100

277

No Lot.

278

Three cardboard needlepacket boxes, comprising; a rare example of standing form and square section, the sides with Baxter style colour prints, lifting off to reveal an open compartment and pincushion, 6cm high, a Baxter print needlepacket box, and a mirror top and scrap box with concertina needle packet card, 6.2cm. (3)

£40-80

279

A mother-of-pearl and abalone shell needle packet case of rectangular form, red silk lined interior, 5cm x 3.5cm.

£40-60

280

A reverse printed pictorial glass needlebook and a similar tape measure, the needlebook 'Folkestone from the West Cliff', mirror back, 6.2cm x 3.6cm, the tape measure of circular form "Sefton on the Naze From the Sea", mirror to reverse, complete tape printed in inches, 3.8cm. (2)

£50-100

281

A paper and card needlebook and a Synoptical Needlecase, the first in mint condition, the cover with colour Christmas print or two robins, "The Compliments of the Season", gilt foil border, mint flannel, chequer board back, 9cm x 6.4cm, and a "Baggalays Universal Synoptical Needle Case, London", the blue card sleeve with a coaching scene "Compliments of the Season", the reverse with robin, etc., slight split, 9cm x 5.5cm. (2)

£40-80

282

Four paper and card needlebooks, comprising; a velvet and beadwork example "A Present From the Alexandra Palace", flannel mothed, 9cm x 7cm, a velvet and beadwork example, near mint, 9cm x 7cm, another with a three quarter length print of a young woman, 9cm x 6cm, and a needle packet book, wallet form with a colour print of a young girl with sheaf of corn, 5.5cm x 8cm. (4)

£50-100

283

Two cardboard advertising needle packet books, both in the form of a bottle for "S.C.W.S., Shieldhall, Essence of Coffee ...", both with needle packet and needles, one unopened, 15cm. (2)

£30-50

284

A brass Avery needlepacket case, "Beatrice", of concertina form, 4.5cm x 2.6cm, and an Abel Morrall's sharps needle packet case, white metal, 4.5cm x 2.2cm. (2)

£40-60

285

Millward & Sons, Redditch: A gilt brass needlepacket case, of fan form, four internal colour printed compartments, 7.2cm.

£40-80

286

A good beadwork needlebook, the cover worked with a sprig of roses on a blue/turquoise ground, within a geometric border, the reverse with a trellis design, complete with flannel, near mint, 7.5cm x 6cm.

£40-80

287

Six bone and ivory needlecases, comprising; a furled umbrella with Stanhope (New Pier and Beach, Folkestone), 11cm, a cylinder needlecase with Stanhope (6-view, including Happy Walley), 9.2cm, a Cantonese carved and tapering example, and three others. (6)

£50-100

288

A gilt brass nanny brooch, the circular spangle in leaf scroll mount needle cylinder, stamped "D.R.G.M.", 4.7cm.

£30-50

289

A gilt brass nanny brooch, the circular spangle in scroll mount, needle cylinder stamped "G.E.S.", 5cm.

£30-50

290

Three needlebooks, comprising; an engraved mother-of-pearl example, both sides engraved with a flowering basket, 5cm x 3.8cm, another in ivory pierced with leaves, 4.5cm x 3.5cm, and a plain mother of pearl example, 4cm x 3cm. (3)

£40-80

291

Six needlebooks, comprising; a floral painted Spa work example, 7.5cm x 5cm, a papier-mâché example, one side with wire, mother-of-pearl and abalone shell floral decoration 5cm, a paper and coloured print example, 6.5cm, a Holbrook & Co. cardboard example, a plush velvet example, and a leatherette example decorated with oval colour prints. (6)

£40-60



1



5



6



7



9



10



11



13



17



18



18



22



24



26



26



33



28



28



38



38



36



36



36



36



36



42



43



45



39



47



51



52



55



56



57



58



59



60



62



64



65



67



77



78



79



80



81



84



85



88



89



92



94



94



96



96



97



98



99



100



102



104



105



106



107



108



109



110



111



112



113



114



115



118



119



121



122



123



124



125



126



127



128



131



131



133



134



135



135



136



136



137



138



139



140



141



143



144



145



147



148



154



155



156



157



160



161



162



163



163



166



171



175



177



178



181



182



183



184



185



189



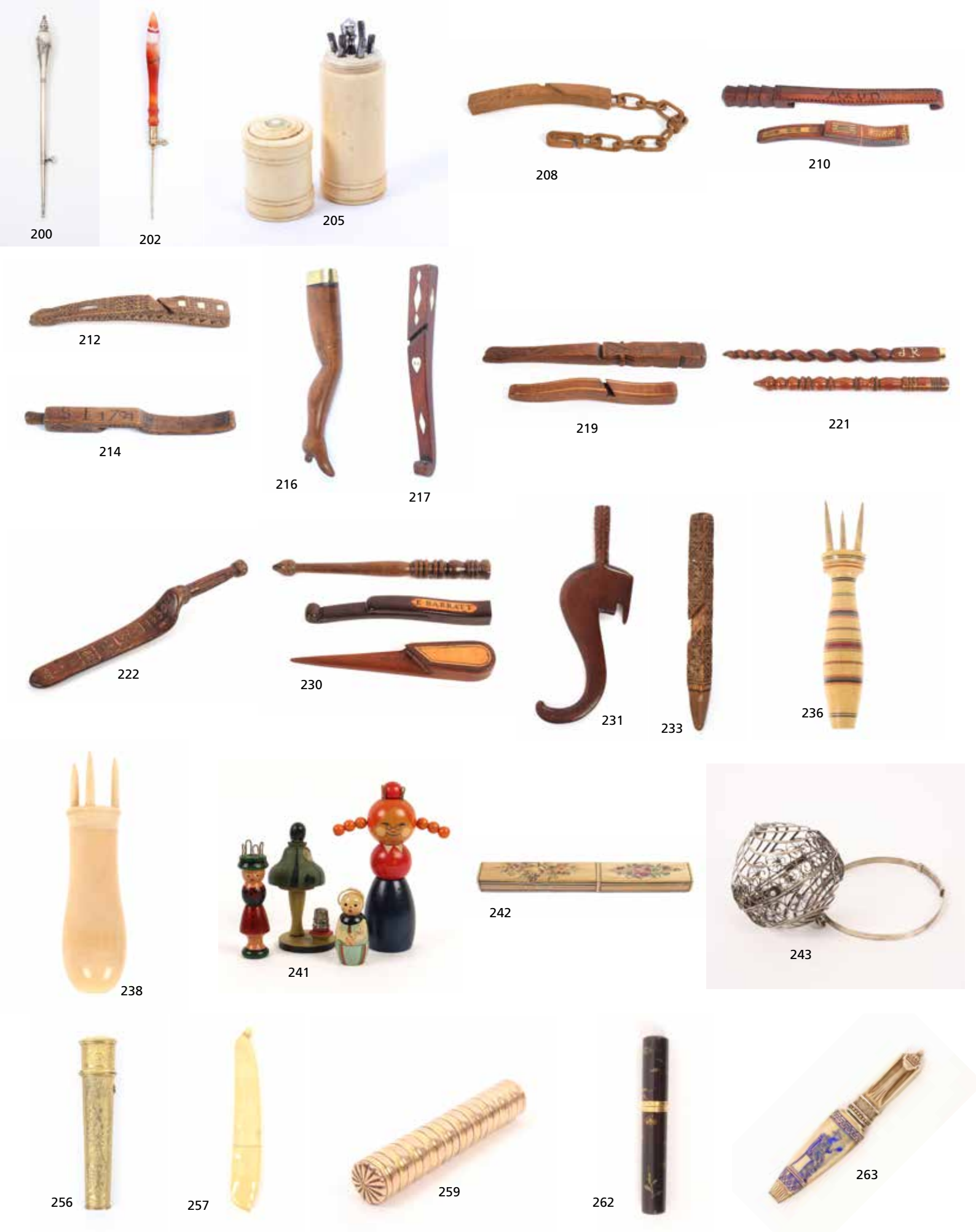
193



194



195



200

202

205

208

210

212

214

216

217

219

221

222

230

231

233

236

238

241

242

243

256

257

259

262

263



264



266



270



271



276



278



280



281



285



286



287



289



292



293



294



296



298



299



301

302



306



310



312



313



317



320



326



327



330



331



341



347



354



358



359



362



365



366



376





405



406



409



410



411



412



413



414



416



418



419



429



430



433



436



437



439



447



449



450



451



459



461



463



464



465



467



468



469



470



476



481



484



486



497



521



524



527



531



536



540



543



548



549



550



552



555



556



557



559



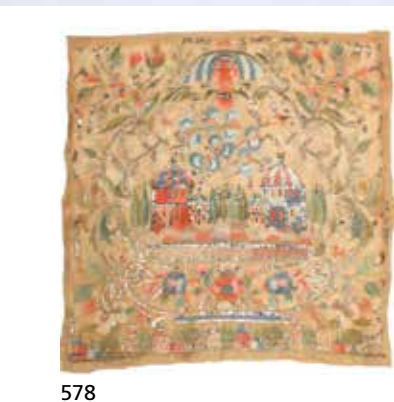
562



568



573



578



579



586



591



596



597



598



601

292

A matched pair of Dieppe ivory carved figural needlecases, the fisherwoman in traditional dress and holding two fish, the fisherman slightly larger and holding a single fish, unscrewing at the waist, both on hatched seal bases, 6.8cm and 7.5cm high respectively. (2)
£300-400

293

A rare 19th century continental porcelain figural needlecase, in the form of a swaddled baby, in blue printed swaddle with gilt ribbon ties, gilt metal clasp, 8cm.
£150-200

294

An unusual carved bone and inlaid needlecase in the form of a butterfly with black dot and abalone shell decoration, 7cm.
£200-300

295

Three bone and ivory needlecases, each as a furled umbrella, all with Stanhope apertures (lacking), one with shortened tip, 12cm. (3)
£40-60

296

A fine cut and raised paperwork needlebook, the cover with a flower and leaves, red leather spine, the reverse with a colour print of flowers, gilt foil edges, pink ribbon, internal flannel, mint, 5cm x 3.8cm.
£30-50

297

Three bone and ivory umbrella form needlecases, one part red stained, each with a Stanhope (Hastings 6 views, Tunbeau de Napoleon, Giants Causeway 4 views), two with clenched fist handles, largest 12.5cm. (3)
£60-100

298

A Palais Royal needlecase in the form of a quiver of arrows, with engraved decoration and gilt mount, oval pansy mark in gilt and enamel, 8cm.
£50-100

299

A very rare white glass cylinder needlecase, decorated in green and red with flowers and inscribed "From the Gt. Exhibition 1851", cracks, 8.5cm.
£30-50

300

Two ivory needlecases, comprising; a rectangular example inset to one side with a verre eglomise panel of a flower, gilt ferrule, 10cm, and another as a furled umbrella with Stanhope (Souvenir of Great Malvern - 6 views), 13cm. (2)
£50-80

301

Four needlecases, comprising; two continental examples, with scroll and leaf decoration, one in silver and the other silver gilt, 7.5cm, a turned ivory example on circular foot, 5.7cm, and a cylinder form needlecase in enamel decorated with red and blue flowers, 6.5cm. (4)
£60-100

302

A 19th century carved ivory cylinder form figural needlecase, the cylinder body with screw-off cover in the form of a baby, with bib and bonnet, 8.5cm.
£200-300

303

No Lot.

304

No Lot.

Scissors

305

A pair of cased desk scissors, steel tapering blades stamped "Townsend, Hull", gilt metal dolphin arms to oval lops, in a fitted leather case, 20cm.
£50-80

306

A pair of 19th century French steel scissors, indistinctly marked, the arms pierced and engraved with birds below circular loop with fancy tops, 9.5cm.
£40-80

307

Two pairs of scissors and three silver scissors sheaths, comprising; a pair of 18th century steel scissors with filed arms to oval silver loops, 7.5cm, a pair of steel scissors, 9.5cm, and three silver scissors sheaths, all with decoration, largest 4.7cm. (5)
£50-100

308

Three pairs of 19th century and later scissors, comprising; a pair with silver handles, 7cm, and two delicate steel pairs. (3)
£40-60

309

Three pairs of 19th century steel scissors, comprising; two pairs with emperor and empress oval medallions, 16cm, and a larger pair. (3)
£20-40

310

A pair of early 19th century Dutch scissors, steel blades, with traces of dot work decoration to silver mounted arms with figural arms and filed circular loops, complete with silver sheath on chain, 15cm.
£100-200

311

Three pairs of scissors, comprising; an elegant steel pair with filed loops, 8.5cm, with a floral painted silk sheath, another pair stamped "Geminel" with elegant loops, 9cm, and a plated set in the form of a stork, 10cm. (4)
£40-80

312

A pair of Palais Royal mother-of-pearl handled scissors, diamond tapering steel blades, the elaborate pierced arms with flowerheads and winged griffins below oval loops with star cut borders, chips to base of one handle, 11.5cm.
£100-200

313

A fine pair of Palais Royal mother-of-pearl handled scissors, tapering steel blades, floral gilt mounts, the arms engraved and pierced with flowers in jardinières flanked by birds below oval feathered loops, blade points not quite meeting, 10.5cm.
£150-250

314

Five pairs of miniature scissors, three of stork form and partially gilded, largest 4cm, a plain pair, 3.8cm, and another pair in bone, 3cm. (5)

£30-50

315

Three scissors sheaths, early 19th century, comprising; a tortoiseshell and silver mounted example, with shield cartouche, s.d. to tip, 7.8cm, a silver example, initialled, 7cm, and another with engraved decoration, marked "I.T." for Joseph Taylor, 7cm. (3)

£40-80

316

Four scissors sheaths, comprising; a painted vellum example with oval panel of fleur de lys, 9cm, a continental silver example decorated scrolls, 6.2cm, a silver example with bright cut decoration, 7.7cm, and a gilt tooled leather example, 9cm. (4)

£40-80

317

A good pair of Georgian silver ribbon threader scissors, of stork form, one loop on a bird's foot, Birmingham 1809/1810, by Joseph Willmore, 9.5cm high.

£100-200

318

Eight pairs of steel button-holing scissors, including examples by G. Buteft & Co., H.S.B. & Co., Germany, Wingfield & Co., and two 'Buttericks Magic Cutter' examples. (8)

£40-80

319

Eight pairs of steel button-holing scissors, including examples by Simmons, OK (USA), Weiss, Oxford, Rodgers & Sons, M. H. & Sons, Sheffield, Clauss Freemont and Wiss (USA), largest 14cm. (8)

£30-50

320

Five pairs of scissors, comprising; two pairs in steel with gilded overlay patterns, a button-holing pair by G. W. Danlgreen, 10.2cm, and a pair by H. W. Goderen, 13cm and three pairs of steel scissors, 11.5cm (Croisdaif), 14cm and 17cm, with sheath. (5)

£50-80

321

Three pairs of silver handled scissors, comprising; a pair with floral loops and arms, with sheath, 10cm, a pair with trellis and 'C' scroll handles, 8.5cm, and a pair with oval loops and leaf scroll arms, 7.8cm. (3)

£50-100

322

Four pairs of silver handled scissors, comprising; an unusual pair of triple bladed grape scissors with fruiting vine decoration, 13cm, a pair of desk scissors, 15.5cm, two smaller pairs, 10cm, and another pair with cherub mounted handles, 10cm. (4)

£50-100

323

Six pairs of stork form scissors, some partially gilded, all approximately 8cm to 10cm. (6)

£20-40

324

Four pairs of steel stork form scissors, comprising; an unusually large pair, 16.5cm. (4)

£40-80

325

Seven pairs of scissors, comprising; two stork form examples, both Dutch, largest 10cm, two pairs of button-holing scissors, one pair part gilded by Mappin & Webb, 9.6cm, the other pair by Salt & Son, 10cm, and three steel decorative pairs, largest 9cm. (7)

£50-100

326

A fine pair of silver handled sewing scissors, oval section tapering blades, the arms cast as seated dogs over rectangular floral cast loops with an engraved silver sheath, 10cm.

£50-100

327

Two pairs of silver handled scissors with sheaths, comprising; a pair with fruiting vine arms to circular loops, floral and spiral pattern sheath, 9.5cm, and a pair with leaf scroll arm to oval decorated loops with leaf scroll sheath, 10cm. (2)

£50-100

328

A pair of late 18th /early 19th century Dutch silver handled scissors, the arm as a vase of flowers below wavy oval loops, 14.5cm.

£40-60

329

Three pairs of steel scissors with fancy file decorated loops and arms, all with gilt or gold dot decoration, 11.5cm and 8.7cm. (3)

£40-80

330

An unusual pair of steel scissors, 18th century German, the arms fret cut in the form of standing stags over oval loops, 11.5cm.

£40-80

331

A pair of late 18th/early 19th century Italian steel scissors, the arms pierced and engraved with birds and flowers below oval leaf bordered loops, one arm inscribed to alternate sides "Ricordo Di Veiezia", 13cm.

£50-100

332

A pair of late 18th/early 19th century Italian steel scissors, the arms engraved and pierced with birds and scrolls, with leaf bordered oval loops, stamped "R.T.", 11.7cm.

£40-80

333

Three pairs of steel scissors, two pairs with file cut decorative arms and loops, largest pair stamped "Mechi", 14.5cm, and another pair with file cut scroll arms below plain oval loops, by Brockes & Crookes, 11.5cm. (3)

£40-60

334

Five pairs of scissors, comprising; a part gilded stork set, 9.5cm, a pair with the arms shaped and engraved as a swan, 7cm, and three elegant steel pairs, largest 10cm. (5)

£40-60

335

Four pairs of steel scissors, comprising; a pair with thistle form arms to file decorated gilded loops, stamped "I. West", 9cm, another pair with spiral decorated arms, 9cm, another pair with file decorated arms, stamp indistinct, 14cm, and a pair of elegant scissors with curved blades, 10.8cm. (4)

£40-60

336

Five pairs of desk scissors, comprising; a jewelled pair, part gilded, 16cm, a pair with brass handles and decorated brass sheath, 14cm, and three steel pairs with decorated arms. (5)

£40-80

337

Eleven pairs of small size scissors, steel and plated, various, largest 10.5cm. (11)

£20-30

338

No Lot.

339

No Lot.

Chatelaines

340

A 18th century gilt metal frosted thimble case for a chatelaine, hinged cover with suspension ring, 3.5cm, together with a small steel stileto. (2)

£50-100

341

A delightful silk embroidered chatelaine, the moon shaped pincushion, fan form needlebook and thimble bucket all painted and embroidered with flowers and leaves, blue silk ribbon bars and hanging ties, 29cm x 17cm approximately.

£100-200

342

A brooch form American silver chatelaine, the curved brooch mounted with initialled acorn form thimble case, engraved "Mother Dec 25/95", a silver leaf scroll decorated needlecase and a silver mounted strawberry emery, two chains vacant, brooch, 6.5cm. (Pelham Burn Collection)

£60-100

343

A steel chatelaine, the pierced clip with four chains to a ball form tape measure with printed tape, a pair of scissors, a thimble bucket with thimble, and a disc form pincushion, 35cm.

£50-100

344

An etched steel chatelaine, with five chains from a crescent form bar to a swivel notelet, the covers with birds and flowers, a cylinder needlecase lacking screw cover, a pair of folding safety scissors, a pencil, a disc form pincushion and a ball form tape measure, tape within, 38cm, with an old receipt, Walker, Barnett & Hill, 1983.

£100-200

345

A steel chatelaine, the large pierced clip with 'C' scrolls and shell, with five chains to a rectangular pin box, an acorn form pincushion, a horseshoe form notelet, a pair of safety scissors a letter knife, and a thimble bucket, 36cm.

£100-200

346

A steel chatelaine, the pierced tear shaped clip with six chains to a ball form tape measure, tape within, an acorn pincushion, a pencil, a pair of folding safety scissors, and a thimble bucket, needlecase lacking, 32cm.

£80-120

347

A good cut steel chatelaine, French, mid 19th century, the decorative oval clip with three elaborate chains to a further panel with six chains to a swivel notelet, a horseshoe, folding safety scissors, pencil, rectangular pincushion and a thimble bucket, 30cm.

£100-200

348

No Lot.

349

No Lot.

Display Cases and Cabinets

350

Two pale blue Dewhurst reel counter cabinets, each of three drawers with advertising, 31cm x 22.5cm x 14cm. (2) (Pelham Burn Collection)

£30-50

351

A late 19th/early 20th century haberdashery cabinet in oak, fitted with six long drawers, ebonised handles, with brass mounts, on a plinth base and block feet, 72cm x 48cm x 58cm, together with a companion two drawer cabinet. (2) (Pelham Burn Collection)

£200-300

352

Three wall hanging display cabinets, comprising; an oak example, 63cm x 33cm, another, 45cm x 39cm, and a mahogany example, 55cm x 47.5cm. (3) (Pelham Burn Collection)

£50-100

353

Three shield shaped mahogany wall mounting thimble display cases, each with a hinged door, one with line inlay to frame, largest 28cm x 29cm. (3)

£50-100

354

A thimble display cabinet of wall mounting form, the door crossbanded and edged in boxwood, fitted five shelves with velvet backing, 37cm x 32cm.

£100-200

* This cabinet appears to be the companion cabinet sold Phillips Midlands, 13th December 1990, Lot 249, from the collection of Dorothy R. L. Howell, which housed the Queen Elizabeth I thimble, subsequently sold for a world auction record. The Howell cabinet is illustrated in "Thimbles", Edwin F. Holmes, opposite page 38.

355

No Lot.

356

No Lot.

Thimble Cases and Shoes

357

Three thimble cases, comprising; a vegetable ivory example in the form of an acorn, another of egg form, and another egg form example, one with child's silver thimble, largest 5.5cm. (4)

£40-60

358

A fine pair of thimble shoes, probably 19th century, in various silks embroidered and applied with metal coil work and sequins, scroll toes, 6.5cm. (2) (Pelham Burn Collection)
£50-100

359

Four thimble shoes and slippers, comprising; a leather example with tooled oval titled "Souvenir" and incorporating a needlework panel, 7cm, a tooled blue leather example, 4.2cm, a maroon velvet slipper, 6cm, and a floral and geometric beadwork example, 9cm. (4) (Pelham Burn Collection)
£50-100

360

Five thimble shoes and slippers, comprising; a plush example, a velvet and pin stuck example, a silk example incorporating a needlebook to sole, and a high heeled shoe in patterned fabric, incorporating a pincushion, largest 9cm. (5) (Pelham Burn Collection)
£50-100

361

Five thimble shoes and slippers, comprising; a wooden and leather example, a material example with needle pad to inner sole a carved wooden example, a silk example with inner needle sole, and a green glass example, largest 9.5cm. (5) (Pelham Burn Collection)
£40-80

362

A pair of thimble slippers and two others, the pair embroidered in metal threads with flowers and pin stuck to the edges, one with flannel, 9cm, a small embroidered silk example with red needle flannel inner sole, 5.5cm, and a glass example with painted laces, with thimble, 6cm. (4) (Pelham Burn Collection)
£50-100

363

Four thimble shoes, comprising; a black leather example with tooled decoration, wooden sole and heel, a papier-mâché example incorporating a pincushion, a small leather and wood clog, and another, possibly in carved coal, largest 9cm, all with thimbles. (4) (Pelham Burn Collection)
£40-80

364

Six thimble shoes and slippers, comprising; two glass examples, a silk and beadwork example, two silk examples, and another in mixed material, with inner needle sole, largest 8cm. (6) (Pelham Burn Collection)
£50-100

365

A good ivory thimble box, with thimble, in the form of a Swiss chalet, mica windows, pierced fence and balcony, the roof with bell tower, the roof hinging to reveal the apparently original ivory thimble, 4cm x 5cm x 8cm.
£80-120

366

A combination silver thimble, tape measure and scent bottle, the thimble with a shield cartouche and floral frieze screwing on to a cylinder with similar engraved decoration containing a tape measure, printed in inches with leaf border, commencing at 1 1/2 inches, the thimble unscrewing to reveal a blue glass scent bottle of faceted tapering form, stopper lacking, 5.5cm.
£250-350

367

A collection of leather, cardboard and other thimble cases, including a Georgian red leather example of tapering form. (qty)
£30-50

368

A collection of thimble cases, comprising; a leather example, two book form examples, two brass egg form examples, a wooden acorn form example with line painted decoration, an unusual leather covered example as a dice, a Mauchline ware example "Promenade Pier, Isle of Man" and two pairs of thimbles, fitted as knitting needle protectors, and four various thimbles. (qty)
£40-80

369

No Lot.

370

No Lot.

Thimbles

371

A collection of "Just a Thimble Full" measures, comprising sixteen metal examples, five slag glass examples, and a porcelain example. (22)
£30-50

372

Forty silver or white metal thimbles, some with decorative borders. (40)
£80-120

373

Forty silver or white metal thimbles, some with decorative borders. (40)
£60-100

374

Forty silver or white metal thimbles, some with decorative borders. (40)
£80-120

375

Forty silver or white metal thimbles, some with decorative borders. (40)
£80-120

376

Eleven white metal thimbles, with 'jewelled' or similar borders. (11)
£50-100

377

Fifty white metal thimbles, some with decorative borders. (50)
£50-100

378

Sixteen Mexican white metal thimbles, some set with coloured stones. (16)
£30-50

379

Nine white metal thimbles, all with enamel decoration, in the Dutch Delft style. (9)
£60-100

380

Seventeen American thimbles, including three enamel commemoratives, the rest in white metal. (17)

£40-80

381

Twenty two white metal thimbles, all with stone or similar tops, including five bearing marks. (22)

£100-150

382

Ninety brass and related excavated thimbles, including examples from the 16th century onwards. (90)

£40-80

383

Four scarce plated thimbles, comprising a "Little Dorcas" with 'C.H.' mark, two "Doris" and a "Dura". (4)

£60-100

384

Seventeen recent silver and other Royal commemorative thimbles, including four enamel examples. (17)

£50-100

385

Ten silver and other Royal commemorative thimbles, including a modern Windsor Castle, EIRR crown, Westminster Abbey, and an enamel example for the Silver Jubilee. (10)

£50-100

386

Six modern silver thimbles, in mint condition, of variant design, including a stone top, in a fitted case. (7)

£30-50

387

Fifty one aluminium and other advertising thimbles, with slogan borders. (51)

£30-50

388

Thirty eight miniature or small-scale thimbles, including charms, 20th century. (38)

£30-50

389

Ten bone and ivory thimbles, together with three vegetable ivory examples, two with decorative borders. (13)

£50-100

390

Twenty seven Wedgwood thimbles, including coloured examples. (27)

£30-50

391

Twenty seven Wedgwood thimbles, comprising twenty five blue ground, a pink and a lilac, latter two cased. (27)

£30-50

392

Seven thimbles with inscribed borders, "The Treasure" x 2, "Her Majesty's Thimble, England", one holed, "The Boudoir" and two others. (7)

£30-50

393

Seven "Dreema" thimbles, mostly variant. (7)

£30-50

394

Twenty five "Dorcas" and patent thimbles, including Rd. examples, mostly variant. (25)

£40-80

395

A Worcester puce mark thimble, painted with a bird and flowers between gilt lines.

£30-50

396

Brass and plastic thimbles, comprising; approximately two hundred plastic advert and slogan thimbles, mainly American, together with plastic thimble nails, rings, etc., and a quantity of brass thimbles (approx. 250). (qty)

£20-40

397

Thirty six black mark hand painted Royal Worcester thimbles, mostly signed, including fruit, birds and flowers. (36)

£30-50

398

A quantity of modern mainly ceramic thimbles, comprising; an alphabet set, seven modern Spode, Worcester, together with novelty and cloisonné thimbles. (qty)

£30-50

399

Thirty six Royal Worcester black mark hand painted thimbles, including birds, fruit and flowers, most signed. (36)

£40-80

400

Thirty six Royal Worcester black mark hand painted thimbles, including birds, fruit and flowers, most signed. (36)

£40-80

401

Thirty six Royal Worcester black mark hand painted thimbles, including birds, fruit and flowers, most signed. (36)

£40-80

402

Thirty six Royal Worcester black mark hand painted thimbles, including birds, fruit and flowers, most signed. (36)

£40-80

403

Twenty six Royal Worcester porcelain thimbles, all black mark, most signed, together with four Sylvac thimbles in original boxes, two modern enamel thimbles and another in case. (33)

£40-60

404

Two silver thimbles and a leather thimble case, one thimble with an engraved frieze and vacant cartouche and fitting into a leather thimble case, inscribed in gilt "May Day 1877", the other thimble with initialled cartouche "M.C.", within a well-engraved border of oak leaves and acorns. (3)

£50-100

405

A good early 19th century English porcelain thimble, painted with insects and flowers over a gilt leaf border between gilt lines, in case. (2) **£200-300**

406

A 19th century Russian silver and niello work thimble, decorated with stylised leaves, mark to rim. **£80-120**

407

Two thimbles and a compendium, comprising; a mother-of-pearl Palais Royal example, lacking pansy motif, gilt wire double border, a carved bone example, cracked, and a continental white metal thimble compendium, hammered finish, hardstone thimble top, internal reel and needlecase. (3) **£50-100**

408

A 14k gold thimble, plain frieze initialled "A.L.B.", over a beaded rim. **£60-100**

409

Three early Hispano Moresque bronze thimbles, circa 1500, comprising; an example with pointed apex, dot punched sides over script frieze, with dot decoration, 4.7cm, another with open top and dot punched rim, 1.8cm, and another of squat form and considerable weight, 2.5cm. (3) (Pelham Burn Collection) **£100-200**

410

Three early Hispano Moresque bronze thimbles, circa 1500, comprising; an example with pointed apex, dot punched sides over a script frieze enclosed by lines, 5cm, another smaller, the apex plain, 3.5cm, and another with plain apex, the script frieze within raised border bands, 4cm. (3) (Pelham Burn Collection) **£100-200**

411

A good English porcelain thimble, circa 1830, the body painted with oval garlands enclosing flowers and with further flowers to the white ground, gilt line top, the frieze with gilt dot order, 2.2cm, in a red leather and green velvet lined case. (2) (Pelham Burn Collection) **£150-250**

412

A good late 18th/early 19th century copper and enamel thimble, French or English, copper top over vertical bands of variant coloured enamels over a copper rim, 2.2cm. (Pelham Burn Collection) **£100-200**

413

A good late 18th/early 19th century copper, gilt and enamel thimble, gilt metal top, the white ground decorated with flowers over a random scroll border in iron red, copper gilt rim, 1.7cm. (Pelham Burn Collection) **£150-250**

414

An unusual enamel thimble, probably South Staffordshire, the top pierced and in white enamel over apple green sides reserved with two panels of flowers outlined in gilt and interspersed with gilt dots, 2cm. (Pelham Burn Collection) **£100-200**

415

Four thimbles in natural materials, comprising; a mother-of-pearl example, the plain frieze within raised bands, 2.5cm, an ivory thimble with milled band to border, 2.6cm, another with feather band to frieze over a turned rim, 2.6cm, and an ivory thimble carved with birds, 2cm. (4) (Pelham Burn Collection) **£100-200**

416

An unusual silver thimble, the frieze with a named view of Windsor Castle over a faceted rim, 3cm. (Pelham Burn Collection) **£150-250**

417

Three silver souvenir thimbles depicting Windsor Castle, Osborne House, Isle of Wight and Crystal Palace, all with damage. (3) (Pelham Burn Collection) **£50-100**

418

A 17th century English silver thimble, with a plain rectangular panel, with hatched initials "I.T." divided by a star, single maker's mark "G". (Pelham Burn Collection) **£150-250**

419

A 17th century silver thimble, the plain frieze within lines and inscribed "Loweisa"?, beside a heart, within hatched band, wear and damage, 2.2cm. (Pelham Burn Collection) **£80-120**

420

A late 17th century silver thimble, of tall form, the frieze possibly with inscription between lines, general wear. (Pelham Burn Collection) **£80-120**

421

Two scarce silver thimbles relating to the Statue of Liberty, the first tall with the statue to the frieze and body, above the date 1876, the remainder of the frieze with skyline of New York, four small marks to reverse, 2.6cm, and another the statue applied in gilt, the plain frieze dated 1986, over a reeded bound frieze, 1.7cm. (2) (Pelham Burn Collection) **£50-100**

422

Three heavily decorated silver thimbles, with scrolling leaves and flowers in the Indian style, largest 2.5cm. (3) (Pelham Burn Collection) **£80-120**

423

Six silver thimbles, with 'cable' or applied rims and friezes, largest 2.5cm. (6) (Pelham Burn Collection) **£40-80**

424

Ten brass thimbles, with inscribed friezes, including Friendship/Reward For Merit/Remember Me/Forget Me Not/From a Friend/Ever Dear/Good Luck/Regard/Sincerity/A Keepsake, largest 2.1cm, smallest 1.5cm. (10) (Pelham Burn Collection) **£40-80**

425

Fifteen brass and copper thimbles, with inscribed friezes, advertising, places, etc. (15) (Pelham Burn Collection) **£30-50**

426

Eight silver thimbles, with inscribed friezes, Ever Dear/Regard/Remember Me/From a Friend/Thou Absent Ever Dear/Forget Me Not/From A Friend x 2. (8) (Pelham Burn Collection)
£100-200

427

Six white metal thimbles, with inscribed friezes Souvenir/Ricardo/The Queen's Record Thimble - The Best of All/Got Mit Dir/Amistad/Enndoring, last three with inset tops. (6) (Pelham Burn Collection)
£60-100

428

Three gold thimbles, two by Simon Bros, one with inset stone top, possibly Norwegian. (3) (Pelham Burn Collection)
£100-200

429

Six silver thimbles with steel tops, all with decorative friezes, one named, largest, 2.5cm. (6) (Pelham Burn Collection)
£50-100

430

A silver thimble, the frieze with Prince of Wales feathers and "Ich Dien", with cornucopias of flowers, faceted rim, two side holes, 2.5cm. (Pelham Burn Collection)
£50-100

431

Base metal Royal Commemorative thimbles, comprising; QEII 1953/Silver Jubilee 1910-1935/Geo V and Queen Mary/Coronation 1902 Edward VII and Alexandra/Coronation of Geo VI and Queen Elizabeth, May 1937/Silver Jubilee 1910-1935 Geo V Queen Mary with portraits, last brass. (5) (Pelham Burn Collection)
£50-100

432

Eleven diminutive thimbles for children, mostly silver, and with decorative friezes, the largest with steel top, 1.7cm. (11) (Pelham Burn Collection)
£50-100

433

Four 17th century and later silver thimbles for children, the largest stamped to the frieze "I.H.", 1.7cm, another with rectangular panel dot initialled "M.R.", with maker's mark "I.G." 1.4cm, another smaller with indistinct maker's mark, 1.2cm, and another, 1.5cm. (4) (Pelham Burn Collection)
£100-200

434

Six silver place name thimbles, Best Wishes From - Salisbury/Blackpool/Stratford upon Avon/Bournemouth/Leeds/Bradford/Exeter. (6) (Pelham Burn Collection)
£60-120

435

Eight silver thimbles with 'stone' tops, most with decorative friezes, including an example with pierced decoration to sides and initialled 'H', 2cm. (8) (Pelham Burn Collection)
£80-120

436

Four silver finger guards, comprising; a Dutch ribbed ring form example, 3.5cm, a finger guard with engraved partial frieze over a faceted rim, 2cm, another ribbed, 1.6cm, and an unusual example with raised ledge to top, initialled "E.S.". (4) (Pelham Burn Collection)
£80-120

437

Two enamel decorated thimbles, probably Russian, one in silver, one in gilt, both with multi-coloured enamel decoration. (2) (Pelham Burn Collection)
£50-100

438

Five silver thimbles, with enamel decoration, comprising; an example in full enamel decorated with flowers below a 'stone' top, three with floral enamel friezes, and a Dutch scene enamel frieze. (5) (Pelham Burn Collection)
£80-120

439

Three silver and niello decorated thimbles, comprising; a Marsh Arab example, an example with script, and another initialled 'S'. (3) (Pelham Burn Collection)
£50-100

440

A quantity of thimbles, plastic, aluminium advertising and modern wooden. (qty) (Pelham Burn Collection)
£20-40

441

Five thimbles relating to T.C.I., comprising 1996 Speaker, boxed, 2000 Florida-Speaker, boxed, 2008, 1994-Troy N.Y., Award Dorothy Friend and 1996, and 1996-Troy N.Y. Award to Diane Pelham Burn. (5) (Pelham Burn Collection)
£50-100

442

Two large scale thimbles, possibly samples, one marked for Charles Horner, 3cm. (2) (Pelham Burn Collection)
£40-80

443

Ten silver thimbles, comprising; two with coloured enamel friezes, one with 'stone' top, an example with duck decorated frieze, another with three young girls hand in hand, another with frieze of anchors, another engraved "Mary Swanburn", a Prov. Pat. with cutter, another, the frieze decorated with hares and two others. (10) (Pelham Burn Collection)
£100-200

444

Thirty white metal thimbles, mostly with decorative friezes. (30) (Pelham Burn Collection)
£80-120

445

Thirty white metal thimbles, mostly with decorative friezes. (30) (Pelham Burn Collection)
£80-120

446

Thirty white metal and silver thimbles, including examples with decorative friezes. (30) (Pelham Burn Collection)
£80-120

447

A standing silver thimble compendium, probably German, late 18th century, the circular base with tapering cylinder needlecase with engine turned decoration, the screw-off thimble revealing a tapering double reel unscrewing to reveal a further compartment, with a hanging chain, 8cm high. (Pelham Burn Collection)
£200-400

448

Twenty two white metal and silver thimbles, most with decorative friezes, 22cm. (Pelham Burn Collection)

£50-100

449

A Palais Royal mother-of-pearl thimble, the plain border within two gilt metal bands, with oval gilt metal and enamel posy motif, small crack or natural flaw visible internally.

£50-100

450

A good Piercy's Patent tortoiseshell, silver and gilt metal thimble, silver apex, tortoiseshell body with two scrolls inscribed "Piercy's Patent" and with a rectangular initialled cartouche, within an inlaid floral border over a reeded gilt rim.

£400-800

See front cover illustration

451

A scarce silver commemorative thimble for the marriage of Queen Victoria and Prince Albert, with double portrait bust within a border of roses, shamrock and thistles.

£150-250

452

A combination filigree ware silver thimble/tape measures, the thimble unscrewing to reveal aperture for a scent bottle, the tape measure with oval initialled cartouche, matching to the thimble, tape lacking, a little misshapen.

£50-100

453

Three silver and enamel decorated thimbles, by Peter Swingler, comprising Churchill, Nelson and Sir Edward Elgar. (3)

£80-150

454

Seven silver thimbles, with cable, applied or pierced friezes. (7)

£40-80

455

Eight ivory, bone, vegetable ivory and other thimbles, comprising; an ivory example with carved frieze, a horn example of early style, another, and a bog oak example inscribed "Blarney". (8)

£50-100

456

Seven silver and white metal thimbles, comprising; two Indian kitsch examples, two filigree examples, one with screw rim, a Yemeni example, and two part enamel decorated examples, one probably Russian. (7)

£50-100

457

Twelve silver and white metal thimbles, mostly with decorative borders, including one with amethyst coloured top, some s.d. (12)

£50-100

458

Fifteen silver and white metal thimbles, most with decorative borders, including three with stone tops. (15)

£80-150

459

Two early 19th century porcelain thimbles, comprising; an unusual green ground example of a man seated by a roadside in a winter landscape, and another painted with flowers within gilt bands (cracked). (2)

£80-120

460

Three 19th century English porcelain thimbles, probably Worcester, each painted with a bird on a blush ivory ground. (3)

£50-100

461

Two Royal Worcester puce mark thimbles, each painted with a bird and flowers within gilt lines. (2)

£50-100

462

Two Royal Worcester puce mark thimbles, each painted with a bird between gilt lines, both signed "Powell". (2)

£100-200

463

Three mid-19th century English porcelain thimbles, all painted with flowers, one s.d. to rim. (3)

£100-200

464

Two 19th century English porcelain thimbles, both marked for Stevenson & Hancock, one in the Imari pattern, one painted with flowers and butterflies, latter s.d. to rim. (2)

£100-200

465

Three attractive early 19th century English porcelain thimbles, comprising; an example painted with a butterfly amid fauna, between gilt lines, another with a butterfly and wheat ear, and another painted with three insects over a decorative border. (3)

£150-250

466

Two Norwegian enamel decorated thimbles, both in the style of David Andersen, comprising; a mountainous lakeland scene, stone top, and another in gilt with scrolling blue enamel frieze over a white dot enamel rim, stone top, last marked to interior of apex "C. M. & Co.". (2)

£100-200

467

Two Norwegian enamel decorated thimbles, both in the style of David Andersen, comprising; a winter lakeland landscape with moose, and another in gilt with blue turquoise van dykes (one s.d.), over a white dot enamel frieze on a blackened ground, both with stone tops, marks to interior apex. (2)

£100-200

468

Two Norwegian enamel decorated thimbles, both in the style of David Andersen, comprising; a winter landscape with moose, and another in blue guilloche style enamel, both with stone tops and with marks to interior of apex. (2)

£100-200

469

A late 17th century Dutch silver thimble, with Dutch inscription to frieze, within a star border and two hallmarks.

£80-120

470

An 18th century English Staffordshire enamel thimble, the white top over pink body with two gilt outlined panels, one of a duck, the other an exotic bird, divided by raised white dots, cracks and minor losses, copper rim.

£50-100

471

Three silver thimbles, all 19th century, comprising; an example thought to depict Windsor Castle (misshapen hole to apex), another similar (misshapen, holes), and a tall example, the frieze with rectangular cartouche flanked by flowers enclosing clasped hands with cuffs, within rope borders, slight dent and split. (3)

£80-120

472

A mixed lot of thimbles, comprising; six silver examples, s.d., a gilt metal example with pierced loop frieze, a nickel example "Victoria Jubilee", three small early thimbles, an enamel thimble, probably Persian, and seven others. (19)

£40-80

473

No Lot.

474

No Lot.

Bodkins and Bodkin Cases

475

A late 18th century silver filigree bodkin case of oval section, the lower section with filigree base, the upper plain with engraved initials, gilt metal core, 10cm.

£100-150

476

A good 18th century silver bodkin, of tapering form with a rectangular slit below a hole and ear spoon, engraved with lines and zig zags and initialled "E.S.", 11.5cm.

£100-150

477

An 18th century silver bodkin, of tapering form with a long rectangular slit below a hole and ear spoon, initialled "M.P." and "M.O.", 8.5cm.

£60-100

478

Three 19th century bodkins, comprising; a silver scaled fish form example, 6.5cm, a plain silver continental example with ear spoon, 6.5cm, and a faceted steel example, 7cm. (3)

£40-80

479

Four 19th century bodkins, comprising; a silver scaled fish example, 5cm, another engraved, broken, an 18th century gilt example with ear spoon, 7.5cm, and a continental white metal example, 5cm. (4)

£40-60

480

Four 19th century bodkins, comprising; a silver fish form example, 6cm, another engraved, 6.5cm, and two others. (4)

£40-60

481

A late 18th century mother-of-pearl needle or bodkin case, of rectangular section and tapering form, white metal mounts and now containing a steel handle and three screw top hooks.

£50-100

482

A late 18th century enamel bodkin case, the green ground with panels of rural scenes outlined in gilt, the ground with clusters of white dots and inscribed on a panel "Sincere en *** ouet", lacking thimble cover, 11cm. (Pelham Burn Collection)

£50-100

483

A pierced ivory bodkin case of cylinder form, with three bands of trellis decoration, 8.5cm.

£30-50

484

Two straw-work bodkin cases and a similar needle packet box, the bodkin cases of cylinder form with pointed ends, both in elaborate geometric straw-work, 10.5cm and 8cm, the rectangular box with floral mosaic lid, embossed foil lined interior, 9cm x 5.2cm. (3)

£50-100

485

Two good beadwork covered needle or bodkin cases, both worked in coloured geometric patterns, one of cylinder form, one of rectangular form, both 9.2cm. (2)

£40-80

486

Three bodkin or needle cases, comprising; a straw work example of oval section, 8.5cm, a cylinder form straw work example with pointed oval tasselled ends, well-coloured, 9.5cm, and a painted wooden cylinder example applied with coiled metal, 8cm. (3)

£40-80

487

No Lot.

488

No Lot.

Miscellaneous – Sewing

489

A silver plated spool knave, the stirrup form frame on hanging chain with circular pierced hook, 23cm.

£30-50

490

A mixed lot, comprising; a pair of silver handled scissors decorated with 'C' scrolls and trellis, 9cm, a set of folding safety scissors, with mother-of-pearl handles, and four other items. (6)

£30-60

491

A mixed lot, comprising; an engine turned circular ivory vinaigrette, s.d., 4cm, a carved ivory cylinder tape measure, two disc form ivory pincushions with burnt circle decoration, 2.5cm diameter, an ivory massager stamped "The Massager Patent", 4cm, and sixteen mother-of-pearl Chinese gaming counters. (21)

£40-80

492

A mixed lot of bone and ivory sewing tools, comprising; six small shuttles, two needlecases, a reversible stiletto, a pair of ivory mounted scissors with ivory sheath, s.d. and two other pieces. (12)

£50-100

493

A mixed lot, comprising; a vegetable ivory barrel form tape measure with tape, a mother-of-pearl waxer, 2.2cmc, a pair of circular mother-of-pearl pincushion sides, 4.2cm, and a 19th century white metal shuttle, 6.5cm. (5)

£40-80

494

A mixed lot, comprising; an ivory Swiss chalet thimble box, hinged roof, with a thimble, a Tyrolean horn needlecase, a plique et jour thimble, an enamel thimble, a brass ribbon threader in the form of a pair of scissors, and a napkin clip in enamel in the form of a vintage car. (6)

£40-60

495

A mixed lot, comprising; a material pin wheel, painted to one side with a Louis Wain style cat's head, 7cm, an embroidered beaded pincushion, a needlebook, an ivory pincushion clamp, a wooden clamp, incomplete, a brass tape measure, a brass thimble egg, two Mauchline ware circular reel boxes, and a similar pincushion. (10)

£40-60

496

A mixed lot, comprising; a mother-of-pearl and gilt birdcage tape measure, tape within, a pair of bone Stanhope binoculars (5-view Portsmouth Harbour), 2.4cm, a monogrammed ivory work box mirror, 11.5cm, a silver handled mother-of-pearl stiletto, a mother-of-pearl emery, a mother-of-pearl snowflake winder, and a folding knife/button hook with mother-of-pearl scales, 3.7cm. (7)

£50-100

497

An American educational sampler book, labelled for "Mary E. Lewis, West End School, 27th Section" and further inscribed " ... Sewing Session 1900-1901, 5956 Angora Ave., West Phila., Pa.", leatherette spine with marbled boards, 34 pages of samples, most with opposing title/note, together with a miniature camisole and chemise, 24cm x 19cm.

£300-400

498

Three wooden children's darning, two figural and one as a face, hand painted, largest 13cm. (3) (Pelham Burn Collection)

£30-50

499

A collection of ten needle threaders, in metal, including advertising examples, washing powders, vanilla flavouring, etc., and one for Lux, in original packet. (10) (Pelham Burn Collection)

£30-50

500

Four lucets, comprising; a boxwood example, 9.5m, a teak example, 6cm, an ivory example, 8.5cm, and a bone example, 7.5cm. (4) (Pelham Burn Collection)

£50-100

501

Four waxers, comprising; a Spa work floral painted example, 2.8cm diameter, an ivory reel form waxer with floral carved ends, 2.3cm diameter, and two mother-of-pearl examples, one with turquoise centre. (4) (Pelham Burn Collection)

£50-100

502

A mixed lot, comprising; four mother of pearl flowerhead reel tops, a mother-of-pearl silk winder, a bone macramé fish, an egg form stickware darning, a coronation crown pincushion with thimble finial (Made in Japan), and four packets of vintage steel knitting needles. (12)

£30-50

503

The sample book of Cecilia Holland, Autumn Term, 1914 to Spring 1916, nine pages with multiple items including patterns, embroidery, stitches, darning, flannel knickers (marked 18/20 VG), cotton knickers, etc., 43.5cm x 31cm, and another sample book of later date, the pages in a later plastic binder, 30cm x 21.5cm.

£50-100

504

A group of 19th century burnt circle and Sadeli ware ivory sewing pieces, comprising; two ivory cylinder needlecases, 8cm, a disc form waxer a similar pincushion, a needlebook, 4.8cm x 4cm, and a Sadeli work reel holder and cotton barrel. (qty)

£80-150

505

Four ivory sewing pieces, comprising; an oval pincushion, one side pierced with scrolling leaves, 5.5cm, a disc form waxer with star decoration, 2.2cm, a cylinder form emery 3.5cm, and a thimble egg with silver thimble. (4)

£40-80

506

A mixed lot, comprising; a Palais Royal style mother-of-pearl tapering needlecase, fault to one side, 7.8cm, a hall marked leaf scroll engraved needlecase, 7.2cm, a turned ivory reversible tambour hook, two rosewood thimbles, a rosewood cylinder tape measure with bone spindle, two bone French prisoner of war stilettos and a folding toothpick. (9)

£40-80

507

A mixed lot, comprising; four pairs of steel scissors, one with sheath, a glass scent bottle with stopper, a wooden silk winder, a silver handled stiletto, a white metal needle or pencil holder, a crochet hook, a pearl handled button hook, an olive wood sewing egg, and a card of boot/shoe buttons for H. R. Powell. (qty)

£40-80

508

A mixed lot, comprising; a small leather binocular case containing reels, thimble and pincushion to inner lid, 4.2cm, a mother of pearl purse, an ivory needlecase/darning, an oval section leather case with needlework panel to inner liner, a glass smelling salts bottle, a brass thimble egg, small silver thimble, and a bone shuttle. (8)

£40-80

509

A mixed lot, comprising; an Halcyon Days enamel reel stand and matching pincushion, a "Wristlet Crochet Ball Holder", two darning, two Tunbridge style pincushions, sundry shuttles, two dolls, various needle books and packets, a quantity of modern ceramic thimbles, and sundries. (qty)

£50-100

510

A Cantonese carved ivory netting case and tools, the case carved with a dragon, foliage, birds and butterflies, flowerhead base, with a good selection of 14 tools, 16.5cm.

£150-250

511

Baxter, Le Blond and other needle box prints, comprising; a pair, framed, from the "Queen's Floral Needle-box Set", a sheet of ten by Le Blond, "The Royal Set", a sheet of ten by Le Blond, "The Fancy Subject Set", another set of twelve including Crystal Palace, and two larger prints, one by Baxter. (7)

£50-100

512

A 19th century mahogany and brass mechanical yarn twist counter/tester, apparently for testing the strength of thread, the mahogany plinth with inset brass 15 inch rule and mounted with two thread wheels, one adjustable along the length, with a winding mechanism and silvered recording dial, with two rings, one engraved "1-50", the other in reverse, 57.5cm, with pine storage box.

£40-60

Miscellaneous – Non-Sewing

513

A dome top glove box, in rosewood with burr maple scrolling and floral pattern inlay, oval mother-of-pearl lid cartouche initialled "MMPR", 24cm x 10cm x 8cm.

£40-60

514

Two purses, a notelet and two small boxes, comprising; a white metal leaf scroll engraved purse with initialled shield cartouche, on hanging chain, 8.5cm, a tortoiseshell example, one side inlaid in white metal, 8cm, a small leather bound notebook with pencil, a papier-mâché snuff box, and a Japanese cherub and lily embossed soft metal box, 6cm. (5)

£50-80

515

Jewellery: A Victorian gilt metal, enamel and pearl pendant with locket aperture to reverse, on gilt chain, a gold and glass heart shaped locket set with red stones, s.d., a Victorian mourning brooch with plaited panel of hair, another brooch in gold, set with pearls and central stone, and a square form locket, one side with plaque of the head of a classical soldier. (5)

£80-120

516

Jewellery: A 9ct gold mounted jasper ware cameo pendant, 4.5cm, a white metal lady's fob watch, two chains, and a gold pencil. (5)

£60-100

517

A collection of small bottles and jars, comprising; a cut glass scent bottle with hinged silver top, a Venetian style coloured glass scent bottle, stopper matched, 6cm, a small silver topped jar, two other scent bottles and three miniature baby feeding bottles. (8)

£30-50

518

A small collection of vintage sea shells, in various containers. (qty)

£10-20

519

A 19th century Pope Joan board, of divided circular form with printed and painted decoration, foot replaced, 31cm diameter.

£30-50

520

A pretty white metal guilloche enamel powder compact and lipstick, the compact on short black enamel Art Deco style chain, the compact with an enamel panel of a basket of flowers within blue guilloche enamel surround, folding mirror to interior and stamped "Sterling F. & B.", and linked to a lipstick cylinder with silver tassel, 18cm.

£100-200

521

A Victorian silver and enamel perfume bottle of oval form, with bulbous screw top, one side of the flask well enamelled with the head of a dog, London, 1890, by Samuel Mordan & Co., 7cm.

£200-300

522

A large rectangular silver buckle, pierced and cast with masks, fruit, birds and scrolls, import mark, 9.5cm.

£60-100

523

A 19th century French Dieppe ivory mounted purse, of horseshoe form, one side carved with a traveller on horseback with a young boy on a roadway.

£40-80

524

Two late 18th/early 19th century lace watch case liners, one depicting a sailing boat, the other a jardinière of flowers amid hearts and surmounted by a bird, each approximately 4cm. (2)

£100-150

525

Treen: Two roundel turned wooden 'sovereign' balls, largest 4.5cm, and a turned lignum vitae thimble case of standing acorn form, 7cm. (3)

£30-50

526

A 19th century pale velvet shoe, with gilt wire embroidery set with pearls, 22cm.

£30-50

527

Card and paper almanac fans and cards, comprising; 'Cantons Perfumed Almanac 1871', another 1872, "Rimmels Comic Fan Almanac 1875", and another "B. Sulman 1875", largest 12cm, three fan form Christmas cards, a Tucks cornucopia, and a scrap. (8)

£80-120

528

Bristol Card, comprising; an amusing hand held weighing balance, "Modern Love", one pan with a miser's purse, the other a heart, 12cm wide, a ribbon book mark with stacked paper crosses, and a pair of paper gloves with verse, 11cm. (3)

£40-60

529

A reverse glass multiple image picture and two paperweights, the picture with six views of Brighton - The Pavilion, Grand Hotel, New Pier, Brighton Aquarium - Corridor, three Brighton Aquarium - Exterior, set within silvered borders and a pitch pine Oxford frame, 22cm x 14.5cm, a rectangular paperweight "Holyrood Palace", 7.6cm, and a circular example, "Edinburgh Castle From The Grass Market", 6cm. (3)

£40-80

530

A mixed lot, comprising; an engraved mother-of-pearl paperknife, a pair of orb and sceptre paperknife/button hook for the Coronation of Edward VIII, 11cm, various tools, a mother-of-pearl pin box, Canton carved ivory clamp, miniature clay pipe and matches, small group of watercolour patterns in folded paper "Pattern For Braid Work" and a quantity of Pearsalls Stout Floss/Eastern wooden cotton reels with contents. (qty)

£50-100

531

An amusing Victorian silver pepper pot in the form of an owl, large glass eyes, a few minor dents, splitting above eyes, Sheffield, 1869, by H. W. and C., 8.2cm high.

£300-500

532

A silver ring stand in the form of a parrot on a perch with four ring hooks, on a circular base, Chester, 1922, by AL/LD, 7.5cm.

£40-80

533

Three silver bookmarks, comprising; a teddy bear example, Glasgow, 1930, 6cm, a trowel form example, Birmingham, 1925, 7.7cm, a continental example of oval form surmounted by a cherub, 7.5cm, and two miniature Welsh silver hats, Chester, 1910, by Charles Horner. (5)

£40-80

534

Four silver pieces, all probably skirt lifters, comprising; two engraved butterfly clip examples, Birmingham, 1925 and 1929, an engraved heart shaped example with floral decoration, Birmingham, 1902, and an example stamped "Stirling", fashioned as an oar stirrup 6.7cm. (4)

£50-60

535

A mixed lot, comprising; a French 'souvenir' thimble, a gilt tooled leather card case with inset petit point needlework panels, 8cm x 5.3cm, a miniature drum, a.f., a bone pincushion, an advertising circular form tape measure, a button hook and a stiletto, a gilt brass letter clip and a turned boxwood cannon barrel, 12cm. (9)

£50-100

536

A fine example of Bristol card, a reel form box in pierced and part embroidered card with an embroidered and coloured group of lilies to the lid, containing a natural shell pincushions, box 7cm diameter. (2)

£40-80

537

A silver baby's rattle with mother-of-pearl teether, 8cm, a combined silver pencil/folding knife, Birmingham, 1878, 6cm, two Art Nouveau silver buttons, three modern baby rattles, one marked, a miniature hand mirror and a comb. (9)

£40-60

538

A tortoiseshell, bone, mother-of-pearl and pewter inlaid model of a mandolin, three string keys lacking, 16cm.

£20-40

539

Ivory turnings and a boxwood glove powderer, the ivory pieces comprising an urn form glove or wig powderer, 8cm, a bottle form turning, 8cm, a spiral decorated napkin ring, a carved and pierced cylinder box with dominoes, 3.6cm diameter, a bone totem, an ivory powder puff, a dice cup, and a bottle form boxwood glove powderer, lacking cover, 11cm. (7)

£50-100

540

19th century Cantonese carved ivory items, comprising; a sewing clamp, 8cm, two dice shakers, 6.7cm and 6.4cm high, two circular lidded boxes, 3.5cm and 4.5cm diameter, and a napkin ring. (6)

£50-100

541

A mixed lot, including a carved ivory cockerel, 3cm, a rat, 3.8cm, a brooch, a bangle and other pieces, including a pair of carved boxwood figures of oriental boys. (qty)

£40-60

542

A mixed lot, comprising; a carved ivory reversible stiletto, two bone and ivory cylinder needlecases, three crochet hooks, folding bone knife, button hook and a Mauchline ware (West End Terrace, Braco) reel crib. (9)

£30-40

543

Four large porcelain half dolls, comprising; a lady in pink feathered bonnet, 18cm, a lady with curled hair holding flowers, 17cm, a lady with Spanish style headdress, 17cm, and a lady in blue bonnet, 11cm. (4)

£50-100

544

Two porcelain half doll brushes and a corkscrew, the smaller brush as a child in a purple bonnet, 12cm, the larger with blue spotted blouse, 20.5cm, and corkscrew, head and shoulders as a lady in hunting top hat and cravat, 12cm. (3)

£40-80

545

Three porcelain half dolls with bodies, comprising' a lady in black lace and sequin dress, 20cm, a lady holding a note, 17.5cm, and a lady one hand to her head, the other her bosom, 18.5cm. (3)

£40-80

546

Three porcelain half dolls, comprising; a lady in orange bonnet with lampshade body, 20cm, a Pierrot style lady, 12cm, and a crinoline lady with porcelain legs, 12cm. (3)

£40-60

547

Porcelain Dolls: A clown style half doll, old velvet body and ribbon legs, body, 11cm, a Pierrot style female head, 4cm, a male continental porcelain naked doll, 4cm, a bath, 6.5cm, and a vesta as a child clown, playing a guitar, 9.5cm, and a modern bisque baby in a wooden cradle. (7)

£50-80

548

A Georgian ivory toothpick box of rectangular form, the lid carved with a trellis design with florets, the resulting panels with gold pique work, 5.7cm x 2.1cm.

£60-100

549

A Georgian ivory toothpick box of oval elongated form, the lid with a central gilt mounted oval glazed panel inset with a lock of hair tied with a jewelled ribbon, within a gilt metal dot border, gilt hinge mount, oval mirror, 9.5cm.

£100-200

550

Two Georgian ivory toothpick boxes, both of rectangular form, one with ribbed decoration, one with inset gold panels, lines and pique work, both with internal mirrors, both with cracks to hinge mounts, 6cm x 2.3cm and 6.6cm x 2cm. (2)

£80-120

551

A Georgian green shagreen toothpick box of rectangular form, white metal tablet to lid, velvet lined interior, slight loss by hinge at back, 8.4cm x 2.6cm.

£50-100

552

A Georgian ivory toothpick or needle box of rectangular form, the sliding lid within a beaded surround and carved with leaves and flowers, the latter mounted with faceted black beads, slight loss to edge rim at shell carved lid end, 7.7cm x 1.7cm.

£40-80

553

Two shallow Japanese ivory rectangular boxes, the lid of one engraved with flowers, the heads highlighted in yellow, 9.5cm x 5cm, and another smaller with floral and geometric enamel decoration, 3.5cm x 2.6cm. (2)

£50-100

554

A Georgian ivory scent bottle case of diminutive form, gilt metal mounted with bands and oval lid plaque, the interior with damaged glass scent bottle, split to front, 3cm high.

£40-80

555

Six small works of art, comprising; two silver and niello work boxes of cornucopia form, each with swing hook opening to reveal two compartments, the upper of each with a bird or bat as a compass or toys, 3cm and 3.5cm, a 9ct gold fob inset with a circular antiquarian plaque, 2.1cm, a carved stone ring inset with mother-of-pearl, a serpentine whistle, 5cm, and a cloisonné ball form locket, 2.5cm diameter. (6)

£80-120

556

Two unusual watch keys, late 18th/early 19th century, comprising; a gilt metal and steel example, oval, inset to one side with a beadwork panel of a house, to the other a courtyard and castle, 3.2cm x 5cm, the other with an oval red hardstone panel, initialled "W.J.D." within an elaborate gilt floral surround, 6cm x 3cm. (2)

£100-200

557

An unusual French watch key, late 18th century, of oval form, one side with a painted panel of a cockerel below the inscription "Vive La Liberte", flanked by flag and laurel spray, the reverse painted with flowers, in verre eglomise style mounts and gilt metal frame, 5.2cm x 3.8cm.

£80-120

558

A pair of 19th century ivory rouge or balm pots, of circular domed form, the lids engraved, one with the head of a gentleman in armour, the other of a woman, both s.d., 3.9cm diameter. (2)

£40-80

559

A Georgian ivory toothpick box of rectangular form, the lid in basket weave with gilt studs and pique work border, internal mirror, s.d., 5.9cm x 1.7cm.

£80-120

560

No Lot.

561

No Lot.

Buttons

562

An interesting set of six silver buttons, octagonal and slightly domed, each with a 19th century horseman, some with indistinct marks to reverse, 2.2cm. (6)

£100-200

563

A set of five silver buttons, circular, slightly domed, each depicting an 18th century cavalry soldier on horseback with sword raised, in ropework borders, 2.23cm. (5)

£60-100

564

Five from a set of six Essex Crystal style buttons, each with the head of a dog, 1.2cm diameter, in a fitted case.

£50-100

565

A collection of buttons, including six cut steel examples, a set of four in floral enamel, three similar, a set of six gilt and turquoise painted, various others, and a selection of agate buttons. (qty)

£40-80

566

No Lot.

567

No Lot.

Samplers, Beadwork, Needleworks and Other Textiles

568

An 18th century coiled needlework picture, of a saint and child in a church/room interior, some printed paper body details, in a glazed Hogarth frame, 27.5cm x 20cm.

£50-100

569

An 18th century petit point needlework panel, of strawberries and foliage, minor repairs, 24cm square, and four small framed silk embroideries, 14cm x 13cm approximately. (5)

£40-80

570

A good Paisley shawl, executed with repeating bands of scrolling and geometric motifs, fringed in red, 168cm x 176cm.

£150-200

571

A large printed Paisley bed throw, in velvet coloured squares, with multi-coloured fringe, 348cm x 180cm.

£50-100

572

Four circular Victorian beadwork watch purses, three with geometric decoration, one in radiating circles, largest 8cm diameter. (4)

£80-120

573

An 18th century silk work needle picture, The Flight Into Egypt, with a procession of a horse or lama, a camel, the landscape with buildings, animals and insects, faces in silk, possibly unfinished, 27.5cm x 29cm, glazed and framed.

£200-300

574

An Adam & Eve sampler, "Mary Ann Parratt Aug 23rd 1837", with verse, stags, jardinières of flowers, insects and birds, etc., within a trailing floral border, 42cm x 35cm, glazed and framed.

£150-250

575

Seven various bags and purses, comprising; an 18th century leather bag of four panels, each with a painted scene, three of figures, one a building, worn, 15cm, a shield form bag, 20cm, a knitted bag, 12.5cm, a crude needlework bag with an image of a house, 14.5cm, a beadwork case, 15.5cm, a blue silk bag fringed and tasseled, 25cm, and a velour purse on tasseled green cord, 9cm. (8)

£100-150

576

Beadwork purses and beadwork, comprising; a miniature green bag applied with white beads, 7cm, a floral beadwork purse, 9cm, a beadwork purse with white metal clasp, 8cm, a knitted bag with applied floral beadwork, 11cm, a beadwork necklace, another, a.f., a beadwork ring, and a small beadwork panel in modern frame. (8)

£100-150

577

A whitework panel, worked with flowers, sacred heart, stag, bird, inscribed in an oval "Par Filo Mena Mijan Gos 1868", believed to have been worked by a novice, 54cm x 40cm.

£50-100

578

A needlework panel, late 18th/early 19th century, depicting a group of domed buildings and poplar style trees amid meandering flowering branches with a row of buildings at the base, in coloured silks and metal threads, 35cm square.

£100-200

579

A well-executed French style petit point panel in the 16th century style, possibly 19th century, the central kneeling female figure within colourful flowers, with two sheep and a dog, an inscription to the top right, 61 x 69cm.

£150-250

580

A needlework panel, probably 19th century, on red cloth embroidered in coloured silks with flowering branches, in a modern gilt frame, 30cm x 16cm.

£80-120

581

A good beadwork miser's purse and a beadwork bracelet, the purse worked with flowers and geometric patterns, gilt rings and end tassels, 31.5cm, the bracelet in a trellis design of white and gilt beads with fancy gilt clasp, 9.5cm. (2)

£50-100

582

Beadwork purses and others, comprising; a good floral beadwork drawstring purse, 8cm, another with gilt clasp, 10cm, a stitched up beadwork purse, a beadwork snake necklace with gilt metal snake head clasp, s.d. to beads, and two material small drawstring bags, one applied with beadwork. (qty)

£50-100

583

An alphabet and numeral sampler "Mary Lucy Haskew, Age 7, Saint Joseph's Convent, Sc., March 1862, Wolverhampton", in greens, red and blue, 25cm x 24cm, glazed and framed.

£50-100

584

A beadwork purse and a pair of beadwork shoe 'buckles', the purse with gilt metal clasp and worked in coloured beads with flowers and other motifs, "Jane Wardrape 1839", 10cm x 7.5cm, the buckles in metallic beads, 5.5cm. (3)

£30-50

585

Two beadwork purses and another item, comprising a rectangular beadwork purse in geometric and coloured bands, drawstring top, 21cm x 17cm, another smaller with geometric pattern, 14cm x 9cm, and a piece of lace with tamboured steel beads. (3)

£40-60

586

A delightful miniature sampler, vividly coloured with alphabet in mixed upper and lower case "1805 M. A. Fill", 7.5cm x 6.4cm.

£80-120

587

Tapestries and trimmings, comprising; a tapestry seat cover "Époque Regence", background unfinished, a floral tapestry panel, "Queen Anne", three tapestry floral panels of medieval style figural scenes, together with crochet trimmings and other pieces. (qty)

£30-50

588

A petit point woolwork tapestry picture of a bowl of roses and other flowers, on a gallery edged table top, 58cm x 50.5cm, in gilt frame.

£40-60

589

An alphabet and numeral sampler in green and red, "Alice Ada Marshall, June, Aged 9 Years 1877 - Broadholme School", 32cm x 24.5cm, in gilt frame.

£40-60

590

An Arts & Crafts style embroidered panel, of mixed brightly coloured variant flowers, on scrolling branches, 39cm x 53.5cm, in moulded frame.

£50-100

591

An unusual 19th century French steel purse, one side with a reverse glass picture of a cathedral within a raised surround of coiled wirework and steel beads, the reverse decorated in a conforming style with metal flowers, chain suspension, 8cm.

£40-60

592

Four miniature purses and bags, comprising; a knitted maroon example with metal beads, gilt clasp, 5cm, a black mesh bag with gilt beads, 8cm, a Georgian red leather and steel sporran style purse, 3.5cm wide, and a drawstring bag in different coloured leather panels, 6cm. (4)

£40-80

593

Three bags and purses, comprising; a 19th century beadwork example decorated in bands with coloured flowers, draw string top, 8.5cm x 7cm, and two geometric needlework bags, largest 15cm x 12.5cm. (3)

£40-60

594

Four small purses, comprising; two circular geometric beadwork watch purses, 5.2cm, a small purse with steel clasp and decorated with steel beads, and another purse with gilt metal catch, 6.5cm x 6cm. (4)

£40-80

595

Four purses and bags, comprising; a floral beadwork example with green ground, steel clasp, 9cm x 7cm, a small circular purse with steel bead decoration and clasp, 5cm diameter, a knitted drawstring bag, 10cm x 9cm, and a material purse or bag with steel clasp, 10.5cm x 11cm. (4)

£40-80

596

Four purses, comprising; a good floral and geometric beadwork example, gilt clasp, 7.5cm x 9cm, a knitted purse decorated with steel beads and with steel clasp, 8cm x 9cm, another with green ground, and a long slender knitted maroon purse, steel clasp and tassel, 20cm x 7cm. (4)

£40-80

597

Three purses, comprising; a bag form example with pierced and engraved oval gilt metal hinged cover, decorated with gilt beads, 6cm x 8cm, a green and cream purse decorated with steel beads and with steel clasp, 6.5cm x 7cm, and a Georgian open work maroon and silver embroidered purse with silver clasp, Birmingham 1819, by L. & C., 10.5cm x 7.2cm. (3)

£50-100

598

A glazed linen sample sheet for "F. Dawson", with pinked edge, mounted with ten samples including stitching and repairing techniques, a miniature sampler, 8cm x 9cm, with alphabet numerals and birds, named "S. Dawson", a larger sampler, 13cm x 12cm, and a pair of miniature knickers, sheet 46cm x 34cm. *With printed note "Sold By Direction of Sir Francis Winnington Bart., Removed From Brockhill Court, Worcestershire - Phillips Knowle February 2000".

£100-150

599

A glazed linen sample sheet for "F. Dawson", with ten various samples and a central folded paper pattern, 41cm x 36.5cm.

£50-100

600

Three bags and purses, comprising; a suede miser's purse embroidered in coloured silks and applied with gilt metal beads, 20cm, a late 18th century velvet purse, with a silk embroidered circular panel of a king or officer within silver wire embroidered surround below a crown, the reverse with flowers and fleur de lys, worn, gilt metal claps, 11cm x 6.5cm, and a semi-circular purse or bag embroidered in gold and silver threads with sequins, 15cm wide. (3)

£50-100

601

A well-executed sampler on linen, "Charlotte Drage Aged 12 Years - The Crucifixion of Our Saviour and The two thieves", worked with three pillars and verses below birds, a heart and a crown, within a zig-zag border, the whole in black and red, unmounted, 31.5cm x 32.5cm.

£200-300

602

Four late 19th/early 20th century sample panels on silk, Delhi, each embroidered in jewelled silver and gold coloured wire, largest 31cm x 23cm, each stamped to reverse "Groves Tailors ... Delhi". (4)

£40-80

603

A late 19th century beadwork palmette or shelf edging, worked in coloured beads with parrots and flowers, on a white ground over triangular openwork pendants, 102cm x 20cm, together with a card wound with approximately 10 metres of cut steel edging. (2)

£40-80

604

No Lot.

605

No Lot.

Lace Bobbins

606

Thirteen lace bobbins, comprising; eleven bone examples with various decoration, a pewter bound wooden example, and a novelty carved oak double lantern, 11.5cm. (13)

£40-60

607

Seven lace bobbins, comprising; bone example "Eilen Cooper", another "Samuel", three other bone examples and two wooden. (7)

£20-40

608

A collection of bone and wooden lace bobbins, comprising; two bone examples spirally inscribed "Facer Smith Died Nov. 9 Aged 20, 1861", the other "E. J. Newman, Died June 15th 1863, Aged 10 Years 7 months", five other bone examples with various decoration, three mother and babe old wooden examples, two with double bobbins, and twenty three various wooden lace bobbins, four modern. (34)

£80-120

End of Sale

THE SUMMER SEWING SALE

JULY 2014

INCLUDING PART 2 OF THE COLLECTIONS OF THE
LATE DIANE PELHAM BURN AND BETTY WOLF



A good leather cased silver sewing set in the
style of Joseph Taylor of Birmingham in
apparently unused condition

Estimate £400-600

Closing date for entries June 2014

Absentee Bidding Form

Paddle number

--

This sale will be conducted in accordance with our Conditions of Sale and bidding and buying at the sale will be regulated by those Conditions. You should read those Conditions which set out the charges payable by you on the purchases you make and other terms relating to bidding and buying at the sale. Please ask any questions you have about the Conditions before signing this form.

Please provide details of the lots on which you wish to place bids at least 24 hours prior to the sale. Bids will be rounded down to the nearest increment. New bidders must also provide proof of identity when submitting bids. Failure to do this may result in your bids not being processed. Bleasdales Limited will endeavour to execute these bids on your behalf but will not be liable for any errors.

If posting this form please contact us to ensure we have received it prior to the Sale date.

[illegible]

The Winter Sewing Sale		Sale date: 4 December 2013	
Sale no: December 2013		Sale venue: Lord Leycester	
Title			
Last name and initials			
Company name			
Address			
City		County	
Postcode		Country	
Telephone daytime			
Telephone evening			
Telephone mobile			
Fax			
Email			
Are you acting as a private <input type="checkbox"/> or a trade <input type="checkbox"/> buyer?			

BY SIGNING THIS FORM YOU AGREE THAT YOU ARE BOUND BY AND UNDERSTAND OUR CONDITIONS OF SALE. THIS AFFECTS YOUR LEGAL RIGHTS.

Your signature	Date December 2013
----------------	---------------------------

FOR OFFICE USE ONLY

Identification seen: Driving Licence ☐ Passport ☐ C/C ☐ Other _____ Date _____ Time _____ Taken by _____

Surname & Initials

Paddle number

[illegible]

BY SIGNING THIS FORM YOU AGREE THAT YOU ARE BOUND BY AND UNDERSTAND OUR CONDITIONS OF SALE. THIS AFFECTS YOUR LEGAL RIGHTS.

Your signature

Date

December 2013

FOR OFFICE USE ONLY

Identification seen: Driving Licence ☐ Passport ☐ C/C ☐ Other _____ Date _____ Time _____ Taken by _____



63



32



44



14



46



15



48



49



66



53



16



20



50



Sale Venue: The Great Hall, The Lord Leycester Hospital,
Westgate, High Street, Warwick, CV34 4BH

Bleasdales Ltd.
The Stables, 15 Imogen Gardens, Warwick, CV34 6FB, England
t: +44 (0) 7983 304880
rvb@bleasdalesltd.co.uk