

BLEASDALES

Limited

The Summer Sewing Sale
Incorporating Mauchline Ware

Including the collection of
the late Phyllis Savage.

Warwick, CV34 4BH, England
Wednesday 22 July 2015





1



2



3



4



5



6



7



8



9



10



11



12

The Summer Sewing Sale

to include the Collection of the late Phyllis Savage

Wednesday 22 July 2015 at 11am

The Great Hall, The Medieval Lord Leycester Hospital
Westgate, High Street, Warwick, England CV34 4BH

Sale Venue

The Lord Leycester Hospital
Warwick CV34 4BH
England

Contacts for use in emergency only please:
tel. 01926 491422
email lordleycester@btinternet.com

Viewing

Monday 20 July 10am to 4pm
Tuesday 21 July 10am to 4pm
Wednesday 22 July restricted viewing
from 9am

Restricted viewing after commencement of
sale.

Sale enquiries

Prior to view and sale
R.V. Bleasdale 07983 304880

View days

R.V. Bleasdale 07983 304880

Sale day

R.V. Bleasdale 07983 304880
M.A. Jones 07889 071414

email

rvb@bleasdalesltd.co.uk

Updated sale information and results

www.sewingsales.co.uk

Catalogue: £12 inc. UK P&P
£15 inc. worldwide P&P

Collection

Purchases may be collected from the
Lord Leycester up to 12 noon on Thursday
23 July 2015, thereafter please contact us on
07983 304880 to make collection/
delivery arrangements.

We consider posting items to clients as part of
our service and do so at cost.

Our packing is robust rather than pretty and
we may use recycled material to protect your
items.

Admission

Admission to our view is free, your catalogue
also allows two people entrance to the historic
medieval Hospital – Tuesday and Wednesday
10am–4pm.

Please note the hospital is closed on Mondays
with the exception of our sale view.

Press and Marketing

Chantal Haddon
01728 860924 or
07501 116934
cfhaddon@gmail.com

Conditions of Sale

Our Conditions of Sale, under which this sale
is conducted, are available via our website
www.sewingsales.co.uk or on request. Our
conditions are based upon recommended
Conditions of Sale approved by The Society of
Fine Art Auctioneers and The Royal Institute of
Chartered Surveyors. Your special attention is
drawn to conditions relating to online bidding
via the-saleroom.com

Front Cover Illustrations:

Top row lots: 83 / 457
Top middle row lots: 125 / 279 / 458
Bottom middle row lots: 43 / 254 / 461
Bottom row lots: 81 / 177 / 460
Back Cover Illustration: Lot 178

the-saleroom.com

At the Auction

Registering, Paddle Number and the Buyers Premium

If you are coming to the sale we will ask you to register so that we can provide you with your own paddle or bidding number.

All we will need to register you, are you name, address and contact details, a proof of identity, such as a driving license or passport. You only need to register once with us and we will keep your details securely for future sales.

If you bid in the sale and are successful you will pay the hammer price plus a premium of 20% of the hammer price.

Please note that any lots purchased via the-saleroom.com live auction service will be subject to an additional 3% commission charge on the hammer price.

Once you have paid you are able to collect your lots. For delicate items we are happy to supply additional packing materials free of charge.

What happens if you can't attend the auction?

Our printed catalogues provide comprehensive information about all the lots included in the sale as well as illustrations and guide estimates. Once you have decided which lots you are interested in you can then contact us to get further information about the condition of an individual item or to place your bid.

View online

Every lot in our sale will be published online with full catalogue details and a colour image. You can view all our sales online at www.sewingsales.co.uk. or via the-saleroom.com

Absentee bids

If you can't come to the sale one way to bid is by completing an absentee bid form prior to the sale.

Once again you will need to register your details, name, address and contact number.

We may contact you to check your identity.

Tell us which lots you are interested in and the maximum bid you wish to leave. Please remember that there will be an additional buyers premium charge on top of your maximum bid, which is 20% of the hammer price.

You can return your signed form (see back of catalogue) by post or email. If you are successful we will let you know within 48 hours.

Once you have paid the hammer price plus buyers premium of 20%, you can collect your items from us or for an additional fee we can arrange to post or courier them to you.

Telephone bids and Client Services

Unlike many other auctioneers we are happy to accept telephone bids on any items, we will not impose minimum lot values. To make sure that the auction runs smoothly we do have flexible restrictions on the number of items clients can bid on by phone.

To ensure that we provide an efficient telephone bidding service we ask you to contact us 24 hours in advance of the sale if you want to bid by phone.

We will need you to provide us with both a landline and mobile phone line number.

We will contact you during the sale, a few minutes before the lot you wish to bid on goes under the hammer.

If you are the successful bidder you will know immediately.

Payment

At present we are only able to accept payment by cheque, cash or bank transfer. We are not able to accept payment in excess of £5000 in cash per sale in order to satisfy current legislation.

We do not accept payment by credit or debit cards.

Our Bankers

Lloyds, Leamington Spa
Sort code: 30-94-93
Account no: 00302603
IBAN: GB24 LOYD 3094 9300 3026 03
BIC: LOYDGB21137

Online Bidding

Bleasdales Ltd offer an online bidding service via the-saleroom.com for bidders who cannot attend the sale. In completing the bidder registration on www.the-saleroom.com and providing your credit card details and unless alternative arrangements are agreed with Bleasdales Ltd:

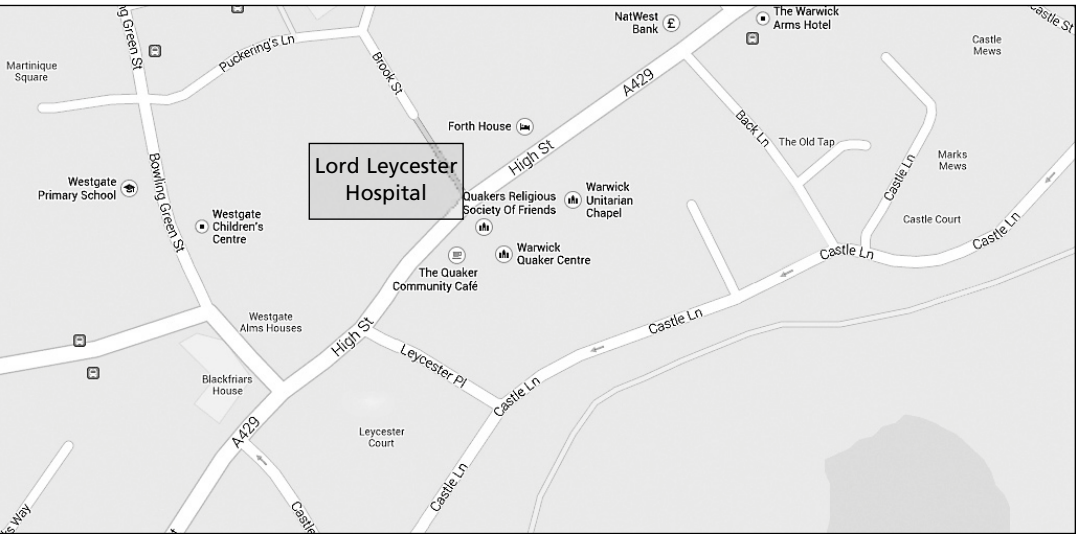
1. authorise Bleasdales Ltd, if they so wish, to charge the credit card given in part or full payment, including all fees, for items successfully purchased in the auction via the-saleroom.com, and
2. confirm that you are authorised to provide these credit card details to Bleasdales Ltd through www.the-saleroom.com and agree that Bleasdales Ltd are entitled to ship the goods to the card holder name and card holder address provided in fulfilment of the sale.

Cites Regulations

Please be aware that certain Lots in this sale may be subject to the CITES regulations if exporting these items outside the EU. These regulations may be found at www.ukcites.gov.uk or may be requested from:

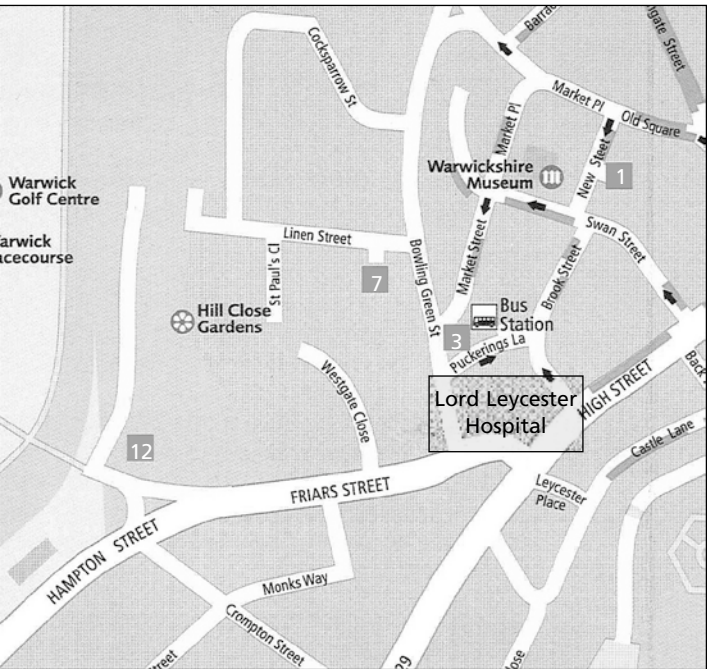
Department for Environment, Food and Rural Affairs (DEFRA)
Global Wildlife Division
1st Floor, Temple Quay House
2 The Square
Temple Quay
Bristol BS1 6EB

Sale Location – Warwick CV34 4BH



Car Parking

For viewing and Sale we recommend car parks 1 / 3 / 7 / 12 on the map below.
Relevant car parking charges are also shown below. P12 represents the best value.



P1	New Street	CV34 4RX	3 hrs (charging applies 24 hours)	£3*
P3	West Gate	CV34 4DE	3 hrs (charging applies 24 hours)	£3*
P7	Linen Street (locked between 8pm – 7am)	CV34 4DT	24 hrs (open between 8am – 8pm)	£6*
P12	The Racecourse St Marys	CV34 6JP	24 hrs (charging applies 24 hours)	£1*

* maximum charge

By Rail
Warwick Station – 10 minute walk
Warwick Parkway – 5 minutes by taxi
Chiltern Line from London Marylebone

By Air
Birmingham Airport

Accommodation/Tourist Information
Warwick Tourist Board +44 (0)1926 492212

The Phyllis Savage Collection



In the 1970s, Phyllis Savage's Aunty Dot gave her a decorated silver thimble. The beautiful little object fascinated her, and soon each weekend was devoted to taking Mum to antique fairs and curio shops in search of more. When Elaine Gausson started the Dorset Thimble Society in 1985, Phyllis was one of four founder members. She became a committee member and their librarian for many years. Phyllis loved the Society; it was something that she did for herself, not as someone's wife or mother. She made many friends there and hopefully some pieces will find their way into the collections of other Society members on the day of the auction.

In the early days the meetings were held in the members' houses, moving to hotels as the Society grew. Once dealers began to join, Elaine and Phyllis had fun vying with each other to see who could track down the loveliest Norwegian enamelled silhouette thimbles. Phyllis was also always on the lookout for a Royal Worcester William Powell painted thimble, and would give me instructions on how to identify them too, though I never found one for her, alas.

As many collectors do, she made the transition from collecting just thimbles to collecting sewing tools. Her interests were many and varied, and often did not coincide with her income as a nurse. When she retired in 1999, she had served 44 years as an SRN. She particularly loved sewing boxes, although she never managed to find one that was perfect enough for her tastes which was within her price bracket. She learned the essential skill of haggling, which did not come naturally to her, though many dealers grew to know her and like her, to respect her knowledge, and to appreciate her repeat business if they were fair to her. On a smaller scale she became interested in Stanhopes, pin cushions of various shapes and sizes, thimble and needle cases, and all the other types you will find in this catalogue. Phyllis would want collectors to enjoy these objects as much as she did, and to give them a new home and a new life.

Ruth Barlow, Phyllis' daughter

Mauchline Ware

1

Five pieces of Mauchline ware, comprising; a bottle form thimble case with reel and needlecase (Lyndhurst Church), 8cm, a skep form thimble case (Old Man of the Mountain), 4.5cm, a slant top and curved front thimble case (Sevenoaks Church), 3.7cm, a girdle form pincushion (Bournemouth From The Pier), 4cm, and a diamond form pincushion (Ruins of the Holy Ghost Chapel, Basingstoke), 7cm. (5)
(from the Collection of the late Phyllis Savage)

£80-120

See illustration on inside front cover.

2

Five pieces of tartan ware, comprising; disc form pincushion with oval photographic portrait (M'beth), 4.5cm, a heart shaped pincushion (Caledonia), 5.5cm, a tatting shuttle (Prince Charlie), general wear and loss to pattern and title, point a little rounded, 7cm, and two cylinder form thimble cases (Stuart), 3.2cm, and (Rob Roy), 3.6cm, both with silver thimbles. (5)

(from the Collection of the late Phyllis Savage)

£80-120

See illustration on inside front cover.

3

Five pieces of Mauchline ware, comprising; a girdle form pincushion (St. Mary's Church, Bridport), 4.7cm, a bottle form sewing companion (The Pier, Southport), with twin reel, needle cylinder and silver thimble, 9cm, a needlebook (Western Shore, Southampton), 7.5cm, a skep form tape measure (Sandown Bay, Isle of Wight), silk tape reduced, 5cm, and a disc form pincushion (Eastbourne Pier), 5.5cm. (5)
(from the Collection of the late Phyllis Savage)

£80-120

See illustration on inside front cover.

4

Five pieces of Mauchline ware, comprising; a reel box with pincushion top (Chapter House, Much Wenlock Abbey – photographic), 7cm, a disc form pincushion (Ryde Pier), 5cm diameter, a needlebook (Marina And Establishment, Ramsgate), 5.8cm, a slant top thimble box (Laxey Wheel, Isle of Man), blemishes to lid, complete with silver thimble, 4.3cm, and a thimble egg (Edinburgh Castle), 5.5cm. (5)
(from the Collection of the late Phyllis Savage)

£60-120

See illustration on inside front cover.

5

Six pieces of Mauchline ware, comprising; an umbrella form pincushion (Oswestry Old Church), 13cm, a shield form pincushion (Torrington Station/High Street, Torrington), 5.5cm, a tape measure (Dunolly Castle, Oban/Fingalls Cave, Staffa), tape complete but worn, 4cm, a cedar wood turret form tape measure (Vale of Keswick and Skiddaw), tape worn and probably replaced, 6cm, a seaweed ware barrel form thimble case with silver thimble, 5cm, and a black ground girdle form pincushion with floral transfer, 3.5cm. (6)
(from the Collection of the late Phyllis Savage)
£80-120

See illustration on inside front cover.

6

Five pieces of Mauchline ware, comprising; an umbrella form pincushion (Ann Hathaway's Cottage, Near Stratford-upon-Avon), 14cm, a barrel form thimble case in alternate woods (Guernsey), with early 19th century silver thimble, retailer's label to base, 6cm, a cylinder bodkin case (Esplanade, Dover), 9cm, a rectangular box with thimble and reel (South Parade, Deal – photographic) and a continental egg cup converted to a pincushion (Bar Gate, Southampton – manufactured abroad), 9cm. (5)
(from the Collection of the late Phyllis Savage)
£60-100

See illustration on inside front cover.

7

A rare Mauchline ware needlebook, without view, inscribed to cover "Warranted Made of The Big Tree of Kippenross Which Grew Near Auld Dunblane, Girth 42 Feet 7 Inches, Height 100 Feet, Aged 465 Years", interior near mint in blue silk with flannel. 6.5cm x 5.5cm
£30-50

See illustration on inside front cover.

8

An unusually large rectangular Mauchline reel box for James Chadwick (Hydro Estab: Crieff FB – photographic oval flanked by painted flowers), twelve reel spikes with bone apertures, interior in blue paper with printed label for J.C. – Eagle Mills ..., 21.5cm x 9.5cm x 5cm.
£40-80

See illustration on inside front cover.

9

An unusual Mauchline square reel box for Wm. Paton Ltd., with four complete original reels, titled lid with view of Johnstone Mills, sides for Paton's Cable Crochet Twist/Hand and Machine Cable Twist, lid interior with printed label featuring Johnstone Mill with four reel labels, complete with four unused and fully labelled wooden reels for Paton's Ceta 24 Machine Twist, 9.5cm x 9.5cm x 6cm.
£40-80

See illustration on inside front cover.

10

Four pieces of Mauchline ware, comprising; a turret form tape measure (Ann Hathaway's Cottage, Near Stratford upon Avon), printed tape commencing at 2 inches, 5.5cm, a barrel form thimble case (Made of Wood ... The Abbey Craig ... National Wallace Monument) with thimble, 4.2cm, a cylinder needlecase (Blackpool Pier), 5.5cm, and a disc form pincushion (Dundrenan Abbey/Castle Douglas), 4.7cm diameter. (4)
£40-80

See illustration on inside front cover.

11

A Mauchline ware needlebook/sewing companion, cedar wood (Druids Circle, Keswick), the red cloth interior near mint with flannels and three of four bone tools, 9cm x 6cm.
£30-50

See illustration on inside front cover.

12

Four pieces of Mauchline ware, comprising; a lidded saucepan as a thimble case (Ross Castle, Killarney – photographic), with silver thimble, 10cm, a bell shaped tape measure (Hursley Church, Winchester), printed tape commencing at four inches, 7.5cm high, a cylinder needlecase (N. D. De Delway ...), 7cm, and a large alternate woods disc pincushion (The Mansions, Bognor – photographic), 6.5cm diameter. (4)
£50-100

See illustration on inside front cover.

13

Three pieces of Mauchline ware comprising; a seashell and seaweed hexagonal reel box for Clark & Co., six numerical bone apertures, internal printed label with anchor trade mark, 11.5cm, a cylinder form Medlock tape casket (Sir W. Scott's monument, Edinburgh/Melrose Abbey), minor chips to varnish, printed label to base, 6.5cm, and a wool or silk ball holder (High Street, Elgin), bone top aperture, 8.2cm. (3)
£50-100

See illustration on inside back cover.

14

Four pieces of Mauchline ware, comprising; a classical finish rectangular reel box (Scott Monument, Edinburgh), hinges detached but complete, three division interior with internal printed label for Anchor Cottons, 11.2cm, a crenelated turret form reel box (Olney Church – photographic/Cowpers Summer House), single bone side aperture, 9cm diameter, a cylinder reel box (Bournemouth), three bone side apertures, 9 cm diameter, and a circular pincushion (Town Hall, Retford), 10cm diameter. (4)
£50-100

See illustration on inside back cover.

15

A Mauchline ware fortune telling circular reel box, black ground with colour print of two children to domed lid, the side "What is Your Fortune My Pretty Maid?", five script panels divided by Browns Patent spinner, internal printed lid label for Clark & Co., reel spikes lacking and tear to internal blue base paper, 10.5cm.
£40-80

See illustration on inside back cover.

16

Five pieces of Mauchline ware, comprising; a fern pattern wool ball on three bun feet, cord handle, 10.2cm, a kettle drum pincushion on three ball feet (Beachy Head Lighthouse), 6cm, a cylinder form box with pincushion lid (Marine Parade, Clacton on Sea), 7cm, and two black ground rectangular Anchor Cotton boxes (Entrance Top Pier, Southsea, Hants, with flowers/Forget Me Not), 7cm and 10.5cm respectively. (5)
£50-100

See illustration on inside back cover.

17

A good Mauchline ware crochet cylinder, complete, of waisted cylinder form (Margate – photographic), bone handled chuck, complete with six radially arranged hooks, 10cm.
£40-80

See illustration on inside back cover.

18

Four Mauchline ware pincushions in various finishes, comprising a very unusual disc form example with duck egg blue ground (St. Georges Park, Yarmouth), 4.8cm diameter, another floral (Hotel and Pier, Panmaenmawr), slight chip to edge, 5cm diameter, another in sepia fern ware, 3.3cm diameter, and a trefoil form example in coloured fern ware, 5.5cm. (4)
£50-100

See illustration on inside back cover.

19

Five pieces of Mauchline ware, comprising; a black ground reel box with domed lid (verse, flowers and wheat ears), three numerical bone side apertures, internal lid label for Clark & Co., 8cm diameter, a black ground heart shaped pincushion (floral ovals), 6cm, a sewing cylinder (Gloddaeth Crescent, Llandudno) with four division reel/needlecase/brass thimble, 8.5cm, a knitting needle cylinder (Eaton Hall, Chester), 16.5cm and a rectangular reel and thimble box (West Cowes, Isle of Wight), 6cm. (5)
£40-80

See illustration on inside back cover.

20

A large fern ware box of rectangular form, interior with colour printed label "The Acme Haberdashery Cabinet/Olney and Ansdan and Co. London", with view of Windsor Castle, one hinge broken, lacking tray, 24.5cm x 17cm x 6.5cm.
£30-50

See illustration on inside back cover.

21

A large rectangular Mauchline green tartan ware rectangular box, with internal lid label for J. and P. Coats, Ferguslie Thread works, 16.5cm, and an hexagonal reel box, black ground, lid with cupid, verse and flowers, six bone apertures, two defective, internal lid label for Clark & Co., 11.5cm. (2)
£40-60

See illustration on inside back cover.

22

A Mauchline ware needlebook (Burns Monument with fancy spandrels/Made of Wood Grown on the Banks of The Doon/Alloway Kirk), interior in red silk, faded to edges, 9.7cm x 7cm.
£30-50

See illustration on inside back cover.

23

A Mauchline ware needlebook (Burns Monument, Kilmarnock), red silk interior good, flannel with mothing, 9.2cm x 6cm.
£30-50

See illustration on inside back cover.

24

Five pieces of Mauchline ware, comprising; a crochet cylinder (Rhyl, North Wales/New Pier, Rhyl), lacking contents, 10.2cm, a disc form pincushion (Admiralty Pier, Dover), 4.6cm, another (Pensarn), 3.4cm, a cylinder needlecase (Norwich Castle), 9.5cm, and a note book (Luss Church), 7cm x 5cm. (5)
£60-100

See illustration on inside back cover.

25

Four pieces of Mauchline ware, comprising; a needlebook (Southport, Lancashire from the Pier/Promenade From The North, Southport), interior with flannels, frayed around edges, 8.5cm x 6cm, a disc form pincushion (Castle Green, Hereford/Hereford Cathedral), 5cm, another (Folkestone), 3.7cm, and a cylinder needlecase, (Bournemouth From the Pier), 8.2cm. (4)
£50-80

26

Four pieces of Mauchline ware, comprising; a circular reel box with domed cover and three bone side apertures (Burnt Island/Kirkbank Greenmount, The Point, Burnt Island), 8cm diameter, a disc form pincushion (Pwilycrochon Hotel, Colwyn), 3.7cm, another (The Abbey, St. Albans), 3.6cm, and a cylinder needlecase (Severn Bridge Near Chepstow), 9.4cm. (4)
£50-80

27

Four pieces of Mauchline ware comprising; a slant top and curved front thimblecase (Britannia Pier, Yarmouth), 3.6cm, a girdle form pincushion (Tichborne House), 4cm, a disc form pincushion (Waterhead, Windermere), 5cm, and a needlebook (Cora Linn), green silk interior with flannel, 5.5cm x 4cm. (4)
£50-80

28

Four pieces of Mauchline ware, comprising; a tatting shuttle (Laxey Wheel, Isle of Man), 7.5cm, a heart shaped pincushion (Tonbridge Castle/Tonbridge Grammar School), 5.5cm, a disc form pincushion (Arrochair, Loch Long), 5.5cm, and a cylinder needlecase (The Toad Rock, Tunbridge Wells), 9.6cm. (4)
£80-120

29

Six pieces of Mauchline ware, comprising; a wool ball holder on cord (The New Clock Tower, Weymouth), 9.2cm, a dome top reel box with cord handles (Panorama View, Barmouth), one end of lid lacking, 8.4cm, a cylinder ribbon box (Ryde Pier/Black Gang Chine, Isle of Wight), 5.5cm, a reel cradle (Glasgow Green and Suspension Bridge), 11.2cm, and two knitting needle cases (West Cliff, Bournemouth), 19.7cm and (Pier, Blackpool, Lancashire – continental), pine, 21.7cm. (6)
£60-100

30

Five pieces of Mauchline ware, comprising; a large bellow form pincushion (Beach Head Lighthouse), s.d., 18cm, a wool ball on cord (Scott Monument, Edinburgh), feet replaced, 10.5cm, a pail form reel box (Importe Carternet), losses to handle mount, 8cm, a dome top reel box with cord handles (Dane John, Canterbury), 8.4cm, and a knitting needle case (St. Mary's Church, Eastbourne), 19cm. (5)
£60-100

31

A Tartan ware tatting shuttle (Prince Charlie).
£40-80

32

Two pieces of tartan ware (M'Lean), comprising a cylinder form standing pincushion, 3cm, and a needlebook in shell and seaweed, leather spine, red silk interior, with a few paint spots, 6cm x 4.5cm. (2)
£40-80

33

Two pieces of tartan ware, comprising; a diamond form pincushion (M'Pherson), 6.5cm, and a needlebook (Stuart), leather spine, floral paper lining with flannels, 5.5cm x 3.6cm. (2)
£50-100

34

Three pieces of Mauchline ware, comprising; a rectangular reel box in the toys and games pattern, internal Clark & Co. Anchor Cotton label, 10.5cm, a matching circular triple reel box with domed cover, lacking bone inserts, 8.2cm, and a similar example in basket weave pattern, internal label for Clark & Co. Anchor Cotton, 8cm diameter, all with wear or minor loss. (3)

£50-100

35

Two pieces of Mauchline ware, comprising; a tartan ware needlebook (Stuart with applied 'sculpture'), leather spine a little worn, gold on black label to rear board "J. English and Co's Needles", 5.5cm x 3.5cm, and a small notebook (Pevensey Castle/The Wish Tower, Eastbourne), gilt clasp, hole to red leather spine, 6cm x 4cm. (2)

£30-50

36

A good cedarwood drum form tape measure (Crommock and Buttermere Lakes), complete printed tape strengthened at start, spindle winder, the base with printed green ground label "Hogarth And Hayes -Floral and Cedar Goods Manufacturers, Southey Hill Pencil Works, Keswick, Cumberland", 6cm high.

£30-50

37

Three pieces of Mauchline ware, comprising; a wool bowl with shaped edge (The New Pier, Skegness), 8.5cm diameter, a rectangular money box (Colwyn Bay), 10.2cm, and a two division cottage painted reel box, very worn, 8.7cm. (3)

£20-40

38

No lot

39

No lot

40

Mauchline Ware: The Imitable Strap, handle with Royal coat of arms, W. & A. Smith, Maker to His Late Majesty, 20.5cm.

£60-100

41

A very unusual Mauchline ware notebook/diary, the boards of heavily wormed and filled oak, within a dark border and inscribed to the front board "Warranted Part of the Barn Roof of Mossiel While Occupied by Burns", interior with titled tablet "Notes" and opposing tablet titled Monday to Saturday, the back board with a verse "The threshers weary ...", pencil closure, leather spine, 10cm x 7cm.

£50-100

42

Two Mauchline ware wooden hinge snuff boxes, comprising; a rectangular example "When Shall We Three Meet Again" (the donkeys divided by a fence), foil interior, 6.4cm x 4cm, and a smaller example "Poor Smith Can't Find His Machine", foil interior with indistinct maker's mark, 4cm x 3.2cm. (2)

£80-120

43

Two pieces of Mauchline ware with rare finishes, comprising; a turned stickware dark and light wood baluster cup with scroll whitewood handle, decorated with a panel of fern ware in green, 5.8cm, and a circular dish, green ground with floral transfer border (Lime Tree Walk, Stanhope), 11.7cm diameter. (2)

£40-80

See illustration on front cover.

44

Three pieces of Mauchline ware comprising; a large tumbler case of tapering cylinder form (Bath House, Hot Springs, Domanin, Te Aroha – Miss Allen, Stationer, Te Aroha – photographic), with fern decorated glass beaker and typed note concerning Te Aroha, 11cm, a photograph album (Ventnor/Ventnor From Upper Bonchurch – photographic) leather spine, 12.5cm x 9.5cm, and a rectangular hinged lid box (Holyrood From Calton Hill – photographic), the box fitted with lock, each short side with a narrow slot, replacement internal division, 14.5cm x 7.5cm x 6.5cm. (3)

£60-100

45

Four pieces of Mauchline ware, comprising; a slender vase (untitled high street view – photographic), 10cm, a rectangular box with sliding lid (La Plage de Langrune), 8.5cm, a book form box with pivoting compartment (Clunie Castle, Blairgowrie/Clunie Church, Blairgowrie – photographic), 9cm x 6.8cm, a large cylinder go-to-bed (Blarney Castle, Cork/Blackrock Castle, Cork Harbour), 8cm, and a dome top box of rectangular form with side drawer opening (Ben Arthur – The Cobbler – photographic) with printed fernware spandrels, 11cm x 4.5cm. (5)

£60-120

46

Four pieces of Mauchline ware, comprising; a rectangular photograph frame with oval aperture (Carisbroke Castle/Head of Shanklin Chine/Ventnor Looking East/Black Gang Chine, Isle of Wight), 12cm x 8.2cm, a cylinder box with bottle (Au Progres Maison His Chateau de Chantilly ...), 5.7cm, a rectangular box, plush lined, containing a compass (Filey From The Sands – photographic), 5.5cm, and a rectangular two division hinged lid box (Anvers, Place Verte and Cathedral), 8.3cm. (4)

£40-80

47

Four pieces of Mauchline ware, comprising; an easel form watch stand (Anne of Cleves House, Lewes), 14cm, a thermometer/watch hanger as a miniature barometer (Sherborne Church), 23.5cm, a square box (New Pier, Rhyl), containing sixteen numerical wooden counters, 9cm, and a circular box and cover (E. Tower of London From Tower Hill), continental, 7cm diameter. (4)

£40-80

48

Six pieces of Mauchline ware, comprising; an oval section box (New Parish Church of St. Nicholas, Sutton, Surrey), 8.5cm, a swivel notelet (The Pavilion, Brighton/New Grand Hotel), 8.7cm, a cylinder box (The Pavilion, Brighton), 7cm, a horseshoe shaped box fitted for a watch (Bournemouth Form West Cliff), 8.3cm, a barrel form go-to-bed (St. Peter's Church, Bournemouth/Interior St. Peter's ...), lacking bone mount, 6cm, and a cylinder box (Bank of Ireland and Trinity College, Dublin), 8.2cm. (6)

£50-100

49

Five pieces of Mauchline ware, comprising; a purse (Corbridge On Tyne), 6.5cm, a barrel form box in alternate woods (Pier Approach, Southend on Sea), 5.8cm, a cylinder box containing a scent bottle (Cuckfield), 5.5cm, a ring box of near oval section (Melrose Abbey – Made ... Abbotsford), 3.2cm, and a rectangular hinged lid box (Burn's Mausoleum, Dumfries – photographic), 4.5cm. (5)

£60-100

50

Four pieces of Mauchline ware, comprising; a cylinder go-to-bed (Tibbie Shiel's Cottage, St. Mary's Loch/Craig Burn Wood), bone mounts, 7cm, an oval section box (Shakespeare's House, Stratford upon Avon/Trinity Church), hinge a.f., 7cm, an alternate woods cylinder box (Ryde Pier – photographic), 8cm, and a circular box and cover (Esplanade, Aldeburgh), 4.6cm diameter. (4)

£40-60

51

Six pieces of Mauchline ware, comprising; a square crenelated turret form money box (Old Church, Bonchurch), 10cm, a rectangular box with slant front as a striker (Bournemouth Pier), 9.5cm, a spill vase (Shakespeare's House, Stratford upon Avon), slight crack at rear, 8.7cm, an egg form box (Grange From The Shore), 9cm, a napkin ring (Pwlycrochon Hotel, Colwyn), and a rectangular box (Penarth), three internal compartments, one hinge lacking, 11.5cm. (6)
£50-100

52

Seven pieces of Mauchline ware, comprising; a tumbler case (International Exhibition of Industry, Science And Art, Edinburgh, 1886), with fern etched tumbler, 7.4cm, a circular box and cover (Royal Pump Room, Harrogate), 7.4cm diameter, a rectangular hinged lid box (Ripon Cathedral – photographic), 9.5cm, a cylinder form box (Tunbridge Wells), 11cm, a rectangular hinged lid box (Shanklin Chine), 8.4cm, a rectangular box fitted as a watch case (Terrace and Shrubbery, Southend), 7.6cm, and an architectural form box (Market Day, Great Yarmouth/The Town Hall, Yarmouth), 9.5cm. (7)
£80-120

53

Six pieces of Mauchline ware, comprising; a small rectangular jewel box with tray (Tower and Wheel, Blackpool), 9.5cm, a box in the form of an egg cup and egg cover (Buchanan's Cottage, Rannoch), base section in alternate woods, 8.5cm, a spill vase of slender turned form (Reform Street, Dundee), 15cm high, a two division stamp box (Importe – Ussatles-Bains ...), 8.5cm, a rectangular box with lift-off cover (Hurstmonceux Castle), 6.5cm, and a circular spreading stand (Devonshire Place, Eastbourne), 9.7cm. (6)
£60-100

54

Five pieces of Mauchline ware, comprising; a curved blotter (Head of Shanklin Chine/Shanklin, Isle of Wight), 13cm, a cylinder ruler with pencil and eraser (Victoria Column and Park Gates, Bath), 28cm, a letter knife (Church of the Holy Trinity, Stratford upon Avon), 27.5cm, a cedar wood eraser marked in gilt "Mother", 8cm, and a letter rack (Canadian Lighthouse, Bob-ho Island Park/Steamer Columbia Bob-ho Route, Canada), 17cm. (5)
£50-100

55

Eight pieces of Mauchline ware, comprising; a barrel form money box (Folkstone Form The Pier Head), 7.5cm, an egg cup (Queen's Hotel, Eastbourne), 8cm, a tumbler (Dryburgh Abbey), 6.5cm, a tumbler case (East View of the Giants Causeway, Co. Antrim), with tumbler, 7.8cm, a vesta stand on dish base (The Pier, Southend), 10cm diameter, a napkin ring (Haddon Hall), a rectangular box (St. Matthew's Church, Redhill), 7.6cm, and a cylinder spill vase (Dinna Forget Pitnacree/Is there fore honest poverty ...), split, 8cm. (8)
£60-120

56

Two larger format Mauchline ware boxes, comprising; a rectangular glove box with lock, the lid with a bright colour print of birds nest and flowers inset (Aysgarth Upper Falls – photographic), with a pair of leather gloves, 26.5cm, and a rectangular pencil box (Harrogate), 23cm. (2)
£40-60

57

Three pieces of Mauchline ware, comprising; a miniature chest of two drawers (Hastings Castle/Queens Hotel/Pier/Carlisle Parade and Robertsons Terrace/The Beach), twin pillars, small dent to top moulding, broken and missing to back right corner, lacking feet, 14.5cm x 11cm x 12.5cm, and a playing card box (Old Village, Shanklin), catch lacking part, 11cm, and a rectangular hinged lid box (The Fish Market, Lowestoft), 11cm. (3)
£50-60

58

Six pieces of Mauchline ware, comprising; a dome top rectangular money box (Village of Kinloch Rannoch), damage to end flap, 10.2cm, a rectangular banded box (Clacton Looking East – photographic), 11.5cm, a cylinder form spill vase (Church of The Holy Trinity, Stratford upon Avon), 9cm, a cylinder box containing glass tumbler (Criccieth), 7cm, a barrel form vesta on circular base (Perth From Bridgend), burn to image, and a napkin ring (Life Boat House, Clacton-on-Sea). (6)
£50-100

59

Two Mauchline ware card cases, comprising; a shell and seaweed example, 10.2cm, and a black ground example (floral oval – Niagara River Below the Falls – floral oval), both with hinged covers, 10.5cm and 11cm. (2)
£40-60

60

Tartan and other finishes: Six pieces of Mauchline ware, comprising; a cribbage board with tartan rectangles and a fan of playing cards (Birham/Old House/Made of Dunkeld Wood/Duneld, McLean and Sons Publishers), 23cm, a tartan ware easel form watchstand (Buchanan), a whist marker, 6.8cm, a dome top casket (McLean – High Street, Grantown – photographic), 10cm, a small jewellery box (Leslie), 10.2cm, and a fern ware silhouette cheroot case, 11cm, most pieces a little worn. (6)
£80-120

61

Eight pieces of black ground Mauchline ware, comprising; a playing card box (five of clubs/flowers), 11.5cm, a money box (Thrift ... flowers), 7.4cm, a rectangular box (Albert Memorial, Manchester – flowers), 6.5cm, a cylinder box (Promenade Pier, Blackpool – flowers), 11.5cm, another, (The Toad Rock, Tunbridge Wells – flowers), 8.5cm, a circular dish (Head of Shanklin Chine – flowers), 8cm, a tumbler cup (Selbourne Place, Littlehampton – flowers), 5.4cm, and a circular box (flowers/ferns), 5.5cm. (8)
£50-100

62

Three larger pieces of black ground Mauchline ware, comprising; a slant top stationery box with tapering sides (Proprietary College, Cheltenham/flowers), retailer's label to base "J. Hill, Promenade, Cheltenham", 18.4cm max., a rectangular box with hinged lid (Havant – shop sign for White & Chignell – chemists/flowers), 15cm, and a crenelated turret form money box (Thrift/flowers), 10.5cm. (3)
£40-80

63

Five pieces of Mauchline ware, mixed finishes, comprising; a very large paper knife or page turner (A Wish/colour print), 28.5cm, a rectangular box (Toilet Powder/flowers), 13.7cm, another with hinged lid (Corn Exchange, Swindon/seashells and seaweed), 13.5cm, a black ground rectangular box (Black Gang Chine, Isle of Wight), 6.8cm, and another with domed hinged lid (Canterbury Cathedral/pansy and other flowers), 7.8cm. (5)
£40-80

64

An unusual Mauchline ware double spectacle case, with metal frame and purse form clasp (Hawarden Castle/Made From Tree Felled By The Right Hon. W. E. Gladstone/facsimile signature), blue cloth lined interior, with a pair of glasses, 14cm x 8cm.
£50-100

65

Two Mauchline ware card cases, comprising; a rectangular section example (Souvenir From North Berwick – North Berwick – photographic) between wavy gold/black lines (Tantallon Castle – engraving), 9.6cm x 4.5cm, the other of rectangular cushion form with hinged cover (St. Nicholas, Great Yarmouth/Yarmouth From Britannia Pier), 9.6cm x 5.4cm. (2)

£50-100

66

Four pieces of Mauchline ware, comprising; a whistle (Inveraray Castle, West Front), 7.5cm, a dome top circular box (Tibbie Shiel's Cottage, St. Mary's Loch/Craigie Burn Wood), 5.4cm, a circular box (Entrance to Rossall College), 4.4cm, and a good swivel notelet (Cottage In Which Burns was Born/Made of wood Grown on the Banks of the Doon/Alloway Kirk), 7cm x 4.5cm. (4)

£80-120

67

Seven pieces of Mauchline ware, comprising; a swivel notelet (Carnarvon Castle), 7.5cm, a bookmark (Bishop of Argyle's Church and House), 11.5cm, a comb case (Falls of The Garrralt, Braemar), 10.2cm, a circular box (Southampton Docks), 4.4cm, a rectangular hinged lid box (Silvren Springs, Wukesh, Wisconsin), 8.5cm, a pen wiper (The Cottage, East Grinstead/St. Swithin's Church ...), 5.8cm, and a napkin ring (Mayflower), slight loss. (7)

£50-100

68

Five pieces of Mauchline ware, comprising; a hinged dome top box (Bristol Cathedral, College Green/Church of St. Mary .../View From The Suspension Bridge), 7.5cm, a rectangular box (Portobello Pier), 6.5cm, another (East Beach, Felixstowe), worn, 5.7cm, a turned and waisted cylinder box (Gun Hill, Southwold), 9.5cm, and a letter knife (Londonderry), 21cm. (5)

£40-80

69

Eight pieces of Mauchline ware, for the French market, comprising; a hinged lid rectangular box (Ostende, Pavilion Du Roi Et Plage), 8.5cm, a rectangular box (Calais – Douvres), 7.7cm, an egg timer (Pierrefonds – Entree Cote De La Chappelle – "Importe" d'Ecosse), 7.5cm, a notebook (Le Havre L'Entree Du Port Au Moment de a Maree), some pages lacking, 8.5cm, a cylinder box (Dinant/Dinant Rocher Bayard), 13.5cm, and three napkin rings (Cherbourg L'Avant Port Et Le Quai de Caligny/Cherbourg Statue De Napoleon 1er et La Rade/"Importe" – Palais De Fontainebleau Cours Des Adieu). (8)

£80-120

70

A Mauchline ware book and two photograph albums, the Christian Year Birthday Book, spine in gilt cloth (Margate From Royal Crescent), 12cm x 7.5cm, a photograph album, leather spine (Ryde in unusual fern and ribbon frame/Shanklin Chine), six double-sided card mounts, 12.2cm x 9.5cm, and another (Lighthouse and Harbour, Littlehampton), chip to top right of back board, 12.5cm x 9.5cm. (3)

£60-100

71

Seven pieces of Mauchline ware, comprising; an egg timer in rectangular hinged cedar wood case with brass hanging mount (Crosthwaite Church), 10cm, a rectangular money box (St. Ann's Well, Malvern), 8cm, a pin hinge rectangular box (Ryde Pier/Osborne House/untitled view), 11cm, a spectacle case (Loch Katrine – Made of Wood From The Trossachs, bee joint marker), 15.5cm, a rectangular box (St. Mary's Church, Market Drayton), 8.5cm, a cylinder form go-to-bed (The Parade, Aberystwith), 7cm, and a lighthouse form box (Lower Sandgate Road, Folkestone), 10.5cm. (7)

£60-100

72

Seven pieces of Mauchline ware, comprising; a boat shaped lidded box (International Exhibition, Edinburgh, 1886), 12.5cm, a letter knife (St. David's Cathedral – Mendus St. David's/St. David's General View, Mendus St. David's), 28cm, a circular box (Rhyl Aquarium and Winter Gardens) 7.5cm, a square box containing numerical counters, one lacking (Pensarn), 9.2cm, a two division rectangular box (Dunkeld), 8.7cm, a cylinder ruler (The Harbour, Margate), 18cm, and a two division wall mounting letter rack (Life Boat House, Clacton-on-Sea/Wesleyans Chapel and Water Tower ...), 19.5cm. (7)

£80-120

73

Seven pieces of Mauchline ware, comprising; an alternate woods cylinder box (Peterborough Cathedral), s.d., 9cm, a letter knife (The Regent Moray's Pulpit, St. Duthus Church, Tain/Murray Memorial Monument, Tain), 30.5cm, a cylinder ruler (Marine Terrace, Herne Bay), 17cm, a rectangular hinged lid box (The Royal Malvern Wells Spa, Malvern/Marvelous Water), 8.5cm, a two division rectangular stamp box (Bournemouth Pier), 8.2cm, a lighthouse form box (Pevesney Castle), 10.2cm, and a sliding and folding watch stand (Invalids Walk, Bournemouth), 7cm. (7)

£80-120

74

Seven pieces of Mauchline ware, comprising; a cylinder box (Laxey Wheel), 12.6cm, a circular box (Reid Hall, Forfar), 7cm, a napkin ring (Hotel De Ville De Calais), a rectangular watch box (Douglas Pier, Isle of Man), 8cm, a vesta book (From Nelson's Monument, Calton Hill, Edinburgh, 450 feet), 5.4cm, a circular box (The Popping Stone, Gilsund), 4.5cm, and a hinged lid rectangular box (Colwyn Bay Hotel, Colwyn Bay), 8.6cm. (7)

£80-120

75

Six pieces of Mauchline ware, comprising; an egg timer (St. Cadvans, Towyn Y Towyn From Railway), 8.6cm, a curved blotter (Promenade And Pier, Dover/Esplanade, Dover), 13cm, a circular box (Shady Glen Falls and Devils Oven, Catskill Mountains), 6.2cm, a dome top hinged box (Dover), 10.2cm, a letter knife (Whitehaven), 23cm, and a square section box (The Hall and Orwell Terrace, Dovercourt From the Sea), slight split to top section, 9cm. (6)

£50-100

76

Four pieces of Mauchline ware, comprising; a wheelbarrow (View From the Jetty, Yarmouth/Marine Parade ...), 19cm, a skep form go-to-bed (Black Gang Chine, Isle of Wight/Head of Shanklin Chine), bone mount a.f., 7.8cm, a tot glass box in alternate woods (Hesketh Crescent, Torquay), 7.5cm, and a wooden hinge rectangular snuff box, hinge a.f., (Don't You Wish You May Get It/dog and monkey), 8.2cm. (4)

£50-100

77

Six pieces of Mauchline ware, comprising; a pen dish (Filey From The Sands/The Crescent, Filey), chip, 27.5cm, a cylinder ruler (The Pier, Eastbourne/Splash Point), ends lacking, 20.5cm, another ruler in mosaic, 22.5cm, a rectangular hinged lid watch box (Corwen Church), 8.4cm, a cylinder go-to-bed (Abbotsford), 7cm, and a wall hanging twin letter rack (Ann Hathaway's Cottage, Near Stratford upon Avon/Church of the Holy Trinity, Stratford upon Avon), 19.5cm. (6)

£50-100

78

A large folio form desk blotter, of canted rectangular form (cover – Fir Croft, Uppingham/Uppingham, The Pavilion, Uppingham, within a fern and ribbon monochrome border – back The School House, Uppingham), a little worn, 31cm x 23.5cm.

£40-60

79

Four pieces of Mauchline ware, comprising; a tartan ware circular box (M'Farlane), 6cm diameter, a crochet hook (untitled), 11.3cm, a brown ground silhouette fern ware trefoil pincushion, and a small cardboard box "From John Bird and Company's Fancy Emporium, 42 and 43 Argyle Arcade, Glasgow ... Clan Tartan Wood/Scotch Pebble and Silver Goods/ ...", 5cm x 4.5cm. (4)
£50-100

80

Seven pieces of Mauchline ware, comprising; a circular dome top reel box (Ilkley Bridge – photographic), single bone side aperture, 7.5cm diameter, a cylinder box (Melrose Abbey/Made of Wood Grown on the Lands of Abbotsford), 8cm, another (Weston super Mare, From Knightstone Road), 8.5cm, a girdle form pincushion (Kilgreggan), s.d., 4cm, an unusual teapot form cotton reel box (floral transfer), internal label for "Chadwicks", 10.5cm, another of wall mounting form with hinged slanting lid (cottage print), internal label for Chadwicks (part lacking), 11cm, and a cylinder form box with pincushion lid (flowers and leaves on gold), 8.4cm. (7)
£50-100

81

A Tartan ware slant top thimble case (Prince Charlie/Taymouth Castle From the Port – photographic), blue velvet lined interior with silver thimble, 4cm.
(from the Collection of the late Phyllis Savage)
£40-80

See illustration on front cover.

82

A 19th century scimitar form paperknife, one side inlaid with figures in a sleigh pulled by bullocks, 30cm.
£20-30

83

A fine Mauchline ware pen and ink sewing box by C. Stiven , Laurencekirk, circa. 1830, of rectangular form and extensively decorated with titled views as follows;
to the lid Melrose Abbey, the front Rosslyn Castle, the back Abbotsford, the sides Castle of Crookstone and Linlithgow Palace, the lid with a full length wooden hinge.
The interior with damaged mirror within inset stained frame above a compartmentalised and lidded tray fitted with two red velvet pincushions and seven lids each with a titled pen and ink view ; Lochleven Castle ,Linlithgo Palace, Craigmillar Castle, Crookstone Castle, Caerlavorr Castle, Borthwick Castle, and Crichton Castle, each of the lids with twin turned ivory knobs, two lacking.
Stamped either side of the brass lock- C . Stiven/Lau.Kirk, split to back top edge of lid.
30.5 x 20.5 x 10cm.
£500-1000

See illustration on front cover.

84

No lot

Reference Books

85

Thimbles: An extensive collection of eighteen volumes, including: Jo Anne Rath – Antique and Unusual Thimbles; Edwin F. Holmes – Thimbles and A History of Thimbles; Gay Ann Rogers – American Silver Thimbles; Helmut Grief – Talks About Thimbles; Mathis – Thimbles; Royal Crown Derby – A Collection of Thimbles; McConnell – three volumes; John J. von Hohelle – Thimble Collectors' Encyclopedia, three various copies, and five others. (18)
(from the Collection of the late Phyllis Savage)
£50-100

86

Holmes (E. F.): Thimble Notes and Queries – commencing with Number 1 (Winter 1988) to Number 20 (Autumn 1993), with supplements and indexes, in an unrelated binder.
**These notes are hard to find, they were privately printed and circulated by Holmes to a selected few.*
(from the Collection of the late Phyllis Savage)
£20-40

87

Small format publications mostly relating to thimbles, including; T. C. I., Shire, John J. von Hoelle, Di Pelham Burn, Elizabeth Aldridge – Thoughts on Thimbles, Norma Spicer, Ann Blakeslee Black and others. (30)
(from the Collection of the late Phyllis Savage)
£20-30

88

Small format publications relating to sewing tools, including; Shire, Jull, Di Pelham Burn, etc., catalogues, etc. (30)
(from the Collection of the late Phyllis Savage)
£20-30

89

Brears (P. C. D.): The Knitting Sheath, 1981-82, 40pp.
(from the Collection of the late Phyllis Savage)
£15-25

90

Sewing Tools, including; Gullers – Antique Sewing Tools and Tales; Thompson – Sewing Tools and Trinkets; Proctor – Needlework Tools and Accessories; Rogers – An Illustrated History of Needlework Tools; Horowitz and Mann – Victorian Brass Needlecases; Austen – Tunbridge Ware; and others. (13)
(from the Collection of the late Phyllis Savage)
£30-50

91

Sewing Tools, including; Cummins and Taunton – Chatelaines; Rath – Antique and Unusual Thimbles; Taunton – Antique Needlework Tools; Groves – The History of Needlework Tools; Lawson – Charles Horner of Halifax; and others. (13)
(from the Collection of the late Phyllis Savage)
£30-50

92

Dorset Thimble Society, including; At Your Fingertips, numerous issues in binders and loose; The Thimble Society – numerous issues in binders and loose; The Thimble Guild – numerous issues in binders from 1983; and two framed thimble prints. (qty)
(from the Collection of the late Phyllis Savage)
£20-30

93

Holmes (E. F.): Thimbles and A History of Thimbles; Rogers (G. A.): American Silver Thimbles; Taunton (N.): Antique Needlework Tools And Embroideries; together with past auction catalogues for Bonhams and Bleasdales Ltd., and various small format publications and TSL issues.

(qty)

19

£30-40

94

Taunton (N.): Antique Needlework Tools And Embroideries; Rogers (G. A.): An Illustrated History of Needlework Tools; Thompson (H. L.): Sewing Tools and Trinkets; two volumes on lace and two others. (8)

19

£20-40

95

No lot

96

No lot

Tape Measures

97

Four vegetable ivory tape measures, comprising; three barrel form examples with bone spindles, one inscribed in ink "Scarborough", lacking Stanhope, another lacking Stanhope, and one with Stanhope (6-view souvenir of Ingleton), and a pear form example with Stanhope (four untitled views), the first lacking tape, the others all with printed tapes, largest 5.2cm. (4)

£40-80

98

A novelty white metal tape measure in the form of a pair of binoculars, wound from the base of one lens, complete printed tape in inches and centimetres, marked "Made In Aust." and marked to base "Pat Appl. For No 11937", 4.5cm high.

(from the Collection of the late Phyllis Savage)

£50-100

99

Three good 19th century ivory tape measures, all of acorn form, with spindle winders, comprising; a carved and engine turned example, slightly reduced green silk printed tape, 4cm, another with carved cap, replacement tape, 3.5cm, and a plain nicely turned example, replacement printed tape commencing at 12cm, 4.8cm. (3)

(from the Collection of the late Phyllis Savage)

£80-120

100

A gilt metal novelty tape measure in the form of a Swiss water mill, complete retractable printed tape in inches and centimetres, 4cm high.

(from the Collection of the late Phyllis Savage)

£50-100

101

A Dean's rare printed cloth folded 35 3/4 inch tape measure, one side colour printed with young children at play, inscribed "Dean's Toy Tapes Copyrighted", the reverse with Trade mark and "Dean's Rag Book Co. Ltd., London/Entirely British Manufacture/Produced on Dean's "Washphast" Printing Cloth", 10cm x 2.5cm, folded.

(from the Collection of the late Phyllis Savage)

£50-100

102

A white metal novelty tape measure in the form of a lady's shoe, blue velvet inset worn, the bow with glass boss and engraved below "Jane", the complete printed tape in inches and centimetres, wound by a handle below, 9cm.

(from the Collection of the late Phyllis Savage)

£30-50

103

Two bone and vegetable ivory tape measure/needlecases, one with replacement tape and Stanhope (multiple views – Souvenir of Bournemouth), the other "Paris Plage", tape within and Stanhope (Paris Plage – four views), slight chip to base, 10cm and 11cm. (2)

(from the Collection of the late Phyllis Savage)

£40-60

104

A brass novelty tape measure in the form of a seated pig, printed tape in inches and centimetres, commencing at 12 inches, wound from the base, 5.5cm high.

(from the Collection of the late Phyllis Savage)

£30-50

105

Three plastic novelty tape measures, comprising; a jockey cap, 4.8cm, a galleon, 6cm, and a basket of flowers, all with complete printed tapes, last worn. (3)

(from the Collection of the late Phyllis Savage)

£50-100

106

Three brass novelty tape measures, comprising; an iron with agate 'insulator' to handle, complete printed tape in centimetres and inches, 6.5cm, a beer stein with thimble holder upper section, complete printed tape in centimetres and inches, marked "London – Made in Austria", 4.7cm, and a tortoise embossed "Pull My Head But Not My Leg", printed tape in inches, 6cm. (3)

(from the Collection of the late Phyllis Savage)

£60-120

107

Five tape measures, comprising; a plastic basket of fruit, 6cm, a metal barrel "Wm. Youngers – Empire Exhibition, Glasgow, 1938", 4cm, a drum form example with cat's head and advert for Sternot Oils, 3cm diameter, and two others, all with tapes. (5)

(from the Collection of the late Phyllis Savage)

£60-100

108

Three tape measures, comprising; a red stained bone example as a turret, silk tape incomplete and faded, 3.5cm, a bone acorn form example, printed tape commencing at 2.5 inches, 4cm, and a mother-of-pearl and gilt metal bird cage example, printed silk tape commencing at 11 inches, 2.5cm. (3)

(from the Collection of the late Phyllis Savage)

£50-100

109

Three wooden tape measures, comprising; an unusual lignum vitae example in the form of a pear, complete printed tape, 5cm, a hardwood skep form example with ivorine mounts, incomplete tape commencing at 7 inches, and a cylinder form rosewood example with inset carved bone top with complete inked silk tape, 5.5cm. (3)

(from the Collection of the late Phyllis Savage)

£60-120

110

Four tape measures comprising; a silver example of reeded drum form with coffee grinder handle, on chain suspension, lacking tape, 2.5cm diameter, a cylinder form example with star decoration, winding handle and spindle possibly replaced, 4cm, a white metal drum form filigree tape in inches and centimetres, 2.5cm diameter, and a hem measure, initialled "G" and stamped "Sterling", 11cm. (4)
(from the Collection of the late Phyllis Savage)
£50-100

111

Four tape measures comprising; a wooden barrel form example, decoration worn, complete tape printed in centimetres, 5cm, and three vegetable ivory examples, an acorn with complete but faded tape, 5cm, a vase form example, tape a.f., 5cm, and a pierced cylinder form example, tape incomplete, 3.2cm. (4)
(from the Collection of the late Phyllis Savage)
£50-100

112

Four vegetable ivory tape measures, comprising; an unusual combination tape/reel holder, complete printed tape, the spindle winder with Stanhope (Crystal Palace – single view), 7cm, a pierced acorn example, lacking tape, 6cm, a barrel form example, complete but faded tape, 5cm, and a vase form example, tape a.f., 6cm. (4)
(from the Collection of the late Phyllis Savage)
£50-100

113

Five vegetable ivory tape measures and a wooden example, comprising; a vase form example, printed tape commencing at 3 inches, a pierced barrel with complete but faded tape, spindle with Stanhope (Cardiff Exhibition, 1896 ...), 5cm, another with replacement tape, 5cm, two cylinder form examples, one with incomplete tape, one with replacement, 5cm and 3.5cm, and a wooden barrel form example, inscribed "La Baule", with transfer, complete printed tape in centimetres, spring winder with Stanhope (La Baule – two views), 4.7cm. (6)
(from the Collection of the late Phyllis Savage)
£80-120

114

A silver tape measure and basket pincushion, by Joseph Taylor of Birmingham, circa 1820, the tape measure of cylinder form decorated with thistles, roses and shamrock, tape within, 2.7cm, the pincushion of basket form decorated with flowers over a trellis pattern, maker's mark to underside of handle, 3.5cm high. (2)
(from the Collection of the late Phyllis Savage)
£50-100

115

An unusual bone tape measure in the form of a windmill or tower, with pierced sides, spindle wind with complete printed green silk tape, chip to one corner of roof, 5cm high.
£30-50

116

Five tape measures, comprising; a plastic standing pig, complete printed tape in inches and centimetres, 7cm, a vase form vegetable ivory example, printed tape commencing at 25cm, 4.2cm, another of acorn form with pierced decoration, complete printed tape in inches, 5.5cm, another lacking tape and spindle, and a bone and vegetable ivory combination tape measure/needlecase, tape lacking, spindle wind with Stanhope (Souvenir of Folkestone – five views), base of needlecase lacking, 10.5cm. (5)
£50-100

117

Three metal novelty tape measures, comprising; a copper and brass coffee grinder, complete printed tape in inches and centimetres, 3.7cm high, a copper smoothing iron example with agate insulator to handle, complete printed tape in inches and centimetres, 5.5cm, and a brass mandolin, complete tape printed in inches and centimetres, 7cm. (3)
(from the Collection of the late Phyllis Savage)
£60-120

Pincushions and Pin Retainers

118

An unusual Georgian pincushion modelled as a bow front chest of three drawers, in red grained morocco paper, with gilt foil dividers and 'handles', on vegetable ivory bun feet, 7cm x 5.5cm x 3.5cm.
£50-100

119

Four pincushions formed from halves of natural walnuts, linked by coloured ribbons and bows, united by a suspension hook, 30cm. (4)
£20-30

120

An unusual pincushion in the form of a basket, modelled from a walnut shell and mounted on a painted card base, 4.5cm.
£20-30

121

A large beaded pincushion with feathers and flowers, in the American Indian style, 25cm, two others, one decorated with anchors, crowns, etc., the other inscribed "Ever True", another with beaded border and pin stuck "MG 1889", and a small rectangular box worked in beadwork. (5)
£30-50

122

A group of large material pincushions, comprising; two floral printed examples, another painted with children, a shoe form example, an example in the form of a cat, a pin stuck example "Happy Christmas", 20cm x 17cm, another, "Think of Me 1911", 17cm x 15cm, four others and two in the form of seated dogs, both incorporating tape measures to their mouths. (15)
£30-50

123

An early 19th century rosewood table pincushion of sarcophagus form, the base fitted with a drawer, 14.5cm.
£20-40

124

A mother of pearl and gilt metal moulded double pin pannier, mounted on a donkey, on mother of pearl domed base, 5.8cm.
(from the Collection of the late Phyllis Savage)
£40-80

125

A rare printed and colour painted silk pin wheel, one side with a part globe form map of the world, titled "Asia", the reverse titled "Asia" with a description of the continent, ribbon suspension, excellent condition, 5.5cm diameter.
(from the Collection of the late Phyllis Savage)
£100-200

See illustration on front cover.

126

A turned oak relic pincushion of disc form, one side stamped to the centre with cross keys and “York Minster 1829”, 5.5cm diameter. *York Minster was subject to an arson attack in 1829* (from the Collection of the late Phyllis Savage)
£40-60

127

A bone disc form pincushion, with Stanhope (Memory of Ilfracombe – 6-view), one side plain, one with engine turned decoration, 3.8cm diameter. (from the Collection of the late Phyllis Savage)
£50-100

128

Three pincushions and an emery, comprising a bone pierced side wheelbarrow, cracks to wheel, 5.5cm, a mother of pearl disc form example, 3.5cm diameter, a turned wooden pin poppet with worn painted decoration, 5cm, and a knitted strawberry emery, 3cm. (4) (from the Collection of the late Phyllis Savage)
£60-120

129

A 19th century silver pincushion in the form of a recumbent cow, lightly engraved coat, blue velvet infill, marked with lion passant, crown and makers mark H. W. & Co., 6cm. (from the Collection of the late Phyllis Savage)
£200-400

130

A paper colour printed disc form pin wheel in the form of a globe form map, one side inscribed in ink “To Annie Wishing You a Merry --”, by M. and Y., 6cm diameter. (from the Collection of the late Phyllis Savage)
£30-50

131

Seven emeries and pincushions, comprising; a heart-shaped American Indian beadwork example, 8.5cm, a brown velvet lady's boot embellished with beadwork, 9cm, a large strawberry emery, 8cm, a disc form material pincushion applied with paperwork, 5.5cm, another plain, 5.5cm, a diamond form example with bead tassels, 5cm, and a silk rectangular pincushion with pin stuck initials “P.C.”, 5.5cm. (7) (from the Collection of the late Phyllis Savage)
£50-80

132

Three pincushions, comprising; an example formed from a muscle shell, with gilt mounted suspension loop, 8.5cm, another natural shell example, 3.8cm, and a heart-shaped mother-of-pearl example inscribed “Souvenir de Dunkerque”, 4.7cm. (3) (from the Collection of the late Phyllis Savage)
£40-60

133

Seven pincushions, comprising; two printed playing card examples, 4.6cm, a turned and carved bone roundel form example, 4cm diameter, a steel acorn form example, 4.6cm, a vegetable ivory urn with floral embroidered cushion, 4cm, a carved wooden boot, 5cm, and a turned wooden acorn form pin poppet, 4.5cm. (7) (from the Collection of the late Phyllis Savage)
£50-100

134

Six pincushions and emeries, comprising; a Cantonese carved ivory example of star form, each side carved with figures and trees, 5cm, a vegetable ivory basket form example with circular side handles, 3.5cm, a hexagonal example with printed card mounts “A Joyous New Year”, 5.5cm, a heart shaped example with white metal leaf scroll mount, cushion worn, 3.5cm, a leather pumpkin, 4cm, and a knitted strawberry emery, 3cm. (6) (from the Collection of the late Phyllis Savage)
£40-80

135

Two bird form white metal pincushions, comprising; a silver chick with London hallmark and 925 stamp, 2.5cm, and another bird, possibly a quail, stamped 925 and with additional marks, 5cm. (2) (from the Collection of the late Phyllis Savage)
£50-100

136

Two silver pincushions, comprising; a standing pig, Birmingham, 1903, 5cm, and a chick with a full set of indistinct hallmarks and registration number, 2.5cm. (2) (from the Collection of the late Phyllis Savage)
£60-120

137

Five pincushions, comprising; two carved bog oak cauldrons, 4.5cm, another in ebony in the form of a saucepan, 6.5cm, another as a crown with gilt metal frame, 4cm, and another formed from a natural walnut, 3.6cm. (5) (from the Collection of the late Phyllis Savage)
£50-100

138

Three reverse decorated glass disc form pincushions, comprising; an example with two titled panels, The New University Museum, Oxford/Wadham Col., Oxford, 5cm diameter, another, Shrewsbury Market, cracked, mirror to reverse, 4.8cm, and another commemorating Albert Prince of Wales, b.1841, and Princess Alexandra of Denmark, b.1844, cracked to both sides, 4.5cm diameter. (3) (from the Collection of the late Phyllis Savage)
£40-80

139

Four pincushions, comprising; a turned and pierced bone example of tapering cylinder form, 3.6cm, another turned bone example embellished with steel studs, 3cm, a bone disc form example with carved and pierced decoration, 4.5cm, and a turned fruitwood acorn form pin poppet incorporating a silver thimble, 6.5cm. (4) (from the Collection of the late Phyllis Savage)
£50-100

140

Five pincushions comprising; an ivory turned example as a pail, 3cm, a bone disc form example with pierced and carved decoration, 3.7cm, another in vegetable ivory with carved decoration, 3.6cm, a cream lacquered oval example, one side with engraved inset white metal leaf and scroll decoration, 5cm, and a knitted strawberry emery, 3.6cm. (5) (from the Collection of the late Phyllis Savage)
£40-80

141

Six silver or silver mounted table pincushions, comprising; a heart shaped example, Birmingham, 1886, 11cm, a ball form example on ebony base, a.f., 6.5cm, two circular examples, one in ebony with silver mount, 6cm diameter, an example converted from a stick mount, 6.5cm, and a modern silver example with gilded flower and leaf frieze, London, 1977, by H.O.L., 5cm diameter. (6) (from the Collection of the late Phyllis Savage)
£80-100

142

Six soft metal pincushions, comprising; three as lady's shoes, largest 11.5cm, a tortoise, 8.2cm, a bird, 8cm, and a canoe form example with shield plaque "Auditorium St. Joseph Mo.", 11cm. (6)
(from the Collection of the late Phyllis Savage)

£40-60

143

Five standing pincushions, comprising; a vase form turned olive wood example, 8.5cm, two vegetable ivory examples of pierced and turned vase form, with loop carrying handles, largest 8cm, another of girdle form, on turned bone pedestal, 7.5cm, and another in pierced and carved coquilla as a bucket, 7.5cm. (5)

(from the Collection of the late Phyllis Savage)

£50-100

144

Eight metal animal form standing pincushions, comprising; soft metal hedgehog, 6.5cm, a parrot, 4cm, a dog, 5cm, a donkey, 6cm wide, a seated pig, 4cm, a bear, 5.5cm, a silver plated standing pig, 4cm, and a brass pig, 6.5cm. (8)

(from the Collection of the late Phyllis Savage)

£80-120

145

A group of mostly larger format pincushion, including; soft metal shoe with dog, 9cm, a plated standing pig, 7cm, two modern metal pincushions, two circular ebony examples, and thirteen various, some modern. (19)

(from the Collection of the late Phyllis Savage)

£50-100

146

A silver pincushion in the form of a hedgehog, Birmingham, 1905, by A. and L L., 4.5cm

£60-100

147

A Victorian shell work pincushion and a similar needlebook, the pincushion of heart form, one side with titled colour print "A Present from Hunstanton", 10cm, the needlebook with a rectangular colour print, titled "A Present From Rhyl", 10cm x 7cm. (2)

£40-80

148

A needlebook in silk, beadwork and embroidery in the form of a strung harp, pink silk interior with double flannel, internal pencil note stating "This needlecase was part of the collection of Nerylla Taunton", 11.5cm x 8.5cm.

£30-50

149

Two ivory double ended pincushions, one in the form of an auctioneer's gavel with feather carved bands to the head, 4.4cm, the other of girdle form with feather carved bands, 3.5cm. (2)

£50-100

150

An ivory and gold pin poppet, circa 1780, of hexagonal tapering form with pique bands below a hinged curved top with inset circle, initialled "A.B.", internal blue velvet cushion, 5cm high.

£100-200

151

Three pincushions, comprising; an unusual yellow velvet example, centred by a bisque head of a child with glass eyes and open mouth showing teeth, cut floral border, 11cm square, a patchwork geometric pincushion, 6cm, and a printed card shield shaped pincushion, each side with a young girl and inscribed "A Joyous New Year", 6.5cm. (3)

£40-80

152

An ivory pincushion of disc form, one side well carved with a group of leaves, flowers and fruit, 3.7cm diameter.

£50-100

153

A painted ivory pincushion of rectangular form, each side with a dished oval recess, one side painted with a bee skep amid flowers, the other with flowers, 4cm x 2.5cm.

£50-100

154

Three pincushions, comprising; a book form example in card with a printed label "A Sister's Gift", red velvet infill, 6cm x 4cm, a disc form pincushion on chain, one side in brass with the face of a cat with glass eyes, the reverse with a mirror, 5cm, diameter, and a heart shaped mother of pearl example, one side with carved decoration, tip to back lacking, 4.7cm. (3)

£60-100

155

A pincushion book and a scissor case, the pincushion book with a petit point canvas panel of flowers to one side and a bird over a jardinière, both within pressed board covers with classical spandrels, silk spine, printed paper interior with pincushion, 7.5cm x 6cm, the scissor case of similar form with floral panels within a gilt tooled leather frame, with a pair of scissor, case 7.5cm x 5cm. (2)

£50-100

156

Two pinstuck pincushions, comprising; a circular example in a woven cane basket with ring side handles, inscribed "Welcome Little Stranger * Brecknock * 1846", 12cm diameter, the other rectangular on green velvet worked with a ribbon drape and initialled "L.G." within a heart and dated "1878", remounted, 15.5cm x 12.5cm. (2)

£60-100

157

A collection of pincushions and other pieces, formerly in the collection of Robert Warner, comprising; six square or rectangular tapestry examples, including a Union Flag, largest 7cm, three others, a circular pen wiper applied with beads, 7cm diameter, a ribbon form chatelaine with star pincushion, needlebook and crescent style emery, and a ceramic pincushion, 9cm. (12)

£50-100

158

A Regency lyre form pin retainer, the gilt brass frame with pin apertures and hanging loop, one side painted with a lyre with gilt pins for strings, 7cm high.

£40-80

159

Nine pincushions and related items, comprising; a carved and decorated disc form example, 4.1cm diameter, a bone and vegetable ivory girdle form example, 5cm, an Eskimo shoe form example, three others and three Berry pin cylinders. (9)

£40-80

160

Six pincushions, comprising; two pairs of soft metal lady's shoes, 10cm, a circular alabaster example, and a metal example in the form of a seated pig, 7cm. (6)

£40-60

161

Thirteen pincushions, larger format, comprising; a pair of soft metal brogue style lady's shoes, 13cm, another modern, an Eskimo style leather and needlework shoe, and nine material examples, mostly of square form, largest 9cm. (13)

£40-80

162

Thirteen pincushions, all in material and of larger format, including an embroidered red domed example in giltwood circular frame, on three scroll feet, 15cm diameter. (13)

£40-80

Sewing Boxes, Etuis & Companions

163

A Georgian 4-piece silver sewing set, the rectangular morocco leather case with a gilt floral tooled border to the lid, internal cream silk lid over a velvet lower section with tapering oval section needlecase, a silver thimble with engraved bands below an agate top, a ribbed and floral decorated thimble guard and a bodkin/earspoon, the paper base with ink inscribed dates "1849", "1887" and other inscriptions, 9.2cm x 5.2cm x 2cm.

£180-250

164

A fine quality late Regency rosewood sewing box of rectangular form and finely figured, initialled in brass wire to the lid "C.J.W.", the lid interior with ruched silk panel over a removable tray in green watered silk with two mother of pearl mounted needle books, mother of pearl waxer, emery, tape measure with original inked green silk tape, all with overhanging flowerhead tops, a set of six matching reel holders, a pair of matching mother of pearl circular boxes fitted centrally to a pair of lids, central fitted tool tray lacking tools, and two matched thimbles, the lock stamped "J. Bramah, 124 Piccadilly", 32cm x 23cm x 13cm.

£300-500

165

Two children's sewing boxes, comprising; a cardboard example for a child, in red and black print tartan, compartmentalised interior with original reels, needles, etc., 13cm x 10.5cm, and a late 19th century cardboard cased sewing compendium for a child or doll, the box with colour print of a child in a chair sewing, the box containing three miniature reels, German Queen Victoria needlepacket, miniature metal scissors and thimble, box 4.5cm square. (2)

£20-30

166

A mid-19th century rosewood and cut mother of pearl sewing box of sarcophagus form, the lid with floral and bird cut pearl panels with pewter lines and roundels, raised on bun feet, the interior in pink paper and silk with hinged lid panel over a compartmentalised and lidded tray, the printed inset base paper indicating Irish origin, 34cm x 25cm x 15.5cm.

£100-150

167

A folding maroon leather needlepacket and sewing set of purse form, for Sharps, bone needlecase, two mother of pearl tools, steel button hook and scissors, 9.5cm x 7.5cm.

£20-30

168

A fine rosewood and inlaid wire, mother of pearl and abalone shell sewing box, circa 1860, of rectangular form, the front and lid extensively decorated with roses, thistles, shamrock and leaves, initialled to the lid cartouche "D. J. B.", the interior with inlay to the internal edges and fitted to the lid with a fan form panel within a gilt tooled velvet surround, the compartmentalised and lidded tray in silver foil edged in blue paper with a full complement of fittings including a set of six mother of pearl reel holders with pierced tops centred by abalone shell bosses, matching tape measure (tape lacking), reel form waxer and emery, with a set of six Cantonese mother of pearl snowflake silk winders, silver thimble and finger guard, together with other tools and a pair of scent bottles, the tray complete with needlebooks, some lids with elaborate mother of pearl handles, 33cm x 25.5cm x 16.5cm.

£600-900

169

A sewing companion for a child in the form of a brown leather travelling bag, with pierced white metal bindings and handle, the catch engraved "Effie", the maroon silk interior with three bone tools, steel scissors and silver thimble, 12.5cm wide, 5.5cm high.

(from the Collection of the late Phyllis Savage)

£100-200

170

An early 19th century three piece silver sewing set, in rectangular tortoiseshell box, the silk and velvet lined interior with floral decorated girdle pincushion, a tall thimble initialled "DC", within an engraved frieze, and a floral embossed cylinder tape measure with petal form finial to winder, the complete green silk tape printed with leaf border, the lid interior with a pin applied paper slip inscribed in ink "brought by Mr. Kershaw, 1845", 6.7cm x 4.5cm x 2.5cm.

(from the Collection of the late Phyllis Savage)

£100-200

171

A leather cased 'Lady's Companion', in blue leather with gilt tooled decoration and 'titled' to the spine, the interior with tablet, folding morocco skein/tool card with two mother of pearl handled tools, silver thimble on needle packet drawer, silver pencil and folding knife, blade shortened, mother of pearl scales, box 9.5cm x 5.7cm x 3.8cm.

(from the Collection of the late Phyllis Savage)

£100-200

172

Four carved wood sewing companions in the form of Black Forest bears, comprising; a circular base example with provision for four reels, the standing bear as a thimble stand with pincushion pannier, 11cm, another as a seated bear, one paw with silver thimble, the other a bodkin, pincushion pannier, s.d., 9cm, and two thimble stands, largest 9cm. (4)

(from the Collection of the late Phyllis Savage)

£50-100

173

Five carved wood sewing companions in the form of Black Forest bears, comprising; a seated bear in the form of a thimble stand beside a pincushion, 13cm wide, another, the rectangular base with pincushion, two reel spikes and a seated bear as a thimble stand, 10cm wide, another on circular base incorporating a pincushion, the seated bear as a thimble stand, 6.5cm, a standing bear as a thimble holder, 8.5cm, and another bear, 5cm. (5)

(from the Collection of the late Phyllis Savage)

£50-100

174

Two cased sewing sets, comprising; a six piece white metal set with decorated mounts, in tapering leatherette case, 16cm, and a red leather cased set with needle packets and tools, some matched and lacking, 16cm x 16.5cm. (2)

(from the Collection of the late Phyllis Savage)

£30-50

175

A mid-19th century satinwood sewing box for a child, of rectangular form, the interior with flush fitted tray with a pair of bone star form winders (one a.f.), a needlecase, thimble and steel scissors, 12.2cm x 9cm x 5.4cm.

(from the Collection of the late Phyllis Savage)

£80-120

176

A good late 19th century ivory etui of rectangular rounded corner form, the flush fitted interior with silver gilt thimble with floral and twin shield frieze, and a pair of steel bladed scissors with decorated silver gilt arms and loops, gilt catch and hinge, 8cm x 4.7cm.

£100-200

177

A fine three piece set in mother of pearl, comprising; pincushion, emery and waxer, each of pierced disc form and initialled "M.G.", the pincushion inscribed "Think of Me When This You See", on ribbon suspension, 4cm diameter, the emery inscribed "A Gift From A Friend", 3.1cm diameter, and the waxer inscribed "Forget Me Not", 2.8cm diameter, very minor chip to back edge of emery, the pierced centres over red foil. (3)

£200-400

See illustration on front cover.

178

A mid 19th century brown leather and cut steel sewing companion, of square reeded form, with cut steel clasp, mounts and studs, the lid with inset mirror over an octagonal oil or scent bottle with white metal screw cover, steel scissors, turned crochet handle, four screw hooks, a stiletto and a needlecase, 10cm high, 5.5cm square.

£200-400

See illustration on back cover.

179

A mid-19th century Palais Royal style satinwood sewing box, the concave front with oval escutcheon below a serpentine top with central steel carrying handle and border of steel studs, interior mirror, lacking tray, on brass bun feet, 19cm wide.

£50-100

180

A mid-19th century rosewood etui of tapering form and oval section, the hinged lid inlaid with flowers, catch and all tools lacking, 12cm.

£30-50

181

A continental bonbonniere in marbled green paper, with gilt flowering jardinières unfolding to form two 'D' shaped compartments divided by a handle, each lid with a vivid colour print of figures in landscapes with agricultural implements, 24.5cm wide open.

£80-120

182

An unusual 19th century Italian steel sewing set, most pieces stamped "G.T.", made for Mariuccia Russo, contained in a tooled leather book form case fitted with three pairs of steel scissors, each pair with an heraldic shield and scroll pierced loops, two pairs with the name Maria Russo etched to the inner faces of the blades, one pair with "M. Russo" pierced within the design, 13cm, 13.5cm and 19cm, two folding knives, each pierced with heraldic shield and leaf scrolls, one with a single blade, the other three blades, 8.5cm and 9cm, three crochet hooks, each with heraldic shield and initialled "M.R.", a matching stiletto, 11.5cm, and a plain steel cylinder needlecase, 7.5cm, thimble lacking. The book form case titled to the spine "Souvenir A Mariuccia Russo" and further initialled "M.R.", the floral tooled boards with musical spandrels, the box opening both ways, to the reverse revealing a paper lined interior with two glazed frames and a set of four lidded compartments, case 27.2cm x 20.5cm.

** Please note several pieces in this set are damaged and a detailed condition report is available on request. It is likely that Mariuccia Russo was a 19th century opera singer. Compare this set with a scissor and knife set presented to the tenor, Francesco Tamango (1850-1904) by fans in Palermo after a performance of Un ballo in Maschera, illustrated in scissors by Massimiliano Mandel, Page 53, plate 79.*

£200-400

183

An unusual decoupage sewing box, circa 1820, the lid and sides with eleven figural subjects, internal and external, the lid with a border of fruiting vines, elements in pen and ink, the lid interior with a further print of a lady at her dressing table, the lower section lined in printed tartan style paper, unfitted and without provision for tray, 30cm x 20cm x 10cm.

£150-250

184

A rare card and blue ribbon sewing basket, circa 1850, formed from seven pencil drawn landscape panels, most featuring buildings, two panels fitted to the edge with pincushions, one as a thimble holder with silver thimble, one with bodkin card, one with scissors on a ribbon, below a silk and card carrying handle, central panel slightly mis-shapen, 21cm.

£100-200

185

A Victorian beadwork circular sewing box, the turquoise beadwork ground decorated with leaves and geometric devices, cord borders, padded interior below a buttoned lid, 18cm diameter.

£100-150

186

A small Palais Royal style rectangular sewing box, in stained burr ash, the canted lid decorated with borders of cut steel pins with a rectangular central mother of pearl inset initialled "A M H B", the interior with mirror to lid, the flush fitted green velvet lined interior lacking tools, 13cm x 8.5cm.

£40-80

187

A rosewood sewing box, circa 1840, of sarcophagus form inlaid to the top and front with mother of pearl flowers and scrolling pewter lines, raised on four bun feet, with ring side handles, the interior with ruched silk lid panel over a conforming compartmentalised tray, covered in floral gold lined paper with conforming silk lids and related fittings, with a set of six pierced and carved mother of pearl top reel holders, a similar waxer and tape measure, tape within, with a silver thimble, complete with key, 29cm x 22.5cm x 17.5cm.

£300-500

188

A Georgian burr yew wood and banded sewing box of basket form, with two sloping hinged lids, each to a separate compartment, over a rectangular base fitted with a drawer, the drawer with burr yew lids and boxes and fitted with Tunbridge whitewood line painted five-division reel and a box pincushion, with key, 34.5cm x 24cm x 17.5cm.

£300-500

189

An EPNS purse on chain, fitted as a sewing companion, of shaped outline, the interior lined in silk and fitted with a silver thimble and a pair of steel scissors, marker's mark R. & D. L., case 14cm.

£30-50

190

Two children's sewing boxes, late 19th century, comprising; a rectangular leatherette box inscribed to lid "Work Box", green cloth lined interior with tool card, with six bone tools below a mirror, 13cm x 9cm x 7cm, and a shallow paper covered box with bevel glazed lid with ruched blue interior, with four bone handled tools and steel bodkin, 11cm x 6.5cm x 2.5cm. (2)

£40-80

191

A late 19th century sewing companion, modelled as a handbag with plated frame and catch, on a curved handle, the purple silk interior near mint with standing 'A' form tool card with a full complement of six mother of pearl handled tools, two pairs of steel scissors and a bodkin, 17cm x 3cm max.

£80-120

192

Four late 19th century leather cased sewing companions of purse or wallet form, comprising; a brass frame example with 'knotted' leather handle, blue silk and plush interior, with three turned bone handled tools, 14.5cm x 7.5cm, another with five mother of pearl handled tools, steel bodkin and scissors to a blue velvet interior, 15.5cm x 7cm, another with five mother of pearl handled tools, steel bodkin and scissors to a blue velvet interior, 15.5cm x 7cm, and a tan leather wallet form example, blue silk skein holder and pincushion, minor wear, 9.5cm x 6.2cm. (4)

£50-100

193

A child's sewing companion to commemorate the 60-year reign of Queen Victoria, of rectangular form in cream card with oval portrait to lid in gilt frame, gilt corner spandrels and catch, the interior in red silk with four bone tools below an inset mirror to lid, mirror with patches of distortion, 13.2cm x 8cm x 4cm.

£50-100

194

Two late 19th century leather sewing companions, comprising; a black leather dome top trunk form example with brass bindings, leather carrying handles, gilt brass latch and end bosses, the green silk lined interior with steel scissors, tweezer/earspoon, bodkin and three other tools, 21cm x 7cm x 7.5cm, and another, rectangular, in blue morocco, faded velvet tool card with a selection of pearl, bone and steel tools below a ruched purple silk lid panel with needle packets, 19.5cm x 13.2cm x 5.5cm. (2)

£60-100

195

Three late 19th/early 20th century leather covered sewing companions, comprising; a tan leather rectangular example with brass frame, tubular lid handle, interior in blue silk with five bone accessories, 14.5cm x 7.5cm x 5cm, another in crocodile, brass frame with five tools, a/f, 13.5cm x 9cm, and a black leather example with green silk and velvet interior with a set of seven tools with carved mother of pearl handles, and five other fittings, 18cm x 11cm x 3.5cm. (3)

£60-100

196

Four late 19th/early 20th century sewing companions, comprising; a rectangular form leather example with seven tools and accessories to velvet and silk interior, 16cm x 11cm, two similar sets, and another in green plush, 18cm. (4)

£50-100

197

Three late 19th/early 20th century sewing companions, comprising; a rectangular cut corner example in black leather, lid inscribed in gilt "Emily", blue velvet interior with nine accessories (knife replaced), 19cm x 12cm, another in tan leather with green velvet and silk interior, 20cm x 13cm, and another in red morocco finish, plush velvet and silk interior, 18.5cm x 13.5cm. (3)

£80-120

198

Four early 20th century sewing companions, comprising; two rectangular leatherette examples, another of shaped outline, and a red plush folding example, all with a selection of tools, largest 17cm x 16cm. (4)

£40-80

199

Five sewing cases and tool cards, comprising; a red leather folding rectangular example by "Lockwood and Co., 75 New Bond St., W", 24cm, another with skeins, tools and other fittings, 20cm, another in black leather with reel holder, 16.5cm, and two black leather tool cards with mother of pearl handled tools, 12cm and 14cm. (5)

£40-80

200

Fourteen various sewing companions, comprising; seven in leatherette, four in plush, a leather wallet form example and two others, most with a selection of tools, largest 19.5cm. (14)

£30-50

201

A Victorian burr wood rectangular sewing box, the lid and front banded in tulipwood with bone and mother of pearl spandrels, escutcheon and central lid inlay, interior with ruched silk lid panel over a lidded and compartmentalised tray, 30cm x 22.5cm x 15cm.

£50-100

202

A mid-Victorian rosewood rectangular sewing box, the lid and front with pewter lines and cut mother of pearl floral decoration, the attractive interior in starred yellow paper, with ruched silk lid panel within a gilt tooled leather frame, over a conforming tray with tooled leather lids, fitted pincushions and needlebook, with a set of six mother of pearl top reel holders, matching waxer, emery and tape measure, and a few tools, 30cm x 22.5cm x 13cm.

£150-200

203

A mid-Victorian rectangular sewing box, the ebonised ground inlaid to the lid and front with mother of pearl and abalone flowers within a pewter line border with brass corner scrolls and mother of pearl leaves, the attractive interior with blue silk radiating lid panel centred by an oval watercolour of a house, over a lidded and compartmentalised foil paper tray with blue silk lids, needlebook and pincushions, with a set of eight floral carved top mother of pearl reel holders, two thimbles and a few tools, 30cm x 23cm x 2.5cm.

£200-400

204

A mid-Victorian rectangular sewing box, the figured walnut ground with geometric inlaid borders to the front and lid with mother of pearl escutcheon and lid plaque, the attractive interior with buttoned green silk lid panel over a conforming compartmentalised foil paper tray with conforming silk lids, pincushions and needlebooks, with three mother of pearl tools, 28cm x 20cm x 15cm.

£50-100

205

Two mid-Victorian walnut rectangular sewing boxes, one with domed lid and Tunbridge style mosaic borders, bone escutcheon and lid shield, interior with ruched red silk lid panel over a paper foil lidded and compartmentalised tray with conforming silk lids and fittings, 28cm x 20cm x 15cm, the other with multi-coloured feather and block inlay bandings to the front and lid, the interior with ruched red silk lid panel over a paper covered lidded and compartmentalised tray with conforming red silk lids and fittings, 25cm x 18cm x 11.5cm. (2)

£80-120

206

Two mid-Victorian rectangular sewing boxes, comprising; a burr walnut dome top example with mother of pearl and abalone shell geometric escutcheon and lid panel, the latter engraved "M. Agar, Dec 23rd, 1875", the interior with quilted blue silk lid panel over an open centre compartmentalised and lidded tray, 29.5cm x 22.5cm x 13.5cm, the other in walnut with geometric inlaid bands, the interior with ruched blue silk lid panel over a compartmentalised and lidded tray, with conforming silk lids and fittings, 29.5cm x 21cm x 13.5cm. (2)

£60-100

207

Two Victorian rectangular sewing boxes, comprising; a small walnut example with geometric inlaid bands, mother of pearl escutcheon and lid plaque, the interior with foiled paper covered compartmentalised and lidded tray, 22cm x 15cm x 11.5cm, the other in faded rosewood with oval brass escutcheon and lid plaque, lidded and compartmentalised tray, 27.5cm x 20.5cm x 11.5cm. (2)
£40-80

208

Three Victorian sewing boxes, comprising; a rosewood sarcophagus form example inlaid with cut mother of pearl, interior with tray, 30cm x 24cm x 17cm, a rectangular walnut example with brass line inlay with tray, 27.5cm x 19.5cm x 14cm, and another in rosewood with tray, 27.5cm x 20cm x 12.5cm, all requiring restoration. (3)
£50-100

209

Three Victorian sewing boxes, comprising; a rectangular red leather covered example with handle to lid, silk and velvet lined interior with five mother of pearl tools, 25cm x 19cm x 12.5cm, another in black leather of near oval form, the purple silk interior with tray, generally worn, 25cm wide, and a basket weave rectangular sewing box with red leather lid, containing a selection of haberdashery, 35.5cm wide. (3)
£40-80

210

Three late Victorian leather covered rectangular sewing boxes, comprising; a black leather combination sewing/writing box, buttoned and silk lined interior with three tools, carrying handle to lid, 27cm x 18.5cm x 11cm, another in black with handle to lid, ruched green silk lid panel over a fold-out interior with provision for knitting needles, 27cm x 19cm x 9cm, and another in burgundy leather, carrying handle to lid, interior in matching silk with needlebook, 23cm x 16.5cm x 10cm. (3)
£60-100

211

Five basket weave circular sewing boxes of circular form, comprising; four Chinese examples, the lids embellished with coins, beads and glass rings, largest 23cm, and a Japanese example, the interior in floral painted pink silk with needlebook and pincushion, 22.5cm diameter. (5)
£40-80

212

A 19th century ivory cased sewing set, the ivory case of rounded end rectangular form, monogrammed to the lid "H. R.", the interior with gilded and engraved catch and hinge, the full complement of tools comprising an engraved silver needlecase, thimble with engraved frieze, steel bladed scissors with engraved arms and plain oval loops, bodkin and handled steel stiletto, 10.5cm x 5.5cm.
£250-350

213

A good 19th century tortoiseshell "Lady's Companion" of rectangular section, with hinged sloping lid centred by a white metal tablet, the interior in crimson silk and velvet, with tortoiseshell backed notelet, silk skein holder with three mother of pearl tools, engraved border silver thimble (misshapen), folding blade knife, silver handled button hook and faceted glass tapering scent bottle, 6.8cm x 5.5cm x 10.5cm.
£300-500

213A

A Regency grained red leather sarcophagus form sewing box, the convex sides below a reeded lid panel rising to a gilt tablet, gilt metal floral feet, escutcheon and side ring handles, the interior with pink silk tufted lid lining over a lidded and compartmentalised lower section with six spools, a pair of fitted pincushions, thimble provision, tool card with three steel tools, a pair of needle books, and three leather lids, 25cm x 17cm x 12cm.

* With handwritten note "This Box was given by a Countess of Aylesford to my Aunt ... and to my daughter, Ellen Mary Scollick, July 21st 1914".

*Louisa (Thynne) Countess of Aylesford 1760-1832, wife of Heneage Finch, 4th Earl of Aylesford.

£200-300

Reels, Reel Boxes and Reel Stands

214

A French prisoner of war work straw decorated reel box in the form of a book, the detached lid with a diamond panel of a geometric building, the base with conforming panel, the interior lid with mirror over two pin hinged compartments, the front with two of four bone apertures, 20cm x 11.8cm x 7cm.

£40-60

215

A good 19th century brass reel stand, the circular dish base with a baluster stem supporting three cross form reel tiers below a cast figure of a parrot with glass eyes flanked by pincushions and hinged to form a thimble container, 33cm high.

£80-120

216

A group of nine 19th century and later reels, comprising; a brass and pearl mounted reel with printed label for "Cooper, Leicester", 3.2cm, another slightly variant but without label, a pressed wooden reel "Rawthorn's Golden Flax", 2.7cm, five gilt brass mounted reels, Cooper and Co – 16 Leicester/Pitman's Six Cord – 11- Egyptian Twist/Clarkson's Royal with Royal Coat of Arms/Barber Le'ster with Royal Coat of Arms/Raworth's Royal Thread with Royal Coat of Arms/and another reel formed from two ARP buttons, 3.2cm. (9)
(from the Collection of the late Phyllis Savage)

£100-200

217

A mid-19th century rosewood reel stand, the rectangular base fitted with a drawer below a pair of vase form pincushions, centred by a thimble stand below a turned carrying handle, the frame fitted with three reels on a steel rod with brass terminal, 15.5cm x 7.5cm x 15cm.
(from the Collection of the late Phyllis Savage)

£80-120

218

A J. & P. Coats one mile six cord giant cotton reel, with paper end labels, cellophane wrap, 10.5cm diameter, in Tartan pattern cardboard box.

(from the Collection of the late Phyllis Savage)

£30-50

219

Thirteen bone and mother-of-pearl reels, comprising; five mother of pearl pierced and cut examples, with brass stems, on bone bases, largest 3.2cm, four bone examples with carved tops, three plain bone reels and a cotton barrel, 3cm. (13)

(from the Collection of the late Phyllis Savage)

£50-100



8



22



26



27



28



29



30



31



33



34



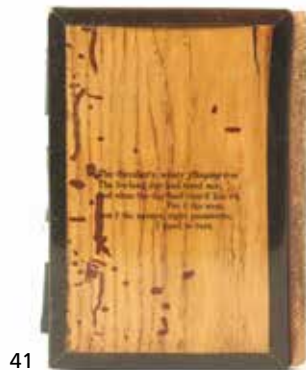
35



36



37



41



42



44



45



46



48



49



52



54



56



57



59



63



64



65



66



68



563

70



76



78



79



80



83



98



99



100





101



102



104



105



106



108



109



111



112



114



115



117



118



124



125



126



127



128



129



130



132



135

136



137

139



142



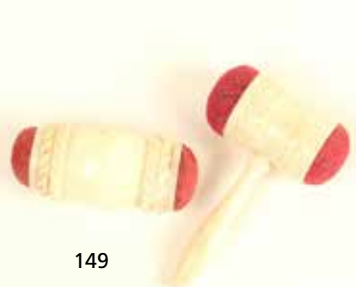
144



146



147



149



151



152



153



155



156



158



163



164



168





169



170



171



172



173



175



176



181



182



183



184



185



186



187



188



189



190



191



193



194



215



202



203



204



212



213



213A



216



217



218



222



223



225



228



229



230



231



232



233



236



237



238



245



246



254



256



260



262



263



264



265



269



272



274



276



277



283



278



280



281



284



285



286



287



288



301



290



291



292



295



299



304



307



309



311



312



313



314



315



322



323



326



327



328



329



330



343



332



344



345



351



353



354



356



357



364



365



366



366



367



367



371



372



373



374



377



379



382



383



384



385



387



389



401



448



458



459



462



462



449



450



454



463



464



465



455



456



466



467



469



388



392



395



427



431



428



468

470



471



477



478



479



480



482



484



499



500



501



502



503



506



507



508



509



510



512



514



515



516



517



518



520



521



525

220

A selection of wooden and other reels, including a Dorcas 40 Thread, 5cm, a carved wooden reel fitted with a magnet, 3cm, and a woven cane box containing reels. (qty)
(from the Collection of the late Phyllis Savage)
£30-50

221

An unusual Dewhurst's Sylko Mile Reel, in original cardboard box with label to lid, the wooden reel in red with complete labels to each end, reel 10cm diameter, box 11cm x 11cm x 10.5cm.
£40-£60

222

A good set of six 19th century ivory cotton barrels, with top wind spindles, 5.5cm high. (6)
£100-200

223

Nine reels and reel holders, comprising; four variant mother of pearl top examples, on brass stems and bone bases, three wooden and bone reels, one s.d., largest 3.7cm high, and two wooden reels with labels. (9)
£40-80

224

Reels & Haberdashery: A boxed set of eight spools of Clark & Co. Paisley, 17cm x 9.5cm, an unopened printed packet of 100 skeins of Barbour's Linen Thread, 18cm, various reels and spools, and a collection of cards of fasteners, safety pins, etc. (qty)
£30-50

225

A Coats cotton reel counter display stand, with four reel slots below a panel inscribed "Coats 100 Yards – Black 36 – White 36 – Black 40 – White 40", glazed front, 46.5cm high, 18cm wide.
£30-50

226

A matched set of four whitewood cotton barrels, all with central spindle winders, approx. 4.5cm high. (4)
£60-100

227

A counter advertising chest of three drawers, the top with reel end for "Dewhurst's – Three Shells – Sylko Machine Twist", two drawers "Dewhurst's Sylko", one drawer re-painted, 32cm x 32cm x 14cm.
£20-30

Silk Winders and Waxers

228

Fifteen various silk winders, comprising; a pair of inward curving rectangular mother-of-pearl examples, 4.5cm, two pairs of bone snowflake examples, another pair, and seven various in bone, largest 4.5cm. (15)
(from the Collection of the late Phyllis Savage)
£50-100

229

Eighteen silk winders, comprising; two mother of pearl examples, largest 6.4cm, five in bone, nine wooden examples, largest 11cm, a large plastic example, and a cardboard "Tour Eiffel" example, 7cm. (18)
(from the Collection of the late Phyllis Savage)
£50-100

230

Eight silk winders and a related box, comprising; five mother of pearl examples in various forms, two with engraved decoration, three wooden examples, two with pierced decoration, and a rosewood turned cylinder box mounted with a mother of pearl silk winder, largest 5.2cm. (9)
£50-100

231

Ten bone silk winders, in various forms, including a pair, largest 6.5cm. (10)
£40-60

232

A matching waxer and pincushion, both of disc form and with silver sides, stylised leaf decoration, 2.5cm diameter. (2)
(from the Collection of the late Phyllis Savage)
£40-80

233

Five waxers, comprising; a silver example with stylised clover leaves, 2.5cm, and four mother of pearl examples, one with pierced overhanging top and bone base, 2.5cm high. (5)
(from the Collection of the late Phyllis Savage)
£50-80

234

No lot

235

No lot

Stilettoes

236

Seven stilettoes comprising; a bone reversible example, s.d. to joint, 9.5cm, a turned example with steel point, 12cm, four bone French prisoner of war work examples, largest 9.3cm, and a steel example with pierced leaf scroll handle, 13.5cm. (7)
(from the Collection of the late Phyllis Savage)
£50-80

237

Twelve stilettoes comprising; a mother of pearl example with pierced handle, 6.5cm, two silver handled examples, one with dents, five small format bone examples, largest 6.5cm, and four others, largest, 9.2cm. (12)
(from the Collection of the late Phyllis Savage)
£50-80

238

A good mother of pearl Palais Royal mounted steel stiletto, the carved handle with circular gilt and enamel pansy motif, gilt ferrule, 11.5cm.
£80-120

239

Four stilettoes and eleven other pieces, comprising; three silver handled examples and another with carved mother of pearl handle, largest 7.5cm, nine ribbon threaders and two small button hooks. (15)
£60-100

240

No lot

241

No lot

Knitting and Crochet

242

Two German Mauchline type knitting needle cases, of cylinder form (Old Tower and Churches, Dundee) and (The Parade, Llandudno, No. 2), 22cm and 22.5cm. (2)
£20-30

243

A 19th century mahogany knitting stick of curved form, with scroll end inlaid with bone diamond motifs and a heart initialled "B.A.", 18cm.
£50-80

244

An unusually large mahogany knitting stick, of exaggerated flattened scrolling form with slot, chip carved terminal, 24cm.
£40-60

245

A 19th century mahogany knitting stick, the oval mount with fan form radial carving centred by an ebony button, the tapering body reeded, 17cm.
£60-100

246

A vegetable ivory crochet or tatting cylinder, of waisted and pierced cylinder form, screw cover, interior with bone mounted chuck form handle, and six radially arranged steel hooks, 8.5cm.
(from the Collection of the late Phyllis Savage)
£40-80

247

A collection of bone crochet hooks, mostly plain cylinder form, together with an example on change card, two boxed sets, and others, largest 29cm. (qty)
£40-60

248

A collection of crochet hooks, including two French prisoner of war work examples and a combination bone bodkin/crochet hook, numerous turned bone examples, and a collection of metal examples of various forms, largest 18cm. (qty)
£40-60

249

An extensive collection of crochet hooks, comprising; bone, metal and other formats, all contained in three neatly made baize rolls. (3)
£40-80

250

Knitting: including three plastic wool ball holders, another in silver plate of folding segmented form, a crude goosewing knitting stick, 26cm, eight white metal bell-shaped needle gauges and two others, two "MP" knitting and crochet calculators, two metal knitting needle cylinders, eight wooden examples and other pieces. (qty)
£30-50

251

Knitting: including seven plastic and Bakelite rectangular needle boxes incorporating gauges, 31.5cm, five plastic wool ball holders, a pair of wooden winding clamps, a winder, six metal bell gauges and two others, three "MP" calculators, three wooden cylinder needlecases and a selection of needles, mostly in original packaging. (qty)
£40-60

252

No lot

253

No lot

Tatting Shuttles

254

A fine 19th century ivory, shibayama and lacquer Japanese tatting shuttle, one side decorated with a bird in water amid water plants, with hardstone highlights, the other with leafy branches, a bird, a mother of pearl butterfly and a red stained ivory beetle, 7.8cm.
(from the Collection of the late Phyllis Savage)
£300-500

See illustration on front cover.

255

Nineteen tatting shuttles, comprising; thirteen in bone, one red stained, a mother of pearl example and five others, largest 10cm. (19)
£50-100

256

A pair of horn, abalone, pearl and wire inlaid tatting shuttles, with variant floral patterns, bone dividers, one slight nick to inner edge and one point rounded, 7.3cm, with old label attached. (2)
£80-120

257

No lot

258

No lot

Sewing Clamps

259

A pair of stained wood winding clamps, the book form frames below tapering reels surmounted by ball cups, 20.5cm. (2)
£10-20

260

A silver plated hemming bird clamp, the decorated rectangular frame with initialled screw terminal "M. W.", below a bowl form pincushion, the hemming bird with a branch in its mouth and a reel holder to its back, 18cm.
£50-80

261

A pair of wooden winding clamps, book form frames below open reels with cup tops, 19cm. (2)
£10-20

262

An unusual sewing clamp, the rectangular steel frame mounted with a brass cased pincushion below a brass bird, the bird marked to the underside of tail feathers "A Gerould and Co., Patent", 13cm.
£50-80

263

A brass hemming bird clamp, the rectangular frame with leaf and floral decoration below a pincushion and sprung bird with further pincushion, marked to wings "Patent 1853", 12.5cm
(from the Collection of the late Phyllis Savage)
£40-60

264

A good pair of rosewood winding clamps, the ring turned rectangular frames with roundel turned screws below tapering reel tops, 14cm. (2)
£80-120

265

Two sewing clamps, comprising; a brass rectangular frame example with pincushion top, 9.5cm, and another with steel wirework frame below a sprung clip and pincushion top, stamped "DRGM 26359", 8cm. (2)

£40-80

266

Two Chinese bone sewing clamps and two other pieces, comprising; a pincushion clamp, 6.5cm, another with reel top, 10.5cm, a cylinder bodkin case, 14.5cm, and a puzzle rod. (4)

£40-80

267

No lot

268

No lot

Needle Cases and Related Containers

269

An unusual barrel form "Piccadilly Combination Sewing Needle Case", transfer decorated with trade mark, contents list, etc., the interior with double reel, needlecase and thimble, of German manufacture, 7.5cm.

£20-30

270

Two falling side cardboard needlepacket boxes, one in mint condition, with original outer box decorated with female film star style prints below a silk scrap top, various needlepackets for "W. Woodfield and Sons", central thimble box with thimble, 8cm x 12cm, the other with landscape prints and with Abel Morrall's and other needlepackets. (2)

£30-50

271

A group of seven needlebooks, comprising; an example with cut and stacked paper covers, green silk lining and tie, minor losses, 11cm x 6.5cm, another with punched card covers, a Bristol card example worked in steel beads "Go On To Perfection", a shell work example incorporating a colour print "Second Terrace, Crystal Palace" and to the other side a gilt and blue velvet panel "A Present From The Crystal Palace", a velvet needlebook with silver wire and other decoration, a beaded and stitched Bristol card example, and another made from the pass ticket for "The International Health Exhibition, London, 1884" made out to "Messrs. Mordan & Co.". (7)

£40-80

272

Two scrapwork needlepacket boxes, one of book form, in blue velvet with floral scraps, the interior with racing scrap and concertina needlepacket card, 6.8cm x 6cm, and another "The Victoria Needlecase", pincushion lid and twin concertina cards with prints of young children, worn, 7cm x 5cm. (2)

£30-50

273

Three needlecases, comprising; a continental silver example in the form of an elaborate key, the two parts linked by a chain, slightly misshapen at joint, 9cm, a bone furled umbrella form example, 10.5cm, and a turned and carved wooden example with spiral and square decoration, 9cm. (3)

£30-50

274

Two needlebooks and needle packets, comprising; a mother of pearl needlebook engraved with flowers and leaf scrolls, crack to one side, 5.4cm x 3.5cm, a gilt tooled leather wallet form example inscribed "Needles", with numerical interior, 7.3cm x 5.5cm, and eight needle packets. (10)

£30-50

275

Needlepacket cases, comprising; a cardboard Synoptical Needle Case for C. Laight & Co, Redditch, with original needle packets, with the outer slip case printed with flowers and "Wishing You A Happy New Year", 9.5cm x 6.5cm, a Holbrook & Co Worcestershire Sauce needle bottle, an Elir Coronation needle book, 14.5cm, and a Flora McDonald needle packet. (4)

£20-40

276

Three bone furled umbrella needlecases, comprising; an example with hoof form terminal with Stanhope (Crystal Palace), 12cm, another, the turned terminal with Stanhope (Souvenir of Blackpool, six views), 12.8cm, and another with faded purple stained lower section, the first form terminal with Stanhope (Crystal Palace), 11.5cm. (3)

(from the Collection of the late Phyllis Savage)

£60-100

277

An unusual carved ivory peapod needlecase, one side with two Chinese engraved characters, small scratch or crack by first character, 9cm.

(from the Collection of the late Phyllis Savage)

£50-100

278

A brass Avery needle packet case "Postal Weight" (1876), ring handle to hinged cover with falling sides centred by a pincushion, marked to base "W. Avery And Son, Redditch," with registration mark and stamped number "No. 614", 6.5cm high.

(from the Collection of the late Phyllis Savage)

£100-200

279

A gilt brass Avery needle packet case, "Butterfly" (1871) hinged wings, stamped to underside "Patent W. Avery and Son, Redditch", registration mark, 12cm wide.

(from the Collection of the late Phyllis Savage)

£100-200

See illustration on front cover.

280

A good tortoiseshell needle packet box, sloping lid with white metal tablet, interior edged in bone with bone divisions and stamped "Lund, Cornhill", 5.4cm high.

(from the Collection of the late Phyllis Savage)

£50-100

281

Two beadwork covered cylinder needlecases, both with bone cores, one in blue, red and white beads, in a spiral and geometric pattern, 10cm, the other in white and blue beads in a geometric design, 9cm.

(2)

(from the Collection of the late Phyllis Savage)

£50-100

282

No lot

283

A standing needlecase/thimble, probably German, early 18th century, silver screw rim thimble with trellis and punched design, over a tapering cylinder needlecase with panels of engraved decoration, on a seal form base, possibly originally with a reel, 8cm high.

(from the Collection of the late Phyllis Savage)

£150-250

284

A gilt metal Avery needle packet case, "Horseshoe" (1876), hinged internal mount, stamped "W. Avery & Sons, Redditch", with registration mark, 6cm.

(from the Collection of the late Phyllis Savage)

£50-100

285

A gilt metal Avery needle packet case, "Horseshoe" (1876), hinged internal mount, stamped "W. Avery & Sons, Redditch", interior in blackened finish, with registration mark, 6cm.

(from the Collection of the late Phyllis Savage)

£50-100

286

A mother-of-pearl needlepacket case of rectangular form, white metal stop hinge, 4.5cm high.

(from the Collection of the late Phyllis Savage)

£40-80

287

A tortoiseshell needlepacket case, slant top with white metal tablet, tapering sides, bone internal edging, silk lined interior, 4.7cm high.

(from the Collection of the late Phyllis Savage)

£50-100

288

Two fish form needlecases, comprising; a bone example with carved decoration, the screw top incorporating a Stanhope (Nantes – 6 views), 9.5cm, and a turned wooden example, probably olive wood, 13cm. (2)

(from the Collection of the late Phyllis Savage)

£40-80

289

Three bone and ivory needlecases in the form of furred umbrellas, all incorporating Stanhopes (Lady Godiva/Blackpool Tower and Wheel/Blackpool Tower), largest 11.6cm. (3)

(from the Collection of the late Phyllis Savage)

£50-100

290

Four needlecases, comprising; a Palais Royal example of tapering form with gilt ferrule, 7.6cm, a rectangular ivory example with rounded ends, inscribed "Jassey" (?), 7.8cm, a bone example in the form of a furred umbrella with Stanhope (Good Luck from Blackpool – five views), 10.5cm, and a French silver gilt example engraved with leaf scrolls, 6.8cm. (4)

(from the Collection of the late Phyllis Savage)

£60-120

291

Four Tyrolean carved wooden needlecases, comprising; two standing examples, one terminating in a squirrel eating, ears a little chipped, 10cm, and two tapering cylinder form examples with floral and leaf carved decoration, largest 13cm. (2)

(from the Collection of the late Phyllis Savage)

£40-60

292

Two needlecases and a needlebook, comprising; a glass cylinder needlecase painted with flowers and inscribed "Forget Me Not", chip to lower section, crack to top section, 5cm, a bone furred umbrella example with Stanhope (Souvenir of Brighton – six views), 11cm, and a Holbrook & Co. Worcestershire Sauce cardboard needlebook, 9cm. (3)

(from the Collection of the late Phyllis Savage)

£40-80

293

Seven needlecases, comprising; a carved Tyrolean example, 13cm, a Cantonese dragon carved example, 9.5cm, a plastic furred umbrella, 9cm, another in wood, lacking handle, 8cm, a vegetable ivory turned example, 7.2cm, a tin Mitrailleur example, 'The Lighthouse Needle Case', 5.8cm, and another needlecase, 5.5cm. (7)

(from the Collection of the late Phyllis Savage)

£50-100

294

Four needlecases and four examples of natural vegetable ivory, comprising; a turned vegetable ivory example inscribed "Emily 1856", 8.5cm, another with acorn ends, 8cm, a small turned wooden example, 6.2cm, a white metal needlecase with hinged cover, 4cm, and four samples of vegetable ivory, unworked. (8)

(from the Collection of the late Phyllis Savage)

£50-100

295

Four needlecases all of furred umbrella form, comprising; a bone example, part red stained, with carved dog head handle, 11.5cm, another in bone, slight hole towards terminal, 11.7cm, a wooden bone mounted example, 9.5cm, and a similar carved bone example, 9cm. (4)

(from the Collection of the late Phyllis Savage)

£60-100

296

Eight cylinder form needlecases, comprising; a Tyrolean example, 10cm, a bone stacked brick example, a.f. to joint, 11cm, a bone pierced and drilled example, inoperative Stanhope, 10cm, two acorn ended bone examples, and three others. (8)

(from the Collection of the late Phyllis Savage)

£40-80

297

Nine needle containers, comprising; a wooden barrel, a standing example in amber, a tin Mitraillies-Serpent Brand, a modern beadwork covered example, a plastic standing example "The Magic Pin Box", a plastic example as a native servant and three others, largest 9.5cm. (9)

(from the Collection of the late Phyllis Savage)

£40-80

298

A needlecase/tape measure and two prints, the needlecase in turned bone below a vegetable ivory tape measure, complete printed tape, the spindle with Stanhope (Souvenir of Bournemouth – 16 views), 11cm, a cardboard needlebox with print of a girl gathering flowers, 4.5cm, and a needlebox print, framed, 12cm x 9.5cm. (3)

(from the Collection of the late Phyllis Savage)

£40-60

299

Three needlecases, all in the form of furred umbrellas, comprising; a wooden example with carved fist handle, with Stanhope (International Exhibition, Edinburgh 1890), 14cm, another in bone with Stanhope (very faint but possibly Blackpool Tower), 12.5cm, and another part dark stained with Stanhope (Souvenir of Weymouth – 6 views), some slight distortions to edges, 10.7cm. (3)

(from the Collection of the late Phyllis Savage)

£50-100

300

Seven bone and ivory needlecases, comprising; four carved Cantonese examples of tapering form, largest 8cm, a turned ivory example with screw top, s.d. to upper mount, 10.5cm, and two plain cylinder examples. (7)

(from the Collection of the late Phyllis Savage)

£50-100

301

A brass nanny brooch with scroll mount to spangle, screw thread and needle container, stamped "DRGM 368036", 5cm.

(from the Collection of the late Phyllis Savage)

£20-40

302

A collection of needle packets, comprising; four large format examples, The Army & Navy Needle Book, 12cm x 7cm, a horseshoe form example, 12cm, Edinburgh Castle, 13.5cm, The Clan Needle Book, and numerous small format examples. (qty)

(from the Collection of the late Phyllis Savage)

£30-50

303

Five needlebooks, comprising; a Bristol card example, inscribed "Needles" in cross-stitch, 6cm x 6.5cm, a heart shaped velvet example applied with beads, 7cm, a painted pink silk shell form example, 7cm, another in straw work, and a leaf pierced bone example, 5cm. (5)

(from the Collection of the late Phyllis Savage)

£40-60

304

A good mother of pearl needle packet box, of rectangular form with slanting top, the front inlaid with white metal leaf scrolls, 5.3cm high.

£80-120

305

Four scrap work decorated pin and needle books, comprising; a circular yellow cloth example with colour bust print of a young girl, beaded border, 8.5cm, another in pink silk with scraps of a bird and child, steel beaded border, 9cm x 7cm, another with floral scrap with gilt brass clasp and border, the interior advertising "Jas. Smith & Son's Genuine Needles ..., stuck and secured to patent wrapper", 6cm x 5.5cm, and a synoptical style needle packet holder applied with scraps and gilt foil border, 7cm x 5.3cm. (4)

£60-100

306

Two needlebooks and a pin card, comprising; a floral decorated cardboard needlebook in blue and gilt, blue silk spine and tie, internal flannels, 6.2cm x 4.5cm, another in woven silk featuring feathers and leafy branches, 10.5cm x 6.2cm, and a five of diamonds silk and velvet pin card with pin stuck edges, 9.5cm x 6.5cm. (3)

£60-100

307

Two paper and card needlebooks, comprising; a Kirby, Beard & Co. synoptical example, the outer sleeve bound in gilt brass, to one side a colour print of a young girl at the seaside, the other a boy dressed as a soldier with captured Zulu child, 10cm x 6.6cm, the other of book form, the cover with two children on a balcony, a jester type doll and a dog to the reverse, with a courting couple, paper and silk interior good, 9.5cm x 6.7cm. (2)

£40-80

308

Three needlebooks, comprising; a card example, the cover with rural winter scene "A Happy New Year", the reverse a basket of holly and robin "A Merry Christmas", 9.7cm x 7cm, another card example with beadwork and velvet cover, 9cm x 7cm, and a material example, 6cm x 4.2cm. (3)

£40-60

309

Two needlebooks, comprising; an ivory example, the cover inscribed in steel pins 'Souvenir', leather spine a little worn, blue watered silk interior, 8.5cm x 6cm, and a bone example, painted to one side 'Mary Ann' within flowers and scrolls and with flowers to reverse, internal flannels, red silk spine and ties, 4.5cm x 3.2cm. (2)

£50-100

310

Three mother of pearl needlebooks, comprising; a purple silk lined example, the cover engraved with a floral spray of tulips, 6.5cm x 4.5cm, another, the cover and back in mother of pearl with star and foliate branches, blue silk spine worn, stitched edge flannels, 4.4cm x 3.4cm, and another with pierced mother of pearl cover, spine and tie replaced, recent card back panels, 4.6cm x 3cm. (3)

£50-100

311

Two needle packet boxes, comprising; a red morocco gilt tooled rectangular example, the interior with blue paper covered box flanked by a flannel, 6.2cm, and another with drawer form compartment with geometric woven cover, 6.2cm. (2)

£40-80

312

A rare set of ten needlepacket boxes in original outer box, the latter with an oval colour print of a river landscape in gilt oval with scroll spandrels, the ten smaller boxes each with a raised figure within gilt or floral border, 4.5cm x 2.8cm, the outer box 15cm x 9.7cm.

£100-200

313

An unusual continental figural carved wood needlecase of cylinder form, the upper section carved as a woman in white spotted red dress, 18th/19th century, 12.5cm.

£40-80

314

A 19th century continental silver needlecase, in the form of an elaborate key with leaf decorated bow and reeded decorated shaft, on a hanging chain, 10.5cm.

£50-100

315

Five needlecases, comprising; a rare vegetable ivory cylinder example of standing cylinder form, inscribed in red script "A Present From The Thames Tunnel", 8cm, a steel and gilt cylinder needlecase "W. Bartfleet and Sons/Patentees/Redditch", one end with six numerals, pointer and aperture, 6.2cm, a carved Tyrolean needlecase, 12.2cm, and two cardboard examples, "Victoria Cylinder Needle Preserver/C. L. Turney", 5.8cm. (5)

£50-100

316

A collection of needlebooks, including cardboard and leather examples for Abel Morralls, Kirby Beard and Co., Ltd., Halls, Morris and Yeomans Ltd., and others, together with a perspex cased needle display for Milward, 5cm high. (10)

£30-50

317

Seven needle, pin and other books, comprising; a paper printed "Patent Pin book G. L. Turney Patentee Regina Mixed - By Her Majesty's Royal Letter Patent ...", 5cm, a leather cased Sharps needle book, 10cm, another in velvet and stacked paper, s.d., 7.5cm, another as a Union Jack on pole, 21cm, a beadwork circular example, 5.5cm diameter, an embroidered circular card "From Her Beloved Friend S.S.", 6.5cm diameter, and a Bristol card postage stamp case, 6cm x 6.5cm. (7)

£40-80

318

A collection of paper needle packets, 19th century and later, approximately 130 including three larger format examples circa 1950. (qty)

£50-100

319

A red grained morocco purse form sewing companion, by Mappin Brothers, fitted pincushion, needle packets, folding skein holder and needle flannel, 10cm x 6.5cm.

£40-80

320

No lot

Scissors

321

A useful selection of scissors for sewing boxes, comprising; five pairs of stork scissors, a pair with silver handles, 9.5cm, a shear pair with sliding floral painted case, 8cm, and five decorative pairs, including one for H.M. Queen Elizabeth II's Coronation. (12)

£30-50

322

A rare pair of steel scissors, the blades inscribed :Souvenir of Ohligs" and within the floral decorated arms featuring a brass bust of Kaiser Wilhelm, 16cm.

£40-80

323

A rare pair of steel scissors, the gadrooned scroll arms featuring portraits of Edward VII and Queen Alexandra, 15.2cm.

£40-80

324

Four pairs of scissors, comprising; three 19th century steel pairs and a pair to commemorate the Coronation of 1953, largest 9.8cm. (4)

£40-80

325

Eight pairs of scissors, including a pair with beaded pointed oval loops by "J. Rodgers, Sheffield", 14cm. (8)

£40-60

326

Five pairs of steel scissors, comprising; a pair with floral and bird pierced arms to pierced border ovals, 13cm, another pair, the arms in the form of a hare, 9.5cm, another pair, the arms pierced and engraved as a swan, 6.7cm, a stork form pair, 8cm, and another miniature stork form pair, 4cm. (5)

(from the Collection of the late Phyllis Savage)

£100-200

327

A pair of silver handled scissors and a stiletto, by Joseph Taylor, Birmingham, the scissors with oak leaf and acorn arms to floral garland loops, complete with matching sheath, 9.2cm, the steel stiletto slightly bent, 8cm. (2)

(from the Collection of the late Phyllis Savage)

£50-80

328

A cased pair of silver handled scissors and a thimble, matched, the scissors with floral and scroll embossed arms and loops, Birmingham, 1901, by L. & S., 9.5cm, the thimble later, in leatherette case.

(from the Collection of the late Phyllis Savage)

£40-60

329

Three pairs of larger format steel scissors, comprising; a clock tower pair, 16cm, a stork form pair, 16.5cm, and a portrait medallion pair, 15cm. (3)

(from the Collection of the late Phyllis Savage)

£40-80

330

Five pairs of scissors, comprising; an Indian bone pair, the arms carved as birds below pointed loops, 12cm, and four steel stork form pairs, largest 17cm, smallest 9.2cm. (5)

(from the Collection of the late Phyllis Savage)

£40-60

331

Four pairs of silver handled scissors and three scissor sheaths, the scissors Birmingham 1902, 10.5cm, a matching pair, two others, two silver scissor sheaths and a pierced gilt brass scissor sheath on hanging chain. (7)

(from the Collection of the late Phyllis Savage)

£50-100

332

Seven pairs of steel and plated scissors, including a pair with serpent arms, 14cm, and a stork form pair, 8.5cm. (7)

(from the Collection of the late Phyllis Savage)

£30-60

333

Eleven pairs of scissors, comprising; a larger steel pair with floral arms and loops, 20cm, a button holing pair, stamped "FM", 11cm, a folding pair with brass frame, and eight other pairs, steel, plated and gilded. (11)

(from the Collection of the late Phyllis Savage)

£30-50

334

Ten pairs of steel scissors, suitable for sewing boxes, including a lace maker's pair, and other useful examples, largest 10cm. (10)

£50-100

335

Fourteen pairs of steel scissors, suitable for sewing boxes, including button holing examples, largest 12.5cm. (14)

£40-80

336

Fourteen pairs of steel scissors, suitable for sewing boxes, including four button holing pairs and a file decorated pair by Brookes and Crookes, 14cm. (14)

£40-80

337

Twenty six pairs of steel scissors, including four button holing examples, a pair of shears, and a novice pair, largest 14.5cm. (26)

£40-80

338

Twenty pairs of steel scissors, some with decorative details, largest 25cm. (20)

£30-50

339

Cased sets of scissors, comprising; six sets in triangular tapering cases, mostly incomplete, the largest 19.5cm, and a rectangular case containing two of three pairs of scissors by J. Rodgers, case 21.5cm x 13cm. (7)

£30-50

340

Folding scissors and other items, comprising; two pairs of folding scissors with bone scales, a pair in oval section case with folding loops, three pairs with hinged loops, a cylinder form multi-tool with folding scissors, five various folding knives, one with silver blade, a.f., six steel folding button hooks, and five others, largest 14cm. (23)
£50-100

341

No lot

342

No lot

Thimble Stands and Cases

343

Four carved Irish bog oak thimble stands, including one with bog oak thimble, comprising; a bun form example carved with harp, dog, shamrock, etc., complete with carved bog oak thimble, inscribed "ERIN", stand 5cm diameter, an owl form example with glass eyes with a silver thimble, 6cm, a saucepan with silver thimble, 6cm, and a cauldron form example, 3.5cm. (4)
(from the Collection of the late Phyllis Savage)
£50-100

344

A thimble case and a thimble stand, the case in mother of pearl and abalone shell parquetry, canted lid, velvet lined, 4cm, the stand in the form of a three masted boat with shell sails and hull, inscribed "A Present From Folkestone", 13cm. (2)
(from the Collection of the late Phyllis Savage)
£40-80

345

Two turned wooden acorn form thimble cases, comprising; an early 19th century yew wood example with green stained cup and containing a 19th century turned and line painted wooden thimble, 2.5cm, 5cm, the other with carved cup and stalk, blue velvet thimble mount, 4.8cm. (2)
(from the Collection of the late Phyllis Savage)
£50-100

346

Six thimble cases, comprising; a brass floral decorated egg form example on chain, inscribed "Londre 1908", 4.8cm, a plain brass egg with reel and brass thimble, two leather examples of trunk form, a metal 'walnut', and a vegetable ivory acorn form example with reel, needle case and aluminium thimble, 6cm, two with silver thimbles. (6)
(from the Collection of the late Phyllis Savage)
£50-100

347

Five thimble cases, comprising; a large olive wood egg form example with reel and needle cylinder, 7cm, a vegetable ivory acorn form example with reel and needle cylinder, 6cm, a mother of pearl egg form example with quilted interior, 5cm, a coquilla nut egg and a carved wooden example as a walnut, the stalk with Stanhope (St. A. Pollinarious Kirche Zu Remagen), 5cm. (5)
(from the Collection of the late Phyllis Savage)
£50-100

348

Four thimble cases, comprising; two vegetable ivory acorns, largest 6cm, another as an egg with internal needle cylinder and carved vegetable ivory thimble, 6.2cm, and a wooden standing example as an acorn with brass thimble, 6.4cm. (4)
(from the Collection of the late Phyllis Savage)
£50-100

349

Five thimble cases, comprising; two hinged white metal box form examples, both stamped, both 2.5cm, a brass thimble egg on chain with floral decoration, quilted interior, with a brass thimble, 4cm, a plated bucket form example, and a leather 'trunk' form example stamped 'Souvenir', 3.5cm. (5)
(from the Collection of the late Phyllis Savage)
£50-100

350

A collection of thimble cases and stands, including a Dorcas plastic thimble stand, 12cm wide, a carved wooden standing bear, 7cm, and others in various materials. (qty)
(from the Collection of the late Phyllis Savage)
£50-100

351

Three thimble cases, comprising; a turned ivory acorn form example fitted with reel and needle cylinder, another in turned hardwood, and an Indian white metal egg form example, decorated with flowers and leaves, internal needle cylinder. (3)
(from the Collection of the late Phyllis Savage)
£50-100

352

Four thimble cases, comprising; two vegetable ivory acorn form examples, one with vegetable ivory thimble, each 4.5cm, a brass acorn with cloth cap with a brass reel, and an 'egg cup and egg' in natural and stained vegetable ivory, lacking two ivorine bands of four, 6.8cm. (4)
(from the Collection of the late Phyllis Savage)
£50-100

353

A good vegetable ivory thimble case and thimble, the case of acorn form with carved and turned decoration, the thimble with carved frieze, case 6cm.
(from the Collection of the late Phyllis Savage)
£40-80

354

Five thimble stands and holders, all of slipper or shoe form, comprising; three glass examples, one monogrammed "TSL", a purple velvet shoe form example and another in velvet and silk as a slipper with pin stuck decoration, paper label "Model of A Turkish Slipper", 7.5cm. (5)
(from the Collection of the late Phyllis Savage)
£40-80

355

Five thimble cases, comprising; a brass floral decorated egg form example with silver thimble, 4.5cm, another in mother of pearl, a cardboard walnut, a leather trunk, and an acorn form example in stained plastic. (5)
(from the Collection of the late Phyllis Savage)
£40-80

356

A tortoiseshell thimble case of octagonal form, with slightly domed hinged cover, internal bone edge, red velvet lined interior, 31cm high.
£40-80

357

A fine ivory and gold pique thimble box, circa 1780, the curved lid over an angled front and back, with borders of gold pique, gold ring side handles and vacant lid cartouche, purple velvet lined interior, two minor age cracks to ends, 3.5cm wide.
£150-250

358

No lot

Thimbles

359

An 18th or early 19th century tall silver thimble, the plain deep frieze initialled and dated "J.B. 1811", holes, 2.6cm.

£30-50

360

Fifteen black mark Royal Worcester thimbles, twelve painted with fruit or flowers, three of birds, all signed. (15)

£30-50

361

A puce mark Royal Worcester thimble, of a bird on a branch, signed, indistinct but possibly Powell.

£40-80

362

Six thimbles, comprising; an old tortoiseshell example with skillful repair, a 19th century horn example, slight split, and four bone and ivory examples. (6)

£30-50

363

Eight early bronze and steel thimbles, 15th and 16th century, including; Hispano Moresque examples, onion shapes, etc. (8) (Diane Pelham Burn Collection)

£50-100

364

An unusual 19th century porcelain finger form thimble, in white glazed porcelain, possibly Meissen, minor chip to lower rim.

* Sotheby's Geneva, November 1987

£50-100

365

A rare silver thimble, circa 1830, inscribed to the frieze "Brighton Gift", with floral panel between fancy lines over a faceted rim.

(from the Collection of the late Phyllis Savage)

£50-100

366

An English silver and enamel thimble, by Peter Swingler, depicting an oval portrait of Sir Edward Elgar and an oval panel of Worcester Cathedral, the latter signed, the panels within a raised ground, hallmarked to rim interior.

(from the Collection of the late Phyllis Savage)

£60-100

367

An English silver and enamel thimble by Peter Swingler, depicting "Washington Crossing The Delaware 1776", signed, hallmarked within the apex and stamped "Made in England".

(from the Collection of the late Phyllis Savage)

£60-100

368

Eleven English silver and transfer enamel thimbles, by James Swann and Son, various subjects. (11)

(from the Collection of the late Phyllis Savage)

£40-80

369

Seven English silver and transfer enamel commemoratives, by James Swann and Son, four for Queen Elizabeth II, The Queen Mother's 80th Birthday 1985, Sarah/Andrew and Charles/Diana. (7)

(from the Collection of the late Phyllis Savage)

£40-80

370

A Victorian gold thimble of heavy gauge, the beaded border plain frieze set with six diamonds in raised square settings, engraved internally "Christmas 1887".

(from the Collection of the late Phyllis Savage)

£150-250

371

An English silver and blue enamel thimble commemorating Princess Diana, 1961-1997, by A.G.

(from the Collection of the late Phyllis Savage)

£30-50

372

A gold thimble in the Danish/Norwegian style, moonstone top, engraved "Olleaf Herman", marked internally within the rim "18k?/6/ BH".

(from the Collection of the late Phyllis Savage)

£100-200

373

A gold thimble of good gauge, late 19th/early 20th century, the frieze with stylized anthemion over a border or raised dots and 'brickwork' rim.

(from the Collection of the late Phyllis Savage)

£100-200

374

An English gilt metal thimble, the broad frieze with leaf scroll engraving, divided by a cartouche engraved "Phebe".

(from the Collection of the late Phyllis Savage)

£30-50

375

Three American gold thimbles, comprising; a diamond border example, another with rural buildings and another with scrolling rim, engraved to frieze "Louise". (3)

(from the Collection of the late Phyllis Savage)

£100-200

376

Two gold thimbles, both 9ct, one by Henry Griffiths and Sons, the other by Charles Horner. (2)

(from the Collection of the late Phyllis Savage)

£70-100

377

A gold thimble of good gauge, the frosted frieze with a raised two colour border of fruiting vines.

(from the Collection of the late Phyllis Savage)

£100-200

378

Two American gold thimbles, one initialled "BBW", within a leaf engraved frieze and raised leaf scroll border, and another with leaf and banner frieze divided by a vacant cartouche. (2)

(from the Collection of the late Phyllis Savage)

£100-200

379

A gold thimble, probably English, late 19th/early 20th century, the frosted frieze with raised leaf scroll decoration divided by a vacant shield cartouche.

(from the Collection of the late Phyllis Savage)

£100-200

380

Three American gold thimbles, one with Grecian key frieze, initialled "AWS", another with plain and engraved alternate panels, and another with plain frieze, initialled "HER". (3)

(from the Collection of the late Phyllis Savage)

£150-250

381

Three American gold thimbles, with alternate engraved and plain panels, two initialled. (3)
(from the Collection of the late Phyllis Savage)
£150-250

382

A late 19th century French gold thimble with two-tone leaf frieze, divided by a monogrammed shield cartouche "MB".
(from the Collection of the late Phyllis Savage)
£150-250

383

A late 19th century gold thimble, the wire 'rope' frieze divided by a band of raised pearls.
(from the Collection of the late Phyllis Savage)
£100-200

384

An early 20th century gold thimble, with inset stone top, initialled "K" above a band of blue enamel waves, stamped to the interior of apex "Crown/Sand M B/585".
(from the Collection of the late Phyllis Savage)
£60-100

385

A rare 19th century English pictorial silver thimble, depicting a bridge with a buoy or tower with two figures in a rowing boat, a three masted sailing ship nearby.
(from the Collection of the late Phyllis Savage)
£200-400

386

Two thimbles, 19th century, comprising; a mother of pearl example with plain frieze and copper gilt rim, and a similar bone example. (2)
(from the Collection of the late Phyllis Savage)
£60-100

387

An early 19th century English silver filigree thimble, the quill work border with an oval cartouche, engraved with a fist holding a crescent above initials.
(from the Collection of the late Phyllis Savage)
£80-120

388

Three 19th century English silver pictorial thimbles, comprising Windsor Castle (x2) and Brighton Chain Pier, all with damage. (3)
(from the Collection of the late Phyllis Savage)
£40-80

389

Three English porcelain thimbles, comprising; a 19th century example painted with a bird within flowering branches, within gilt bands, a puce mark Royal Worcester thimble painted with a kingfisher, between gilt lines, surface very grainy, and a 19th century example painted with flowers, cracked. (3)
(from the Collection of the late Phyllis Savage)
£60-100

390

A silver finger cover to the lower finger joint, 5cm.
(from the Collection of the late Phyllis Savage)
£30-50

391

Five enamel decorated silver thimbles, by James Swann & Son, comprising; three floral, a butterfly and a "Willow Pattern" example, in a fitted case, 10cm x 8.5cm.
(from the Collection of the late Phyllis Savage)
£40-60

392

Five enamel decorated thimbles, comprising; a blue floral example with hardstone top, stamped to the rim "935 HG", another in blue/green enamel with moonstone top, internal apex mark "935", another with enamel band inscribed "Bad Schwalbach" below moonstone top, stamped "800" and two silver gilt examples with enamel borders, one with coloured top, one s.d. to lower enamel stripe. (5)
(from the Collection of the late Phyllis Savage)
£80-120

393

Thimbles and related items, comprising; an English silver thimble with purple enamel band, a gilded cloisonné enamel thimble stamped "925", a pink ground thimble/needlecase, and two enamel cylinder boxes, one in blue, containing a thimble ring, the other in yellow enamel with miniature thimble, the case stamped "Germany". (5)
(from the Collection of the late Phyllis Savage)
£50-100

394

Ten enamel decorated thimbles, including an example with floral border, stamped "925", another to commemorate the Birth of Prince Henry, and nine others, two a.f. (10)
(from the Collection of the late Phyllis Savage)
£40-80

395

Seven English stone top silver thimbles, including examples by James Swann & Son (x4), two with damage to tops. (7)
(from the Collection of the late Phyllis Savage)
£40-80

396

Twelve white metal foreign thimbles, including an example with filigree border, a champlevé enamel example, a cloisonné example, Mexican and others. (12)
(from the Collection of the late Phyllis Savage)
£40-80

397

Seven silver and white metal thimbles, comprising; an example stamped "800" with 'turquoise' jewelled frieze, another similar with 'opal' border, another a.f., two stone top thimbles, a white metal thimble with star border and an English silver finger ring. (7)
(from the Collection of the late Phyllis Savage)
£50-100

398

Seven white metal continental thimbles, comprising; three with hardstone tops, two with 'jewelled' borders, and two others. (7)
(from the Collection of the late Phyllis Savage)
£50-100

399

Seven silver and white metal thimbles, comprising; a Cable style example, a Charles Horner example, a James Swann and Son millennium thimble, and four modern thimbles, one of mask form. (7)
(from the Collection of the late Phyllis Savage)
£50-100

400

Five thimbles, comprising; a 19th century heavy leaf scroll and floral decorated thimble, with marker's mark "LS", a later example in box, a Marsh Arab thimble, and two continental examples. (5)
(from the Collection of the late Phyllis Savage)
£40-60

401
An unusual large silver thimble, by Charles Horner, probably a sample, wriggle engraved border, over a faceted rim, 2.5cm high, 2.5cm diameter.
(from the Collection of the late Phyllis Savage)
£40-60

402
Ten silver thimbles, mostly American or continental, all with decorative borders. (10)
(from the Collection of the late Phyllis Savage)
£50-100

403
Fourteen thimbles and a pincushion relating to The Dorset Thimble Society, comprising; thimbles in enamel 1997, 1999 (x2), one boxed and 2001 together with a pincushion dated 2000, in ceramic 1985, 1989, 1991, 1993 (x2), 1985 -2000, and four in silver, 1985, 2009, 1985-1995, and 2011, last boxed. (15)
(from the Collection of the late Phyllis Savage)
£40-80

404
Three inscribed thimbles, comprising; a brass example "God Help Us", another "For a Friend", and a nickel example "Exposition Paris 1937". (3)
(from the Collection of the late Phyllis Savage)
£30-50

405
Ten English silver thimbles, most with decorative borders, one with Rd. No. 210800. (10)
(from the Collection of the late Phyllis Savage)
£50-100

406
Ten English silver thimbles, most with decorative borders. (10)
(from the Collection of the late Phyllis Savage)
£50-100

407
Sixteen modern English silver thimbles. (16)
(from the Collection of the late Phyllis Savage)
£60-100

408
Ten English silver thimbles, including one with Rd. 73628. (10)
(from the Collection of the late Phyllis Savage)
£50-100

409
Ten English silver thimbles, most with decorative borders. (10)
(from the Collection of the late Phyllis Savage)
£50-100

410
Seventeen mainly English silver thimbles, including two Royal Spa, two with thistle borders, and other attractive examples, one with top restored. (17)
(from the Collection of the late Phyllis Savage)
£80-150

411
Ten English silver thimbles. (10)
(from the Collection of the late Phyllis Savage)
£40-80

412
Four thimbles, comprising; a horn example with pearl top, and three early 19th century silver thimbles, all initialled and with engraved friezes, one with steel top. (4)
(from the Collection of the late Phyllis Savage)
£50-100

413
Twenty four thimbles, most hallmarked, all with holes or damage. (24)
(from the Collection of the late Phyllis Savage)
£40-60

414
Five thimbles in cases, comprising; four in leather cases, three hallmarked, one American and a white metal thimble, in green plush case. (5)
(from the Collection of the late Phyllis Savage)
£40-80

415
Fourteen reproduction English silver thimbles, including copies of early thimbles, commemoratives and pictorials. (14)
(from the Collection of the late Phyllis Savage)
£50-100

416
Ten English silver advertising thimbles, including; "James Walker The London Jeweller", five versions, one mis-shapen, another "Best Wishes From Salisbury and Son", "Pleasance And Harper Ltd. Jewellers", "Hovis Bread", "Story Journal" and "Andrews Liver Salt". (10)
(from the Collection of the late Phyllis Savage)
£80-120

417
Eleven American white metal thimbles, most with decorative borders, including "The Cow ...", rural homestead and another with silver gilt border. (11)
(from the Collection of the late Phyllis Savage)
£50-100

418
Seven Royal Commemoratives, comprising; one in brass "Her Majesty" thimble, England, the remainder in silver, comprising; EIRR with crown, EIRR 40 years, 60th Wedding Anniversary (No. 21), 60th Birthday, Charles and Diana, and another engraved with a Kings Beast. (7)
(from the Collection of the late Phyllis Savage)
£50-100

419
Ten English silver thimbles, including raised letter border examples, comprising; Bournemouth (The Spa), Stratford upon Avon (The Spa), another variant, Portsmouth (The Spa), Southsea (The Spa), Bude (The Spa), Ilfracombe (The Spa), Southend on sea (The Spa), holes, Isle of Man with symbol and ferns, and another, symbol only. (10)
(from the Collection of the late Phyllis Savage)
£100-200

420
Eleven thimbles relating to thimble societies, comprising; four in silver for TSL, another in enamel and one in porcelain, a silver example "Dorcas Thimblers", TC12006, another in silver and two ceramic examples. (11)
(from the Collection of the late Phyllis Savage)
£40-80

421
Five English silver commemoratives, comprising; EIRR and crown, Henry Griffiths & Sons, two for Charles and Diana, another Elizabeth II 40 Years, and another, Prince William of Wales, 1982. (5)
(from the Collection of the late Phyllis Savage)
£50-100

422

Five English silver commemoratives, comprising; Queen Victoria The Diamond Jubilee, RD No. 295282, GR and Crown (The Spa), EIRR and crown, by Henry Griffiths and Sons, Charles and Diana, architectural version, and another version. (5)
(from the Collection of the late Phyllis Savage)
£80-120

423

Five English silver commemoratives, comprising; EIRR silver Jubilee by James Swann & Son, Charles and Diana (6-panel), EIRR Coronation by Henry Griffiths, EIRR Coronation procession by James Swann & Son, and Papal Visit of Pope Paul II. (5)
(from the Collection of the late Phyllis Savage)
£50-100

424

Six decorative continental silver thimbles, comprising; an example with three young girls holding hands, another decorated with a heron or stork, a fable thimble, small hole, another "Pax", with three figural panels commemorating the Armistice of 1918, another with mistletoe to the border, holes to edge of top, and another with reeded laurel leaf border, largest 2.5cm. (6)
(from the Collection of the late Phyllis Savage)
£80-150

425

Nine silver thimbles, mostly American, all with decorative borders, including one with pierced border. (9)
(from the Collection of the late Phyllis Savage)
£50-100

426

A cased set of four silver thimbles, each with a border pattern incorporating an Assay Office mark, bearing the related hallmark for 1985.
(from the Collection of the late Phyllis Savage)
£30-50

427

Five continental silver thimbles, two of Cable style, and two mounted with shields, all with undulating rims. (5)
(from the Collection of the late Phyllis Savage)
£50-100

428

Five English silver thimbles, comprising; an example with double dot rim, makers mark "HW", another with oak leaf and acorn border by James Fenton, a small thimble with engraved frieze over a faceted rim, and two silver finger guards. (5)
(from the Collection of the late Phyllis Savage)
£60-100

429

Five English silver thimbles, comprising; three with nicely patterned borders, another with stone top and a ribbed finger guard with faceted rim. (5)
(from the Collection of the late Phyllis Savage)
£50-100

430

Twenty two silver and white metal thimbles, mostly English, including three children's and five charms. (22)
(from the Collection of the late Phyllis Savage)
£40-60

431

Five English silver thimbles, 18th/19th century, comprising; an example inscribed to the frieze "Tho Absent Ever Dear" over a faceted rim, another very faint "Though Absent Ever Dear", dents and hole to top, another "From a Friend", crudely initialled "HC", another with multiple reeded frieze, and another with Grecian key frieze and vacant shield cartouche. (5)
(from the Collection of the late Phyllis Savage)
£50-100

432

Nineteen Dorcas thimbles and three related boxes, including a 'Dorcas Junior', in cardboard box titled 'The Dorcas', another box, 'The Improved Dorcas', and a box lid only 'The Dorcas'. (22)
(from the Collection of the late Phyllis Savage)
£40-80

433

Two thimbles by Trevor Towner and five others, comprising; an example to commemorate 60 years of Queen Elizabeth II's reign, gilt London landscape border, No. 3 from a limited edition, boxed, another for The Millennium, Greenwich, 200, No. 21 from a limited edition, a silver thimble with 'jewelled' border, for TCG, and four other thimbles. (7)
(from the Collection of the late Phyllis Savage)
£40-80

434

A collection of thimble measures, including silver plated examples, slag glass, crested china, pewter, largest 9cm, smallest 4cm. (21)
(from the Collection of the late Phyllis Savage)
£30-50

435

Forty Seven Royal Worcester black mark thimbles, mostly hand painted and signed, comprising; fourteen of birds, seven of fruit, thirteen of flowers, thirteen transfer examples including six on ballet themes, together with a selection of Royal Worcester related thimble boxes. (47)
(from the Collection of the late Phyllis Savage)
£100-200

436

Ceramic thimbles by Graham Payne, Grimley, Worcester, all signed, mostly dated circa 1987, titled to rim, comprising sixteen birds, five insects, six flowers and trees, and eight others, together with a selection of related thimble boxes. (36)
(from the Collection of the late Phyllis Savage)
£40-80

437

Forty two ceramic thimbles, comprising; seventeen hand painted by various artists and of various subjects, nineteen transfer decorated examples by Spode, two by Coalport, two Royal Crown Derby and two others, together with a selection of related thimble boxes. (42)
(from the Collection of the late Phyllis Savage)
£40-80

438

Forty three ceramic thimbles, comprising; eighteen by Wedgwood, a modern Meissen example, thirteen continental or continental style examples, some hand painted, and eleven by Franklin Porcelain of birds, all titled, circa 1979, with a selection of thimble boxes for Wedgwood. (43)
(from the Collection of the late Phyllis Savage)
£40-80

439

A large collection of modern ceramic thimbles, including some on display shelves and stands, including; Caverswall, Sutherland, Scotland Direct, Fenton, together with a large selection of related thimble boxes. (qty)

(from the Collection of the late Phyllis Savage)

£50-100

440

Modern ceramic thimbles, comprising; a set of fifteen by Royal Crown Derby, based on historic patterns on a two tier mahogany finish stand, surmounted by a pincushion, 20cm high, together with the related book "A Collection of Thimbles", published by Royal Crown Derby, 1986, and a selection of related thimble boxes, together with twenty four other ceramic thimbles, various makers and including commemoratives. (39)

(from the Collection of the late Phyllis Savage)

£40-80

441

A collection of brass, aluminium and plastic advertising thimbles, and others. (qty)

(from the Collection of the late Phyllis Savage)

£20-40

442

A large collection of 20th century thimbles, in brass, steel and other metals, together with glass, wooden and other examples, and a selection of excavated thimbles. (qty)

(from the Collection of the late Phyllis Savage)

£30-50

443

Thirteen thimble companions, including; a French painted metal example, labelled "Scotch Whisky", with internal reel and needlecase, a brass Hudson's Soap example, and eleven others in metal and plastic, largest 9.2cm. (13)

(from the Collection of the late Phyllis Savage)

£30-50

444

Twenty one steel core thimbles and a Stratnoid in box, comprising; nine marked 'Pat', five Dreema, a Doris, a Dura, a Dorothy and four others. (22)

(from the Collection of the late Phyllis Savage)

£40-80

445

Eight modern enamel thimbles, comprising; Christmas 1983 example, another with a pheasant, both by Graham Payne Studios, 1983, and six floral, bird and landscape enamel thimbles. (8)

(from the Collection of the late Phyllis Savage)

£40-60

446

Nineteen various thimbles, a circular display box with glass top, containing eleven continental thimbles, 9.5cm diameter, and a rectangular thimble box. (21)

(from the Collection of the late Phyllis Savage)

£40-60

447

Thirteen various thimbles, comprising; six enamel and silver examples, by James Swann and Son, comprising four, each decorated with two cat's heads and two for the Silver Jubilee of Elizabeth II, two other silver thimbles, s.d., and five modern ceramic thimbles. (13)

£50-100

448

A rare silver pictorial thimble, the frieze with a view of Newstead Abbey and titled "Newstead", excellent condition, with cardboard box.

£150-250

449

A good silver thimble of heavy gauge, by Charles Horner, the frieze decorated with trailing thistles and leaves, Chester, 1902, with cardboard box.

£50-100

450

A gold thimble, with teardrop and dot decorated frieze.

£60-100

451

A quantity of thimbles and thimble compendiums, in various materials, a few silver and including an example with raised lettered frieze for Teignmouth. (qty)

£30-50

452

Six silver thimbles, comprising; "James Walker, The London Jeweller", "James Walker Wishes You Luck", "Andrews Liver Salts", and three others, all perfect, all hallmarked. (6)

£50-100

453

No lot

Norwegian and Related Thimbles

454

A silver thimble, probably Danish, with wave border, engraved above "Kristine Cuise(?) 31-11-14?", marked to the side "830/S/55a" below an amethyst coloured top.

(from the Collection of the late Phyllis Savage)

£40-80

455

A Norwegian silver and enamel thimble by Aksel Holmsen, marked to the interior apex "925S/pliers and compass mark/2", enamelled with a snow scene of a single reindeer pulling a Sami in a sled, below a moonstone top, cracked across the centre top.

(from the Collection of the late Phyllis Savage)

£100-200

456

A Norwegian silver and cloisonné enamel thimble by Marius Hammer, marked to the interior of the apex "hammer and M/930S", in the 'peaks and dots' pattern, the peaks in blue, the dots in white, minor enamel loss, below a blue moonstone top.

(from the Collection of the late Phyllis Savage)

£100-200

457

A Norwegian silver and enamel thimble by David Andersen, marked to the interior of the apex "Norway/Sterling/balance/D-A/925S/3", enamelled with a double scene, each of a single reindeer pulling a Sami in a sled in a winter landscape below a waffle top.

(from the Collection of the late Phyllis Savage)

£200-400

See illustration on front cover.

458

A Norwegian silver and enamel thimble by Aksel Holmsen, marked to the interior apex "925/pliers and compass mark/Norway/I", enamelled with an elegantly dressed woman gazing at a sailing boat on a lake, with trees and mountains, moonstone top.
(from the Collection of the late Phyllis Savage)
£200-400

See illustration on front cover.

459

A Norwegian silver and cloisonné enamel thimble by Marius Hammer, marked to the interior of the apex "hammer and M/930S", in the 'peaks and dots' pattern, the peaks in turquoise, the dots in white, minor enamel loss, below a moonstone top.
(from the Collection of the late Phyllis Savage)
£100-200

460

A Norwegian silver and enamel thimble by Aksel Holmsen, marked to the interior apex "pliers and compass mark/Norway/Sterling/925S/2", enamelled with a Viking ship and the midnight sun below a waffle top.
(from the Collection of the late Phyllis Savage)
£150-250

See illustration on front cover.

461

A Norwegian silver and enamel thimble by Nils Elvik, marked to the interior of the apex "925S and horseshoe/NE", enamelled with a moose, trees and birds in rainbow tones, below a moonstone top.
(from the Collection of the late Phyllis Savage)
£300-500

See illustration on front cover.

462

A Norwegian silver and enamel thimble by David Andersen, marked to the interior of the apex "3/1925S/1888-1925 mark", enamelled with a single reindeer pulling a Sami in a sled, in a snow landscape below a moonstone top.
(from the Collection of the late Phyllis Savage)
£300-500

463

A Norwegian silver and enamel thimble by Aksel Holmsen, marked to the interior apex "pliers and compass mark/925S/2", enamelled with a moose and forest scene with birds, below a moonstone top.
(from the Collection of the late Phyllis Savage)
£200-400

464

A Norwegian silver and enamel thimble by David Andersen, marked to the interior apex "925S/1888-1925 mark/Made in Norway/2", decorated in wavy bands of blue guilloche enamel below a moonstone top.
(from the Collection of the late Phyllis Savage)
£100-200

465

A Norwegian silver and enamel thimble by Aksel Holmsen, marked to the interior apex "pliers and compass mark/Norway/Sterling/925S/2", enamelled in vertical guilloche with additional enamelled flowers to the rim, below a waffle top.
(from the Collection of the late Phyllis Savage)
£100-200

466

A Norwegian silver and enamel thimble by David Andersen, marked to the interior of the apex "Norway/Sterling/balance/D-A/925S/2", enamelled on a white vertical guilloche ground with blue flowers and leaves below a waffle top.
(from the Collection of the late Phyllis Savage)
£100-200

467

A Norwegian silver and enamel thimble by Olaf Hjortdahl, marked to the interior of the apex "925S/five petal flower over a nail or pin", in pink guilloche enamel with clusters of flowers below a moonstone top.
(from the Collection of the late Phyllis Savage)
£100-200

468

Two Norwegian silver and enamel thimbles, one by David Andersen, comprising; a cream guilloche enamel example marked to the interior of the apex "D-A/Norway/sterling 925S/2" below a waffle top, the other in blue enamel below a moonstone top, marked to the interior of the apex "925S". (2)
(from the Collection of the late Phyllis Savage)
£150-250

469

A Norwegian silver and enamel thimble by David Andersen, marked to the interior of the apex "925S/1888-1925 mark/2", in purple enamel below a moonstone top.
(from the Collection of the late Phyllis Savage)
£100-200

470

A Norwegian silver and enamel thimble by David Andersen, marked to the interior of the apex "925S/1888-1925 mark/2", in blue enamel below a moonstone top.
(from the Collection of the late Phyllis Savage)
£100-200

471

A Norwegian silver and enamel thimble by Aksel Holmsen, marked to the interior apex "pliers and compass mark/Norway/sterling/925S/1", enamelled in vertical guilloche in green, below a waffle top.
(from the Collection of the late Phyllis Savage)
£80-120

472

No lot

473

No lot

Misc. Sewing Tools and Related Items

474

A collection of Cantonese ivory and bone sewing tools, mostly carved, comprising; three clamps, largest 10.6cm, a shuttle, 6cm, two crude thimbles, and five various cotton barrels, one lacking spindle. (11)
(from the Collection of the late Phyllis Savage)
£50-100

475

A mixed lot, comprising; three metal bell form knitting needle gauges, another triangular, a wooden lucet, a bone tatting shuttle, a bodkin, a pair of bone knitting needle protectors, another pair converted from thimbles, a swivel notelet with George and the Dragon pierced gilt metal cover, a circular vegetable ivory box, and a coquilla nut egg, lucet 9.5cm. (12)
(from the Collection of the late Phyllis Savage)
£40-60

476

A mixed lot, to include; a modern falling side sewing companion, two modern enamel cylinder form needlecases, an olivewood egg, a pin dispenser, a coquilla box, treen and sundries. (qty)
(from the Collection of the late Phyllis Savage)
£30-50

477

A counter top display cabinet, inscribed to the front above three drawers "Sew With Pure Silk – The Perfect Thread for All Machine and Hand Sewing", with trade mark and two reels, the drawers compartmentalised and numbered, the sides with conforming inscriptions, 36cm x 36cm x 30.5cm high.
£50-100

478

A rare pressed paper silk holder, modelled in the form of tomb tablet with applied Baxter style print of a mother with children at play, containing two cards of Brown, Davis & Halse's Patent Mandarin silk with patent date 1855, 9.5cm.
£40-80

479

A split and coloured straw work skein holder and a similar bodkin case, the skein holder of rectangular form, the outer sleeve with cut panels revealing flowers, birds and swords, colours bright and fresh, 22.5cm, the cylinder bodkin case with geometric panels, some minor losses, 12.7cm. (2)
£80-120

480

A fine French gilded and etched steel 'Souvenir' notebook, the cover with a central panel of a young woman within trellis and scroll borders with bird spandrels, the reverse inscribed 'Souvenir' with leaf scrolls, red velvet spine, interior in red silk with pocket containing folded calendar for 1849, the gilded edge notebook divided for days of the week, pencil closure, in tissue within the original cardboard box inscribed in ink to the base '137 Years Old', 8cm x 5.5cm.
£100-200

481

A child's sewing machine, circa 1910, in original box, the German machine in black and gilt, size O, complete with clamp, printed instruction sheet, and a McCall doll's dress pattern, the box with colour print of a mother and child with the machine, box, 14cm x 12.5cm x 6cm.
£50-100

482

Two educational sample books, the first inscribed to the inner cover in ink "These specimens were made with the attachments on a Singer Sewing Machine by Rosamund Willis at the class held by Miss English at Singer's Sewing Machine Shop, 303 Westgate Road, Newcastle on Tyne, March 1931", eight titled sample pages, 22.5cm x 16cm, the other of seven sample pages with linen cover, inscribed "E", circa 1920, 27.5cm x 18cm. (2)
£30-50

483

A mixed lot, comprising; a mother of pearl disc form waxer with central turquoise coloured boss, 2.1cm diameter, a silver girdle form waxer in the style of Joseph Taylor, decorated with roses, thistles, etc., 1.6cm, a silk pin wheel, one side painted en grisaille with a child praying, 5.5cm, a leather and bone mounted purse or spectacle case with internal petit point panel, 16cm, and a triangular leather scissor case with three pairs of matched scissors, 15cm. (5)
£50-100

484

A 19th century blackened brass handkerchief chatelaine, the hinged circular box pierced to one side with a flowerhead motif, on a hanging chain with roundel links, box 8.5cm diameter.
£40-60

485

A mixed lot, comprising; a mother of pearl disc form pincushion with turned and carved decoration, 3.5cm diameter, a pressed paper and beadwork booklet, titled "Souvenir 1854", the interior with handwritten verse "If scissors, knife or pin should offend ...", containing a plaster, ribbon hinges, 9.5cm x 6cm, and two sewing companions, one in red leather, with mother of pearl and other tools, 22cm, the other covered in paper with plastic and other tools, 19.5cm. (4)
£50-100

486

Twenty four sewing and other tools, suitable for sewing boxes, all with carved mother of pearl handles, including stiletos, button hooks, manicure implements, largest 11.2cm. (24)
£50-100

487

Forty three sewing and other tools, suitable for sewing boxes, all with plain mother of pearl handles, including stiletos, button hooks, manicure implements and others, largest 10.5cm. (43)
£50-100

488

Forty sewing and other tools, suitable for sewing boxes, all with plain bone handles, including stiletos, button hooks, manicure implements and others, largest 13cm. (40)
£50-100

489

Thirty five sewing and other tools, suitable for sewing boxes, all with plain bone handles, including stiletos, button hooks, manicure implements and others, largest 23cm. (35)
£40-60

490

Twenty four sewing and other tools, suitable for sewing boxes, mostly with turned bone handles, including stiletos, crochet hooks, chuck handles, button hooks, together with a leather tool/skein holder with three silver tools, 8.5cm x 4cm. (25)
£50-100

491

A group of bone gauges and netting tools, comprising; a 19th century paper covered cylinder case with numerous bone gauges, 21cm, a bone gauge cylinder, 16cm, and a selection of wooden, steel and bone netting needles and shuttles, largest, 29cm. (qty)
£40-80

492

A mixed lot, comprising; three pairs of knitting needle protectors, two pairs in turned wood, one in bone, a beadwork decorated drawstring bag, a vegetable ivory acorn form thimble case with reel and needlecase, 5.5cm, a wooden lucet, 9.5cm, a horn purling hook, 7.2cm, eleven various bodkins, a 19th century 12-inch folding rule, a gilt retractable pencil by W. A. Hicks, a large bone stiletto/needlecase, 10cm, a white metal notelet commemorating J. F. Hanne, 5.5cm, two metal pin boxes, and a brass "Briggs Patent Teneriffe Wheel", with two samples. (qty)
£50-100

493

A collection of fifty five egg and mushroom form darners, mostly in wood. (qty)
£30-50

494

A pair of modern purpose-built counter display cases for sewing tools, in teak finish, glazed hinged lids with stays, baize lined, 58cm x 38.5cm x 9.5cm. (2)
£50-100

495

A modern purpose-built counter display case for sewing tools, in teak finish, glazed hinged lid with stay, baize lined, 58cm x 38.5cm x 9.5cm.
£40-60

496

A mixed lot, including; large wooden winders, one transfer decorated with a female figure, 14cm, a Bakelite reel and thimble stand, 11cm diameter, a pin box, silk lid panel, sundry sewing and manicure tools, belt buckle, wooden cylinder boxes, reels and sundries. (qty)
£30-50

497

No lot

498

No lot

Miscellaneous

499

A 19th century Chinese carved wood rectangular box, the lid carved with a panel of figures amid pavilions and trees over conforming sides, on turned bun feet, silk lined interior, 27cm x 12cm x 10cm.
(from the Collection of the late Phyllis Savage)
£30-50

500

An early 20th century continental white metal and enamel decorated lady's compact of circular form, the hinged lid with two cats and a small group of flowers, the base in blue guilloche enamel, the interior with mirror over a rotating gilt disc with pierced sections, stamped "925" and maker's mark GS.
£80-120

501

A pair of Victorian heart shaped shellwork frames, each with a central heart shaped glazed insert incorporating a colour print of a battleship with seaweed and shells, on easel supports, each 24cm high, 20.5cm wide max. (2)
£80-120

502

A group of items formed from shells, comprising; a square frame incorporating a circular glazed print, a pier and sailing ship with seaweed and shells, 22cm square, a hand mirror with oval plate, 28.5cm, a shell work figure holding a basket, 17cm, a shell work rectangular jardinière and flowers, 21.5cm high, and a damaged shell on stand. (5)
£50-100

503

A set of twelve silver buttons in two sizes, each pierced with a flower, stem and leaves, largest 2.5cm, smallest 1.5cm, unmarked. (12)
£40-80

504

No lot

505

No lot

Needleworks

506

A pair of small 19th century samplers, each depicting a winged beast on plinth, within meandering floral border, mounted on card, each 10.5cm square, and a miniature needlework of flowers, in leather mount, 4.7cm. (2)
£20-40

507

An American Indian beadwork purse or bag of pocket form, worked on a blue cloth with coloured beads with a cross below an arch and emerging from flowers, ribbon bound borders and ties, part of bead fringe lacking, 19cm x 12.5cm max.
£50-100

508

A pair of mid-18th century uncut embroidered sleeve frills, on cream ribbed silk, embroidered with a profusion of entwined floral and foliate designs in polychrome silk and couched metal threads, with a scalloped border to the lower edges, 30cm x 45cm. (2)
£150-250

509

A 19th century folding footstool, the walnut frame below a floral beadwork rectangular top, 28cm wide, and a 19th century beadwork cylinder form basket, the red cloth ground elaborately decorated with clear beads with looped fringe, 7cm diameter. (2)
£40-80

510

A late 19th century child's embroidery frame in paper covered rectangular box, the frame complete with work in progress, the box with sliding lid with a lithographed hand coloured print of three young ladies at needlework and titled "The Little Embroiderer/Die Kleine Stickerin/La Petite Brodeuse", 25cm x 22cm x 5.5cm.
£50-100

511

Eight educational samplers, mostly alphabetical, late 19th/early 20th century, largest 26cm square. (8)
£20-40

512

A delightful punnet of thirty silk strawberries, made by pupils of the Royal School of Needlework, circa 1890, each approximately 2.8cm, the punnet 17cm.
£100-200

513

Two framed educational sample panels, comprising; an example with four samples, including a miniature apron inscribed in ink "Florence R. Jackson Aged 15 years, August 1896 Standard VII", 38.5cm x 29cm, the other with two darning samples, 34.5cm x 29cm. (2)
£40-60

514

Two late 19th/early 20th century embroidered Chinese purses, comprising; a circular example, 7.5cm diameter, and a belt mounting example, with two compartments, worked with temples amid trees and flowers, 14cm x 8cm. (2)
£50-100

515

Two late 19th/early 20th century embroidered Chinese purses, comprising; a belt mounting example with four compartments embroidered in gilt thread with dog of fox and fish, 12.5cm x 8cm, and another mounted on cord with sliding cover above beaded tassels, 4.7cm. (2)
£50-100

516

A pair of late 19th/early 20th century Chinese red silk and embroidered shoes for bound feet, 12cm. (2)

£80-120

517

A pair of 19th century floral embroidered silk shoes for a baby, and a notebook in silk covers, the shoes with floral and gold thread, stitched ribbon ties, 12cm, the notebook embroidered with ovals of beaded fruiting vines, the notebook dated for 1831, 12cm x 8.2cm. (3)

£50-100

518

Three pairs of 19th century children's/baby's shoes, comprising; a pair in coloured beadwork, 10.5cm, a tapestry pair, 12cm, and an embroidered pair, 9cm. (6)

£50-100

519

An Edwardian ivory ground shawl, worked with flowers within openwork fringed border, 192cm x 168cm, two lace collars, and a length of gold finish trim. (4)

£40-80

520

A sampler by "Elizabeth Parham March 30th 1829", worked in green and grey with Adam and Eve, flowering jardinières, angels, lion, lambs, a stag, swans and with a verse "virtues the ..." within a trailing border, 41.5cm x 30cm, in glazed period frame.

£150-250

521

A sampler by "Sarah Jane Brunner, aged 14 Years, Lullington School, 1866", worked with alphabets and numerals within a border, 2cm x 22cm, in modern glazed frame.

£40-60

522

No lot

523

No lot

Lace Making

524

A collection of lace samples and trimmings, 19th century and later. (qty)

£50-100

525

Twenty 19th century lace bobbins, variously decorated. (20)

£40-60

526

Twenty 19th century and later bone lace bobbins, some decorated, and a lace pricker. (21)

£30-50

527

Six 19th century bone lace bobbins, one inscribed "Love Don't be False", "Lucy", another indistinctly named, and three other decorated examples. (6)

£30-50

528

Forty four 19th century wooden lace bobbins, and a few spare beads. (44)

£30-50

529

No lot

530

No lot

531

Fifty eight lace bobbins, comprising; seven named bone examples – Jane, James, Betsy, Lucy, Charles and two others, worn, a wooden example – Joseph, ten variously decorated bone examples and a board mounted with thirty nine wooden and bone bobbins, variously decorated. (58)

£50-100

532

Eighty seven lace bobbins, mostly wooden, 20th century. (87)

£40-60

533

Seventy eight lace bobbins, all wooden, variously decorated, 19th century. (78)

£40-60

534

Seventy two lace bobbins, comprising; thirteen bone, including inscribed examples, mothers and babes, eight wooden inscribed examples, eleven decorated wooden examples, thirty seven in bone or simulated bone, three glass, and a collection of loose spangles and lace pins. (72)

£50-100

535

A collection of lace maker's accessories, including two pillows, two bobbin winders, lace prickers, three boxes of threads, three sets of wooden bobbins and sundries. (qty)

£30-50

536

Reference books and material related to lace and lace making, comprising; seventeen books, including Wright (T.): The Romance of the Lace Pillow, 1919, together with small format publications, cuttings, copies of Lace magazine, etc. (qty)

£20-40

537

A collection of lace, whitework, tatting, etc., numerous pieces including a crude sample book inscribed "M. Herbage, 21 The Crescent, Croydon", 16.5cm x 12cm, a framed tatting sample, and a printed handkerchief commemorating the theft and return of "The Stone of Destiny", 1952. (qty)

£40-60

End of sale

Absentee Bidding Form

Paddle number

--

This sale will be conducted in accordance with our Conditions of Sale and bidding and buying at the sale will be regulated by those Conditions. You should read those Conditions which set out the charges payable by you on the purchases you make and other terms relating to bidding and buying at the sale. Please ask any questions you have about the Conditions before signing this form.

Please provide details of the lots on which you wish to place bids at least 24 hours prior to the sale. Bids will be rounded down to the nearest increment. New bidders must also provide proof of identity when submitting bids. Failure to do this may result in your bids not being processed. Bleasdales Limited will endeavour to execute these bids on your behalf but will not be liable for any errors.

If posting this form please contact us to ensure we have received it prior to the Sale date.

[illegible]

The Summer Sewing Sale		Sale date: 22 July 2015	
Sale no:		Sale venue: Lord Leycester	
Title			
Last name and initials			
Company name			
Address			
City		County	
Postcode		Country	
Telephone daytime			
Telephone evening			
Telephone mobile			
Fax			
Email			
Are you acting as a private <input type="checkbox"/> or a trade <input type="checkbox"/> buyer?			

BY SIGNING THIS FORM YOU AGREE THAT YOU ARE BOUND BY AND UNDERSTAND OUR CONDITIONS OF SALE. THIS AFFECTS YOUR LEGAL RIGHTS.

Your signature	Date July 2015
----------------	-----------------------

FOR OFFICE USE ONLY

Identification seen: Driving Licence ☐ Passport ☐ C/C ☐ Other _____ Date _____ Time _____ Taken by _____

Surname & Initials

Paddle number

--

[illegible]

BY SIGNING THIS FORM YOU AGREE THAT YOU ARE BOUND BY AND UNDERSTAND OUR CONDITIONS OF SALE. THIS AFFECTS YOUR LEGAL RIGHTS.

Your signature

Date

July 2015

FOR OFFICE USE ONLY

Identification seen: Driving Licence ☐ Passport ☐ C/C ☐ Other _____ Date _____ Time _____ Taken by _____



13



14



15



16



17



18



19



20



21



22



23



24



Sale Venue: The Great Hall, The Lord Leycester Hospital,
Westgate, High Street, Warwick, CV34 4BH

Bleasdales Ltd.
The Stables, 15 Imogen Gardens, Warwick, England, CV34 6FB, England
t: +44 (0) 7983 304880
rvb@bleasdalesltd.co.uk