

BLEASDALES

The Online Sewing Sale

Limited

Incorporating:
Tunbridge Ware, Needleworks and Buttons
Including a Connoisseur's Collection, Part 1

www.the-saleroom.com

Direct Link: www.bit.ly/sewingsale

Wednesday 22 July 2020 Commencing at 10am





1



2



7



3



4



8



10



15



16



17



18



12



20



25



27



30



31



33



34



35

The Online Sewing Sale

the-saleroom.com

Incorporating:

Tunbridge Ware, Needleworks and Buttons

Weds 22 July 2020

Commencing at 10am

www.the-saleroom.com

Direct Link: **www.bit.ly/sewingsale**

Viewing

Every lot in our sale will be published online with full catalogue details and at least one colour image at: www.bit.ly/sewingsale from Mon 22 June or one-to-one personal viewing by arrangement with Robert Bleasdale 07983 304880

Sale enquiries

Prior to view and sale
R.V. Bleasdale 07983 304880
rwb@bleasdalesltd.co.uk

Updated sale information and results

www.bleasdalesltd.co.uk

Catalogue: £12 inc. UK P&P

£15 inc. worldwide P&P

Absentee bids

One way to bid is by completing an absentee bid form prior to the sale.

Once again you will need to register your details, name, address and contact number.

We may contact you to check your identity.

Tell us which lots you are interested in and the maximum bid you wish to leave. Please remember that there will be an additional buyers premium charge on top of your maximum bid, which is 20% of the hammer price. You will pay no extra charges to the-saleroom.com. You can return your signed form (see back of catalogue) by post or email. If you are successful we will let you know within 48 hours.

Shipping:

After the sale please contact us to arrange postage using our own at cost service please email rwb@bleasdalesltd.co.uk or by telephone 07983304880. Please contact us before paying your invoice so you can avoid the need to make two separate payments.

Alternatively you may arrange collection in person on a one to one basis subject to social distancing and any Government regulations or restrictions which may be in place at the time. Full details of where to collect will be included with your appointment confirmation. We will do our best to accommodate all reasonable requests

Payment

We are only able to accept payment by cheque, cash or bank transfer. We are not able to accept payment in excess of £5000 in cash per sale in order to satisfy current legislation. In order to keep our buyer's premium to a minimum, we do not accept payment by credit or debit cards.

Our Bankers

Lloyds, Leamington Spa

Sort code: 30-94-93

Account no: 00302603

IBAN: GB24 LOYD 3094 9300 3026 03

BIC: LOYDGB21137

Press and Marketing

Chantal Haddon
01728 860924 or
07501 116934
cfhaddon@gmail.com

Conditions of Sale

Our Conditions of Sale, under which this sale is conducted, are available via our website www.bleasdalesltd.co.uk or on request. Our conditions are based upon recommended Conditions of Sale approved by The Society of Fine Art Auctioneers and The Royal Institute of Chartered Surveyors. Your special attention is drawn to conditions relating to online bidding via the-saleroom.com

Privacy Policy

For details of our privacy policy, see: www.bleasdalesltd.co.uk/auctions/privacy-policy
If you bid in the sale and are successful you will pay the hammer price plus a premium of 20% of the hammer price. You will pay no extra charges to the-saleroom.com

Our printed catalogues provide comprehensive information about all the lots included in the sale as well as illustrations and guide estimates. Once you have decided which lots you are interested in you can then contact us to get further information about the condition of an individual item or to place your bid.

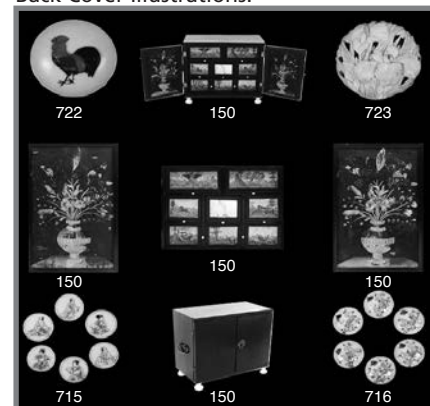
Cites Regulations

Please be aware that certain Lots in this sale may be subject to the CITES regulations if exporting these items outside the EU. These regulations may be found at www.ukcites.gov.uk

Front Cover Illustrations:



Back Cover Illustrations:



Tips on bidding online at timed sales:

(Please note these are bidspotter tips - they are a partner organisation to the-saleroom.com)

<https://bit.ly/timed-sales>

<https://bit.ly/timedsaletips>

Catalogue Design: Dave Steele & Zani Franklin

Collections in this sale

The Late Claire Gilchrist's Button Collection Part 2

Claire started collecting buttons in the 1960's, she was fascinated with the history of fashion and manufacture through the ages and the variety of materials used, from the humble cotton Dorset knobs, to the elaborate French enamels, and her search for examples of the whole spectrum took her to auctions in Paris and antique fairs all over the country, she was a member of the British Button Society for many years and amassed a collection of beautiful buttons.

Sheila Williams

I started to collect needle gauges when I realised that not all bell gauges were the same. There were different calibrations and, most notably, different trade-marks. At the time I was running a small group of friends, knitting items which we sold for our local hospice. Its charity shop kept us supplied with yarns, old knitting bags and knitting pins (when they weren't regarded as weapons of mass destruction).

Invariably, at the bottom of old knitting bags there would be a needle gauge, and this is how it began. Soon I was searching charity shops for more and for just a pound or two I could buy even some of the rarer ones. This, of course, was before they became desirable to other collectors.

Rummaging around fairs, I began to look for items connected with hand knitting; and so my hoard grew with wool winders, Bakelite wool-ball holders and needle boxes. I had over 100 half dolls, most with their tea-cosy gowns, that had to be housed on specially made shelves. Like all collectors I became obsessive and my house began to look a bit like a museum.

When I realised that there was very little information about the gauges, I began to research their history and manufacture. Being the daughter of an engineer, I was specially interested in the working conditions in the Victorian mills and small workshops. So much of this history was lost when manufacture went abroad after World War Two and the mills closed, most to be demolished. Nevertheless, with the help of the Needle Museum at Forge Mill in Redditch and their collection of trade catalogues, I was beginning to piece together an idea of the trade. More help at Birmingham's Central Library furnished me with a wealth of information about the mills and manufacturers and I was able to produce a small book.

Sadly, when I recently moved to a flat, my collection just had to go. I bequeathed the half-dolls to a grand-daughter and I could have given the rest to a museum or guild, but I feared the collection might be stored away out of sight. What I really wanted was for other collectors to have the joy of the hunt, just as I did.

The Late Mary Wheelhouse's Button Collection

These buttons were lovingly collected by Mary Wheelhouse known to everyone as the 'Button Lady'. Mary was born in Kiel, Germany and met and fell in love with Colin whom she married in 1949 in Barnsley. They lived in Ash Vale in Surrey for over 50 years. Her love for antiques started when walking the dog she found some interesting antiques in the rubbish dump which was once behind her house. She started buying and selling silver antiques, but it wasn't long before she developed a passion for collecting buttons. She was no stranger to auction houses and antique markets, particularly Bermondsey. Her knowledge on the topic was vast and she had respect from many people, far and wide. Over forty years Mary had amassed lots of rare and beautiful buttons which she proudly displayed around her home. She was very generous and would happily give some of her buttons to friends and now in her death, all the money from this sale is going to charity.

A Connoisseur's Collection

This collection was formed over a thirty year period and grew to spectacular proportions. A gradual reduction in the size of the collection has taken place over the last five years with one hundred or so lots in each of our sales. At the beginning of this year the owner took the decision to move and the last, or at least nearly the last of the collection is included in this sale and our November 18th sale.

It's owner has collected with pleasure, passion and vigour with purchases not only from my earliest sales with Phillips and Bonhams but also from established specialist dealers and the occasional unsuspecting general dealer.

I have always looked forward to my visits which often resulted in lively conversations over characters, events and turns which shaped the collection as well as reminiscences as to where items were discovered and acquired. It has given great pleasure to its owner, I am sure it will now give pleasure to those who are able to acquire items from it.

Ivory legislation affecting future sales

As many clients will know the UK Government has passed legislation which will bring to an end the sale of ivory within the UK with a very few exceptions. Despite the Government's position it is unclear when the legislation will come into place, three proposed dates have passed and given the current distractions of Brexit and other issues we do not expect the new proposed implementation date to be any different. We do however expect the ban to come into force in 2020 and our next sale (November 2020) is likely to be the last which will include ivory items.

The legislation is currently being challenged in the courts by a number of parties which disagree with the assumptions that have been made, indeed many believe that the proposed legislation will not only lead to the destruction of works of art and cultural artefacts but will make the slaughter of those elephants remaining even more likely.

Tunbridge Ware

1

A Tunbridge ware box by Edmund Nye, the lid inset with a floral mosaic, the sides with a band of geometric and leaf scroll mosaic on an oak ground, piano type hinge, the divided base now fitted with two inkwells, the base with label 'Edmund Nye, Manufacturer, Mount Ephraim and Parade, Tunbridge Wells', 12.7 x 7 x 8.5cm.

£60/100

2

An early 19th Century Tunbridge ware rectangular white wood box, the sliding lid with chequer strung border and painted with a floral border encircling a colour print of a castle or cathedral, 9 x 6.5 x 5cm. (From a connoisseur's collection)

£50/100

3

A small white wood sewing pannier, probably early Tunbridge ware, of rectangular form, the fruit and leaf decorated pin hinge lid below a swing handle with decoration conforming to the lid border, pink paper lined interior, 12.5 x 8.2 x 10.5cm with handle raised.

(From a connoisseur's collection)

£40/80

4

A rare circular paint and print decorated early Tunbridge ware pin cushion, of circular form one side with domed velvet pin cushion within coloured lines, the other side domed with a colour print of a bay windowed country house within colour line painted border, remnants of ribbon suspension, 5.7cm max. dia.

£80/120

5

A Tunbridge ware needle case and a waxer, the cylinder needle case in stickware with geometric end panels, screw thread, 8.2cm, the rosewood waxer of barrel form with stickware ends and now containing a brass thimble, 3cm. (2)

£50/100

6

A rectangular coromandel wood Tunbridge ware box by Thomas Barton, the sides with a band of cross form geometric mosaic, the lid in cube pattern with a border of mosaic, slight loss to edge veneer not affecting mosaic, printed label to base 'T. Barton Late Nye.....', 24 x 8.5 x 6.4cm.

£100/150

7

A Tunbridge stick ware thimble acorn, containing a silver thimble, 4.2cm.

£50/80

8

A Tunbridge stick ware thimble case, of egg form with star end pattern, 4cm.

£50/80

9

A painted Tunbridge ware white wood sewing clamp, with turned frame, the bulbous body painted with a house in rural landscape (slight loss), below a circular pin cushion with floral border, 15cm.

£50/100

10

A good Tunbridge stick ware teapot pin cushion and wheel, rosewood spout, velvet cushion, disc form handle, 7.5cm wide.

£100/150

11

Tunbridge ware – two pieces, comprising a rosewood geometric mosaic rectangular box with sliding lid pin cushion top, 8.7cm, and a geometric mosaic disc form pin cushion, 4.5cm. (2)

£50/80

12

An attractive Tunbridge ware needle book, the covers in geometric mosaic, velvet spine, mosaic borders to interior covers, complete with flannels, 7 x 4.5cm.

£40/80

13

Two Tunbridge ware tape measures, comprising a white wood cylinder example with line painted decoration, loss to overhanging top, complete with hand inked tape in nails, 3.2cm, and a turned cylinder example the overhanging top in geometric mosaic, printed tape commencing at 3 ins, 5cm high. (2)

£50/80

14

A 20th Century Tunbridge style painted cottage box, of circular form with 'thatched' roof and single chimney, 11cm high.

£40/50

15

An early painted Tunbridge ware white wood pin poppet in the form of a bee skep, the circular box base below a pin cushion, line and leaf painted decoration, 6cm high.

£100/150

16

Tunbridge ware – two pieces, comprising a good stick ware teapot pin cushion the brass wire handle with wooden insulator, 5cm high, and a stick ware disc form geometric pin cushion, 3.4cm dia. (2)

£80/120

17

A rare early Tunbridge ware painted and print decorated cottage reel box, the sloping roof with single chimney one long side with door, two windows and plants, the other long side with plants, one short side with a window and plants, the other with flowers and a titled colour print of Reculver Church, four division pink paper lined interior and open roof space, 9 x 8.5 x 9cm.

£500/800

18

A Tunbridge ware rosewood box of square form, the sides with a band of geometric mosaic, the cushion form lid with a bouquet of flowers in mosaic set in white wood within a floral mosaic border, red silk lined interior, complete with key, 15cm sq x 8cm.

£60/100

19

A Tunbridge ware rosewood glove box, of rectangular form, the lid with an inset mosaic panel depicting Eridge Castle within a geometric mosaic border, purple paper lined, 24.2 x 9 x 6.5cm.

£50/100

20

A good walnut Tunbridge ware tea caddy, the convex sides with a broad band of floral mosaic with a circular stickware escutcheon to the front, the cushion lid with a mosaic panel of Eridge Castle set in white wood within a border of geometric mosaic, the interior complete with two mosaic border lids, on bun feet, 24cm max x 14 max x 15cm.

£150/250

21

A Tunbridge ware mixed woods table reading or music stand, the stand with a panel of floral mosaic within white wood within a border of spalted oak and a further mosaic border and rosewood surround, the ledge in spalted oak with two brass swivel retainers, rosewood adjustable easel support, 31.7 x 25cm.

£80/120

22

A rosewood Tunbridge ware 'go to bed', the turned base to a geometric mosaic octagonal body, the top in star form mosaic with bone candle and match stand, three division interior, the base incorporating the striker, 5.2cm dia, 9.5cm high.

£40/80

23

Six variant Tunbridge ware napkin rings, in stickware and mosaic one with bone inset numeral, one inscribed internally 'D. Austen', approx. 4.5cm dia. (6)

£40/80

24

A rare set of twenty four Tunbridge ware circular draughts pieces, together with others comprising twelve black and twelve white wood with matching stickware and mosaic star form centres, three white slightly variant in thickness, 3.5cm dia, together with three other black, four white and a blank example. (32)

£100/200

25

A Tunbridge ware scent bottle box, of rectangular form, the burr maple ground with two bands of stickware geometric mosaic and a circular stickware escutcheon, the lid with a twin panel of geometric stickware within a conforming border, the three division interior with three glass scent bottles and stoppers, some chips and probably matched, 11 x 7 x 7cm.

£50/100

26

A Tunbridge ware obelisk form desk thermometer, the stepped base in geometric mosaic the plinth with three panels of floral mosaic and one in cube pattern, the ivory scale with mercury thermometer and flanked by three panels of cube work, 6cm square, 20cm high.

£80/120

27

An unusual rosewood Tunbridge ware string box, in the form of a bee skep raised on three turned feet, the top with a geometric mosaic star motif below a turned finial incorporating a cutter, internal reel, feet possibly replaced, 13cm high.

£50/100

28

Five variant Tunbridge ware napkin rings, in stickware, 4.5cm dia. (5)

£40/60

29

A Tunbridge ware Tangram puzzle, the square rosewood box with a geometric mosaic lid, complete with puzzle, 5cm sq.

£30/50

30

A Tunbridge ware rosewood sewing box, of rectangular form, the concave sides with a broad band of leaf mosaic, the cushion form lid with a mosaic bouquet of flowers inset in white wood within a border of floral and scroll mosaic, the interior re-lined in blue silk, lacking tray, with a key, 27 x 22 x 11cm.

£150/250

31

A scarce rosewood Tunbridge ware pin hinge rectangular box the lid with a fine mosaic panel depicting Romanoff House Tunbridge Wells, founded in 1832 as the Romanoff House School, and later renamed Rose Hill School, the view within a geometric mosaic border, old paper lined interior, 17.5 x 11 x 4.5cm.

£80/120

32

A Tunbridge ware framed panel of Eridge Castle, in mosaic set within white wood and a geometric border, in a conforming border rectangular frame, 14.5 x 20.2cm.

£50/100

33

A Tunbridge ware rectangular box of cut corner form, the sides with two bands of mosaic, the lower of Van Dyke pattern, the lid with a rectangular geometric mosaic panel within a geometric mosaic border, plum velvet lined interior, with a key, 13.6 x 9 x 5cm.

£50/100

34

A Tunbridge ware rosewood tea caddy, of rectangular form raised on bun feet, the sides with a broad band of floral mosaic, the lid with a view of Muckcross Abbey within white wood and border of geometric mosaic, the interior with two mosaic border lids, one repaired, 22.5 x 12.2 x 13cm.

£150/250

35

A Tunbridge ware birch veneered rectangular box, the sides with a stickware band, the lid with a mosaic panel flanked by two square form mosaic panels within a geometric mosaic border, paper lined interior, with a key, 20.2 x 7 x 4.2cm.

£40/80

36

A Tunbridge ware box and a brush, both damaged, the rectangular rosewood box with a broad band of floral mosaic, the lid with a mosaic floral bouquet set in white wood within a border of geometric mosaic, loss to rosewood below side bands, stringing and edge mosaic to lid, 24.2 x 8.7 x 6.6cm, the brush with a band of floral mosaic, some rosewood and mosaic border lacking, 17cm. (2)

£30/50

37

Three Tunbridge ware geometric mosaic border picture frames, two of Oxford type, one with a birthday card, 16 x 14cm, the other a silk Christmas card, 15.4 x 11.2cm, and a rectangular example with a floral painting, 7.2 x 10.7cm. (3)

£40/80

38

Two Tunbridge ware geometric mosaic border rectangular picture frames, each containing a WW1 silk card, each 16.4 x 11cm. (2)

£30/50

39

Tunbridge and related wares, five pieces comprising a modern circular mahogany box, the lid with a mosaic panel of a butterfly by Ben Bedford, 7cm dia., two Tunbridge ware geometric mosaic rectangular cribbage boards, one lacking bun feet, 23.8 and 22.6cm., another larger inlaid cribbage board, some inlay lacking, 30.5cm, and a Sorrento ware letter knife in the form of a shoe, 18.2cm. (5)

£50/100

40 – 42

No Lots

Tartan Ware

43

Tartan ware – two pieces, comprising a scarce dip pen, the white metal mount stamped 'G. Bac – Paris', 21.2cm and a page marker (Clanranald), 10cm. (2)

£30/50

44

Tartan and Mauchline ware – three pieces, comprising a scarce circular Tartan ware thread winder, 5cm, a button end Tartan ware (M'Lean) cylinder waxer, 2.8cm, and a Mauchline ware girdle form double ended pin cushion (Tibbie Shiel's Cottage, St. Marys Loch), 4.5cm. (3)

£50/100

45 – 47

No Lots

Tape Measures

48

Two brass novelty tape measures, comprising an example in the form of a mule or donkey, the replacement tape wound from the tail, now loose, 6cm and another in the form of a water mill with original worn tape, roof loose, plinth dented, 4cm. (2)

£50/100

49

An Austrian cold painted brass novelty tape measure in the form of a bird cage, the tape wound by rotating the cage, with a complete printed tape in inches and cm., marked 'London – made Austria', 6.5cm.

£80/120

50

A painted cast metal novelty tape measure in the form of a crown, complete printed retractable tape, 4.5cm dia.

£40/80

51

A novelty brass tape measure in the form of a half globe surmounted by a lion holding a glass ball, complete printed tape a little stained, 3.5cm dia.

£40/80

52

A gilt brass novelty tape measure the leaf scroll decorated cylinder base below a winder in the form of a boy and girl on a seesaw, printed tape in inches and cm apparently complete but knotted at the terminal, 3.2cm dia.

£40/80

53

Two novelty tape measures, comprising a brass cauldron, complete tape in inches and cm. marked 'London. Made in Austria', 3cm high, and a copper and brass coffee grinder with complete printed tape, 4.2cm. (2)

£50/100

54

A scarce silver tape measure commemorating the wedding of Victoria and Albert, of cylinder form with oval portrait busts and floral sprays, with original yellow silk printed tape with leaf border. 3cm.

£50/100

55

A celluloid novelty tape measure in the form of a seated camel, complete retractable printed tape, faded at the end with replacement safety pin end. 7.5cm.

£50/100

56

An attractive late 18th Century English silver filigree tape measure of cylinder form, quill work sides and base, domed flowerhead top, complete with original unmarked tape, 2.5cm.

£50/100

57

A scarce gilt brass novelty tape measure in the form of a barrel organ, the tape operating a 'tune' when pulled out or wound back, the complete printed tape in ins. and cm., 5.2cm.

£60/100

58

A scarce lacquered brass novelty tape measure in the form of a fairground carousel, the tape when pulled or wound back rotating the carousel, the complete printed tape in ins. and cm. 7cm.

£50/100

59

Two novelty tape measures, comprising a standing pig in white metal, the complete printed tape in inches and wound from the tail, 5.5cm., and a brass smoothing iron with agate insulator to the handle, the complete tape printed in ins. and cm., 6cm. (2)

£80/120

60

A lacquered brass novelty tape measure in the form of a mandolin, complete tape printed in ins. and cm., lacking end stop, 6.8cm.

£40/80

61

A gilt brass novelty tape measure in the form of the Coronation coach, complete tape printed in ins. and cm., wound from the roof finial, 7.5cm.

£50/100

62

A gilt brass novelty tape measure in the form of a tea kettle on stand, the complete printed tape in ins. and cm. and wound from the lid finial, 5cm high.

£50/100

63

A brass novelty tape measure in the form of an alarm clock, the complete printed tape in ins. and cm., and wound from the back activating the hands, stamped to back 'Germany', 5.5cm high.

£50/100

64

A lacquered brass novelty tape measure of circular form, the glazed top enclosing three miniature bone dice, complete printed tape in ins. and cm., the tape when pulled or wound from the base activating the dice, 3.7cm. dia.

£50/100

65 – 67

No Lots

Pin Cushions

68

A silver pin cushion in the form of the Coronation throne, Birmingham 1901 by Levi and Salaman, 4cm high.

£40/80

69

A 19th Century pin cushion of disc form, each side domed and pierced with a floral design revealing silk, 5cm dia.

£40/60

70

A good 18th Century silk pin ball, in coloured silk segments within a trellis of silk, with hanging cord, 4cm dia.
(From a connoisseur's collection)

£150/250

71

An early 19th Century disc form ivory pin cushion, with burnt circle decoration on a silk hanging loop, 4.2cm dia.

(From a connoisseur's collection)

£30/50

72

Three pin cushions, comprising an unusual red velvet crown shaped example, 4.5cm, a red velvet pumpkin emery, 3.2cm, and a circular example a reverse decorated domed glass panel to each side one depicting a robin, the other a blackbird, 5cm dia. (3)

(From a connoisseur's collection)

£50/100

73

An attractive combination pin cushion and needle flannel, contained within mother of pearl covers one initialled 'AMM', silver hinged catch, pin stuck borders, 5.7 x 4.7cm.

(From a connoisseur's collection)

£50/100

74

A documentary pin stuck pin cushion 1829, in red and yellow silk with tasselled corners, inscribed in pins 'Charity from Springfield Hall, Lancashire 1829', 12 x 10cm.
± Springfield Hall was erected in 1792 by James Hargreaves, he was succeeded by his son Henry who was residing there by 1824 and died in 1838.

(From a connoisseur's collection)

£50/100

75

Two early 19th Century velvet and floral painted square form pin cushions, one with gilt foil corners, the base with old ink inscription, 5.2 cm sq., the other of foot stool form, 5cm sq. (2)

(From a connoisseur's collection)

£40/80

76

A rare pressed cardboard pin disc commemorating the Great Exhibition of 1851, complete with pins and inscribed in raised lettering 'The Crystal Palace, London – Exhibition Pins For All Nations, 1851 – Peace On Earth and Good Will To Men – Peyton and Iles, London and Birmingham, Iles's Patent' around a central circular view of the Palace, pink paper backing, 6.6cm dia.

(From a connoisseur's collection)

£50/100

77

A charming early 19th Century hand painted and inscribed 'Forget me Not' pin disc, one side with a trompe de l'oeil design of a music sheet and two inscribed cards amid a border of flowers, the other side painted with a border of roses and forget me nots surrounding a verse 'This is affections Forget Me Not', some loss and damage to first side, 5.2cm dia.

(From a connoisseur's collection)

£50/100

78

A novelty pin cushion 'There was an old woman who lived in her shoe', the old woman in shawl and cloak with four children in a velvet shoe, 5.5cm.

(From a connoisseur's collection)

£40/60

79

Two 19th Century wire mesh pin baskets and a similar pin cushion, the baskets of oval form, each with a floral reverse glass decorated panel to the base, 10cm and 7.5cm, the pin cushion circular with pink velvet infill, 3.5cm dia. (3)

(From a connoisseur's collection)

£50/100

80

Four patchwork and pin stuck pin cushions and cards, comprising one formed from seven octagons, 5.7cm, a six point star form example, 7.5cm, a hexagonal example, 6cm, and a square form example in orange and green silk, 2.6cm. (4)

(From a connoisseur's collection)

£50/100

81

Four figural material pin cushions, comprising a red cloth pin stuck ladybird, 6.5cm, a black and white petit point dice, 2.2cm, a weighted black felt pig, 5.5cm, and a continental red velvet slipper, 7cm. (4)

(From a connoisseur's collection)

£40/80

82

Two pin stuck patchwork pin holders, comprising a hexacontagon with pin stuck and beadwork edges, 15cm high and another as a polygon with pin stuck edges and beaded points, 9.5cm. (2)

(From a connoisseur's collection)

£40/80

83

Four pin cushions and retainers, comprising a rectangular sampler form example, some loss, 7.5cm, another as the eight of spades, 4.2cm, a floral embroidered cushion form example, 4cm, and a geometric patchwork example decorated in beadwork, 4cm. (4)

(From a connoisseur's collection)

£50/100

84

Three pin cushions and emeries and a waxer, comprising a 19th Century disc form ivory example one side engraved 'Emery' the other with burnt circle decoration, 2.5cm, a cloth strawberry emery, a double ended pin cushion with silver girdle and a mother of pearl disc form waxer. (4)

(From a connoisseur's collection)

£40/80

85

An Avery style pin box, in gilt brass the base of oval reeded form below a swivel lid with a butterfly on a leaf, stamped to base 'Hutton and Co., London' and with diamond registration mark, 7cm.

£60/100

86

Four pin cushions, comprising a gold embossed foil book form example the spine titled 'Life of Queen Caroline', velvet infill painted with flowers, some loss to foil, 5.5cm, another of diamond form with gilt foil edges enclosing painted velvet panels, 5.5cm, a circular reverse glass decorated example 'Pembroke College/ arms of Pembroke College, Cambridge', 4.5cm dia., and an ivory and burnt circle decorated example with ribbon tie and purple velvet infill, 5cm. (4)

£50/100

87

An attractive Georgian tortoiseshell pin poppet, of curved triangular section and tapering form, the top with an engraved edge plaque, the interior of the lid fitted with a mirror over a metal hinge mount and red velvet infill, 5.5cm high.

£80/120

88

Two pierced bone pin cushions, comprising a wheelbarrow, 6cm, and a set of bellows, 6cm. (2)

£40/60

89

Two silver pin cushions, comprising a book form example, blue velvet infill, ring suspension, London, 1874 by Henry William Dee and further engraved 'Jenner and Newstub, 33 St James's Street and 66 Jermyn St.', 4.5 x 2.5cm, and an unmarked silver and purple enamel disc form pin cushion the reverse in leather, two small chips to white enamel border, 3.6cm dia. (2)

£50/100

90

Three pin cushions, comprising a late 18th Century engine turned rosewood and ivory example of vase form surmounted by a miniature ivory vase over worn silk infill, minor losses to rim, 8cm high, another 19th Century ivory pin cushion in the form of a woven basket, 2.5cm, and a disc form bone pin cushion, 4.5cm. (3)

£50/100

91

A Palais Royal style pin or thimble box, the mother of pearl hinged egg on a two wheel chassis pulled by a pair of mule, 10.5cm.

£40/80

92

Six pin cushions and retainers, comprising a velvet and brass mounted crown, 4cm, a copper and brass wheelbarrow, 9cm, a white metal swan, a natural shell example, a porcelain home made basket example and a vegetable ivory pin poppet. (6)

£50/100

93

Two mother of pearl thimble and pin boats, one inscribed to the sail 'A Present From Liverpool/Made in Germany', with a thimble and scent bottle, 12cm, the other with a thimble and ceramic sailor, 9cm. (2)
£30/50

94

A good sampler style knitted pin cushion of canted corner rectangular form, one side initialled and dated 'EBS 1823', amid geometric motifs on a green ground, the other with a bird on a branch a twig in its beak on a red ground, ribbon suspension, 5.5 x 4.5cm.
£100/200

95

A good sampler form pin card, neatly worked in red with alphabet and numerals and inscribed 'British School' within twin borders, pin stuck edge, ivory silk backing, 5cm sq.
£150/250

96

A sampler form pin card, worked in red with upper and lower case alphabets and numerals and inscribed 'Ann Salisbry', 5 x 4.6cm.
£100/200

97

A sampler form pin card, worked to both sides, one with a butterfly and inscribed 'Presented by F. Soar to her Grandmother' and to the other with an upper case alphabet and '1834 F. Soar' within trees and other motifs, 4.2 x 6cm.
£150/250

98

A fine late 18th/early 19th Century knitted pin ball in near mint condition, the green ground worked to one side in cream with a geometric flower and the initials 'MB' within a border and to the other side with a flowering branch, complete with decorative suspension loop, 4.5cm dia.
£800/1200

99

A large pin card sampler, of square form worked in blue with upper and lower case alphabets and numerals within twin geometric borders below a fancy ribbon suspension, pin stuck edge, 8cm sq.
£100/200

100

Two hat form pin cushions, comprising a jockey cap in alternate purple and cream segments edged with pins, 5.7cm, and a Welsh hat in purple silk with pin stuck brim, 7.5cm, with an ink inscribed paper 'Welsh Hat and Jockey Cap Made by Elizabeth Tucker'. (3)
£50/100

101

Two pin cushions, comprising a gilded brass example in the form of a standing cockerel with pierced back and standing on a circular base, glass eyes, 9.6cm high and a circular silver frame pin cushion, Birmingham, 1906, 5cm dia. (2)
£40/80

102

A cut and pierced bone pin cushion and a 19th Century ivory needle book, the first in the form of a wheelbarrow, 5.2cm, the needle book with pierced leaf design, silk binding worn, lacking flannels, 6.2 x 3.5cm. (2)
£30/50

103

Two pin cushions, comprising a mother of pearl disc form example with cut and roundel decoration, 3.6cm, and an embossed gold foil book form example titled 'Swifts Works Vol 2', 5.5 x 4.5cm. (2)
£40/60

104

Three pin cushions, comprising a white metal disc form example one side depicting a saint and inscribed 'St Bartholomew – Guard, Prosper and Bring Happiness', 5cm, a circular reverse glass decorated example 'The Pier Hastings', chips to edge, mirror to reverse, 4.5cm, and a pair formed from a walnut shell united by ribbons. (3)
£40/60

105 – 107

No Lots

Sewing Boxes, Etuis, Companions and other Boxes 108

A mid 19th Century miniature sewing set for a child or doll

contained in a mother of pearl hinged egg form case, the interior in blue velvet and cloth fitted with gilt metal needle case, stiletto, scissors and a brass thimble, bodkin lacking, 7.5cm.

£80/120

109

A good 18th Century gilded metal etui with fittings, the elaborate case with panels of female figures and military trophies within caryatids, scrolls, shells and engraved floral panels, hinged cover with a near full complement of fittings comprising pistol handle knife with folding steel blade, spoon with shell back bowl, engraved hinged 51/2 inch rule, cylinder pencil, corkscrew – possibly replaced, steel scissors with hinged 'loops', ivory swivel tweezers, pick, and bodkin, one space vacant, the case 10.5 x 4.5cm max.

£400/600

110

A late 19th Century/early 20th Century French ivory etui, the case of rounded corner rectangular for the lid engraved with monogram 'ACS', the interior flush fitted with silver tools comprising scissors, stiletto, thimble and needle case, bodkin lacking, the case, 12cm.

£80/120

111

A late 19th Century French ivory etui, the case of rounded corner rectangular form, the interior flush fitted with silver gilt engraved tools comprising shaped needle case, engraved border thimble, steel bladed scissors with fancy arms and loops, bodkin and stiletto, the case 11cm.

£100/200

112

A pair of Spa work rectangular boxes, possibly for playing cards, each with a titled view 'Place de Spa' and 'La gezonsrere pres de Spa' within decorative black and gilt borders, pink painted interiors, 11.8 x 9cm. (2)

£40/60

113

A Regency pen work rectangular sewing box, the lid with a complex scene of a Roman classical palace on an island within fruiting vine borders with winged horse spandrels, within a border of simulated tortoiseshell in burnt work, gilt metal pineapple escutcheon and ball feet, the interior in original pink paper with a lidded and compartmentalised lower section with pin cushion, two ivory reels, ivory tape measure, various silks and trimmings, 23 x 15 x 7cm.

(From a connoisseur's collection)

£200/400

114

An early 20th Century rectangular box decorated in 17th Century style needlework, the lid with a huntsman and dog, the sides with buildings, a stag, and a dog. 13 x 9 x 8. cm.

(From a connoisseur's collection)

£40/80

115

An early 19th Century Spa work rectangular box, the lid with a rectangular painted panel of a house and garden with figures perambulating, inscribed 'Vue de Litburgh', with key, 17.5 x 10 x 6cm.

(From a connoisseur's collection)

£50/100

116

A Regency paper covered sewing box for a child, of rectangular form, the domed lid with a basket of fruit ring handle over an acorn form escutcheon and raised on paw and scroll feet, the interior in original pink paper with divisions, 16 x 10 x 7.5cm.

(From a connoisseur's collection)

£40/60

117

A good green leather cased necessaire, early 19th Century with typed note of provenance, the grained green leather rectangular case with elaborate part enamelled catch opening to reveal a silk interior with silver lace borders, a mirror (cracked), a pair of glass scent bottles, a notebook, a needle flannel with compartments for additional items, 12 x 7 x 3cm.

±. With a typed note of provenance – Lady's necessaire, Circa 1830 in a tapestry bag of slightly later date (now lacking). It was handed down by the mother of the Bishop of Woolwich's wife to her daughter in 1855. (From a connoisseur's collection)

£200/400

118

A Regency red leather covered sarcophagal form small sewing box, raised on gilt brass ball feet with gilded leaf escutcheon, ring handle to lid and ball handles to sides, the compartmentalised interior in original green paper the lid interior with an oval print of cupid below the printed trade label of 'Dunkartons Repository – For Fancy Articles – 452 Strand, Wholesale and Retail', the original leather hinge now detached, with a few accessories, 15 x 13 x 6cm.

(From a connoisseur's collection)

£50/100

119

An attractive Regency pen work sewing pannier in the chinoiserie style, the sloping sides with figures, horse, elephant, and camel within flowering leaf borders, the pin hinge lid with oriental figures in a garden within a conforming border, the front fitted with a compartmentalised drawer below a swing handle, the drawer with three bone reels and silks, 18 x 13 x 20.5cm with handle up.

(From a connoisseur's collection)

£200/400

120

A rare late 18th Century miniature sewing box of rectangular form covered in grained brown paper with gilt foil borders and lid motifs, the interior in original vivid yellow paper, the hinged lid with original ribbon hinge support. The interior of the lid with a flap revealing a 'Memorandum' card and mounted with three foil decorated tool holders, the lower section compartmentalised with two thimble apertures, ten divisions complete with card winders, and a yellow card lid with gilt foil urn motif. Flanked to each side by two dummy books titled 'Poems' and 'Vol' fitted as pin cushion x 2, needle packet holder and yellow silk needle flannel, inscribed in ink to the base paper 'H. Scott, August, 8, 1837', 12 x 6.5 x 4.6cm.

(From a connoisseur's collection)

£500/800

121

A small early 19th Century continental floral decorated black ground box, of rectangular form below a curved border lid, decorated to all sides in gilt and polychrome with flowers, orange paper lining, 16 x 11.5 x 8.5cm.

(From a connoisseur's collection)

£40/60

122

An early 19th Century Palais royal sewing and toilet box, of rectangular form veneered in pale burr walnut, mother of pearl escutcheon and lid motif, the interior with internal lid mirror over a pair of silver topped cylinder bottles and a flush fitted tray containing a pair of mother of pearl silk winders and a damaged thimble only, the box with printed trade label 'Herbert Palais Royal Galerie de Pierre No 20', 26 x 18 x 10cm.

(From a connoisseur's collection)

£50/100

123

A Palais Royal satinwood small format sewing box, the concave front with mother of pearl escutcheon below a domed lid with pearl plaque below a steel carrying handle and further decorated with cut steel pins, the interior with mirror lined lid over a flush fitted ivory velvet tray with two mother of pearl snow flake winders, a mother of pearl thimble with double gilt border and enamel pansy motif, a rectangular mother of pearl needle case with gilt ferrule and pansy motif, a pair of scissors with steel blades and gilt mounts to mother of pearl pierced, floral and leaf carved arms below oval loops, a bodkin, a steel stiletto with mother of pearl handle with pansy motif, a cut glass spiral scent bottle with gilt screw cover, the tray with a fitted floral decorated pin cushion, complete with silk squab, the box on ball feet, 18.5 x 8 x 6.5cm.

(From a connoisseur's collection)

£300/500

124

A small early 19th Century cardboard sewing box, covered in blue paper the lid with a floral painted velvet panel within a gold foil border, the interior with wooden reel flanked by two rectangular pin cushions, 7 x 4 x 2.7cm.

(From a connoisseur's collection)

£30/50

125

A pair of early 19th Century French cardboard boxes probably bonbonnières, each rectangular with gold on cream decorated sides below glazed lids one with a petit point panel of two playing cards, the other three dice within decorated gold foil borders, 7.2 x 6cm. (2)

(From a connoisseur's collection)

£80/120

126

An early 19th Century French cardboard bonbonniere, the sloping sides in gold decorated green paper the lid inset with an opaque glass panel decorated with a male figure in 18th Century costume kneeling in a garden, within patterned gilt foil borders, 11.5 x 8.5 x 4.2cm.

(From a connoisseur's collection)

£50/100

127

An elaborate early 19th Century French cardboard, gilt foil and glass bonbonniere, of rectangular form raised on ball feet, the sides with glass panels with anthemion motifs within gilt foil borders, the stepped lid with multiple raised and decorated gold foil borders, the central steel carrying handle flanked by glass panels one depicting a lady butterfly hunting the other a lady beekeeper, the interior with mirror to lid, 16 x 8.5 x 10cm max.

(From a connoisseur's collection)

£150/250

128

A rare early 19th Century shagreen Palais Royal small format sewing box with gold and other fittings, the pale green rectangular shagreen box with internal mirror to lid over a flush fitted ivory velvet base with a cut glass scent bottle with gold screw cover, a pair of mother of pearl gold mounted reels, a pair of steel bladed scissors the gold arms as cornucopia with curved arms terminating in leopard's heads below ribbed oval loops, an engraved gold bodkin with earspoon, a gold quiver of arrows needle case, a gold thimble with shield cartouche and two colour gold frieze, and a mother of pearl silk winder in mirror base compartment, 13.5 x 8.5 x 2.5cm.

(From a connoisseur's collection)

£500/800

129

A miniature sewing set for a child or a doll contained in a natural walnut, gilt brass hinge mount, the interior with worn silk lid lining over a brass leaf scroll engraved mount with steel bladed gilt handled scissors, 3cm, a blue glass scent bottle with gilt hinged cover complete with internal stopper, copper gilt thimble, needle case and stiletto, tortoiseshell handled file/knife and matching glove hook, 4.5cm wide, 4.5cm high.

(From a connoisseur's collection)

£300/500

130

A fine early 19th Century French perfume set, contained in a grained tan leather square form box, the canted lid with a border of cut steel leaves, flowerheads and pins centred by a steel twin handled vase, the lid interior with mirror within fancy cord border, the lower section in velvet with matching cord borders and fitted with a central gilded funnel within four cut glass shaped bottles with silver gilt screw tops, steel push catch below a steel flowerhead, complete with silk squab, 6.5 x 6.5 x 6.5cm.

(From a connoisseur's collection)

£400/600

131

A mid 19th Century sewing companion for a child or doll, the gilded base with leaf scroll decoration on pierced gilt feet the lid in natural domed mother of pearl, the pink velvet lined base with fancy gilt thimble and steel bladed gilt handled scissors, 7 x 4.5 x 5cm.

(From a connoisseur's collection)

£100/200

132

A mid 19th Century French casket form sewing box covered in coloured and split geometric straw work, raised on bracket feet and fitted with two small drawers each with a titled colour print of cupid under glass, the lid rising to reveal a green straw interior with compartments and two small lids opening to reveal further prints and divided by a pin cushion, the interior lid with a further titled colour print under glass and below a further compartment the lid fitted with a mirror, the base with a further titled colour print, 12 x 8.5 x 11cm.

(From a connoisseur's collection)

£150/250

133

A fine Regency polychrome painted and penwork sewing box of sarcophagal form, raised on gilded brass claw and ball feet, finely decorated to the sides and lid with chinoiserie panels of figures, animals, buildings and gardens within floral and leaf scroll borders on a black background, the interior blue/green original paper with a compartmentalised tray fitted with two pin cushions, a red leather lid and matching tool card, with a selection of ivory fittings including two sets of three ivory top reel holders, three various thimbles, and an ivory flowerhead tape measure lacking tape, complete with key. 27 x 18 x 13 cm

(From a connoisseur's collection)

£400/600

134

A rare Regency Chinese export sewing box of rectangular sarcophagal form, with domed lid, raised on brass lion paw feet the short sides with lion mask ring handles, the exterior extensively decorated in mother of pearl flowers, fruit, anthemion and leaf scrolls, the lid with pagodas by a river, a mountain range beyond within a border of birds and flowers, the interior in red paper with a black lacquer compartmentalised tray with fitted pin cushion, needle book and a set of five mother of pearl top reel holders, complete with key, 24.5 x 19 x 13.5cm.

(From a connoisseur's collection)

£200/400

135

A mid 19th Century French rectangular ebonised sewing box with elaborate interior, the front with brass line inlay lacking circular escutcheon, the top with a brass inlaid tortoiseshell panel within brass lines and wrythen edge moulding, the lid interior with mirror overlaid in wool and mesh as a garden pagoda, the base in grey and red velvet with fancy silk borders with tool card and pin cushions, a mirror base compartment flanked by gilt handled elaborate lids, with a few gilt tools, 27 x 19 x 10cm.

(From a connoisseur's collection)

£100/200

136

A late 19th Century green paper covered rectangular sewing box for a child, the lid with a print of two children in Art Nouveau style border, the lid interior with mirror over a compartmentalised tray with a few accessories, reels etc., 21.5 x 14.5 x 8cm.

(From a connoisseur's collection)

£30/50

137

An unusual Victorian print and scrap decorated decoupage sewing box, of rectangular form, the lid with colour scraps of birds and other animals on a river bank within a border of cut prints forming a stage, the sides formed from various cut prints of classical figures and motifs, birds, flowers, leaves, architectural elements and other motifs carefully arranged, the interior in marbled paper, 27.5 x 19.5 x 12.5cm.

(From a connoisseur's collection)

£100/200

138

A fine late 18th Century/early 19th Century rectangular Spa Work sewing box decorated in monochrome, the lid with a panel of a castle on a cliff top with huntsman and shepherd by the river edge titled 'per Gernay Spa – Vieu du – du chateau d'imblér'. The front with a house, toll booth, a tree lined walkway titled 'La Souvenie pres de Spa', and a further description, one short side with figures on pathways by waterfalls titled 'La Cascade da Coö', the other a house, covered walkway and tree lined path titled 'La Geranstore pres de Spa', the back with buildings and figures on a tree linked walkway titled 'Le Jonnelet pres du Spa'. The lid interior with a pleated silk panel in wooden frame, over a paper lined compartmentalised base with a pen work lid titled 'La Place de Spa and la fontains du pouhon' flanked by four fitted winders each with two scenes, with a semi circular pin cushion flanked by two thimbles and a smaller pair of divided trays, with a few accessories, 26 x 18.5 x 9cm.

(From a connoisseur's collection)

£800/1200

139

A Georgian white wood polychrome floral painted rectangular sewing box, the sides painted with acorns and oak leaves below a narrow band of flowers and leaves, the lid painted with tulips and other flowers amid leaves the edges in ebony, blue paper lined interior, complete with key, 23 x 18 x 10.5cm.

(From a connoisseur's collection)

£100/200

140

A group of ten 19th Century decorative cardboard boxes, comprising a large circular box the lid colour printed with flowers within raised borders, the interior with seven compartments, 10.5cm, three small circular wafer boxes, some with contents, 3.5cm, another rectangular in tartan paper, 3.5cm, four other small circular boxes and another rectangular with glass lid with gilt foil border. (10)

(From a connoisseur's collection)

£50/100

- 141**
Three attractive 19th Century cardboard boxes, comprising a French curved front example the glass lid reverse decorated with a boy kneeling by the bank of a stream a woman at the other side, embossed paper sides, 8.5 max x 5.7cm max., an orange ground rectangular French box with pressed paper lace borders the lid with a colour print of a man in a vine yard, the lid interior with mirror over three compartment containing miniatures of bottles (one damaged), two labelled 'bouquet' the other 'Musc', 8 x 5 x 2.7cm., and a Dutch rectangular box labelled 'N.V. Goedewaagen's – Kon Holl – Pijpen-en Aardewerfabrieken – Gouda (Holland)', and containing three miniature church wardens clay pipes, 7.5 x 2.7 x 2cm. (3)
 (From a connoisseur's collection)
£60/100
- 142**
A group of nine cardboard boxes, comprising a hexagonal scrapwork printed example 'Cadbury's Cocoa is Absolutely Pure', 13cm, a fancy needle packet box, 5.5cm, a rectangular box containing oval printed silhouettes, 6.5cm, a straw work rectangular box, 5.2cm, two cylinder boxes labelled 'SM – Paris' with tied sheaf of corn, 8.5cm, and three other boxes. (9)
 (From a connoisseur's collection)
£50/100
- 143**
A Georgian green shagreen etui, of oval tapering section, reeded silver hinge mount, the interior with shell back silver spoon, steel twin prong fork, steel knife, silver knife, steel tweezers, steel and silver dividers, silver tube pencil holder, steel corkscrew, three vacant apertures, some pieces matched, 9cm.
£150/250
- 144**
An early 19th Century Palais Royal 'Souvenir' sewing box, of sarcophagal form, the box decorated with steel pins and inscribed 'Souvenir' raised on steel ball feet. The interior re-fitted with a Palais Royal mother of pearl shuttle each side with inset pansy motif, 5.5cm, a mother of pearl disc form waxer, a mother of pearl handled stiletto, a pair of steel bladed scissors with gilded fish form arms to circular serpent loops, one arm repaired, complete with sheath, 10cm, and a gold leave scroll decorated needle case, 6.7cm, replacement tray and re-lined interior, 16 x 10.5 x 7cm.
£200/400
- 145**
A mid 19th Century tortoiseshell sewing companion, of rectangular section, the red silk and velvet interior with a 'Forget Me Not' silver thimble, a silver handled stiletto, and a folding blade knife, the silk tool card/ skein holder with two attractive silver bodkins and an unusual pair of scissors the silver arms as seated dogs below bound reeded loops, 6 x 4.5 x 10.5cm.
£80/120
- 146**
A 19th Century French rectangular compartmentalised cardboard box containing eighteen glass top circular bead boxes, of variant patterns some with embossed gold foil borders, each approx., 3.5cm, the box lacking lid, 25.5 x 14cm.
 (From a connoisseur's collection)
£50/100
- 147**
A collection of twelve small cardboard, and other, boxes, including a circular example with swing handle and embossed decoration, 6.5cm, an elongated octagonal example with swing handle and floral print lid, 7.5cm, another square with watercolour lid of two children and silk ribbon borders, 6.5cm, and nine others various. (12)
 (From a connoisseur's collection)
£40/60
- 148**
A rare cardboard sewing companion by Reynolds and Co. in the form of Cleopatras needle, the obolisque concealing a reel rod with four reels and four falling needle packet boards over a further box to the plinth containing a set of four labelled reels for 'Charles Reynolds and Co.', the base with a printed label 'Cleopatras Needle Ladies' Work Companion Registered V1145, C.R. and Co., London', 30cm high, 13cm square at base.
 ± The original obelisk was a gift from Muhammad Ali Pasha to Britain in 1819 but it was not erected on the Victoria Embankment until 1878.
£100/200
- 149**
Three boxes, comprising a green cardboard cylinder box the lid with an advert for 'Au Bon Marché Maison A. Boucicaud', 17.5cm dia., 20cm high, a rectangular cardboard box containing some reels, the lid with colour print, 24.5 x 17cm, and a bentwood oval shaker style box with internal Paris label, 25.5cm. (3)
 (From a connoisseur's collection)
£40/60
- 150**
An Antwerp ebonised table cabinet circa 1650 embellished with needlework panels, the exterior plain with brass side carrying handles and raised on pear shaped ivory feet, the front enclosed by a pair of doors with gilded cartouche escutcheon complete with key. The interior of the doors with a pair of silk needlework panels of vases of flowers revealing an arrangement of six drawers disguised as eight the centre drawer fitted with a mirror, the other seven each with a raised needlework panel including phoenix, peacock, two dolphins, a lamb and two others, the drawers uniformly lined in red silk, 36 x 20 x 32cm.
 ±This cabinet can be confidently attributed to Antwerp and the first half of the 17th Century. Three similar cabinets are discussed in an article by Vibeke Woldbye -Sharloth's Cabinet ,Furniture History Society Journal XX1 (1985). Of the three cabinets discussed in this article one is in The Museum Of Decorative Arts ,Copenhagen, one in The Musees Royaux d'Art et d'Histoire, Brussels and the third sold Sotheby's May 1984
 (From a connoisseur's collection)
£2000/3,000
- 151**
A 19th Century enamel sewing etui of tapering oval form, the pink ground overlaid in white with leaf sprays and with white ground panels of bouquets of flowers, the top with a further flower spray, gilded metal mounts, the interior with steel scissors, bodkin, gilded stiletto, gilded button hook, needle case and a file, all apparently original, 9.5cm high, 4.5cm max. width.
£300/400
- 152**
A Tartan ware (M'Lean) cylinder form sewing companion, the interior with needle drawer thimble stand, silver thimble, steel bodkin, steel scissors, steel needle case, mother of pearl handled stiletto and matching crochet hook, one space vacant, the case with a few scratches and blemishes, 9cm high, 4.2cm dia.
£40/60
- 153**
A woven cane sewing companion, of curved rectangular form with green silk bindings and silk ropework carrying handle, internal printed label for 'Alberto Martorell, Barcelona' and ink inscription for 1871, catch inoperative due to shrinkage, 14.5 x 7.9cm.
£40/60
- 154**
A mid 19th Century French rectangular box, the front inlaid with musical trophies, the lid with scythe, hat, flask and sheaf, the sides with floral panels all within cross grained borders, internal lid mirror cracked, blue silk lining, 21 x 13.5 x 8.5cm.
£40/80

155

A late 19th Century French rectangular sewing box, the ebonised ground with brass line inlay the lid with brass cartouche, the lid interior with mirror in fancy ribbon frame over a lidded and compartmentalised interior with a pair of French porcelain gilt decorated scent bottles, and a tool card with gilt metal needle case, thimble, stiletto, scissors and bodkin, 22 x 15 x 9cm.

£80/120

156

A mid 19th Century French sewing box, of rectangular form the ebony ground inlaid to the front with a spray of flowers in brass and mother of pearl, the undulating lid with similar central inlay and spandrels. The lid interior in red silk over a flush fitted tray with four mother of pearl snowflake winders in circular mirror base compartments, a pair of silver handled scissors, s.d., a similar stiletto, a thimble, a replacement folding knife and a glass scent bottle, complete with key, 22 x 15 x 10cm max.

£60/100

157

A late 19th Century sewing set, contained in a black leather and gold lined shaped case, blue silk lid lining, the base section flush fitted in blue velvet with six mother of pearl handled tools, silver thimble, bodkin, folding knife with mother of pearl scales and two pairs of steel scissors, the larger pair matched, case 18.5 x 13.5cm.

£40/60

158

A good early 19th Century Anglo-Indian Vizagapatam ivory veneered sewing box of sarophagal form, the angled sides with two bands of leaf scrolls highlighted in black, the lid with a confirming border below a raised panel of reeded ivory centred by a tablet, the lid interior in sandal wood with an ivory oval initialled 'JHC' with a hinged panel revealing a mirror. The tray with ivory edged divisions, double thimble holder, fitted pin cushion and two engraved border ivory lids, original ivory thimble and tape measure, one handle to tray replaced, on ball form ivory feet, 21.5 x 16 x 13.5cm.

£300/500

159

A 19th Century Chinese sandalwood rectangular box, carved to all surfaces with figures, pagodas, trees, s.d., 24.5 x 10 x 7.5cm.

£30/50

160

A 19th Century basket formed from an armadillo, handle with Sellotape repairs, 28cm.

£30/50

161

A Dutch colonial ebony and white metal mounted Bible box, Ceylon, late 18th/early 19th Century, the sloping lid with flowerhead mounts and pierced leaf scroll spandrels, the front and two sides undulating with conforming mounts and escutcheon to the front, the back in the form of a book spine, male part of lock lacking. 22 x 15.5 x 8 cm max.

£200/400

162

A late 19th Century oval ivory cased etui, flush fitted with an engraved silver gilt needle case, dented, a pair of steel bladed scissors with silver gilt scroll handles and oval loops, one arm repaired, a matched silver thimble, a silver gilt handled steel stiletto, and a twin blade folding knife with silver gilt scales, bodkin lacking, case 11.5cm.

£50/100

163

An early 19th Century French etui with gold fittings, the ebony case of oval section and tapering form with a gold cartouche initialled 'SF', the 18k fittings comprising a reeded oval section needle case, dents and repairs to lower section, a thimble with leaf engraved border, a bodkin, a pair of steel bladed scissors with reeded gold arms and scroll arms to oval loops, a steel stiletto with gold handle and a pencil, case 11.5 cm

£300/500

164

A mid 19th Century French ebony etui of oval section and tapering form inlaid with leaf scrolls in coloured metals, with an engraved mother of pearl needlecase, a matching stiletto damaged at joint, a matched thimble and scissors, the interior lid lining with a printed Moscow retailers label, case 12 cm

£50/100

165

An early 20th Century French etui, the tooled leather case of oval section and tapering form and internally inscribed 'Flinois and Round Bijouterie Amiens', the fancy silver needle tools comprising needle case, stiletto, thimble and scissors together with a blued steel bodkin, case 14 cm

£50/100

166

An exceptional Chinese export ivory sewing box, circa. 1820, of rectangular form each surface deeply carved with figures, pagodas, trees, horses and boats within leaf scroll borders and bamboo edges, the interior with a lidded and compartmentalised tray with the original carved ivory fittings comprising thimble, tape measure, six cotton barrels two lacking stems and fretwork holders, three clamps, a fixed reel, bodkins, netting tools, shuttle and a pair of circular bead boxes, complete with original key, 31.5 x 21 x 11 cm

£2000/3000

167 – 169

No Lots

Needleworks and Costume

170

Twelve baby bonnets, and a late Victorian bonnet including Honiton, Limerick, Ayrshire, Torchon examples. (13)

£30/50

171

A mixed lot white wares, including a French sun bonnet, Victorian bib, petticoat, various under garments, baby clothes, etc. (qty)

£40/60

172

A rare 18th Century documentary pocket book with fine needlework binding, depicting on a silver thread ground two stags, birds and other animals within trees and flowers within wire bound edges, the interior in blue silk the book of eight pages inscribed in ink to the first 'Lucy Graham's Pocket Book' and in pencil 'M 28th Oct 1741 – D 18th June 1788' the next three pages titled in ink 'The Dutchers – The Duke – Lorel Graham', the front with a silk pocket, fittings for a stylus, 11 x 8cm.

±. With a typed note relating to William 2nd Duke of Montrose M 28 Oct 1742 Lucy dau. Of John 2nd Duke of Rutland ...

(From a connoisseur's collection)

£300/500

173

A pair of late 19th Century/early 20th Century Chinese red silk draw string purses, each embroidered in coloured and metal threads with flowers, fruit and leaves, the drawstring cords each with coloured tassels, the purses excluding hanging cords, 7.5cm. (2)
(From a connoisseur's collection)

£80/120

174

Two pairs of 19th Century silk and floral embroidered baby shoes, each pair with leather soles and approx. 11cm. (4)
(From a connoisseur's collection)

£40/80

175

A charming and naïve cotton drawstring bag 'Helen Smith – Work – Aged 9 – 1816', each side embroidered in silks and wool with birds amid flowering branches, some minor loss, 32 x 29.5cm.
(From a connoisseur's collection)

£50/100

176

Two late 18th Century/early 19th Century knitted metal thread drawstring bags, one in fine gold thread with purple cord to top and base, 18 x 10cm, the other in heavy gold thread, the drawstrings with coiled metal tassels with gold sequins and matching base tassel, 12 x 8cm, excluding drawstrings. (2)
(From a connoisseur's collection)

£60/100

177

A small pair of 17th Century/18th Century beadwork panels, each of a single flower within a geometric border within borders of silver lace and elaborate silver wire tassels some within silver crosses and other motifs, some minor losses to joint of beadwork, 25 x 6.5cm.
(From a connoisseur's collection)

£50/100

178

A mixed lot of costume and needlework, comprising an alphabetical sampler over numerals and five variant coronets and dated 1860, shaped border, hole to centre, 24.5cm x 25cm, a red velvet and gold thread embroidered panel possibly a bracelet, 16.5cm, a black velvet baby cap decorated in gold thread, sequins and jewels, 11cm, two pairs of knitted sleeves one pair with thumb hole, a silk flowerhead, and a cream silk miniature shoe, possibly a pin dish, heel lacking, 16cm. (9)
(From a connoisseur's collection)

£50/100

179

A silk green and white rosette reticule, decorated in beadwork and dated 'June 1808' on ribbon handle, 15 x 10cm excluding handle.
(From a connoisseur's collection)

£40/60

180

Five 19th Century needlework exercises, comprising a small floral tapestry bag inscribed 'Isabel', 16.5 x 12.5cm, a Bristol Card square form letter case edged in pink ribbon inscribed 'ER 1876', 20.5cm, a floral tapestry skein and needle wallet edged in blue ribbon, 15 x 8cm, a needle flannel book with pin stuck edges, 8cm, and a needle flannel in floral tapestry with cut steel button, 6.5cm x 20.5cm. (5)

£50/100

181

Three Victorian christening gowns, all with layered and open work fronts, approx., 95cm, a table shawl, and two parasols, sd. (6)

£30/50

182

Two early 19th Century painted velvet panels, two letter cases and another piece, the velvet panels painted in polychrome with flowers and edged in yellow, 45 x 15cm, a cardboard envelope form letter case with printed vignettes, brown ribbon and gold foil edges, 23 x 15cm, a card and pink ribbon letter case, 17cm sq., and a rectangular petit point panel, 14 x 8.5cm. (5)
(From a connoisseur's collection)

£40/60

183

An early 20th Century beadwork bag, of rectangular form decorated with purple trailing flowers on a gold ground, tasselled and lattice base, ropework decorated brass mount on chain suspension, 22 x 14cm excluding chain.

£40/80

184

Five continental painted and embroidered needlework and painted figural appliques, 17/18th Century, comprising four bearded male figures and a further figure tied to a tree and pierced by arrows, some losses, each approx.. 16.5cm high. (5)

£80/120

185

Two 19th Century floral woolwork bell pulls, one on a gold ground, the other a brown ground, last with some moth nips, 135 and 162cm. (2)

£30/50

186 – 188

No Lots

Samplers

189

An unusual early 19th Century sampler on linen, with numerous figures including an officer with plumed shako, a lady with crown and sceptre, flowering jardineres and other motifs, 40.5 x 40cm in a glazed plain frame.

(From a connoisseur's collection)

£100/200

190

A sampler dated 1823, 'Mary Bayley Her Work in the Year 1823', with flowering jardinières, birds, angels, a house, baskets of flowers arranged around a verse 'Friendship', within a trailing strawberry border, wear, stains, repairs, 38.5 x 28.5 cm in a glazed gilt frame.

£40/60

191

A finely worked sampler 'Charlotte Andrews', December 7th AD 1801', worked in black with a verse titled 'On Emulation' within a coloured flowerhead border, a few holes, losses to corners, in a gilt frame under glass, 31.5 x 22cm.

£80/120

192

A fine and bright silk embroidered sampler 'Louisa Farndell Finish'd this Work March 17th 1827 Aged 13 years', with a verse within a floral border over a basket of flowers, trees, flowers, birds and other motifs within a leaf and flower border, two small moth nips, in a mahogany frame under glass, 43 x 34.5cm.

£600/800

193

A good sampler 'Eliza Street, Medmenham, Finished 1847', with two verses in black below an alphabet, the field with numerous crowns, flowering jardineres, birds, a negro and other figures, lions, squirrels, etc., in a stained pine frame under glass, 33 x 32cm.

£200/400

194

A rare 18th Century Norwich School sampler 'Hannah Callow, Aged 11 years 1771', worked with alphabet and verse over a basket of flowers above a hill with sheep, the bottom corners with cornucopia issuing a border of colourful silk flowers, slight loss to top edge, in a moulded frame under glass, 43 x 36cm.

£300/500

195

A miniature sampler, worked in red with a lower case alphabet and inscribed 'Bessie', 3.2 x 3.5cm.

£100/200

196

A rare late 18th Century whitework circular watch case sampler, stitched onto a pink paper square finely worked with a flowering jardiniere flanked by two birds within a geometric border, 5.7cm dia.

£150/250

197

A rare late 18th Century circular watch case sampler, inscribed, initialled and dated 'Love the Giver SS 1792' within a geometric border overlaid with sequins, 5.5cm dia.

£150/250

198

A miniature sampler and two mourning brooches, the sampler worked in red and inscribed 'Remember me when faraway Dear Sister', 6 x 9cm, one brooch inscribed 'In Memory My Dear Sister', 4cm, the other 'Memory My Dear Mother', 3.8cm. (3)

£50/100

199

Three Bristol card sampler style exercises, each with a verse, one dated 1890, another 1892, largest 14.5 x 7.2cm. (3)

£20/30

200

A fine orphanage style miniature 'riddle' sampler, early 19th Century, worked with two rows of upper case letters over 'By adding one vowel the above makes two lines in verse (Preserve Ye Perfect Men Ever Keep These Precepts Ten) over the script 'Found written over the Altar Piece of a Church in Wales Were it Remained near a Century before the meaning was discovered' over a further verse, within a 'S' scroll border the whole worked in black and red, 11cm sq. † Highways and Byways in Sussex quotes this inscription as existing on a carved oak screen in Hangleton House, Hangleton. Page 196

£400/600

201

A mid 19th Century sampler, possibly Quaker, simply worked with two upper and lower case alphabets over numerals and inscribed 'Aged 10 years – No Pains No Gains', 14.5 x 29cm.

£40/80

202

An attractive small sampler 'Mary Wereat Her Work October 8 – 1783', worked with three flowering plants above a short verse over a panel of two trees, birds and crowns within a geometric border, three small patches of moth, 21 x 16cm in a moulded black and gilt frame under glass.

£80/120

203

A sampler by 'Mary Heafield 1807', worked with alphabets and crowns over birds, flowers, trees and butterflies enclosing a verse, moth nips and time stained, in a rosewood frame under glass, 45.5 x 30cm.

£50/100

204

A sampler 'Sarah Jackson her sampler x Wrought In The Year of Our Lord 1812', with a list of ten family members born between 1799-1811 between trees and birds, over a panel of birds, crowns, angels, trees, black boys, and a house initialled and dated 'SJ 1812' flanked by figures, animals, and a dovecote over a row of triangles incorporating motifs, the sides and top with a trailing strawberry border, moth nips, in a maple frame under glass, 39 x 31cm, together with a small framed geometric tapestry panel, 13 x 12cm. (2)

£100/200

205

An attractive small sampler 'Sarah Greves, February 7 1811', worked with a verse over a dog, sheep, flowering jardiniere, trees, birds and crowns within a trailing strawberry border in a grained frame under glass, 26.5 x 17.5cm.

£200/300

206

A mid 19th Century sampler 'Harriot Mason', simply worked with rows of an alphabet and numerals within a cut work and stitched triangular border, in a plain black frame under glass, 23.5 x 22cm.

£40/60

207 – 209

No Lots

Chatelaines

210

An impressive American silver chatelaine, the reverse of the clip stamped 'Black Starr and Frost, New York, Sterling' the clip mount formed from interlaced letters 'LWJC' with five chains to a triangular leaf scroll decorated scissor sheath with replacement scissors, an egg form hinged lid box containing pin cushion, a pin wheel, a thimble box with thimble and a scent flask with variant monogram to one side, 33cm.

£150/250

211

Two late 19th Century chatelaines, in plated metal comprising an example with pierced coin, shell and figural mount with three linked pierced panel chains to a circular tape measure, thimble bucket, and swivel notelet, 28cm, the other with a triangular clip mount with lion and three ancient head panels with five pierced panel chains to a mother of pearl disc form pin cushion, cylinder needle case, scissor sheath, thimble bucket and circular tape measure with replacement tape, 26cm. (2)

£80/120

212

A late Victorian polished brass chatelaine, the pierced and cast clip mount with five pierced panel chains to a scissor sheath, a retractable pencil, a swivel notelet, a thimble bucket with thimble and a pin disc, all with floral decoration, 31cm max.

£50/100

213

A mid 19th Century steel chatelaine, the shaped and pierced curved clip mount with seven various chains two subsequently dividing into four further chains from elaborate beaded mounts, the fittings comprising steel safety scissors, ribbon threader, corkscrew, stiletto, tweezers, pencil, pin disc, button hook, sealing wax holder, swivel notelet, ball form tape measure with original printed tape and a thimble bucket, two rotating beads lacking to one mount, centre chain apparently reduced, 40cm.

£100/200

214 – 216

No Lots

Reels and Thread Winders

217

A set of four 19th Century ivory reel holders, the decorated tops with ball form borders, 3cm dia., 3.5cm high. (4)

£40/80

218

A rare set of four labelled bone reels with thread, each with a crimson and gilt Royal Coat of Arms label 'The Queens Royal Sewing Thread – Clarkson – Leicester – 9', two with further foiled labels of the Royal Coat of Arms and two with foiled labels of a shield of arms, within carved borders, 3cm dia., 2.7cm high. (4)
(From a connoisseur's collection)

£60/100

219

Five brass mounted wooden reels, comprising an example for 'Pittman's Six Cord/Pittman's Egyptian Twist', 2.7cm, and four smaller examples all featuring the Royal Coat of Arms, three for 'Clarkson's' and another 'Royal Thread', various sizes. (5)
(From a connoisseur's collection)

£50/100

220

A set of four mother of pearl multiple thread winders, each of shaped rectangular form, 5 x 3.5cm. (4)
(From a connoisseur's collection)

£40/80

221

Five mother of pearl thread winders, comprising a set of three of inward curving rectangular form, one chipped to one corner, 5 x 3.2cm, and two others. (5)
(From a connoisseur's collection)

£40/80

222

Seven thread winders, comprising six in mother of pearl, five of snowflake form and one of cross form, and a red stained bone example, largest 3cm. (7)
(From a connoisseur's collection)

£40/80

223

Thirteen thread winders, comprising a pair of French cardboard print decorated examples 'Fil Geographique', 7cm, nine 19th Century bone and ivory examples and two wooden, largest 5cm. (13)
(From a connoisseur's collection)

£40/80

224

Six reel holders, all with bone bases, brass stems and mother of pearl tops comprising two sets each of three, and a further top and base. (8)

(From a connoisseur's collection)

£50/100

225

Seven mother of pearl thread winders, all of snowflake form comprising three Chinese floral and figural engraved examples, largest 5cm, and four smaller examples. (7)

£50/100

226

Eight thread winders, comprising a set of four in mother of pearl of rectangular inward curving form, 6.5 x 4cm, a similar smaller set of three, and a rosewood example, 4.2cm. (8)

£50/100

227

Two unusual reels, comprising a fixed reel in polished agate with star cut ends, 3.5cm, and a mother of pearl top reel holder delicately engraved with a circlet of acorns and leaves, 3.5cm.

£30/50

228

Four mother of pearl top reel holders, a waxer and emery, comprising a set of three reel holders, 3.5cm high, another, and a matching mother of pearl pierced top waxer and emery. (6)

£50/100

229 – 231

No Lots

Shuttles

232

An early 19th Century Chinese export mother of pearl shuttle, one side with vacant circular cartouche within flower sprays, the other a single flower, both within floral edge borders, 10.2cm.
(From a connoisseur's collection)

£50/100

233

Two tortoiseshell shuttles, the larger example inlaid to one side in the shibayama style with thirteen leaves and flowers in mother of pearl united by scrolling carved branches, 12.2cm, and a plain tortoiseshell shuttle, 8.2cm. (2)

£80/120

234

An attractive mid 19th Century Japanese ivory and lacquer shuttle, one side with a full length flowering branch in gold, black and red, the other of conforming colouring but of a variant flowering branch, signature to post, 6.5cm.

£100/200

235

An early 19th Century French prisoner of war work bone shuttle, pierced with ovals and dots, brass pinned post, 7.2cm.

£30/50

236

Three 19th Century Chinese ivory and bone shuttles, the largest carved with figures, trees and pagodas, 8.2cm, another carved with buildings and trees, 6.5cm, and a plain example, 5.7cm. (3)

£50/100

237

Five various shuttles, comprising a scroll decorated silver plated example, plating worn, 7.7cm, a mother of pearl example, 6.2cm, an ivory example, 5.2cm, and two tortoiseshell examples, both chipped. (5)

£40/60

238 – 240

No Lots

Knitting, Crochet, Netting and Tambouring

Knitting Pin Gauges and Related Items from the collection of Sheila Williams, author of *The History of Knitting Gauges*

241

A rare knitting pin gauge 'The Fairfax', with original printed packet, the brass heart shaped gauge stamped around the eye 'The Fairfax' and below 'Knitting Pin and Wire Gauge' 7.2cm the packet 6 x 7cm.
± This gauge was made for a London haberdasher Robert Thomas Hogg, it was registered on 19th June 1896 and took its name from that of his Hampstead home Fairfax Avenue. Illustrated and discussed – *The History of Knitting Pin Gauges* pages 44 and 45.
(From the collection of Sheila Williams)

£50/100

242

Four bell form knitting pin gauges, all in white metal comprising, 'The Sabre', 'The Peacock', 'The Clock', and a 'Ringing Bell', all approx..7cm. (4) 'The Peacock' was produced by William Woodfield and was made for Faudels, 'The Clock' and 'Sabre' were also produced by Woodfield. Illustrated and discussed – *The History of Knitting Pin Gauges* pages 44 and 45. The Ringing Bell was made by Jager and was probably commissioned by Bellmans yarn shop.

Illustrated and discussed – *The History of Knitting Pin Gauges* pages 50 and 51.

(From the collection of Sheila Williams)

£40/80

243

A rare knitting pin gauge by The Crescent Manufacturing Company, the circular nickel plated gauge in the form of a crescent enclosing a star 6cm dia.

Illustrated and discussed – *The History of Knitting Pin Gauges* pages 50 and 51.

(From the collection of Sheila Williams)

£50/100

244

Five knitting pin gauges, comprising a brass rectangular example of slot form by Crescent with trade mark and No. 517815, 10.5cm, two bell shaped gauges for Alfred Shrimpton and Sons, one plated and one in anodised aluminium with tension slot, 7cm, another bell shaped plated example with 'one inch' slot, 7cm, and a rectangular plated example, unmarked with rule to top edge, 6.7cm. (5)

Illustrated and discussed – *The History of Knitting Pin Gauges* pages 39 and 40, 43, 58 and 57.

(From the collection of Sheila Williams)

£40/80

245

A rare brass bell form knitting pin gauge, for 'W. Boulton and Sons, Redditch', 7cm.

(From the collection of Sheila Williams)

£40/80

246

Four bell shaped nickel plated knitting pin gauges, comprising 'Bell Gauge', Faudel Phillips and Sons with peacock trade mark, 7cm, 'Vicars Knitting Pin Gauge', 7cm, 'Woodfields, Redditch Knitting Pin Gauge' with cross trade mark, 7cm, and 'Made In England' with Jager trade mark, 7cm. (4)

Illustrated and discussed – *The History of Knitting Pin Gauges* pages 48 and 49, 50, 51.

(From the collection of Sheila Williams)

£40/80

247

Three bell shaped knitting pin gauges and a triangular example, comprising a brass example 'G. Chambers and Co., Bell Gauge Patented 17th Sept. 1841', with Royal Coat of Arms, 7cm, a nickel plated example 'Mlle. Riego's Bell Gauge Manufactured Solely by G. Chambers and Co. Priory Needle Mills Studley Warwickshire Patented 17th Sept. 1847', 7cm, another 'H. Millward and Sons, Washford Mills, Redditch' with arm and sword trade mark, 7cm, and a triangular nickel plated example 'Embassy, Knitting Pin Gauge/Standard Wire Gauge, Made in England', 6cm. (4)

Illustrated and discussed – *The History of Knitting Pin Gauges* pages 34, 17, 18, Col. Plate 3 and page 65.

(From the collection of Sheila Williams)

£50/100

248

A rare brass circular knitting pin gauge 'W. Hall and Cos., Knitting Pin and Crochet Hook Gauge', with elephant trade mark, 5.2cm dia. Illustrated and discussed – *The History of Knitting Pin Gauges* pages 36 and 37.

(From the collection of Sheila Williams)

£50/100

249

Three bell shaped knitting pin gauges, comprising a brass example 'H. Walker, London, Bell Gauge, Patented Wire Gauge Sizes', with Royal Coat of Arms, 7cm, and two nickel plated examples 'W. Hall and Co. Ltd. Metal Gauge' with elephant trade mark, 7cm, and 'H. Walker, London, Bell Gauge' with anchor trade mark, 7cm. (3)

Illustrated and discussed – *The History of Knitting Pin Gauges* pages 36 and 37, 34, 31.

(From the collection of Sheila Williams)

£40/60

250

A rare nickel plated bell shaped knitting pin gauge, 'Abel Morrall's Metal Gauge', griffin trade mark, 7cm.

Illustrated and discussed – *The History of Knitting Pin Gauges* page 24 – note the aberrant spelling of 'gauge'.

(From the collection of Sheila Williams)

£30/50

251

Four Abel Morrall's knitting pin gauges and a pouch, comprising a brass bell form example, 7cm, another in nickel plate, 7cm, an Abel Morrall's 'Clive' knitting pin gauge in Erinoid, 7.5cm, an 'Abel Morrall's Aero Knitting Pin and Tension Gauge' with Lewis and Baylis Cross Fox trade mark, in anodised aluminium, 7cm, and a rare green leather pouch for a bell form knitting pin gauge tooled in gilt with trailing leaves. (5) Illustrated and discussed – *The History of Knitting Pin Gauges* pages 24 and 28.

(From the collection of Sheila Williams)

£50/100

252

A rare mid Victorian knitting pin gauge 'The Cornucopia Gauge', over Curling Hope's monogram in shield, polished zinc, 6cm.

Illustrated and discussed – *The History of Knitting Pin Gauges* pages 15 and 16.

(From the collection of Sheila Williams)

£50/100

253

Three unusual knitting pin gauges, comprising 'The Diamond Gauge', 10.2cm with original printed card wallet form case, 12 x 6.5cm, a Stratnoid 'propeller', 11cm, and Stratnoid knitting pin gauge of slot form, anodised aluminium, 11.5cm. (3)

Illustrated and discussed – *The History of Knitting Pin Gauges* pages 46, 52, 53 and 54.

(From the collection of Sheila Williams)

£50/100

254

Nine 20th Century knitting pin gauges, comprising four colour anodised bell form examples for 'Emu', five various 'Wimberdar' including the 'Coronet Pin and Hook Gauge', by Wimberdar probably for a yarn retailer, 5.2cm dia. (9)

Illustrated and discussed – *The History of Knitting Pin Gauges* pages 55-56.

(From the collection of Sheila Williams)

£30/50

255

Ten 20th Century knitting pin gauges, all of beehive form comprising a nickel plated example 'Beehive Needle Gauge for Patons and Baldwins Wools – Britain's Best', beehive trade mark, 6cm, another in aluminium 'Gauge for knitting pins, Patons and Baldwins Ltd.... Alloa-Halifax-London', 6.2cm, and eight plastic and similar examples including a Horner made white Casein example circa. 1934, 5cm, the smallest 4.7cm. (10)

Illustrated and discussed – *The History of Knitting Pin Gauges* pages 63 and 64 – some illustrated col. Plate 3

(From the collection of Sheila Williams)

£30/50

- 256**
A collection of Australian knitting pin gauges, comprising seven Casein/plastic 'Paton' beehives, various colours, a small triangular example, 3.6cm, a rectangular example, three 'Rainsford' metal bell gauges, 7cm, two circular metal 'Keepair' gauges, 6cm, and two ruler gauges one incorporating counter, 15.7cm. (16)
 Illustrated and discussed – *The History of Knitting Pin Gauges* pages 59 – 61 and some illustrations col. Plate 2.
 (From the collection of Sheila Williams)
£40/80
- 257**
A comprehensive collection of 20th Century measures, rulers, registers and free gifts, comprising a Bookmarker Knitters' Help', 14cm, excluding tassel, various ruler form examples, including two three-part hinged examples, a rare souvenir metal example with crest for 'Leysdown on Sea', 15.5cm, four card registers including a scarce 'At-A-Glance' example, 10cm, a give-away 'Woman's World' bell form green painted steel example, 7cm. and others. (24)
 Illustrated and discussed – *The History of Knitting Pin Gauges* pages 67 – 72 and some illustrations Col. Plate 2 and page 76.
 (From the collection of Sheila Williams)
£40/60
- 258**
Four American gauges, comprising three metal and card 'Susan Bates' rule/gauges, largest 16cm, and a 'Boye' circular rotating card knitting pin and stitch gauge, 13.5cm. (4)
 Illustrated and discussed – *The History of Knitting Pin Gauges* pages 69 – 72.
 (From the collection of Sheila Williams)
£30/50
- 259**
A collection of contemporary knitting pin gauges, in various forms and materials, some in original packaging. (22)
 (From the collection of Sheila Williams)
£20/40
- 260**
Gaugain (Mrs) – The Knitters Friend, published by J. Gaugain, 1846, green cloth worn at spine, and Gaugain (Mrs) The Accompaniment published 1844 by I.J. Gaugain, worn red cloth, both titled in gilt, 10 x 16.5cm. (2)
 (From the collection of Sheila Williams)
£40/80
- 261**
Four 19th Century knitting booklets, in fancy soft covers comprising Baynes (C.J.) – The Knitted Lace Collar Receipt Book, Second Series, 24pp, 1846, Columbian Press, 12 x 9.7cm / Branchardiere (Mdlle.R' De La) - The Winter Book, 52pp and adverts, 11 x 15cm / Mee (C) – The Alliance Knitting, Netting and Crochet book, 32pp, 1856, 12 x 15.4cm / Hope (Mrs) – The Knitter's Friend, 95pp, 5th edition, n.d., including advert within text for 'The Cornucopia Gauge' and tipped in printed note concerning availability, 12.7 x 10.5cm. (4)
 (From the collection of Sheila Williams)
£40/80
- 262**
Three 19th Century knitting booklets, in fancy soft covers comprising – A Parisian Lady – The Ladies' Cabinet, n.d., 21pp, with two references to The Royal Star Gauge, 12 x 10cm / Curling Hope (G) – The Ramsgate Book of Knitted Lace Edgings, 28pp, circa 1847, with text advert for G.C. Hope's Cornucopia Gauge, 13.5 x 10.6cm / Mission to Deep Sea Fishermen – Directions for Knitting, n.d., 13.4 x 10.5cm. (3)
 (From the collection of Sheila Williams)
£40/80
- 263**
Four 19th Century knitting books, comprising Watts (Miss) – The Ladies' Knitting and Netting Book, First series, 5th Edition, 1840, 129pp, 16.5 x 10.5cm / Mee (Cornelia) – Exercises in Knitting, 1846, 124pp, fancy red cloth, 12 x 15cm / Lambert (Miss) – My Knitting Book (Second Series), 1846, 123pp, fancy green cloth, 15 x 12cm / E.M.C. (Elvina M. Corbould), 1876, 63pp, worn brown cloth, 14 x 11.5cm. (4)
 (From the collection of Sheila Williams)
£50/100
- 264**
Two 19th Century Knitting Books, comprising The Ladies' Own Book – no author, published by W.S. Johnson, 60 St Martin's Lane, folded patterns printed on colour paper, fancy blue cloth, circa 1890, 12.5 x 19cm, and Gaugain (Mrs) – The Lady's Assistant, 4th Edition, 1841, fancy green cloth spine re-backed, 11 x 17cm. (2)
 (From the collection of Sheila Williams)
£40/80
- 265**
Three books on knitting and needlework, comprising Mee (Cornelia) – A Manual of Knitting, Netting, and Crochet Work, 267pp, 1843, fancy blue cloth, 13 x 16cm / Lambert (Miss) – The Hand-Book of Needlework, 400pp, 2nd Edition, 1843, blue cloth gilt, illustrating page 295 'F. Lambert – The Standard Filiere', 21 x 13cm / Dillmont (Th. De) 813pp plus adverts, worn cloth split, 14 x 10.5cm. (3)
 (From the collection of Sheila Williams)
£50/100
- 266**
A collection of eighteen cylinder form knitting needle containers, in metal, wood, and plastics, including an umbrella form example, largest 35cm.
 (From the collection of Sheila Williams)
£40/80
- 267**
Five 'Viyella – Needle Gauge/Knitting Recorder' of drum form, comprising four colour variants of the children with wool format and one with gilt lettering on black only, 4cm dia. (5)
 (From the collection of Sheila Williams)
£40/80
- 268**
An attractive turned and stained boxwood wool ball or string box holder, turned pedestal on circular base, bone aperture and finial, 10cm high.
 (From the collection of Sheila Williams)
£30/50
- 269**
Eight Bakelite wool ball holders, comprising six variant coloured 'NB Ware' examples each with gauge to base, 11cm dia., an acorn form example 'U-Plas' with gauge to base, 9cm dia., and another 'Bex' with floral cover, gauge to base, 9.5cm dia. (8)
 (From the collection of Sheila Williams)
£30/50
- 270**
Knitting needle boxes, balls, winders and a counter, comprising three 'Bex' variant coloured Bakelite boxes incorporating gauges to the lids, 31cm, two similar smaller examples also by 'Bex', three brown Bakelite wool ball holders, one sd., 9.5cm dia., an 'MP Handy Guide' metal frame register, 11.5cm, two boxed metal 'Aero' wool winders, and 'The St George Wool Holder – A Boon to Knitters' in original box, 10.5cm. (12)
 (From the collection of Sheila Williams)
£40/80
- 271**
An attractive late 18th Century fruit wood winder, for wrapping yarn, the 'T' shaped base with one turned and one silhouette support to a curved x frame winder with turned handle, some old worm, 41cm wide, 60cm high.
 (From the collection of Sheila Williams)
£80/120

272

A mid 19th Century standing swift or wool winder, the circular base to a turned stem with wool ball cup terminal, the stem with two adjustable reels, 30cm dia., 117.5cm high.

A similar example illustrated Pinto (E.H.) – Treen, plate 343.

(From the collection of Sheila Williams)

£60/100

273

A 19th Century turned ebonised beech swift or wool winder, the turned base and pedestal supporting four slot in arms below a wool ball cup, 30cm high.

A similar example illustrated Pinto (E.H.) – Treen, plate 338.

(From the collection of Sheila Williams)

£40/60

274

Three wool winders or swifts, comprising an oak scissor arm example on metal clamp base, 62cm high, a home made example with hooked arms, 61cm, and a scissor arm example on chromed base, 23cm. (3)

(From the collection of Sheila Williams)

£40/60

275

A fine early 19th Century ivory and gilt dot tambour hook, in three sections with gilt mounts and steel turn key, complete with steel hook, 11.5cm.

(From a connoisseur's collection)

£50/100

276

An unusual mid 19th Century crochet set, contained in a black painted brass case the lid inset with a natural shell, the interior in blue velvet and fitted with six steel crochet hooks and a baluster steel handle.

(From a connoisseur's collection)

£100/200

277

A 19th Century tortoiseshell lucet, 9.8cm.

£30/50

278

A wool basket and a wool bowl, the basket of six curved top panels each embroidered with a bird below a blue silk handle with pink ribbon bows, 8cm, the wooden bowl probably Spa work and of oval form internally painted with fruit, 13cm. (2)

(From a connoisseur's collection)

£40/80

279

An early 19th Century Dutch knitting stick, of tapering cylinder form decorated in quill work bound in brass wire, scalloped silver top rim and base mount, 17cm.

£60/100

280

A Mauchline ware crochet cylinder, (Queen's College, High St., Oxford/University College Oxford) the interior with bone handled metal chuck and five of six steel hooks, 10cm.

£30/50

281

Two pairs of knitting needle protectors, comprising a bone pair in the form of postillion riders boots complete with cord, each 4cm, and a pair made from alpine chamois horns, complete with elastic, each 4.5cm. (2)

£40/80

282

A pair of continental silver knitting needle protectors, of elaborate form engraved and decorated with large leaves and terminating in acorn finials, complete with three needles, 22cm overall. (5)

£40/80

283

A scarce 19th Century ivory circular knitting needle gauge, inscribed to 24 and stamped to reverse 'W Boulton And Son, Redditch', 4.2cm.

± Boulton and Sons were Redditch needle manufacturers and exhibited at the Great Exhibition. See also lot 245

£100/200

284

Seven tambour and crochet hooks, comprising a 19th Century ivory three section example with steel collar and turnbuckle, 12cm, two others both lacking end covers, a tambour hook with engraved gold handle, small dent, an unusual silver filigree crochet hook, a fancy brass slider crochet hook and a bone example. (7)

£80/120

285

Two 19th Century wooden knitting needle sheaths, comprising a fruitwood Dent Dale example with bone heart engraved 'E+D', the turned shaft with string binding repair and terminating in a brass collar, 26.5cm, and a mahogany Durham example initialled and decorated with hearts, horseshoe and star, 17.5cm. (2)

£80/120

286

Two 19th Century ivory pieces, comprising a baluster handle French knitting stick or knitting Nancy, points worn, 9cm, and an ivory lyre form lucet, 8.3cm. (2)

£40/60

287

Two silver plated spool knaves, the curved frames to a chain and hook, 9.5 and 6cm wide. (2)

£40/80

288

Two Chinese netting cases and two needle cases, comprising a wooden example carved with figures and pagodas amid trees, complete with tools, 16cm, a 19th Century ivory example with tools, 15.5cm, and two 19th Century ivory needle cases one carved with a dragon, 9cm and 6cm. (4)

£50/100

289 – 291

No Lots

Sewing Clamps

292

Two metal sewing clamps, comprising a humming bird example, floral decorated rectangular frame below sprung bird surmounted by a pin cushion, patent details to wings, 13cm, and another in gilded metal with swivel trap over a shell and scroll pierced mount and rope work screw terminal, internally stamped 'SS Messenger' and with diamond registration mark, 10.5cm. (2)

£80/120

293

Two sewing clamps, comprising a cut and polished steel example with decorated rectangular frame below a hook and bird cage reel, 12cm, and a turned rosewood pin cushion top clamp, 10cm.

£50/100

294

Two 19th Century ivory sewing clamps, comprising a rectangular frame example carved with flowers in the oriental style below a turned finial and reel, 13cm, the other similar with roundel decorated frame, 10cm. (2)

£50/100

295

A collection of six 19th Century bone and ivory sewing clamps, including two Canton bone examples, two deficient of parts, largest 11cm. (6)

£30/50

296

A 19th Century carved ivory sewing clamp, the 'C' form leaf and floral carved frame below a carved vase form pin cushion, 13cm.

£40/80

297

Five 19th Century bone and ivory sewing clamps, comprising a rectangular frame example with reel top, 11.5cm, and four Chinese examples, two lacking parts. (5)

£40/60

298

Five sewing clamps, comprising two metal hemming bird examples both lacking pin cushion to frame, 13cm, a similar gilded reproduction example, and two wooden clamps. (5)

£40/60

299 – 301

No Lots

Needle Cases and Related Containers

302

A brass Avery pin or needle case, 'Walnut on Leaf' introduced 1873, on triple leaf scroll base stamped to underside 'W Avery and Son, Redditch' with diamond registration mark, 6.3cm.

£50/100

303

A gilt brass Avery style needle packet case 'The Gem' by 'Patent Perry and Co., London', concertina form, floral covers, 4.7 x 2.5cm.

£40/80

304

An early 19th Century Dieppe carved ivory needle case in the form of a fisherman in traditional costume, a brace of fish in one hand, on hatched oval base, 7.2cm.

£80/120

305

An early 19th Century Palais Royal ivory needle case of rectangular section, gilt ferrule, one side inset with two Verre eglomise panels, the circular example cracked, 9.5cm.

£50/100

306

Three Bristol card type needle books comprising a circular example, needlework border and inscribed 'May you be happy, Hope is the (anchor symbol) of the soul', ribbon ties 6.5cm, another each side, with cross stitch botanical panel, 9cm, and another with stacked card border and inscribed 'Mama, Needles', green ribbon ties, 8.5cm. (3)

£50/100

307

Three needle books comprising a red and white beadwork example of rectangular form, 6cm, a green silk fan form example with coloured beadwork stem sprays, 7cm, and a brown silk example as a set of bellows, 7cm. (3)

£50/100

308

A fine Baxter style needle packet box, containing five further boxes, the boxes in patterned gold foil, the outer box with a floral print within fancy borders, slightly stained and discoloured, the interior with five boxes, four with floral prints the centre box with children at prayer, 10 x 9cm.

(From a connoisseur's collection)

£50/100

309

A Baxter style needle packet box containing the full set of ten fancy boxes, the outer rectangular box with an oval print of an Italianate river landscape within fancy gilt borders, the interior boxes each with a floral design raised in gilt some with red colouring, outer box 15.2 x 10 x 1.5cm.

(From a connoisseur's collection)

£100/200

310

Two tooled red leather needle packet boxes, of book form one decorated with a lyre in gilt and colours, the other in gilt and various colours, both with raised material internal lid panels, 4.8cm. (2)

(From a connoisseur's collection)

£40/80

311

A mother of pearl needle case and ribbon threader, the needle case of rectangular form with gilt ferrule, natural faults to pearl, 7.5cm, together with a mother of pearl ribbon threader of dagger form, 8.4cm. (2)

(From a connoisseur's collection)

£50/100

312

A good French carved boxwood figural needle case, the cylinder body below a waist length figure of a man with crossed arms, broad coat collar and wearing a hat, 10.7cm.

(From a connoisseur's collection)

£50/100

313

Three needle cases, comprising a wooden example in the form of a huntsman's boot, 6.5cm, a split and coloured straw work cylinder example, minor loss, 10cm, and a wooden pointed cylinder needle case carved and painted with an Arab man, 8cm. (3)

(From a connoisseur's collection)

£50/100

314

A fancy box containing twenty five needle packets, most with contents, the rectangular cardboard box with Bristol card panel decorated in steel and glass beads, 9.5 x 6.5 x 3.5cm. (25)

(From a connoisseur's collection)

£30/50

315

Four Bristol card needle books, comprising a pair each with oval colour print, near mint, 5cm, another embroidered with a basket of flowers and initialled 'IV', 4.7cm, and another with flowering jardiniere 'J. Jones 1863', 7 x 6.2cm. (4)

(From a connoisseur's collection)

£50/100

316

A 19th Century French Palais Royal mother of pearl figural needle case, shaped and engraved as an eastern man, the bearded figure with tasselled cap, short jacket and hands thrust in his pantaloons, chips to one side of jacket, small section re-stuck just below waist, 8.5cm.

£200/300

317

Three continental silver needle cases, of shaped and decorated form, largest 7cm., and a pair of Solingen steel scissors the arms with oval bust portrait panels presumably Nicholas II (1868-1916) and Alexandra, 9.2cm. (4)

£50/100

318

A tortoiseshell combination needle packet thimble box of knife box form, the lid with white metal tablet, the four division interior with thimble post and silver thimble, 5cm high, 3.5cm max. width.

£60/100

319

A needle packet box and a needle flannel, the box in blue velvet and of book form decorated with floral 'scraps', the interior with colour print 'To The Front', with a four panel concertina with three packets present for Morris and Yeomans, 7 x 5.5cm, the flannel of bellow form in silk embroidered with flowers, 8cm. (2)

£40/60

- 320**
An early 18th Century needle flannel wallet, of rectangular form in blue floral cloth, the interior fitted with a mirror within gilt braid frame, with two shaped red flannels lightly mothed and with a two division wallet in variant materials, gilded metal 'rope' borders, 9 x 7cm.
£50/100
- 321**
A mid 19th Century continental silver standing figural needlecase, in the form of a woman in elaborate dress, her hands crossed holding a letter or purse, with elaborate head dress, 7cm.
£50/100
- 322**
An 18th Century English silver filigree 'almanack' needle book, each cover with central flowerhead, hinged catch, complete with four red flannels, 6 x 4cm.
£50/100
- 323**
An unusual gilded brass needle packet case, of rectangular form the front with shield and leaf scrolls the bottom edge with three suspended bells and two balls hinged cover with jewelled clasp stamped internally 'Lee's Patent', on a chain suspension with clip, 19cm including chain.
£80/120
- 324**
A polished brass Avery needle packet case, The Easel, the folio with basket of flowers, only two rear retaining hook present, stamped to reverse 'W. Avery and Son, Redditch', 11cm high.
£50/100
- 325**
Three needle cases, comprising a floral painted Spa work cylinder example, 8.5cm, a split and coloured straw work cylinder example, 7.5cm, and a bone example as a furled umbrella with fist terminal, 11cm. (3)
 (From a connoisseur's collection)
£40/60
- 326**
A fine 19th Century carved ivory needle case in the form of a recumbent dog, well detailed with paws forward and tail by rear leg, 7.5cm.
£250/350
- 327**
A fine early 19th Century Palais Royal carved ivory needle case in the form of a quiver of arrows, and decorated with cut steel pins, one side with a sliding lid centred by an enamel and gilt oval pansy motif within a border of cut steel pins, 7.2cm.
£150/250
- 328**
A tortoiseshell needle packet box of knife box form, the lid with white metal plaque, the interior with velvet lined lid over seven bone divisions, 5.4cm high.
£50/100
- 329**
A 19th Century ivory Anglo Indian needle case, of cylinder form decorated with bands and flowers infilled in black, screw cover, 6cm.
£30/50
- 330**
A turned lignum vitae 'Wheeler and Wilson Sewing Machine' needle case, metal numerical domed top, internal brass divisions with numerals to internal wooden rim, 6.2cm.
£40/60
- 331**
Two needle cases and a waxer, comprising a fine carved and turned horn standing needle case surmounted by a carved horn figure of a standing alpine ibex, 8cm, a black horn needle case in the form of a furled umbrella, 9.5cm, and a split and coloured straw work cylinder needle case converted for use as a waxer, 5.4cm. (3)
£50/100
- 332**
A good Tartan ware (M'Lean) needle packet box, of rounded rectangular section, two division interior, a very nice clean example, 4.7cm.
£40/60
- 333**
A mid 19th Century Dieppe carved ivory standing needle case, of a fisherwoman in traditional costume, one hand holding a ring of two fish, hatched rectangular base, well carved elaborate bonnet and dress detail, 7cm.
£50/100
- 334**
An attractive Georgian book form combination needle flannel and pin cushion, the rectangular bone outer covers with a polychrome painted scene of a windmill and farmhouse and a basket of flowers, the internal cover and pin cushion cover with bright and fresh panels of painted flowers, green silk spine and pin cushion, original green ribbon tie. 5 x 3.2 cm.
£80/120
- 335**
An attractive early 19th Century bone needle flannel book, the pierced bone rectangular covers each with two cut out circular panels revealing floral embroidered panel of twin flowers, blue silk spine with green suspension cord, 6.5 x 4cm.
£50/100
- 336**
A brass Avery style needle packet case, 'The Quadruple Minerva Lever Casket – Patented Copestake, Moore, Crampton and Co., London – Patent No. 3517 – 1868', 7cm.
£40/80
- 337**
A gilt brass Avery style needle packet case, 'Alexandra', floral covers inscribed to the clasp and along the hinge edge 'Registered February 11th 1870'. 5cm sq.
£50/100
- 338**
Three 19th Century cylinder form ivory needle cases, comprising a stacked brick example with spiral ends, 8cm, another spirally carved with leaves, 9cm, and a geometric carved example, 9cm. (3)
£50/100
- 339**
Two needle cases, comprising an attractive cylinder example decorated in coloured beadwork with geometric patterns, bone core, 9.7cm, and a bone example in the form of a furled umbrella with turned handle and Stanhope (Lantern Island and Capstone Hill Parade, Ilfracombe), 12cm. (2)
£40/80
- 340**
A tortoiseshell needle packet box, of knife box form the lid with silver tablet initialled and dated 'LG 1883' the interior with seven bone divisions, 5cm high.
£50/100
- 341**
A needle case and a thimble, the wooden needle case in the form of a furled umbrella, 13cm, and a 19th Century two part Chinese ivory thimble. (2)
£30/50
- 342**
A Georgian silver needle case, of canted rectangular section and tapering form nicely engraved with flowers, makers mark only of Joseph Willmore of Birmingham, 7.3cm.
£30/50
- 343**
An early 19th Century ivory cylinder needle case incorporating a perpetual calendar, with a grid of thirty one days over a moveable ring for the days of the week, over a seal base, 6.8cm.
£50/100

- 344**
Three needle cases, comprising a bone example in the form of a furled umbrella, 11cm, a pierced bone example, 8cm, and an early 19th Century silver example of tapering form and cut corner rectangular section, neatly engraved with leaves and flowers, 5.7cm. (3)
£50/100
- 345**
Six various 19th Century bone and ivory cylinder form needle and bodkin cases, largest 12.5cm. (6)
£50/100
- 346**
A good straw work needle or bodkin case and a boxwood tape measure, the needle case of cylinder form with pointed and tasselled ends and decorated in split and coloured straw work, a fine example in near mint condition, 11cm, and a boxwood cylinder form tape measure the complete printed tape in ins., brass coffee grinder handle, 2.2cm dia. (2)
£50/100
- 347 – 349**
No Lots
- Bodkin Cases and Bodkins**
- 350**
A pair of mid 19th Century Russian cylinder cases, probably bodkin cases, each with stained wooden cylinder body below a silver and niello decorated cover with a chain to an oval niello mount with hook, each 12cm excluding chains. (2)
£100/200
- 351**
Two late 18th Century/early 19th Century silver bodkins comprising a plain example with rectangular slot and initialled 'MW', 9.5cm, the other with ear spoon terminal and 'X' scratch decorated panel, 10cm. (2)
£50/100
- 352**
A fine silver filigree bodkin case contained in its original green shagreen case, the cylinder case with panels of swirling filigree below a flowerhead top, 10.2cm, 2.5cm max. dia., the green shagreen case of slightly tapering form, very slight loss of shagreen to bottom section of hinge, the case 11cm.
 (From a connoisseur's collection)
£300/500
- 353**
A rare Georgian combination silver rule/bodkin, in three hinged sections engraved to one side from 1 to 8 inches, one end section pierced with a slot and eye, 8.5cm closed, 23cm extended.
 (From a connoisseur's collection)
£50/100
- 354**
Three bodkins and a stiletto, comprising two carved mother of pearl bodkins, each 5.5cm, a French silver bodkin/earspoon, 7.7cm, and a mother of pearl stiletto with fan carved terminal, 6cm. (4)
 (From a connoisseur's collection)
£50/100
- 355**
A Georgian tortoiseshell and silver inlaid bodkin case, of oval section and slightly tapering form inlaid to each side with two silver panels, one inscribed with the initials 'JE', small chip, 9.5cm.
 (From a connoisseur's collection)
£50/100
- 356**
A Georgian simulated tortoiseshell bodkin case, of oval section, engraved gilt ferrule, gilded core, with a selection of bodkins, 13.5cm.
 (From a connoisseur's collection)
£50/100
- 357**
A late 18th or early 19th Century French lacquered bodkin or billet doux case, of rounded end cylinder form, the mottled yellow ground with two oval panels of flowers divided by the inscription 'Absent De Vous Je Suis J Aloux', 15.5cm.
 (From a connoisseur's collection)
£100/200
- 358**
An 18th Century silk and plaited straw cylinder bodkin case, probably French, with panels of oval and curved straw work, some loss and wear, 13cm.
 (From a connoisseur's collection)
£50/100
- 359**
A scarce steel commemorative bodkin, impressed 'Princess Charlotte Died Nov 6. 1817 Aged 21', 5.5cm.
 (From a connoisseur's collection)
£50/100
- 360**
A late 18th Century English enamel bodkin case, of rounded end cylinder form the pink ground painted in coloured enamels with flowers and gilt leaf sprays, dull brass ferrule, small chips below lower joint, one chip and cracks to base, 12.2cm.
£50/100
- 361**
An early 19th Century ivory bodkin case, the body pierced with circles and spirals, attractive flowerhead pierced ends, 12cm.
£50/100
- 362**
Four bodkins, comprising a gilt brass commemorative example 'Victoria B, May 24 1819 – Crowned June 28 1838' stamped with a crown below the eye, 5cm, another gilt brass decorative bodkin, 6.7cm, a Georgian steel fish form bodkin, 5.6cm, and a plain steel example. (4)
£40/60
- 363 – 365**
No Lots
- Scissors**
- 366**
A pair of French gold mounted scissors, steel blades to baluster gold arms decorated with leaf scrolls below oval loops with leaf scroll decoration, 9cm.
 (From a connoisseur's collection)
£80/120
- 367**
A pair of mid 19th Century French steel scissors, diamond section tapering blades one arm shaped and engraved as a stork the other a fox and a bird below oval loops, on twin cords woven into a steel chain with clip, scissors, 9.5cm.
 (From a connoisseur's collection)
£50/100
- 368**
A pair of Georgian steel scissors with engraved silver sheath, tapering blades stamped 'Oliver' and 'GR' below a crown, the shaped and file cut arms below balls and oval loops, the sheath engraved with a vacant shield, bright cut and engraved decoration, 9.5cm.
 (From a connoisseur's collection)
£50/100
- 369**
Three pairs of 19th Century steel scissors, comprising a French pair, the arms shaped and engraved as a swan, 7cm, an elegant pair shaped and engraved as a stork, 8.5cm, and a pair with file cut arms, 9.5cm. (3)
 (From a connoisseur's collection)
£60/100



49



50



51



52



54



55



56



57



63



70



58



61



71



74



77



78



80



82



85



87



91



95



96



97



99



94



100



110



108



109



111



113



115



119



117



121



123



126



128



127



133



129



138



132



134



137



139





143



151



146



148



158



154



156



153



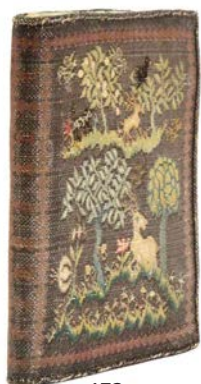
159



161



163



172



173



174



175



176



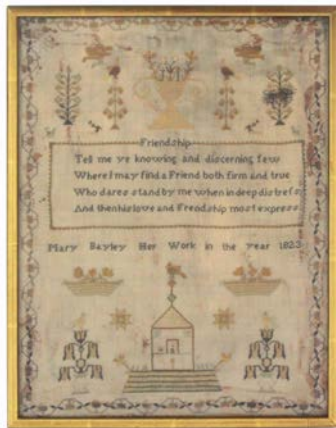
179



183



184



190



191



192



193



194



195



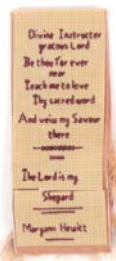
196



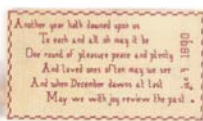
197



200



199



198



201



202



203



204



205



218



220



227



232



234



241



243



234



235



241



268



245



248



252



271



276



278



283



285



281



287



286



302



275



282



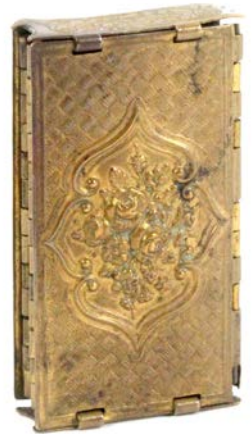
292



293



296



303



304



305



312



313



316



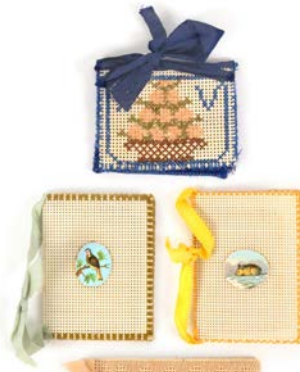
321



309



310



315



318



320



322



323



328



326



332



333



343



346



357



360



361



334



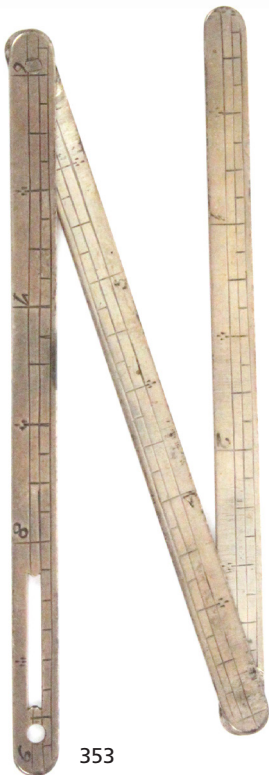
335



352



355



353



366



367



368



376

377

378

379



386

387

392

395



380

385

400

401



405

407

409

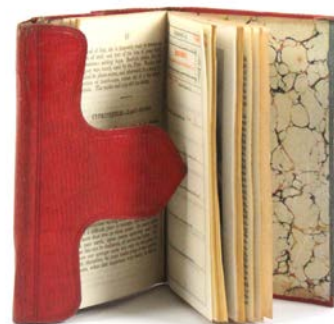
411



430



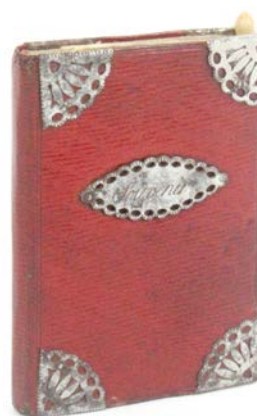
456



458



431



462



467



434



468



435



473



475



478



436



469



470



471



481



483



484



491



492



493



494



496



499



500



498



502



505



508



511



520



523



527



528



531



526



532



534



538



530



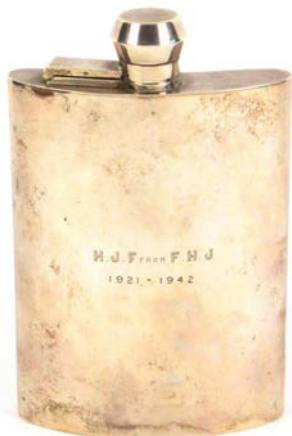
546



572



547



559



573



575



549



566



570



577



578



580



581



582



584



586



585



591



594



600



603



604



606



605



608



652



654



656



658



612



663



614



613



617



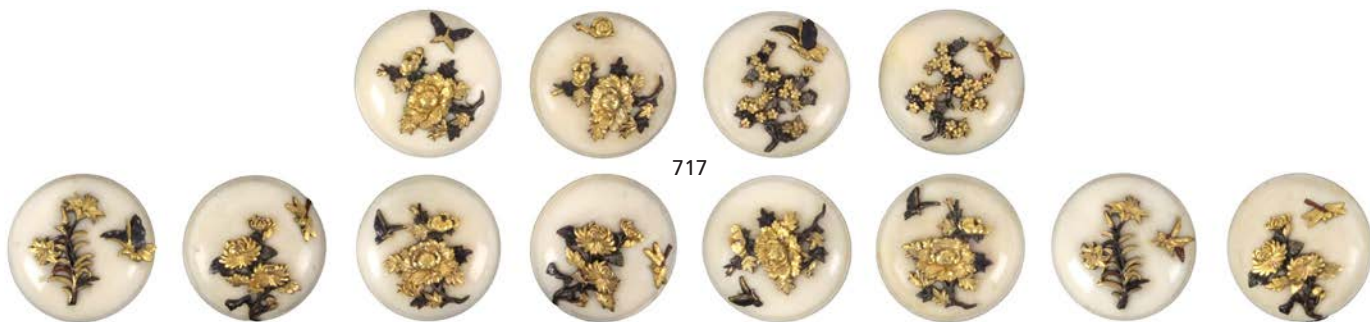
711



713



714



717



718

370

Five pairs of 19th Century scissors, comprising a folding chatelaine pair with white metal arms and loops, 6.7cm closed, a steel pair in the form of a stork, 7.5cm, and three other pairs. (5)

(From a connoisseur's collection)

£50/100

371

A set of three graduated scissors in leather case, the steel scissors stamped 'NCC Socy Ld., Sheffield, Hand Forged', scroll arms to file cut loops, in a triangular form leather case with silver and enamel clasp, the larger pair lacking some original finish, the case 15.5cm.

£40/80

372

A cased pair of 'Everserver 'DB' Scissors', in gilt metal, variously stamped and with patent, in leatherette rectangular case flush fitted in blue velvet with a pair of replacement blades, scissors 16cm, case 19.5 x 8.5cm.

£30/50

373 – 375

No Lots

Thimbles and Thimble Cases

376

A silver thimble by Georg Jensen, the frieze with tulip form motifs below a green stone top, stamped 'Sterling Denmark – 925 – 47 – Eorg Jens'.

£30/50

377

An attractive Victorian gold thimble the leaf scroll and flower engraved frieze set with two turquoise coloured stones divided by a pearl below a vacant shield over a faceted rim.

£100/200

378

An American gold thimble and another, the first stamped to the internal apex '10K' the engraved frieze in triangular panels divided by a vacant rectangle, the other by Simons Bros., the leaf and flower decorated frieze below a plain band engraved 'Laura'. (2)

£60/100

379

Two Worcester porcelain thimbles comprising a puce ground example decorated with a bird on a flowering branch and with a leaf spray between gilt lines, and a Royal Worcester black mark example painted with flowers and leaves indistinctly initialled. (2)

£40/80

380

Three American thimbles comprising a silver gilt example by Stern Brothers and Company, engraved frieze initialled 'LLL', another with silver gilt frieze, and another in silver with engraved frieze, all with internal apex marks. (3)

£40/80

381

Four English silver thimbles and a selection of others, two by James Fenton, two by Charles Horner, and fifteen other thimbles including a Just a Thimbleful. (19)

£40/80

382

Two French silver fable thimbles, 'The hare and the tortoise' and another 'The wolf and the lamb'. (2)

£50/100

383

Two French silver fable thimbles, 'The broken pitcher' stamped 'France', and another 'la Ronde' girls dancing with garlands to a female lyre player, stamped 'France'. (2)

£50/100

384

A fine 18th Century gold studded green shagreen thimble case, of canted square section below a curved hinged top rising to a panel of gold studs, the red velvet interior with a later brass thimble, 4.5cm.

(From a connoisseur's collection)

£100/200

385

A mother of pearl Palais Royal style thimble, the plain frieze between copper gilt bands.

(From a connoisseur's collection)

£50/100

386

A fine early 19th Century thimble case with ivory thimble, the case in turned coquilla carved with military trophies, love birds and geometric motifs with ivory screw mount and finials one initialled 'B', the ivory thimble with copper gilt border, case 4.5cm, thimble 2.4cm.

(From a connoisseur's collection)

£100/200

387

A late 18th Century English enamel cylinder form needle case with thimble top, the cream ground painted with a spiralling ribbon interspersed by violet flowers, dull brass screw mount, the thimble with pink enamel interior, minor abrasions, 4.5cm.

(From a connoisseur's collection)

£100/200

388

Two Georgian steel top silver thimbles, one with plain reeded edge frieze, one with leaf engraved frieze with vacant cartouche. (2)

(From a connoisseur's collection)

£40/60

389

Four thimbles and a thimble case, comprising a ribbed silver finger guard, two 19th Century ivory thimbles, and a white wood thimble barrel with spot decoration and brass thimble, 4cm. (5)

(From a connoisseur's collection)

£40/60

390

Six silver thimbles, comprising a Georgian steel top example the engraved border with vacant cartouche, a Georgian example with crescent and leaf engraved frieze with initialled cartouche, and four others one for a child, one with cable style border and vacant shield. (6)

(From a connoisseur's collection)

£50/100

391

A French straw work box possibly for a thimble, of trapezoid form in coloured and split straw work, the lid with a slightly raised design of a bee or similar insect, 5.5 x 4.5cm max.

£40/60

392

An attractive early 19th Century gold thimble, possibly Tunisian/ Armenian, the punched domed top over plain sides with a broad frieze of scrolling leaves divided by polished panels over a beaded rim, in leather covered velvet lined case.

£100/200

393

A 19th Century French 'fable' thimble, the fox and the crow, a little mis-shapen, in a metal and velvet trunk form case.

£40/80

394

Two 19th Century mother of pearl thimbles, comprising a Palais Royal example cracked and lacking oval pansy motif, in a leather case, and another with chip to top, plain frieze between two metal bands. (2)

£40/80

395

A good late 18th Century French egg form thimble case, carved from a nut, the lower section with a basket of flowers and musical trophies, 3.5cm.

£50/100

396

A collection of thimbles and two thimble cases, comprising five 19th Century ivory examples, eight silver examples including five with stone tops, a silver gilt continental example with enamel border, a silver finger guard, s.d., three others, an ivorine thimble case and a leather example. (20)

£50/100

397

Seven thimbles, comprising 'The Boudoir' in original box, an unusually large example with decorative frieze stamped 'Patent', 2.5cm, two silver finger guards one s.d., an unusual James Fenton thimble with 925 stamp and steel upper section, a Dreema with stone top, and a 'Pat 11' engraved to rim 'Revenge 3'. (7)

£50/100

398

A boxed display of ten variously decorated German and Austrian metal thimbles, with descriptive cards as issued by Scotland Direct Ltd., the glazed top circular box 10cm dia.

£20/30

399

A collection of thimbles, comprising eleven silver thimbles, five hallmarked including a modern example in the form of an owl on wooden stand, a Georgian silver finger guard, and a damaged example probably depicting the Great Exhibition, together with a plastic fungus form thimble compendium, thirty three other thimbles and a wooden thimble stand. (46)

£40/80

400

A Norwegian silver and enamel thimble by David Andersen, the beaded white dot enamel rim below a blue scroll enamel wave border, mark to internal apex and stamped 925S

£150/250

401

A Norwegian silver and enamel stone top thimble by Askel Holmsen depicting a reindeer pulling a sled with Sami in a winter landscape, mark to internal apex and stamped 925S

£200/400

402

No Lot

Miscellaneous Sewing

403

A mixed lot – sewing, comprising an embroidered strawberry emery on initialled silver handle stamped 'Sterling', 8.5cm, a hat form needle flannel and matching pin cushion, a plastic thimble/needle case, a book form thimble box and a turned wooden seal case. (6)

£40/80

404

A mixed lot – sewing, four 19th Century ivory pieces comprising a burnt circle barrel form tape measure, tape lacking, chip to top rim, 4cm, a flowerhead top tape measure with basket weave body complete with hand inked tape in nails, 3cm, a similar waxer, 3.2cm, and a pedestal pin cushion, slight crack, 5.5cm. (4)

£60/100

405

A good Palais Royal note book, bound in grained green leather, the covers each with a panel of crackle glazed red lacquer within gilt and steel borders the front cover with a shield inscribed 'Souvenir', the interior with printed label 'Au Coq Honore, Rue Au Coq St. Honore No. 7, Ches Alph Groox' the pages interspersed with the months of the year each with a charming engraving, some pencil sketches, some ink notes, pencil closure, 10.5 x 7.2cm in a later bag.

(From a connoisseur's collection)

£100/200

406

A fancy needlework booklet – Hope (G.C.) – My Working Friend, Being Plain Directions For The Various Stitches in Fancy Needlework 2nd edn., enlarged, 79pp plus advert, c1850, fancy maroon covers with title and needlework frame in gilt, the borders with raised lettering Patience/Perseverance/Application/Industry with GHC monogram corners, 12.7 x 10.7cm.

(From a connoisseur's collection)

£30/50

407

Three Regency red leather sewing accessories, comprising a small rectangular box with swivel catch, the lid with gilt flowerhead, green paper lining, 7cm, a wallet form holder for miniature tools, 6.5cm, and a purse form skein holder incorporating a needle flannel and needle packet pouch, the interior in green leather and initialled in ink 'ESF', 5cm sq. closed. (3)

(From a connoisseur's collection)

£50/100

408

A mixed lot of 19th Century ivory sewing tools, comprising a lyre form lucet, 8.5cm, a reeded cylinder needle case, 7.2cm, another, a turned reversible stiletto, 7cm, three small ivory reels, and an ivory needle book. (8)

(From a connoisseur's collection)

£50/100

409

Three examples of Bristol card, comprising a red felt needle book in the form of a purse with geometric stitch work on ribbon handle, 5cm, a pin cushion inscribed 'For You Florie/Pin Cushion 1900', 4cm, and a concertina needle packet holder, 3.7cm. (3)

(From a connoisseur's collection)

£40/80

410

Six continental silver sewing tools, comprising a leaf decorated oval section needlecase, 6.8cm, a silver handled stiletto, and a pair of steel bladed scissors with decorated silver arms and loops, and a similar trio. (6)

(From a connoisseur's collection)

£60/100

411

A French 19th Century ivory tailors rule, of ten hinged sections engraved in ins. and cm., 36 ins. max., 12.5cm closed.

£40/60

412

A mixed lot – sewing, comprising a leather book form 'Lady's Companion', leather tool card with three fittings, 9.5cm, a Spa work floral decorated reel, thimble and needle case of tapering cylinder form, 12cm, three pin cushions/retainers, a Lace Tablet, slight loss and a Chinese 19th Century carved ivory cylinder needle case, 8.5cm. (7)

£50/100

413

A skein holder and four Bristol Card exercises, the skein holder in canvas embroidered with flowering geometric branches and ribbon ties, containing three papers with skeins, 24cm, an oval Bristol card needle book one side with neatly hand written panel 'Remember Me' the other 'I Never Can Forget', 8.7cm, and three religious panels. (5)

£50/100

414

A mixed lot – sewing, comprising a pierced and engraved standing pin cushion inscribed 'Dieppe', 6cm, another, 5cm, a vegetable ivory disc form pin cushion, another in pierced bone, split, a mother of pearl needle book, chip to one corner, and a cut mother of pearl disc form emery. (6)

£50/100

415

Five useful sewing reference books, comprising Embroidery edited by A.H. Christie, James Pearsall and Co. 1909, Ex Worcester Library / Chatelaines – Utility To Glorious Extravagance – Cummins and Taunton, reprinted 1996 / Antique Needlework Tools and Embroideries – N. Taunton, 1997 / The History of Needlework Tools and Accessories – S. Groves, 1966 / Old-Time Tools and Toys of Needlework – re-print 1971. (5)

£40/60

416

Lady's exercise pieces, comprising a miniature beadwork decorated bonnet, 3cm, a beadwork bag, 10cm, two miniature beadwork baskets and a fish, 2.5 and 3cm, an embroidered Bristol card circular hair memorium in paper wrap, 6.5cm, a Bristol card needle book, a stamp case, and three other pieces in a fancy card box. (12)

(From a connoisseur's collection)

£50/100

417

A mixed lot – sewing, comprising a Palais Royal mother of pearl circular box with pansy motif to lid, chip to edge of base, 2.7cm, a mother of pearl handled stiletto, two bone crochet hooks, a fish form bodkin, and two cardboard boxes fitted for crochet tools. (7)

(From a connoisseur's collection)

£50/100

418

A mixed lot – sewing, comprising five pairs of steel scissors, largest 10cm, two needle packet books, a material reel case, 10cm, a rectangular floral decorated white wood pin cushion, 7cm, a Mauchline ware cylinder waxer (Robin – A Merry Christmas), 3cm, and a vegetable ivory basket weave pin cushion, 5cm high. (10)

(From a connoisseur's collection)

£50/100

419

A mixed lot – sewing, comprising a golliwog pin flannel, 15cm, a turned boxwood reel and needle case, 14.5cm, sundry reels, thimbles and other pieces. (qty)

(From a connoisseur's collection)

£20/40

420

A nanny brooch, the scrolling mount with circular spangle with needle case and thread reel, stamped 'F.S. Gesch', 5cm.

£30/50

421

Three darners, comprising an ebonised egg form example on silver handle stamped 'Sterling', a double ended wooden example with spiral decorated silver handle, 11.5cm, and a wooden example, 12cm. (3)

£40/60

422

A mixed lot - sewing, all 19th Century ivory pieces comprising five cotton barrels, a thread winder and two reversible stiletos, last 9 and 7cm. (8)

£50/100

423

A mixed lot – sewing, comprising a tortoiseshell needle book, 6.5cm, another in material with beadwork decoration, 5cm, a bone multiple reel, a bone emery with mother of pearl top, two needle cases, three bone handled tools, a mother of pearl handled corkscrew, and 'H. Walker Bell Gauge', 7cm. (11)

£50/100

424

A mixed lot – sewing, comprising a wooden table clamp wool winder, 27cm, a wood and ivory 19th Century netting reel, 14.5cm, a collection of thimbles and two thimble compendiums, a pair of oval section containers with hinged lids one fitted with a pair of folding scissors the other a bodkin, two silver pencils, a Stevengraph silk picture 'The Good Old Days', framed, and other pieces. (qty)

£40/60

425

A mixed lot – sewing, comprising a bone standing double ended pin cushion below a tape measure lacking winder and tape, 7.5cm high, a cardboard 'sew swell' thread winder, 7cm, a rosewood barrel form tape measure the complete tape inked in nails, 3.2cm, and eight Coats wooden cotton reels. (11)

£40/60

426

A mixed lot – sewing, comprising a good 19th Century ivory tape measure of acorn form with floral carved top, 4cm, two silk sack form emeries, a bone disc form pin cushion, slight loss to edge, a reversible ivory stiletto, a pair of bone knitting needle protectors, two Chinese bone thread barrels lacking handles, and a pair of silver handled scissors. (10)

£50/100

427 – 429

No Lots

Lace Bobbins and Related Items

430

Two attractive bone lace bobbins, comprising an example attributable to James Compton spot inscribed 'Elizabeth Turvey Was Born March 8, 1822', and another similar 'William Maddecks Died June 22, 1849, Aged 40 Years'. (2)

£50/100

431

A 'hanging' bone lace bobbin, spot inscribed 'William Bull Hung 1871'.

£100/200

432

Two wooden lace bobbins, comprising an attractive whittled and chip carved example, pierced spiral body inscribed 'Carline – Baley, 1860'/a wooden mother and babe. (2)

£40/60

433

Five inscribed bone lace bobbins, comprising / Betsy with Kitty Fisher bead / David 1872 / Charles between unusual red stained hatched panels / Samuel Harris 1833 / John Tompson Dainty. (5)

£40/80

434

Three bone lace bobbins, all spiral and spot inscribed comprising / Elenor Halton Died May 13 1831 / Mary Quick and Love Me For Ever / Patience Jane Davis 1840. (3)

£80/120

435

Three bone lace bobbins, comprising / a spot inscribed spiral 'When This You See Remember Me' / a spot inscribed spiral 'Samuel Lovel-Hausham – 1832' / a spot inscribed spiral 'Charlot Whittaker Died Oct. 24 1843 Aged 21'. (3)

£60/100

436

Two bone lace bobbins, comprising / a mother and babe with coloured spot decoration / a wire bound and beaded bobbin. (2)

£40/60

437

Eleven various lace bobbins, comprising / a wood and a bone example with evil eye beads / a pewter spot decorated example with bird cage spangle / a bone example with serpent's eye bead / a 19th Century ivory example / a green stained bone example / a purple heart wood example / a green plastic WWII example / two bone bobbins / a wooden bitted bobbin. (11)

£40/60

438

Thirty one assorted lace bobbins, in various materials including some modern commemoratives. (31)

£40/60

439

Eight decorated Honiton lace bobbins, comprising / a spiral inscribed in red and blue 'Weep not for me tis all in vain we only part again ES/RM' / another spiral in red and blue 'AP Be You a Child Of Grace And a Place' / another inscribed CB-RW anchor heart and other motifs / another fishes and geometric motifs / and two others. (8)

£50/100

440

Forty six Midlands type wooden lace bobbins, mostly modern. (46)

£30/50

441

Forty seven Midlands type lace bobbins, mostly modern. (47)

£30/50

442

Forty four lace bobbins, comprising twenty four Midlands type and twenty Bruges type. (44)

£30/50

443

One hundred and thirty six Honiton type lace bobbins, mostly modern. (136)

£40/80

444

Twenty seven wooden lace bobbins, mostly old including a Downton, two Malesbury, and others together with a box with inset lace panel. (27)

£30/50

445

A copper lace token 1795, one side with a lady lace maker under a tree and 'Lace Manufactory 1795' the reverse with a scroll 'Muslims – Irish Cloth – Hose and C – Moore, No. 116, Great Portland Street', 2.7cm dia.

£50/100

446

A copper lace token, of circular form one side with a lady seated at her lace pillow below a tree and inscribed 'Lace Manufactory', the other 'Berkhamsted or London Pay At Leighton' encircling a sheep and the date 1794, 3cm dia.

(From a connoisseur's collection)

£50/100

447

Ten lace bobbins, comprising a double mother and babe with replacement sealing wax end, 9cm, a spot named example 'Harriot', another 'Maria', another 'William Elles, 1827', two other bone examples and four wooden. (10)

£50/100

448

Ten lace bobbins, comprising an old bone spot decorated spiral, three modern bone examples two painted, a modern wooden example inlaid and five well painted modern examples some signed with initials, four emblematic of the seasons. (10)

£40/80

449

Seventeen bone lace bobbins, including a beadwork decorated example, a gold foil spiral, five brass wire bound examples, and others mostly spot decorated. (17)

£50/100

450

Thirty bone lace bobbins, comprising fourteen plain examples, thirteen decorated, and three red stained, one labelled as being Australian in origin. (30)

£40/60

451 – 453

No Lots

Miscellaneous

454

A silver vinaigrette and a thimble box, the first of square section and tapering form with decorated hinged top and side panels, circular gilt engraved grill, London, 1853 makers mark AD, loop suspension, 4.5cm, the cylinder thimble box stamped '925', 2.5cm. (2)

£80/120

455

A 19th Century Indian ivory card case depicting to one side Durga slaying the demon buffalo, cracks, 10 x 7.2cm.

£40/80

456

Two 19th Century ivory pieces comprising an engine turned circular box containing four circular playing card markers 3cm dia., and a small ivory handled brush, 5cm. (2)

£40/80

457

A leather wallet bound book – The Gem or Useful Pocket Book Adapted for Youth, 1853, published by R and A Suttaby ..., title page engraving of Malaga, pencil notes, the grained red leather binding incorporating a pouch and pencil provision, 10.5 x 7.5cm.

(From a connoisseur's collection)

£50/100

458

A leather wallet bound book – Marshall's Cabinet of Fashion for 1826, London, published by W. Marshall, some calendar pages lacking as only September to December present, engravings, poems, tunes, etc., marbled end papers, the grained red leather binding incorporating a pouch and pencil, 12 x 8.5cm.

(From a connoisseur's collection)

£40/80

459

Two slightly graduated print decorated rectangular cardboard boxes, the larger with a colour print of a boy playing a flute with a girl tickling him with a branch, the other a boy riding a horse with two young girls holding flowers, the largest, 11 x 7.8 x 3.5cm. (2)

(From a connoisseur's collection)

£40/60

460

A mix 19th Century red leather bound book with hinged hand coloured plates – The Lady's Toilet, London, Rock Brothers and Payne, the tooled covers titled to the front in gilt 'The Lady's Toilet', colour frontis, nine moveable colour plates with linen hinges, 20 gilt edge pages, 11.5 x 10cm, in cloth wallet. ± The company was founded by William Frederick Rock 1801-1890 and in 1821 partnered to form De La Rue, Rock and Co., between 1833-1843 William and Henry Rock, and from 1844-1853 Rock Bros and Payne.

(From a connoisseur's collection)

£200/400

- 461**
A small 19th Century album of Chinese pith paper costume studies, worn red silk covers, loose tissue printed paper Emperor/ Empress/Prime Minister, his Lady, twelve hand painted images each within a blue silk ribbon border, cord ties, 13 x 9.5cm.
 (From a connoisseur's collection)
£50/100
- 462**
A French 'Souvenir' note book and calendar, 1829, the grained red leather covers with pierced steel spandrils the cover with an oval tablet engraved 'Souvenir', silk end papers and wallet pocket, the note book with pencil inscriptions, on the last page a concertina printed calendar 'Calendrier Portatif por L'Année 1829, A Paris, chez Le Fuel – Editeur, Rue St Jacques, No. 54, pres celle due Foin', complete with ivory stylus, 8.2 x 5.7cm.
 (From a connoisseur's collection)
£100/200
- 463**
Two 19th Century miniature scent bottles, each of cut circular clear glass with silver screw tops below loops, one with internal stopper, each approx., 3cm. (2)
 (From a connoisseur's collection)
£40/80
- 464**
A mid 19th Century mother of pearl mounted purse, of shaped outline one side with inlaid silver cartouche, red silk three section interior, 8.5cm.
 (From a connoisseur's collection)
£40/80
- 465**
Two late 18th Century/early 19th Century English enamel boxes, comprising a yellow ground egg form example decorated with a seaweed type pattern, copper gilt screw ferrule, 3cm, and a small circular box the lid inscribed 'Esteem the Giver' pull off cover with dull brass mounts, the base section in pink enamel, cracks to cover and losses to base, 2.2cm dia. (2)
 (From a connoisseur's collection)
£50/100
- 466**
A late 18th Century ivory circular box, the lid inset with a painted panel of an eye under glass, the base engraved 'Oh May You See My Love For Thee' within a floral and ribbon border, 5cm dia.
 (From a connoisseur's collection)
£100/200
- 467**
A pair of late 18th Century English enamel mounted brass handles or curtain tie backs, each with a domed coloured enamel circular panel head and shoulders of a lady reading a book in brass circular frame with a border of linked circles, tin backs to brass tapering stems terminating in steel screws, the enamel to one a/f, 5cm dia., 7cm overall. (2)
 (From a connoisseur's collection)
£100/200
- 468**
A late 18th Century English enamel mounted brass handle or curtain tie back, with a domed black and white enamel plaque of a woman seated in a garden, within a circular brass frame, tin back, to a brass tapering stem terminating in a steel screw, 4.6cm dia., 6.5cm overall.
 (From a connoisseur's collection)
£100/200
- 469**
An attractive early 19th Century ivory fan, probably Chinese, the pierced ivory guards enclosing pierced ivory sticks each terminating in a polychrome painted panel of birds, flowers and insects, paste set silver loop, 19.2cm closed, 30.5cm max. open.
 (From a connoisseur's collection)
£150/250
- 470**
An early 19th Century bone and paper fan, plain shaped bone guards and sticks, the paper guard edged in gilt foil and painted with birds of peace either side of a cornucopia of fruit and inscribed 'Peace and Plenty – Unity and Concord' with leaf swags, 25cm closed, 42cm max. open.
 (From a connoisseur's collection)
£80/120
- 471**
An early 19th Century print and paper decorated fan, the pierced, carved and shaped guards to pierced ivory sticks, the paper guard painted with white crescents with sequins backed by painted flower swags and leaves with a central circular print of a young girl and boy, 26.5cm closed, 46cm wide.
 (From a connoisseur's collection)
£50/100
- 472**
A 19th Century fan and another damaged, the first with pierced bone sequin decorated sticks and guards to a red star and circle pierced paper guard, sd, 24.5cm closed, 44cm max. open, the other fan a/f. (2)
 (From a connoisseur's collection)
£30/50
- 473**
Two early 19th Century Oxford lavender scent bottles, one in blue glass with gilt and white oval panels and other motifs, complete with ball stopper, 16.5cm, the other in clear glass decorated with dot form blue, cream, pink and white flowers with gilt crosses, complete with gilt lollipop stopper, 19cm. (2)
 (From a connoisseur's collection)
£60/100
- 474**
Two early 19th Century Oxford lavender scent bottles, one in amber glass decorated with blue petal flowerheads and other motifs, complete with crescent shaped gilt stopper, 14.5cm, the other in clear glass with oval gilt panels enclosing spot decoration in blue, red, and cream, complete with stopper, 19.5cm. (2)
 (From a connoisseur's collection)
£60/100
- 475**
Two smaller format 19th Century Oxford lavender scent bottles, both in clear glass overlaid with gilt patterns, both with stoppers, 12cm and 9.5cm. (2)
 (From a connoisseur's collection)
£50/100
- 476**
Three 19th Century clear glass scent bottles, two with verre eglomise style green glass and gilt panels and jewelled decoration, both with stoppers, 11cm and 7cm, chips to base of smaller, and a gilt scent bottle, the top encased in sealing wax, 6.5cm complete with cardboard box.
 (From a connoisseur's collection)
£80/120
- 477**
Four small toy or doll scent bottles, comprising two early 19th Century powder flask form examples one in white spirals with blue rim, 4cm, the other in white lattice, 4cm, another of tapering cylinder form in white spirals with green rim, 5.5cm, and a late 19th Century cut glass cylinder scent with stopper, 4cm. (4)
 (From a connoisseur's collection)
£60/100
- 478**
A pair of 18th Century glass salts of oval form, within eight point borders the bases set with painted glass panels one of a gentleman waist length holding an umbrella, the other a lady, multiple chips but charming 8.2cm. (2)
 (From a connoisseur's collection)
£50/100

479

An unusual early 19th Century quill pen, the tapering shaft bound in gold silk and decorated with white beads with letters and geometric motifs and terminating in a gold tassel, 30cm.

(From a connoisseur's collection)

£30/50

480

Four 19th Century bangles and bracelets, comprising a pair of cord and coral bead with fancy gilt clasps, 17 x 5cm, a coloured floral beadwork bracelet, the gilt clasp set with a large green glass faceted jewel, 19 x 4 cm, and a bangle, probably Palais Royal, the octagonal mirror mount centred by a floral petit point panel within gold foil borders, the bangle in fancy raised gilt paper decorated with leaves, flowers and anthemion, 5cm dia. (4)

(From a connoisseur's collection)

£50/100

481

An early 19th Century oval miniature on ivory, of a girl wearing a gold earring, a white collar and double breasted black blouse set against a sky background, the gold frame engraved around the edge 'From Mary Elianora Wickham to Mary and Eliosa Blake' the back with hair memorium in the form of a flower with jewelled decoration, 7.5 x 5.5cm.

(From a connoisseur's collection)

£150/250

482

An early 19th Century card case and a note book, the card case in grained green leather, each side with steel fan form spandrels, 8 x 5.5cm. (2)

(From a connoisseur's collection)

£40/80

483

A late 18th Century/early 19th Century egg form purse, decorated in coloured and split straw work with four panels of flowers the red paper interior containing a blue silk drawstring purse with ribbon tie to base, 8cm.

(From a connoisseur's collection)

£60/100

484

A good example of a Victorian pedlar doll, on ebonised base under a glass dome, the doll with painted face, black bonnet and red cloak, the basket with numerous sewing tools, gloves, miniature slippers, misers purse, bags, copper kettle, basket handle broken, the doll 20cm high 27cm under dome.

(From a connoisseur's collection)

£100/200

485

A cut paper valentine named 'Caroline Ford 1820', within a heart with two figures in an arbour with a further cut paper shell and floral branch, in a maple frame, 30 x 25cm.

(From a connoisseur's collection)

£30/50

486

A collection of antiquities, Egyptian beadwork, comprising a panel of Egyptian beads arranged as an Egyptian female face, 12 x 13cm, and two strings of Egyptian beads. (3)

(From a connoisseur's collection)

£50/100

487

A collection of antiquities, comprising a Roman glass bottle with three applied flower motifs, 19cm, a red clay circular Roman lamp, 9cm, a conical lamp with handle labelled circa 300-350 AD, 9cm, and a clay storage vessel, 14cm high. (4)

(From a connoisseur's collection)

£50/100

488

A collection of antiquities, comprising a Romano-Greek head, 1st or 2nd Century AD, a similar period bowl, 10cm, a Syrio-Hittite votive pottery chariot model, 2nd millennium BC, 7cm, and a Roman lamp the dished centre embellished with a horse, 11cm. (4)

(From a connoisseur's collection)

£50/100

489

A collection of antiquities, comprising a clay figure of a General on horseback, Syrian, 11cm, including later plinth, a Greek pottery votive figure of a bird, 1st Century BC, 9.5cm, a Roman pottery lamp, 8.5cm, and a stone torso labelled 'Romano-Celt Found Longthorpe, Peterborough', 9.5cm. (4)

(From a connoisseur's collection)

£80/120

490

A collection of antiquities, comprising an ancient Roman bronze fibula 'Trumpet Derivative' type circa 2nd Century AD, 4.5cm, a re-strung Roman glass bead necklace including 'birds eye' examples, and a single blue faceted glass bead. (3)

(From a connoisseur's collection)

£50/100

491

A boxed German valentine or greeting card 'Gold Fischen', the green paper card box with title in gilt paper cartouche, the card in the form of a frame enclosing a wall bracket with printed verse supporting a basket of three dimensional cloth flowers beside a colour printed gold fish bowl, 9.2 x 10cm.

(From a connoisseur's collection)

£30/50

492

A 19th Century oriental ivory and lacquer decorated visiting card case, of rectangular form with pull off lid, each side decorated in red and gold lacquer with a bird before bamboo, 10.5 x 6.7cm.

£100/200

493

A Regency penwork visiting card case, of rectangular book form, divided floret spine each 'cover' with a chinoiserie figural panel on a black ground, one end pin hinged, 7.4 x 10.7cm.

£80/120

494

A rare 19th Century ivory swivel notelet, the covers carved and titled 'Napoleons House – Napoleons Tomb', floret pivot, hinged clasp, 9 x 4.5cm.

£100/200

495

A 19th Century French ivory and silver mounted note book, blue velvet spine, the cover pierced and engraved in silver with a vacant shield over ivory, silk lined interior with wallet, pages titled in French for days of the week, complete with stylus, 9.5 x 6cm.

£50/100

496

A French late 19th Century note book with 'pop up' picture, the grained red leather covers inscribed to the front in gilt 'Souvenir', the bordered card pages centred by two central silk leaves which when opened reveal a three dimensional red paper flowerhead amid 'scrap' style flowering branches and leaves, pencil closure, complete with card sleeve, 9.5 x 6.7cm.

£60/100

497

An early 19th Century Palais Royal swivel notelet, the mother of pearl covers with stepped arched top and engraved borders, the cover with gilt and enamel pansy motif, three card pages, 5 x 3.2cm.

£50/100

- 498**
A mid 19th Century tortoiseshell and gold inlaid rectangular box, the lid inset with flowers and leaf scrolls, vacant oval cartouche and rope work border containing a steel stiletto and button hook each with tortoiseshell handle, 7.8 x 2.2cm. (3)
£80/120
- 499**
An attractive early 19th Century French satinwood and cut steel pin decorated wall mounting letter rack, of shaped rectangular form with borders of cut steel pins, with seven angled divisions each lettered in cut steel pins for a day of the week, 25 x 6cm.
£60/100
- 500**
A French rectangular cardboard box containing two miniature glass scent bottles, the box in green with raised gold borders, the curved glass lid reverse decorated in colours with a woman seated in a garden by a toppled bust, wear to edges, 8.5 x 6cm., the powder flask form scent bottles with white spiral decoration with beaded glass borders one inscribed 'HR Mar.25 1818', the other 'MT 1818', very minor loss to beaded borders, 4.5cm.
£100/200
- 501**
Of George IV interest – a circular French green cardboard box, the lid with figural colour print below the title 'Pastilles fumantes' and inscribed in ink to the base 'From George IV dressing room', 6.2cm dia.
£40/80
- 502**
An early 19th Century French rouge box with original contents, the cardboard blue and green rectangular box with pressed paper borders the lid centred by a diamond shaped print of cupid, the interior with mirror to lid and containing a landscape decorated square porcelain tray with paper hinged printed label 'No 18, Nouveau Rouge Vegetat Superfin aux Fleurs A', over a further label, the base with a printed circular label 'Gervais Chardin Rue St Martin à la Cloche à Argent, à Paris', the compartmentalised box with drumstick form applicator, 8.5 x 7 x 2.7cm.
± A further ink inscribed label to the base 'Belonged to Caroline Hay (Married Cooper) Beatrice Lambert's G. Mother'.
£80/120
- 503**
A Palais Royal style cut glass scent bottle, with gilt metal screw top, complete with internal stopper, 7.5cm.
£40/80
- 504**
Three 19th Century purses, comprising a green and steel beaded misers purse with elaborate steel end loops, 32cm, a mother of pearl purse one side inlaid with leaf scrolls and a cartouche in white metal, three division silk interior, 7.5cm, and a white lacquer panel purse one side with silver inlay, three division silk interior, 4.7cm. (3)
£50/100
- 505**
A printed paper alphabet and Lords Prayer 'horn board', the paper panel printed in red and black 'Printed at Nurenburch' in a rectangular frame the reverse and handle decorated in white metal filigree work, 11 x 5.5cm.
£80/120
- 506**
A 19th Century ivory handled seal and a wax impression of the Privy Purse seal, the seal with gilt metal mount to hardstone intaglio with shield and motto, 8.5cm, the wax seal contained in a locket style circular case with scroll handle, 6cm. (2)
£50/80
- 507**
A mid 19th Century steel mounted purse, probably Russian, one side decorated with floral panels and borders, the other with buildings both etched and overlaid with gilt, leather hinge mount with silk interior, 14.7 x 5.5cm.
£50/100
- 508**
A mid 19th Century French carved coquilla scent flask, of oval form carved with the fox and the stork after Aesop within a border of leaves and flowers, lacking screw stopper, 5.2cm.
£40/60
- 509**
A polished brass Eureka skirt lifter, of curved form inscribed 'The Eureka Registered Jun 1877', with diamond registration mark, 8cm.
£30/50
- 510**
A pair of turned bone monocular Stanhopes, (The Lords Prayer/The Ten Commandments of God), each 1.8cm. (2)
£30/50
- 511**
Two 19th Century 'toys' probably for a doll, comprising a Norwegian pierced bone square dish with sloping sides pierced to the base 'Hilsen fra Nordkap', 5.5cm, and a white wood delicately pierced pail form vessel with domed velvet base, 6.5cm, in original circular cardboard box. (2)
(From a connoisseur's collection)
£30/50
- 512**
A miniature French book, classical style printed boards – 'Le Petit La Fontaine, Paris, chez Marcilly, Rue St. Jacques, No. 10', 94pp with engravings, spine lacking, 5.3 x 4cm.
(From a connoisseur's collection)
£30/50
- 513**
A mixed lot, comprising a 19th Century 6 ins. folding rule, a Victorian silver pull push pencil, 12cm, a 19th Century ivory paper knife the horn handle inlaid to one side with mother of pearl and abalone flowers and pique work, 19cm, two turned rosewood seal boxes each with wax seal, 3.7cm, a gold mounted watch key, and a rectangular rosewood sliding lid box, 7cm. (7)
(From a connoisseur's collection)
£50/100
- 514**
Miniature items toys or for dolls, comprising a pair of glass chamber sticks, 4.5cm, an initialled glass bead, pair of leather gloves, 6.5cm, a parasol with glass handle as a needlebook, 8cm, a misers purse, 11.5cm, a walnut containing two negro babies, 3.5cm, a silk egg with peg doll, 3cm, miniature bottle with printed label for 'Reese and Wichmann, Hamburgh', 3.5cm, and two turned wooden boxes containing miniatures. (qty)
(From a connoisseur's collection)
£50/100
- 515**
Miniature items probably for dolls, comprising a three chain chatelaine with scissors, key and brush, 7.5cm, miniature steel scissors in glass top circular box, the box 3.5cm, two pairs of scissors, 4cm and 3cm, and a gilt key, 2cm. (5)
(From a connoisseur's collection)
£50/100
- 516**
Miniature items probably for dolls, comprising three leather shoes, 6, 5.5 and 3cm., two wire mesh bags, 5.5 and 6cm., two miniature bonnets, two smallest doll eggs one only with doll, another miniature doll, four ceramic miniatures, three booklets, miniature apron, bonnet and pair of socks, spinning top, a glass top box, and a trunk style box containing three miniature soft toys. (qty)
(From a connoisseur's collection)
£50/100

517

A mixed lot, comprising a six piece ebony dressing table set, tray 31cm, an Anglo Indian ebony and decorated ink stand, 28cm, a silver cake knife, Birmingham 1851, 24cm with shaped leather box, a silver caddy spoon, Birmingham 1825 by Joseph Willmore, and a silver pickle fork. (10)
£50/100

518

A collection of seventeen eggs in various materials, mostly wooden and of box form, three containing thimbles and including a Mauchline example, another in Fern ware, scrap ware examples contained in a rectangular Anglo Indian quill work basket some decoration lacking, 22.5 x 17.5 x 8.5cm. (18)
(From a connoisseur's collection)
£50/100

519

A coconut basket and five other pieces, the carved coconut basket with geometric decoration, 12cm, a coquilla nut circular box containing dominos, 4.5cm, a similar egg, 7cm, a similar thimble case with thimble, 3.5cm, a vegetable ivory egg containing twin reels and needle case, 5cm, and a bug bear, 8cm. (6)
(From a connoisseur's collection)
£40/80

520

An attractive late 19th Century French crystal and gilt seal, the oval section handle overlaid in gilt with a scantily clad female tambourine player within gilt pierced borders, the circular seal initialled, 10cm.
£80/120

521

An early 20th Century French silver chain mesh bag, the decorated silver mount with acorn clasp, on chain suspension, 17 x 22cm max. excluding chain.
£50/100

522

Two 19th Century French mother of pearl seals, comprising a Palais Royal style example with leaf carved handle and silver seal mount 'MA', 6.2cm, and another with elaborate silver seal mount, 9.5cm. (2)
£80/120

523

Two seals, comprising a 19th Century example with part reeded mother of pearl handle and fancy silver seal mount, 10.5cm, and a cold painted bronze example a female bust study, 6.7cm. (2)
£50/100

524

Two 19th Century tortoiseshell rectangular card cases, both with hinged covers, one with mother of pearl edging, 10.2 x 8cm. (2)
£40/80

525

A 19th Century ivory box and an oval tortoiseshell box, the first of circular form and of two compartments, the lid inset with a gold pansy motif, the base section with a gilt frame mirror, 5.7cm dia., the other, 4.8cm. (2)
£40/60

526

An enamel mounted white metal rectangular box, the lid centred by an oval plaque of two cherubs holding a basket of flowers above their heads, within a cut strapwork framework over a panel of tortoiseshell, engraved corners, 7.5 x 4.5cm.
£50/100

527

Two 19th Century Chinese hair ornaments, one as a flower spray, the other a bird, each set with turquoise feathers on a pin mount, each approx. 8cm high. (2)
£40/60

528

A 19th Century ivory and shibayama fan or face screen handle, with a signed mother of pearl rectangular plaque, decorated with birds and insects, some lacking, on a blue silk rope suspension with head carved ojime, 19cm excluding silk suspension.
£40/80

529

A black ostrich feather fan, the simulated sticks and guards with a white metal leaf scroll cartouche, 39cm.
£30/50

530

A pair of late 19th Century French enamel decorated opera glasses, the cylinder bodies enamelled with gallant and lass in a garden and river landscape, mother of pearl eye rims and focus ring, signed to the gilt brass frame 'Carpentier Paris', in original silk lined red leather case with hook clasps, case 12cm.
£80/120

531

An attractive scent bottle, the baluster shaped glass body below a fancy silver gilt hinged cover with floret frieze and flowerhead top, complete with internal stopper, 10.5cm.
£60/100

532

A fine ivory and shibayama decorated silver purse, one side in gold lacquer with flowering branches the flowerheads and a butterfly in mother of pearl and other materials, the other side in plain ivory with a pierced metal monogram 'ELB' engraved internally to the silver hinge mount 'Eivir Linda Bidwell – Barton Road, Cambridge', assayed with lion and leopard head without date letter but with the makers mark for Drew and Sons (Samuel Summers Drew and Ernest Drew), leather and cloth four division interior, the silver mounts to the divisions hallmarked for Birmingham, 1897 with conforming makers mark, 8 x 5.7cm.
£100/200

533

A mixed lot, of 19th Century bone and ivory pieces including an oval brooch 'Adam', 5cm, an Indian ivory lotus carved pedestal vase, 7cm, and other pieces, some incomplete. (qty)
£40/80

534

An educational hand coloured chart 'Charta Regum Britanniae or a Genealogical Map of British Sovereigns By Reuben Cox – Late of Brunswick House Academy, Lewisham Road, Kent', 'Published ... May 17th 1811, T. Bensley Printer, Bols Court, Fleet Street, London', 72 x 58cm.
£100/200

535

A pair of enamel decorated opera glass grips, 19th Century, French, each with two oval panels of flowers on a blue ground with gilt star and scroll decoration one s.d., 5.2cm high. (2)
£50/100

536

A brass novelty vesta case, in the form of the face of William Ewart Gladstone, 4.7cm.
£40/80

537

A brass novelty vesta case, in the form of a cockerel's head, glass eyes, hinged beak, 5cm.
£40/80

538

A brass novelty vesta case, in the form of Mr Punch, 5.2cm.
£40/80

539

A brass novelty vesta case, in the form of Mr Punch seated in a chair, 6cm.
£40/80

540

A brass novelty vesta case, in the form of an eagles head with glass eyes, 6.5cm.

£40/80

541

A brass novelty vesta case, in the form of a crabs claw, a jewel in its pincers, 5.5cm.

£40/80

542

A brass novelty vesta case, in the form of an owl, catch defective and lacking eyes, 6cm.

£30/50

543

A brass novelty vesta case, in the form of an owl, glass eyes, 5cm.

£40/80

544

Two novelty vesta cases, comprising a white metal example as a lady's shoe, 8.5cm, and a brass example as a workman's boot with studded sole, 5.5cm. (2)

£50/100

545

Two novelty brass vesta cases, comprising an example in the form of a shoe incorporating a cigar cutter, 7cm, and another as a lady's leg with fancy shoe, 5.5cm. (2)

£50/100

546

A rare tin ware nutmeg grater, 17/18th Century in the form of roped military drum, each hinged domed end inscribed 'God Save The King' around a crown, 4 x 3.5cm dia.

£200/300

547

An attractive late 19th Century/early 20th Century Japanese ivory okimono, in the form of a bowl carved to the centre interior with a bat's head, the exterior of the bowl with branches of leaves and flowers in shibayama and supported by three male figures, two of young appearance and wearing bibs and holding chop sticks, the elder figure ushering them away, signature to base, 11.5cm max dia., 5cm high.

£200/400

548

A 19th Century plate, tray or salver stand in the manner of Gillow, ebonised, weighted rectangular moulded plinth base below two bolster form turned mounts divided by a central support, 45cm high, 29cm wide.

£50/100

549

A 19th Century silver mounted capronised ebony elephant, Sri Lanka, the standing elephant with elaborate silver scroll decorated mounts and harness below an umbrella, some droppers to cloth and harness lacking, the plinth cut to represent the outline of Sri Lanka, 23cm high, plinth 25cm.

£100/200

550

A collection of smoking paraphernalia, comprising a silver cigarette lighter with makers mark of Alred Dunhill, and hallmarked for London 1939, 6.5cm, a silver plated Dunhill lighter, 5.5cm, another gold plated marked Dunhill/Cartier, 6.5cm, a silver cigar cutter, marks worn, 15.5cm, two other cigar cutters one stamped 'Sterling', a Dunhill pipe reamer, a boxed Dunhill dice shaker, three leather cigar cases and a folding Thuya wood cigarette case incorporating vesta, 12 x 9cm closed. (12)

£100/200

551

A Royal Crown Derby coffee set for six settings in fitted case, the cylinder cups decorated in the Delft style with sailing boats, the cups with floral and scroll pierced silver mounts, London, 1905 by Army and Navy Co-operative Society Ltd., the lid with a set of six silver coffee spoons, three saucers with rim chips, box 35 x 28 x 11cm.

£50/100

552

Scales and rules, comprising a large slide rule in mahogany rectangular box, paper label for 'D. Thornton Ltd., Paragon Works, Manchester', no vernier, a Faber-Castell slide rule in original green card box, 30cm, another vernier cracked, 27.5cm, a chart/scale for Compressive Strengths In Concrete 'The Twelvetreets Calculator – Patent No. 17334 AD 1908', one mahogany side trim lacking, 15.6cm sq., a 'Hydrographic Office Rule Star Finder, March 1942' in worn leatherette circular case, 24cm dia., and a pilots knee or arm chart/note board dated 1944, 25.5cm. (6)

£50/100

553

Silver backed brushes, mirrors, etc., comprising two brushes and a hand mirror with embossed cherub decoration, mirror 23cm, a brush with birds, masks and scrolls, a pair of brushes, three other brushes, a mirror, a comb, and a boxed four piece dressing set, box 34 x 26cm. (13)

£50/100

554

Military and yachting badges and buttons etc., comprising cap badge of the Royal Welsh Fusiliers, a pair of collar badges, three buttons, four white metal menu stands, an EPNS vesta stand engraved for 'Ceylon Mounted Rifles/Ceylon Planters Rifle Corps' lacking blade for cigar cutter, a bronze medal for those who volunteered from Ceylon 1914-1919, a Royal Engineers sweet heart brooch, an RAF cap badge, four cloth yacht club badges and a selection of related buttons. (qty)

£50/100

555

A collection of one hundred and one vintage glass marbles, in plum velvet bag. (102)

£40/60

556

A late 18th Century red leather French document case, the silver plated lock complete with key, with internal divisions for the months of the year, some lacking titles, 29.5 x 15cm closed.

£40/60

557

A pair of carved mahogany feet, in the medieval style perhaps to simulate an armour, 24cm. (2)

£30/50

558

A Georgian silver mug, of tapering cylinder form with typical scroll handle, later engraved inscription and floral decoration in the Chinese style, London, 1796, 9cm high.

£40/60

559

A large silver spirit flask, of curved form initialled and dated 'HJF From FHJ 1921-1942', hinged swivel cover, Birmingham, 1942 by F. Burton Crosbee, 15.2cm.

£80/120

560

A pair of silver lidded mustard pots, of oval serpentine outline, pierced and engraved in the Adam style, blue glass liners damaged, Sheffield, 1927, by Goldsmiths and Silversmiths Company, 10cm wide. (2)

£60/100

561

A 19th Century brass and champlevé enamel two piece belt buckle, with hinge and pin fixing, 18cm.

£30/50

- 562**
A mixed lot of silver pieces, comprising a Dutch caddy spoon with twin figural handle, 7.2cm, a Colonial silver napkin ring, a Georgian lion mask leg salt, a nail buffer in crocodile skin case, a silver vesta, a pair of Georgian silver spectacles one slider arm lacking, and a silver frame for a perpetual calendar, 9 x 7cm. (7)
£80/120
- 563**
A silver military presentation shield, on oak plaque 'Aldershot Command Athletic Association – Command Tournament – Winners 1933-34 – 2nd Bn Queens Royal Regt', London 1933 by H. Phillips, oak shield, 32cm high.
£30/50
- 564**
A six piece silver condiment set with six spoons contained in a fitted mahogany box, comprising four twin handle trophy form open salts, a pair of lidded mustard pots, and a pair of pepper pots, London 1911 by Sibray, Hall and Co. Ltd., the mahogany box 32 x 22 x 13cm.
£80/120
- 565**
An Anglo Indian ivory and horn chess set, Vizagapatam, mid 19th Century, part only comprising eight ivory pawns, bishop, queen and knight and eight horn pawns, two castles, one knight, two bishops, king and queen, with two ivory bases only. (28)
£50/100
- 566**
A collection of ten lead flat soldiers of cavalry, contained in original cardboard box with printed label for Ernst Heinrichsen, all in bright fresh condition.
£30/40
- 567**
A late 18th Century/early 19th Century French twin prong fork with pierced and carved boxwood handle, with a figure by a wall in front of scrolling branches below a stepped and carved circular finial, 19cm.
£30/50
- 568**
A mixed lot, comprising three powder compacts two with cases, largest 9cm, a vintage Conway Stewart fountain pen with 14ct knib, a propelling pencil, a quizzing glass, a steel chatelaine, a misers purse, a leather case for a cane handle and sundry costume jewellery. (qty)
£40/80
- 569**
Two powder flasks, comprising a leather example embossed to one side with huntsman on horseback, by 'G. and J.W. Hawksley, Sheffield', 23cm and a decorated copper example, a/f, 23cm. (2)
£30/50
- 570**
Two small powder or shot flasks, comprising a 19th Century ivory example with silver plated mounts, hinged cover engraved with a crest and 'Vincit Amor Patriae', 13cm, and another with leather and inlaid body, lacking screw cover, 12.5cm. (2)
£40/80
- 571**
Book – Domestic Medicine By William Buchan, 9th Edn. London, 1786, old leather with replacement paper spine, contents loose in parts.
£20/30
- 572**
A very comprehensive Technical Drafting Drawing Set circa 1920, by E.O. Richter and Co., the interior velvet lid stamped in gold 'Praecision, E.O. Richter and Co.', approx. 63 pieces and apparently complete in a rectangular mahogany box with lock, case 48 x 33 x 5.5cm.
£200/400
- 573**
A 19th Century ivory and shibayama visiting card case, of rectangular form, each side with flowers and leaves in gold lacquer with insects, flowers, and other details in mother of pearl, coral and other materials, 8.5 x 4.7cm.
£150/250
- 574**
A late 19th Century ivory rectangular box, the lid with carved monogram, two division interior, 12 x 6 x 2cm, and a magnifying glass on leaf and floral carved ivory handle, 11.2cm. (2)
£40/60
- 575**
Three early 19th Century miniature bone games presumably for a doll comprising a bilboquet or cup and ball, 4.5 cm, totem with alphabetical faces, 3 cm and a spinning top (3)
£40/60
- 576**
A mixed lot including a mother of pearl diamond pattern card case, a damaged meerschaum pipe as a lady's head with fancy hat, a boxwood syringe case, sundry thimbles and other pieces (qty)
£30/50
- 577**
A miniature cased model of a Colt revolver in blued steel and brass with ivory grips, the model numbered and stamped several times 'AK Company No.33', in a fitted mahogany case with gilt brass powder flask and blued steel bullet mould, the case lined in red leather with two mahogany lids, case 11.5 x 5.5 cm
£200/300
- 578**
A miniature silver model of a Lee-Metford rifle and sling, together with a gold watch key in the form of revolver, the first hall marked for London, 1899, 9 cm and 5cm (2)
£100/150
- 579**
A miniature 17th Century toy brass or bronze cannon barrel, 6 cm,
£40/60
- 580**
Two late 19th/early 20th Century key ring pistols one in the form of a revolver with mother of pearl grips, 4 cm, the other as a rim fire pistol with engraved silver grips, 4.5 cm (2)
£100/200
- 581**
A Brazilian miniature metal model of paper knife in the form of a mameluke sabre, polished steel and gilt scabbard, etched blade, ivory hilt, in a fitted presentation case the sabre, 15.5 cm
£80/120
- 582**
A fine late 19th/early 20th Century Japanese gilded and engraved vesta case, one side decorated with a dragon the other with houses in a mountainous landscape, 5.5 x 3.5 cm
£200/300
- 583**
A colonial lot comprising a fly whisk with metal bound spiral horn handle, 22cm excluding whisk, a leather swagger stick with badge PP below a crown, 54 cm and a pair of ethnic bangles (4)
£50/100
- 584**
Nicholas 11 A Russian enamel beaker dated 1896, the so-called 'Cup of Sorrows' for the Coronation of the Tsar, 1896, 10.5 cm high
£100/200

585

A rare flintlock pistol by Nicholas Paris, Warwick, signed 'N. Paris, Warwick', 13 cm screw off cannon barrel, engraved steel lock plate, cock and trigger guard, the walnut stock mounted with silver scrolls and engraved cartouche with the upper section of a rearing stag a leaf branch in its mouth, the silver but cap engraved with a bird and terminating in a lion's head, 30.5 cm.
± Nicholas Paris set up his business in Jury Street, Warwick in 1669 and was buried in Warwick on 5th October 1716. His most important patron was Thomas Leigh, 2nd Baron of Stoneleigh. As well as being a gunmaker, Paris also worked as a blacksmith, watch maker, gilder and enameller, and carried out various other works within the town of Warwick. For further information on the Paris family, the most inventive and adaptable English provincial gunmakers of the late 17th and early 18th centuries, see Neal and Black, op cit., pp.265-70, 273-5 and J.F, Hayward, The Art of The Gunmaker, vol 11, pp.83-84
£2000/3000

586

A Georgian ivory toothpick box of navette form, the lid inset with a painted panel of dogs chasing a hare in gilt frame under glass, velvet and paper lined interior, small chip and crack to underside, 8.4cm.
£60/100

587 – 589

No Lots

Shell Mania – Shells in Sewing and Art

590

A shell decorated Victorian cardboard sewing box 'A Present From the Crystal Palace', of rectangular form the sides with patriotic colour prints, the lid with a green velvet gilt inscribed pin cushion and an arrangement of shells, the interior with a further pin cushion and a few accessories, 18 x 11 x 7.5cm.
(From a connoisseur's collection)
£50/100

591

Three Victorian shell and lithograph decorated pin cushions and a needle book, comprising an oval example inscribed 'Thine for ever', 10cm, a heart shaped example with a sea front view, 10cm, an octagonal example 'From A Friend', 7.5cm, and a rectangular needle book 'Faith', 9.5cm. (4)
(From a connoisseur's collection)
£50/100

592

Four Victorian shell decorated pin cushions, and a needle book comprising an octagonal example with print of a boy sailor 'Remember Me', loss to border, 8cm, a diamond shaped example with central floral print, 10cm, a heart shaped example 'A Present From Ramsgate', with harbour and rail station view, 10cm, a circular wall mounting example, 8cm dia., and a rectangular needle book, 10.5cm. (5)
(From a connoisseur's collection)
£50/100

593

A Victorian shell work pin cushion and a needle book both 'A Present From The Crystal Palace', the pin cushion of circular form with titled print of Crystal Palace, 8cm dia., the rectangular needle book inset to one side with a gilt velvet panel 'A Present From The Crystal Palace', and a titled colour print 'Second Terrace Crystal Palace', 10cm. (2)
(From a connoisseur's collection)
£40/80

594

A Victorian shell work large format pin cushion and a bag, the pin cushion of oval form, 13cm, the bag of rectangular box form below a green silk drawstring bag, 10.5cm. (2)
(From a connoisseur's collection)
£40/60

595

A printed trade sheet circa 1840 'A Lewis Dealer In Foreign Shells, Antiques, Fossils, Minerals ... No 3, Old Well Walk (Cheltenham), Sold Cheap For Ready Money', 19 x 13cm.
(From a connoisseur's collection)
£20/30

596

A shell work picture box, containing an anchor decorated with shells amid seaweeds and a part rope border, in a modern gilt bordered box frame, 26 x 31cm.
(From a connoisseur's collection)
£10/20

597

A Victorian shell work writing box and a hand mirror, the writing box of rectangular form the black leather ground decorated with shells, the interior in gold star printed paper with a two division tray with a compartment for knibs, flanked by a further double compartment with lid and an inkwell, lid warped, 25 x 19 x 6.5cm, the hand mirror with hanging loop, 28cm. (2)
(From a connoisseur's collection)
£40/80

598

Four 19th Century shell form purses and boxes, comprising three egg shaped mother of pearl examples with gilt metal hinged mounts, largest 9.5cm, and a further shell example on chain, 5.5cm. (4)
(From a connoisseur's collection)
£50/100

599

A mid 19th Century natural shell sewing companion and a similar purse, the companion of mother of pearl egg form with gilt hinge mount and raised on three ball feet, the interior in red velvet with steel scissors and replacement thimble, 8cm, the purse with white metal clasp, three division red paper interior, 10cm. (2)
(From a connoisseur's collection)
£50/100

600

A Victorian shell decorated sewing box, of rectangular form the sides and top extensively decorated with shells carefully arranged in complex mirror images and raised on shell feet, the interior lined in blue paper, some loss and damage, 26 x 21 x 14cm.
(From a connoisseur's collection)
£80/120

601

Two 19th Century glass cylinder form display jars, each on a folded foot and containing sea shells, 18.5cm high, 8cm dia., and a large shell containing other shells, 28cm. (2)
(From a connoisseur's collection)
£40/80

602

Three 19th Century framed seaweed displays, comprising a shadow framed basket of seaweed, the backing paper printed 'Sea-Weed Basket' over a verse, contained in Oxford frame one piece of frame lacking, 37 x 42cm, and two paper mounted and ink titled seaweed displays each in a gilt frame, largest 25 x 20cm. (3)
(From a connoisseur's collection)
£50/100

603

A pair of shell work miniature shoes and a slipper form pin cushion, some losses to the pair, 9cm and 16cm. (3)
(From a connoisseur's collection)
£30/50

604

Four shell work pieces, comprising a heart shaped pin cushion with inset colour print titled 'A Present', 11cm, a notebook with pencil closure containing a booklet with printed wraps 'Calendrier de 185', 10.5 x 7 cm, a wooden blotter of curved form one shell inscribed 'Wells On Sea', 8.5cm, and an egg shaped pin cushion, 6cm. (4)
(From a connoisseur's collection)

£40/80

605

Two shell form purses and an egg, comprising a spiral example, brass hinged rim, 6.5cm, another of oval form fancy brass clasp and three compartment paper interior, 11cm, and an egg with thimble, 6cm. (3)
(From a connoisseur's collection)

£40/60

606

A 19th Century group of three figures and flowers under a glass dome, the figures embellished with fragments of shell comprising a male figure wearing a triform hat, a female figure with veil and a child, 37cm high including wooden plinth.
(From a connoisseur's collection)

£80/120

607

A Victorian twin handled oval canework basket containing an attractive display of sea shells, basket 51cm.
(From a connoisseur's collection)

£50/100

608

An early 19th Century rosewood table snuff box of turned circular form, the lid decorated with natural sea shells, 7cm dia.
£40/60

609 – 611

No Lots

Buttons

Buttons From the collection of the late Claire Gilchrist Part 2
612

Buttons – a fine set of five steel mounted Wedgewood blue jasper buttons, each with variant classical figural circular plaque within a reeded rim, steel backs, each 3.7cm. (5)
(From the collection of the late Claire Gilchrist)

£400/600

613

Buttons – a fine set of six late 18th Century English enamel buttons, probably Bilston, each with a variant architectural landscape view in coloured enamels, copper rims and backs, each 3.7cm dia. (6)
(From the collection of the late Claire Gilchrist)

£1,000/2,000

614

Buttons – five late 18th Century French revolutionary buttons comprising a painted example with cannon and inscribed 'je garde la nation – 1789', under glass with brass rim and metal back, 3.5cm, two enamel on copper examples '14 Juillet 1789', and 'je terrasse les aristocrates', 2.8cm, a gilt brass button with wooden back 'La Loi et Le Roi – District De Chartres', 2.5cm and another similar in copper gilt 'District De Paris', 2.7cm. (5)
(From the collection of the late Claire Gilchrist)

£200/300

615

Buttons – three pairs of late 19th Century or early 20th Century porcelain buttons all decorated with flowers, the largest pair inscribed to one on reverse 'Dresden' below a crown, 3.7cm, the other pairs 3.2 and 2.7cm. (6)
(From the collection of the late Claire Gilchrist)

£50/100

616

Buttons – eight 19th Century and later porcelain buttons including a Minton example, 2.5cm, a Satsuma example, 3cm, a Paisley pattern example 3.4cm, and five others the largest 4cm and lacking shank. (8)
(From the collection of the late Claire Gilchrist)

£50/100

617

Buttons – six late 18th Century porcelain bird decorated buttons comprising a set of four painted with birds on branches, one cracked, four hole backs, 2.7cm, and two smaller variant examples, 2.5cm. (6)
(From the collection of the late Claire Gilchrist)

£200/400

618

Buttons – seven 19th Century buttons comprising an unmarked engraved silver example inscribed 'What Is Tommy Running For', 3.5cm, a papier mache button painted with a peasant, crescent fastener, 2.7cm, a gilt frame button inset with floral micro mosaic, stitched back, 2.3cm, a gilt metal button with wooden back, 2.7cm, and three steel buttons. (7)
(From the collection of the late Claire Gilchrist)

£80/120

619

Buttons – eight 19th Century buttons comprising a porcelain example painted with a dandy and maiden, 3.4cm, another in floral stripes with brass back, 2.6cm, a Georgian silver button initialled 'RW', London 1796 by Abraham Taylor, 3.2cm, a large gilded frame button with a female sulphide style bust below faceted glass panel, 4.2cm, a mother of pearl button in tortoiseshell frame, 3cm, another pair, 2.5cm, and another with stitched back, 3.6cm. (8)
(From the collection of the late Claire Gilchrist)

£150/250

620

Buttons – four sets of 19th Century buttons comprising a set of six floral painted, 3cm, a set of five painted with sprays of flowers, silver rims and backs, 3.2cm, a set of six, 1.7cm, and a set of five, 1.5cm. (22)
(From the collection of the late Claire Gilchrist)

£80/120

621

Buttons – four 19th Century and later enamel decorated sets comprising a set of five in blue enamel, pierced and decorated with paste, 2.2cm, a set of four pierced flowerhead examples, 3.2cm, a set of ten in two sizes pierced and decorated in floral enamel, backs stamped 'EM-Paris', 3cm and 2cm, and a set of six, 1.7cm. (25)
(From the collection of the late Claire Gilchrist)

£80/120

622

Buttons – twenty eight 'golden age' or 'colonial' buttons steel, copper and other materials, largest 3.7cm. (28)
(From the collection of the late Claire Gilchrist)

£50/100

623

Buttons – Ruskin and others comprising three flowerhead examples with Ruskin style centres marked to the metal backs 'The Guild Button – N and ES – Registered No. 388979', 3.5cm, two cards of three and seven Ruskin style buttons, and six others. (19)
(From the collection of the late Claire Gilchrist)

£50/100

- 624**
Buttons – fourteen 19th Century and later enamel buttons comprising a pair in floral enamel with dished holed centres, 3.2cm, a pair decorated with butterflies, 3.2cm, two paste set enamels and eight other enamel buttons two chipped, one lacking shank. (14)
 (From the collection of the late Claire Gilchrist)
£60/100
- 625**
Buttons – sixteen 20th Century ceramic buttons comprising a set of six shaped and painted as fish, 2.3cm, three head form examples, 2.5cm, two Barum buttons, three Crown Staffordshire examples and two others. (16)
 (From the collection of the late Claire Gilchrist)
£50/100
- 626**
Buttons – a mixed lot mostly 19th Century comprising a set of five amber coloured pear shaped buttons, 3cm, a set of six domed form amber buttons, 3cm, a smaller set of eight, twenty one agate buttons, largest 3.5cm, a pair of Chinese carved ivory buttons, 2.5cm and fifteen bone and ivory buttons. (57)
 (From the collection of the late Claire Gilchrist)
£50/100
- 627**
Buttons – a mixed lot of glass buttons 19th Century and later comprising a set of eight large flower form examples, one cracked, 6cm, a Paisley pattern pair, 3cm, two glass paperweight buttons and seventeen other glass buttons. (29)
 (From the collection of the late Claire Gilchrist)
£40/80
- 628**
Buttons – a mixed lot of mother of pearl buttons comprising a large flowerhead pair, 6cm, a set of three engraved and cut in metal frames, 3.5cm, another carved with a rose and twenty six various pearl buttons. (32)
 (From the collection of the late Claire Gilchrist)
£50/100
- 629**
Buttons – a mixed lot mainly tinnies, including some sets (qty)
 (From the collection of the late Claire Gilchrist)
£40/80
- 630**
Buttons – a mixed lot mostly silver and 19th Century including linked and paste set examples together with a selection of small 19th Century steel buttons, the largest 2.5cm. (qty)
 (From the collection of the late Claire Gilchrist)
£80/120
- 631**
Buttons – a mixed lot mostly 19th Century comprising a selection of portrait bust decorated buttons some in pairs and sets including two cornelian and a lava example, a set of five pierced and decorated buttons on horn backs, 3cm, and eleven other buttons. (qty)
 (From the collection of the late Claire Gilchrist)
£50/100
- 632**
Buttons – three small sets comprising a set of twelve probably Bois Durci each with a metal horse, dog or animal head, backs marked 'Ingram's patent', 1.2cm, a set of four engraved gilt with coral rings, 1.2cm, and a set of three serpent form jewelled examples with stud backs, 1.5cm. (19)
 (From the collection of the late Claire Gilchrist)
£40/80
- 633**
Buttons – a fine framed display of twenty buttons 18th Century and later including eight 19th Century enamels, three with jewelled borders, an 18th Century English landscape enamel, 2.6cm, an early 19th Century Italian micro mosaic butterfly button, 3.5cm, an early 19th Century painted button depicting an Indian dignitary in turban, 2.7cm, a blue, gold and silver enamel oval button, 4.5cm, the others in various metals and mainly pictorial, largest 4cm, in a glazed gilt frame, 30 x 38cm.
 (From the collection of the late Claire Gilchrist)
£600/1,000
- 634**
Buttons – a framed display of ten mid and late 19th Century brass mounted buttons mostly with glass centres, largest 2.8cm dia., in a glazed gilt frame 28 x 25.5cm.
 (From the collection of the late Claire Gilchrist)
£50/100
- 635**
Buttons – two oval framed displays comprising a set of ten oval enamel buttons, maroon ground with floral and leaf decoration 2.2cm, the other frame with seven black glass bust portrait examples 3cm, and six metal examples 1cm, each in glazed gilt frame 18cm. (2)
 (From the collection of the late Claire Gilchrist)
£80/120
- 636**
Buttons – a card display of twenty seven mostly silver examples including a set of five with heart motifs, 1.7cm, five niello examples, two Dutch octagonals, 2.2cm, and others, card 17 x 25cm.
 (From the collection of the late Claire Gilchrist)
£80/120
- 637**
Buttons – a framed display of nine 19th Century mother of pearl buttons including carved and pierced examples including one carved with a dragon in paste set surround, largest 5cm dia., in a glazed gilt rectangular frame, 28 x 25.5cm.
 (From the collection of the late Claire Gilchrist)
£50/100
- 638**
Buttons – a framed display of ten late 18th Century/early 19th Century 'colonial copper' or 'golden age buttons' mostly copper with various cut, stamped and engraved designs, largest 3.5cm, in a glazed gilt rectangular frame, 28 x 25.5cm.
 (From the collection of the late Claire Gilchrist)
£100/200
- 639**
Buttons – a framed display of two sets of early 19th Century enamel buttons, probably French, comprising seven in blue enamel with floral centres within jewelled borders, 3.5cm, and a smaller similar set of five, 1.5cm, in a glazed gilt rectangular frame.
 (From the collection of the late Claire Gilchrist)
£100/200
- 640**
Buttons – a framed display of a set of fourteen early 19th Century enamel buttons, probably French, each with blue enamel ground decoration in gilt and other enamels with flowers and other motifs within jewelled borders, 4 x 3cm, 10 x 1.5cm, in a glazed gilt rectangular frame, 28 x 25.5cm.
 (From the collection of the late Claire Gilchrist)
£100/200
- 641**
Buttons – a framed display of 23 buttons mostly 19th Century and comprising a set of six gilt metal and enamel floral buttons, 2.2cm, a set of four jewelled, 2.5cm, a set of six glass, and others, in a glazed gilt frame, 30 x 38cm.
 (From the collection of the late Claire Gilchrist)
£100/200

- 642**
Buttons – two card displays of buttons, the first of twenty seven metal buttons including five silver Arts and Crafts style examples and various others, card, 20 x 24.5cm, the other of thirteen including ten jewelled 19th Century examples (one converted to brooch), a reverse glass decorated example, 4cm and two Italian glass micro mosaic examples, card 18.5 x 25.5cm. (2)
 (From the collection of the late Claire Gilchrist)
£100/200
- 643**
Buttons – a card display of thirty two 19th Century and later buttons including twenty two enamels one set with paste, largest 3.2cm, a silver male mask example, 3.5cm, a floral marble example, 3cm, and a white metal seashell form example, 2cm, card 17.5 x 25.5cm.
 (From the collection of the late Claire Gilchrist)
£200/400
- 644**
Buttons – a card display of nineteen 19th Century buttons mostly depicting portrait busts within fancy borders, card 17.5 x 25.5cm.
 (From the collection of the late Claire Gilchrist)
£100/200
- 645**
Buttons – two card displays, the first of seventeen including six Bimini style glass examples, three silver, three paste and enamel pierced examples and others, largest 3.5cm, the other of seven large metal buttons portrait and figural one commemorating the 1953 Coronation, largest 6cm. (2)
 (From the collection of the late Claire Gilchrist)
£100/200
- 646**
Buttons – three card displays comprising a card of fifteen glass Bimini style examples, one lacking loop, largest 4.2cm, another of twenty five mostly glass decorative examples, largest 5.5cm, and another of nineteen including three glass lozenge examples, 4.5cm, Paisley patterns and others. (3)
 (From the collection of the late Claire Gilchrist)
£60/100
- 647**
Buttons – four card displays and loose examples of Art Deco celluloid and similar buttons comprising a card of twelve large examples, largest 6.5cm, a card of a set of six, 5.5cm, and others. (qty)
 (From the collection of the late Claire Gilchrist)
£50/100
- 648**
Buttons – six card displays comprising a card of thirty three gilt brass examples, largest 2.2cm, a card of eleven mainly royal portraits but including a Festival of Britain example, largest 3.5cm, a card of eight printed celluloid portrait examples, 1.2cm, and three other cards. (6)
 (From the collection of the late Claire Gilchrist)
£50/100
- 649**
Buttons – three card displays comprising a card of thirty three Art Deco celluloid examples, largest 3.7cm, and two cards each with a set of six. (3)
 (From the collection of the late Claire Gilchrist)
£40/60
- 650**
Buttons – a collection of shop cards displaying buttons including a wire coil hinged card of shoe buttons, 13 x 20cm x 2, and thirteen other examples. (14)
 (From the collection of the late Claire Gilchrist)
£40/80
- 651**
Buttons – a cased set of three large silver buttons each depicting a maiden's head amid foliage in the Art Nouveau style, London 1901, with import mark and makers mark for Charles Boyton, each 4cm dia., set in green velvet in a rectangular black leather case, the case, 16.5 x 6cm.
 (From the collection of the late Claire Gilchrist)
£50/100
- 652**
Buttons – a cased set of six silver buttons by Keswick School of Industrial Arts, in the Arts and Crafts style, each of domed form decorated with a flowerhead, each 2cm dia., set in ivory velvet, the silk lined lid interior inscribed in gilt 'Keswick School of Industrial Arts', the outer case in green cloth, the case 16 x 3.5cm.
 (From the collection of the late Claire Gilchrist)
£60/100
- 653**
Buttons – a cased set of six silver mounted 19th Century buttons each with domed blue enamel centre within a paste set border, one with two replacement stones, each 2.2cm dia., set in plum velvet, the outer case in red grained leather, the case 19.5 x 4cm.
 (From the collection of the late Claire Gilchrist)
£50/100
- 654**
Buttons – a cased set of six large late 19th Century enamel decorated buttons each with a central green panel overlaid in gilt flanked by floral panels, open copper backs, each 3.5cm dia., set in blue velvet in a black leather rectangular case, the case 23.5 x 5.5cm.
 (From the collection of the late Claire Gilchrist)
£100/200
- 655**
Buttons – a cased set of seven (of eight) Italian silver 17th/18th Century buttons each of cone form with flowerhead domed base, each on a loop and bar, the latter with various marks probably for Naples, 4cm, set in blue velvet with one vacant space, the silk lined lid marked for Carrington and Co., the outer case in tooled blue leather, the case 16 x 12.5cm.
 (From the collection of the late Claire Gilchrist)
£60/100
- 656**
Buttons – a cased set of six floral gilt buttons by Firmin, each 1.5cm dia., set in pale blue velvet, the interior of the lid marked 'Firmin and Sons, 13 Conduit St., London' in a red leather sarcophagus form case with gilt hook clasp, 11.2 x 3cm.
 (From the collection of the late Claire Gilchrist)
£40/60
- 657**
Buttons – a cased set of six floral pierced silver buttons, each 3cm dia., Birmingham 1901 by Reynolds and Westwood, the case modern, 22 x 4cm.
 (From the collection of the late Claire Gilchrist)
£50/100
- 658**
Buttons – a cased set of six green enamel silver buttons with leaf scroll and trellis design, each 2.2cm, Birmingham 1908 by Lawrence Emanuel, loose in a velvet and silk lined case the lid in gilt 'Lawson and Son ... Brighton', in a red leather tooled rectangular case, 12 x 3.5cm.
 (From the collection of the late Claire Gilchrist)
£50/100
- 659**
Buttons – two cased sets comprising five only blue floral painted domed small buttons with brass backs, each 1.2cm dia., in a leatherette covered case, 9.2cm, and a set of six Italian glass micro mosaic buttons of oval form in copper gilt mounts, 1.4cm, in a modern case, 7.5cm. (2)
 (From the collection of the late Claire Gilchrist)
£40/80

660

Buttons – a mixed lot together with thirty eight Victorian photographs showing costume and buttons. (qty)

(From the collection of the late Claire Gilchrist)

£40/60

661

Buttons – a three fold blue cardboard counter display, 'Crescent Button For Distinction' with displays of coloured plastic buttons and related buckles, each section 30 x 20cm.

(From the collection of the late Claire Gilchrist)

£20/30

662

Buttons – sporting and similar subjects, comprising a circular framed display of seven Bois Durci or similar relief decorated, three of horses, two of lurchers, a hare and an otter, 2.5cm, the frame 18.5cm, and a carded display of twenty three mostly brass examples including two late 18th Century of a horses head and a hare, a set of six Essex Crystal style examples of dogs heads, and an engraved mother of pearl of a stags head, largest, 2.7cm, card 29 x 21cm. (2)

(From the collection of the late Claire Gilchrist)

£50/100

663

Buttons – a rare set of twelve 18th Century buttons contained in their original black leather circular box, with wall mount hanging, each steel button with domed purple enamel circle within a copper frame with central steel stud, 3.6cm, slight chipping to edge of steel on four, the lid to the case secured by three of four brass swing hooks, the interior in red velvet and ivory silk, box 20.5cm dia.

(From the collection of the late Claire Gilchrist)

£200/400

664

Buttons – a framed display of a set of five 18th Century large buttons, each with a central sulphide type female bust portrait on a gilded ground under a faceted glass cover within an engraved gilded border, 4.2cm, set in a velvet mount in an ebonised frame with bevelled glass, frame 9 x 32cm.

(From the collection of the late Claire Gilchrist)

£150/250

665

Buttons – a carded display of three sets, comprising a set of eleven 18th Century engraved steel, 3.2cm, a set of six faceted cut steel, 2.5cm, and a set of ten blue glass ball form buttons, 1cm, card 29.5 x 22cm.

(From the collection of the late Claire Gilchrist)

£50/100

666

Buttons – nine small carded displays, including a card of four livery, a set of six mother of pearl inlaid with silver, 1.7cm, a set of six fan shaped Cashmere lacquer, 2.5cm and others. (qty)

(From the collection of the late Claire Gilchrist)

£20/40

667

Buttons – a set of five Georgian silver pierced and paste buttons, 2.5cm, and a similar shoe buckle, 4.5 x 3.5cm. (6)

(From a connoisseur's collection)

£40/80

668

Five porcelain circular plaques presumably for buttons, comprising a large example with female Nubian head, 3cm dia., and four smaller with male and female classical heads, 1.6cm. (5)

£40/60

669

Four 19th Century hare coursing buttons, each of circular dished dark mother of pearl, two mounted with metal plaques of hunting dogs and two of running hares, 1.6cm dia. (4)

£40/60

670

Buttons and a pair of buckles, comprising a set of five papier mache buttons inset with mother of pearl flowers and leaves, 2.7cm dia., a set of six gilt metal Art Nouveau floral pierced examples, 2.2cm dia., three early cut steel pierced examples, three glass swirl pressed examples, a set of ten domed and jewelled buttons, three Bimini winged cupid pattern examples two rectangular and one oval, latter 4.2cm and a pair of paste set oval shoe buckles, 5.5cm. (32)

£50/100

671

A cased set of six Art Nouveau style gilded metal circular buttons, each with waist length woman playing a harp, each stamped to reverse 'Liberty' within a crown and with a diamond form mark similar to a registration mark, set in silk in a worn black leatherette rectangular case, 11 x 6cm.

£40/60

The button collection of the late Mary Wheelhouse

672

Buttons – an award winning framed display of twenty five silver buttons, of various forms and origins including two Chinese examples one enamelled, two engraved Georgian silver examples one with hare, one with dog, a jewelled Austro-Hungarian example and others, some marked, largest 3.5cm, frame 34 x 24.5cm.

± Within the frame a prize ribbon '50 Years – National Button Society – First Prize – Moline Illinois – Sept. 26 – Oct. 1st 1988', and with a brass plaque 'Best in Classification – Hall Marked Silver – National Button Society 1988'.

((From the collection of the late Mary Wheelhouse))

£150/250

673

Buttons – a framed display of nine Japanese Satsuma buttons, floral and landscapes, largest 3cm, frame 32 x 27cm.

(From the collection of the late Mary Wheelhouse)

£50/100

674

Buttons – a fine framed display of twenty five, including two 18th Century floral enamels with cut steel borders, two similar but smaller with inset paste, four further 18th Century enamel examples, six late 19th Century portrait buttons including three paste set and one steel set, an Art Nouveau enamel and pearl example and others, largest 3.5cm, frame 32 x 24.5cm.

(From the collection of the late Mary Wheelhouse)

£250/350

675

Buttons – a framed display of twenty four, porcelain buttons mostly 19th Century but including two 18th Century floral painted examples, the largest example depicting a standing woman, chipped to edge, 3.2cm, frame 32.5 x 24.5cm.

(From the collection of the late Mary Wheelhouse)

£80/120

676

Buttons – a fine framed display of twenty four, including an 18th Century enamel example of cupid, three smaller enamel examples with cut steel borders, another of a couple embracing, a paste set champlévé enamel example, eleven silver examples some hallmarked, and others, largest 3.7cm, frame 32 x 24.5cm.

(From the collection of the late Mary Wheelhouse)

£200/400

677

Buttons – a framed display of twenty, mostly featuring portrait busts including a Japanese wooden example, six silver examples including one titled 'Diane', a champlévé enamel example, and others, largest 4cm, frame 32 x 24cm.

(From the collection of the late Mary Wheelhouse)

£100/200

- 678**
Buttons – a fine framed display of twenty five, Japanese Satsuma porcelain buttons, floral, landscape and insects, largest 4cm, frame 32 x 24cm.
 (From the collection of the late Mary Wheelhouse)
£200/400
- 679**
Buttons – a framed display of twenty five, including a domed enamel under glass with floral centre, three carved mother of pearl one with steel border, one with paste border, one stone missing, four paste set examples, a Bimini example depicting an owl and others, including five silver, largest 3.5cm, frame 32 x 24.5cm.
 (From the collection of the late Mary Wheelhouse)
£100/200
- 680**
Buttons – a framed display of twenty five, mostly cut steel, including an enamel and paste set example, 18th Century and later, largest 3.5cm, frame 32 x 24cm.
 (From the collection of the late Mary Wheelhouse)
£80/120
- 681**
Buttons – a framed display of twenty five, comprising sixteen silver examples including six of riders and horses, two of horses pulling carts, a large example of a huntsman in forest, eight small mostly enamel or paste set and others, largest 4cm, frame 31.5 x 24cm.
 (From the collection of the late Mary Wheelhouse)
£100/200
- 682**
Buttons – a framed display of twenty nine, glass Bimini buttons, various shapes, sizes and designs, largest 3.7cm, frame 31.5 x 24cm.
 (From the collection of the late Mary Wheelhouse)
£80/120
- 683**
Buttons – a framed display of twenty four, mostly brass relief, some blackened, all featuring figures or birds, late 19th Century, largest 3.7cm, frame 32 x 24.5cm.
 (From the collection of the late Mary Wheelhouse)
£50/100
- 684**
Buttons – a framed display of twenty five, themed around dogs, birds, elephants, fish, etc., some children's, various materials, 19th and 20th Century, largest 3.5cm, frame 32 x 24.5cm.
 (From the collection of the late Mary Wheelhouse)
£50/100
- 685**
Buttons – a fine framed display of twenty five mother of pearl buttons, 18th Century and later including an example carved with a turtle, others engraved and pierced, two square, largest 4cm, frame 32 x 24.5cm.
 (From the collection of the late Mary Wheelhouse)
£150/250
- 686**
Buttons – a fine framed display of thirty five enamel decorated buttons, including three 18th Century examples, largest 3cm, frame 32 x 24.5cm.
 (From the collection of the late Mary Wheelhouse)
£200/400
- 687**
Buttons – an attractive framed display of twenty five buttons, comprising a silver mask example, paste set, floral and figural enamels including a turtle and a fish, two silver, two Japanese 19th Century ivory examples and others, largest 3cm, frame 32 x 24.5cm.
 (From the collection of the late Mary Wheelhouse)
£150/250
- 688**
Buttons – a framed display of twenty five, all figural, mostly in relief including one of a tennis match, mostly brass, some blackened, largest 4.2cm, frame 32 x 24.5cm.
 (From the collection of the late Mary Wheelhouse)
£100/200
- 689**
Buttons – two small framed displays, one of seventeen examples featuring cats including four Essex crystal style examples, largest 4.2cm, frame 25 x 12cm, the other titled 'Bouton Miniature', all of dogs heads, cats or owls, largest 2.6cm, frame 19.5 x 14cm. (2)
 (From the collection of the late Mary Wheelhouse)
£50/100
- 690**
Buttons – two small framed displays, one of nineteen mostly paste set 19th Century but including three turquoise set examples, largest 2cm, frame 25 x 17cm, the other of twenty eight buttons, fourteen in enamel, fourteen paste set, largest 2cm, frame 19 x 18.5cm.
 (From the collection of the late Mary Wheelhouse)
£50/100
- 691**
Buttons – three small framed displays, comprising a frame of thirteen glass paperweight buttons, largest 1.4cm, frame 17 x 13cm, another of nineteen celluloid and Essex crystal style examples featuring dogs heads, dogs or foxes, largest 1.4cm, frame 21 x 14.5cm, and another of thirty glass buttons, 19th Century and later, largest 3.5cm, frame 19.5cm sq. (3)
 (From the collection of the late Mary Wheelhouse)
£80/120
- 692**
Buttons – three small framed displays, comprising a frame of nine all featuring horses including three 18th / 19th Century Dutch silver examples, largest 2.5cm, frame 22 x 17cm, another of fourteen all of female busts portraits including nine silver, largest 3cm, frame 24 x 16.5cm, and another of three 19th Century glass buttons, 0.6cm, frame 18.5 x 14.5cm. (3)
 (From the collection of the late Mary Wheelhouse)
£80/120
- 693**
Buttons – two carded displays, comprising a card of twenty themed on transport featuring cars, trains, boats and one of an air ship, including a hall marked silver example of a ship, largest 3.2cm, the other civilian uniform buttons, forty two, including banks, shops, masonic, golf, university, largest 2.5cm, cards 30.5 x 23cm. (2)
 (From the collection of the late Mary Wheelhouse)
£50/100
- 694**
Buttons – two carded displays, comprising a card of sixteen including two continental silver toggle examples, a silver mounted dogs head enamel, largest 3.2cm, the other sixteen including glass, porcelain and four enamels, largest 3.4cm, cards 30.5 x 23cm. (2)
 (From the collection of the late Mary Wheelhouse)
£50/100
- 695**
Buttons – two carded displays, comprising a card of thirty seven glass paperweight type and other buttons, largest 1.8cm, the other thirty five small glass and enamel buttons, largest 1.6cm, cards 30.5 x 22.5cm. (2)
 (From the collection of the late Mary Wheelhouse)
£50/100

696

Buttons – three carded displays, comprising a card of seventy tinnies, 19th Century, largest 1.2cm, another of thirty five jet and others, largest 1.6cm, and another of forty two 19th Century French jet, largest 1cm, cards 30.5 x 22.5cm. (3)
(From the collection of the late Mary Wheelhouse)

£50/100

697

Buttons – four carded displays, comprising a card of seventeen novelty buttons including a brass 'You Liar', largest 4.7cm, another of twenty two Art Deco, largest 3.2cm, another of seventeen themed on faces and masks, largest 4cm, cracked, and a card of twenty six mostly brass decorative examples, largest 3.2cm, cards 30.5 x 22.5cm. (4)

(From the collection of the late Mary Wheelhouse)

£80/120

698

Buttons – two carded displays, comprising a card of nineteen including seven enamels and an agate example, largest 3.2cm, and another card of seventeen including a set of six flowerhead enamels, four mother of pearl and a pierced silver figural example, largest 3.5cm, cards 30.5 x 22.5cm. (2)

(From the collection of the late Mary Wheelhouse)

£50/100

699

Buttons – three carded displays, comprising a card of twenty one themed on animals, largest 3cm, another of twenty six mostly children's buttons featuring animals, largest 5cm, and another card of eighteen, largest 2.5cm, cards 30.5 x 22.5cm. (3)

(From the collection of the late Mary Wheelhouse)

£50/100

700

Buttons – four carded displays, comprising a card of thirty celluloid or similar, largest 5cm, another but with only ten buttons, largest 3.4cm, another of twenty five all depicting insects or animals, largest 3.7cm, and a smaller card of twenty one, mainly fruit themed, largest 3.2cm, all but last card 30 x 22.5cm. (4)

(From the collection of the late Mary Wheelhouse)

£40/60

701

Buttons – three carded displays, of livery and similar buttons brass and plated, mostly 19th Century, eighty two examples in all, largest 3.2cm, cards 30 x 22.5cm. (3)

(From the collection of the late Mary Wheelhouse)

£100/200

702

Buttons – four carded displays, of mostly uniform and blazer buttons in metal including golf, fencing, banks, institutions, shipping, fifty five examples in all, largest 2.7cm, cards 30 x 22.5cm. (4)

(From the collection of the late Mary Wheelhouse)

£50/100

703

Buttons – four carded displays, comprising a card of nineteen featuring birds, largest 2.7cm, another of thirty five mostly of glass ball form, largest 2.7cm, another of twenty five including paste and others, largest 4cm, and another of twenty three themed on birds, largest 4.5cm, cards 30 x 22.5cm. (4)

(From the collection of the late Mary Wheelhouse)

£50/100

704

Buttons – three carded displays, comprising a card of twenty three mostly floral including two porcelain, largest 3cm, another of twenty three floral themed including a signed winter landscape and a glass micro mosaic, largest 6cm, and another of seven only, relief metal, largest 3.2cm, cards 30 x 22.5cm. (3)

(From the collection of the late Mary Wheelhouse)

£50/100

705

Buttons – two carded displays, comprising a card of thirty in various materials themed on figures including a silver example, largest 3.7cm, and another card of nineteen mostly glass, largest 3.2cm, cards 30 x 22.5cm. (2)

(From the collection of the late Mary Wheelhouse)

£30/50

706

Buttons – a mixed lot, comprising a framed display of thirty themed on sports including an example of a bi-plane, largest 4.5cm, a framed display of John Buck Beatrix Potter buttons on sale card, 1.5cm, a frame of twenty seven children's buttons, largest 5cm, a frame of twenty five including polished agates, an oval porcelain landscape, two pearl, five enamels and others, largest 3.5cm, a framed display of twenty three celluloid and others, largest 5cm, and a card display of sixty four. (6)

(From the collection of the late Mary Wheelhouse)

£40/80

707

Buttons – Reference Books, comprising – Livery Buttons – The Pitt Collection – Gwen Squire, 1976, d.w. Buttons – A Guide for Collectors – Gwen Squire, 1972 Railway Buttons, Badges and Uniforms – David J. Froggatt, 1986, stamped as a soiled copy, dw (3)

(From the collection of the late Mary Wheelhouse)

£20/40

708

Buttons – Reference Book, The Big Book of Buttons, Elizabeth Hughes and Marion Lester, signed, 1981, binding a little weak.

(From the collection of the late Mary Wheelhouse)

£50/100

709

Buttons – Reference Books, comprising – About Buttons – A Collectors Guide – Peggy Ann Osbourne, 1994, d.w. Buttons – The Collectors Guide, Nancy Frink and Maryalice Ditzler, 1993, d.w. Buttons – Diana Epstein and Millicent Saftro, signed, 1991, d.w. (3)

(From the collection of the late Mary Wheelhouse)

£40/60

710

Buttons – Reference Books, comprising – Boutons – Therese Gandovet, n.d. Buttons Heritage – Erwina Chumberlin and Minerva Miner, 1976 The Collector's Encyclopedia of Buttons – Sally C. Luscomb, 6th printing 1979, d.w. Buttons For The Collector – Primrose Peacock, 1972 Buttons, A Collector's Guide – Victor Houart, 1977 Buttons – Collectors Blue Books – Diana Epstein, 1968, d.w. Button Button – Pegg Ann Osborne, 1993 A Carnival of Glass Iridescent Luster Buttons – Ruth Miller Clark, 1986 Buttons – Woman's Field Guide – Jill Gorski, 2009 The Button Book – Diana Epstein, 1996 Buttons – Art in Miniature – Stefan O. Schiff, 1979 (11)

(From the collection of the late Mary Wheelhouse)

£40/80

710a

Buttons – a fine framed display of twenty five mainly silver buttons most of pierced design featuring flowers but including a large floral porcelain example, two enamel decorated and a beadwork example, largest 4.2cm, frame 32 x 24.5cm.

(From the collection of the late Mary Wheelhouse)

£150/250

The Property of A Lady

711

A set of eight late 19th Century Japanese ivory stud form buttons, decorated in gold and coloured lacquer, four depicting birds amid flowering branches and four depicting insects amid flowering branches, 2cm dia. (8)
£80/120

712

A set of six early 20th Century ivory buttons, each realistically carved and pierced as a standing elephant, 2.5cm. (6)
£40/60

713

A fine set of six late 19th Century Japanese shibayama and lacquer decorated ivory domed buttons, each finely decorated in gold and coloured lacquer with a bird or birds amid flowering branches, some with leaves, insects and flowers in mother of pearl, coral and stones, 2.7cm dia. (6)
£300/400

714

A fine set of six signed late 19th Century Japanese domed ivory buttons, each decorated with a fan or other shaped panels of gold and black lacquer depicting birds and foliage over script, one signed to reverse, 2.6cm dia. (6)
£100/200

715

A set of seven late 19th Century ivory buttons, with raised rims and carved in relief three depicting sitting or kneeling male figures and four of geishas, the details heightened in black lacquer, 2.4cm dia. (7)
£200/300

716

A fine set of six late 19th Century Japanese domed ivory buttons decorated in lacquer and shibayama, each with a flowering branch and insect with mother of pearl and coral highlights, 3cm dia. (6)
£300/500

717

A fine set of twelve late 19th Century Japanese domed ivory buttons decorated with Shakudo escutcheons, each depicting a flowering branch in black and gold with attendant insect, 2.6cm dia. (12)
£500/800

718

A fine set of six late 19th Century Japanese domed ivory buttons each decorated in Shibayama and lacquer with three insects, 2.7cm dia. (6)
£250/350

719

A set of five late 19th Century Japanese domed ivory buttons, each carved with a lion's head with details heightened in black and red, 3cm dia. (5)
£50/60

720

A set of four late 19th Century Japanese domed ivory buttons, each carved with a monkey's head with details heightened in red and black, 2cm dia. (4)
£40/60

721

Nine various bone and ivory buttons, four carved with dogs, three with stags, a bird, one with a hardstone scorpion, and one in shibayama of flowers, largest 2.2cm. (9)
£80/120

722

A fine and large Japanese domed ivory button, decorated in shibayama with a cockerel, 3cm dia.
£80/120

723

A fine and large late 19th Century carved ivory oriental button, pierced and carved with lilly type flowers and leaves the reverse also carved with elaborate leaves, 4.5cm dia.
£50/100

Our next sale
November 18th 2020
We will be together again

Absentee Bidding Form

Paddle number

This sale will be conducted in accordance with our Conditions of Sale and bidding and buying at the sale will be regulated by those conditions. You should read those conditions which set out the charges payable by you on the purchases you make and other terms relating to bidding and buying at the sale. Please ask any questions you have about the conditions before signing this form.

Please provide details of the lots on which you wish to place bids at least 24 hours prior to the sale. Bids will be rounded down to the nearest increment. New bidders must also provide proof of identity when submitting bids. Failure to do this may result in your bids not being processed. Bleasdales Limited will endeavour to execute these bids on your behalf but will not be liable for any errors.

If posting this form please contact us on 07983 304880 to ensure we have received it prior to the Sale date.

[illegible]

The Sewing Sale		Sale date: July 22nd 2020	
Sale no: T 2020		Sale venue: Online	
Title		Initials	
Last Name			
Company name (If applicable)			
Address			
City		County	
Postcode		Country	
Telephone daytime			
Telephone evening			
Telephone mobile			
Fax			
Email			
Are you acting as a private <input type="checkbox"/> or a trade <input type="checkbox"/> buyer?			

Privacy Policy: For details of our privacy policy, see: www.bleasdalesltd.co.uk/auctions/privacy-policy

BY SIGNING THIS FORM YOU AGREE THAT YOU ARE BOUND BY AND UNDERSTAND OUR CONDITIONS OF SALE. THIS AFFECTS YOUR LEGAL RIGHTS. ***All lots are subject to a buyers premium of 20% in addition to the hammer price.***

Your signature	Date July 2020
----------------	-----------------------

FOR OFFICE USE ONLY

Identification seen: Driving Licence ☐ Passport ☐ C/C ☐ Other _____ Date _____ Time _____ Taken by _____

PTO

Last name & Initials

Paddle number

--

[illegible]

Privacy Policy: For details of our privacy policy, see: www.bleasdalesltd.co.uk/auctions/privacy-policy

BY SIGNING THIS FORM YOU AGREE THAT YOU ARE BOUND BY AND UNDERSTAND OUR CONDITIONS OF SALE. THIS AFFECTS YOUR LEGAL RIGHTS. ***All lots are subject to a buyers premium of 20% in addition to the hammer price.***

Your signature

Date _____

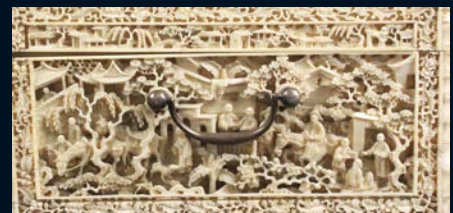
July 2020

FOR OFFICE USE ONLY

Identification seen: Driving Licence ☐ Passport ☐ C/C ☐ Other _____ Date _____ Time _____ Taken by _____



Lot 166
An exceptional Chinese export ivory sewing box, circa. 1820, of rectangular form each surface deeply carved with figures, pagodas, trees, horses and boats within leaf scroll borders and bamboo edge. See p. 11.





www.the-saleroom.com
 Direct Link: www.bit.ly/sewingsale
 10am Wednesday 22 July 2020

Bleasdales Ltd.
 The Stables, 15 Imogen Gardens, Warwick, England, CV34 6FB, England
 t: +44 (0) 7983 304880
rvb@bleasdalesltd.co.uk